

Description: MiMo LTE, GNSS Vehicle Mount Antenna

Series: Panther

PART NUMBER: GPSMB301



All dimensions are in mm / inches

Features:

- Supports LTE 698-960/1695-2170/2300-2700/2900-3600MHz(MIMO)
- Supports Beidou, GPS, Galileo, GLONASS
- Direct Mount and optional Magnetic Mount features
- See GPSMBMM for magnetic mount details

Applications:

- Energy (Utility Vehicles)
- First Responders (Police, Ambulance, Fire)
- Fleet Management
- Location based services
- Telematics

Issue: 1637

In the effort to improve our products, we reserve the right to make changes judged to be necessary.

CONFIDENTIAL AND PROPRIETARY INFORMATION

This document contains confidential and proprietary information of Pulse Electronics, Inc. (Pulse) and is protected by copyright, trade secret and other state and federal laws. Its receipt or possession does not convey any rights to reproduce, disclose its contents, or to manufacture, use or sell anything it may describe. Reproduction, disclosure or use without specific written authorization of Pulse is strictly forbidden.

For more information:

Pulse Worldwide Headquarters
12220 World Trade Drive
San Diego, CA 92128
USA
Tel:1-858-674-8100

Pulse/Larsen Antennas
3611 NE 112th Ave
Vancouver, WA 98682
USA
Tel: 1-360-944-7551

Europe Headquarters
Pulse GmbH & Do, KG
Zeppelinstrasse 15
Herrenberg, Germany
Tel: 49 7032 7806 0

Pulse (Suzhou) Wireless Products Co, Inc.
99 Huo Ju Road(#29 Bldg,4th Phase
Suzhou New District
Jiangsu Province, Suzhou 215009 PR China
Tel: 86 512 6807 9998



Description: MiMo LTE, GNSS Vehicle Mount Antenna

Series: Panther

PART NUMBER: GPSMB301

ELECTRICAL SPECIFICATIONS

Frequency (LTE)	698 – 960 / 1695 - 2170 / 2300 – 2700 / 2900 - 3600	MHz
Frequency (Beidou, GPS, Galileo, Glonass)	1561.098 ± 2.046/ 1575.42 ± 1.023/ 1602.5625 ± 4	MHz
Nominal Impedance	50	Ω
VSWR (LTE)	< 1.5	
Gain* (LTE antenna, < 2170 MHz)	6	dBi ± 1 dB
Gain* (LTE antenna, > 2170 MHz)	5.5	dBi ± 1 dB
Isolation LTE to LTE**	15 or better	dB
GNSS antenna RHCP gain	1	dBic ± 2dB
LNA gain	30	dB ± 2 dB
Noise Figure	2.5 (cascade)	dB
Current	8	mA ± 2 mA
V _{dc}	3-5	V _{dc}
LNA and filter attenuation		
	@ 824 MHz	70 dB
	@ 960 MHz	65 dB
	@ 1710 MHz	60 dB
	@ 2170 MHz	65 dB
Connector type	SMA	
Cable type(s)	RG-58 (LTE) / RG-174 (GPS)	
Length	17	Feet

*Measured on 2ft GND plane and with 4 inch cables

**In free space with 17ft cables

**Description: MiMo LTE, GNSS Vehicle Mount
Antenna****Series: Panther****PART NUMBER: GPSMB301****MECHANICAL SPECIFICATIONS**

Plastic radome	ABS/PC Material UV Stabilized, UL-94HB
Color	Black
Ingress Protection	IP67
Weight	~940 g
Mounting	Direct or Magnetic options

ENVIRONMENTAL SPECIFICATIONS

Operating temperature	-40-+85° C
Humidity	95%RH @ +25°C for 12h and 55°C for 12h
Vibration	MIL-STD 810G, section 514.6 , 5-500 Hz, 60min/axis
Thermal Shocks	MIL-STD 810G, section 503.5, -40 to +85°C, 3 cycles
Drop Test	Minimum of one drop per axis – 4, 1 meter drops

Issue: 1637

In the effort to improve our products, we reserve the right to make changes judged to be necessary.

CONFIDENTIAL AND PROPRIETARY INFORMATION

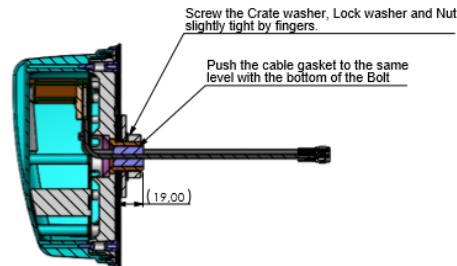
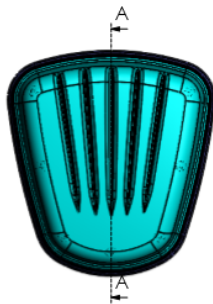
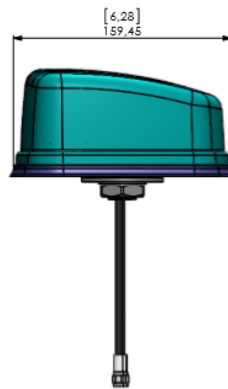
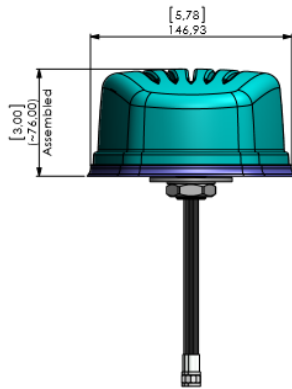
This document contains confidential and proprietary information of Pulse Electronics, Inc. (Pulse) and is protected by copyright, trade secret and other state and federal laws. Its receipt or possession does not convey any rights to reproduce, disclose its contents, or to manufacture, use or sell anything it may describe. Reproduction, disclosure or use without specific written authorization of Pulse is strictly forbidden.

Description: MiMo LTE, GNSS Vehicle Mount Antenna

Series: Panther

PART NUMBER: GPSMB301

MECHANICAL DRAWING



Tolerances of linear dimensions (MEDIUM ISO 2768-m)	
Dimension	Tolerance
0,5 - 3	±0,1
3 - 6	±0,1
6 - 30	±0,2
30 - 120	±0,3
120 - 400	±0,5
400 - 1000	±0,8
1000 - 2000	±1,2
2000 - 4000	±2

Tolerances of angular dimensions (MEDIUM ISO 2768-m)	
Dimension of chamfer side (millimeter)	Tolerance
up to 10	±1°
10 - 30	±0°30'
30 - 120	±0°20'
120 - 400	±0°15'
over 400	±0°12'

Tolerances of radii and chamfers (MEDIUM ISO 2768-m)	
Radius, chamfer height	Tolerance
0,5 - 3	±0,2
3 - 6	±0,5
over 6	±1

For more details see ISO 2768-m
Tolerances apply to the
www.pulse.com

No riveting craters allowed to use.

Functional Characteristics by:
Process capability studies required, total 0 pcs.
Process capability studies required and ongoing statistical process control required, total 0 pcs.

Please follow Pulse limits of hazardous substances (RoHS, hexavalent) in the document Pulse Hazardous Substances (HS) Limits and Vendor Supply Qualification Material Composition (QCM-34-A-20202)

MSD	Application
P01	Cable Tie around GPS updated.
A	A-Release.

Pulse Electronics
Pulse Finland Oy
Pulse & P&E Composite, Finland
Tel: +358 207 735 600
Fax: +358 207 735 301
www.pulseelectronics.com/antennas

Product: GPSMB301
Item Name: Antenna Assembly

Sheet number	2/2
General tolerance	
Customer number	
Date	12.03.2015
Drawn	
Check	
Appr	
Scale	1:2 (A2)
Document number	GPSMB301
Part Version	
Document Version	A
Issue	A
Date	18.09.2015
Name	Jarko

Issue: 1637

In the effort to improve our products, we reserve the right to make changes judged to be necessary.

CONFIDENTIAL AND PROPRIETARY INFORMATION

This document contains confidential and proprietary information of Pulse Electronics, Inc. (Pulse) and is protected by copyright, trade secret and other state and federal laws. Its receipt or possession does not convey any rights to reproduce, disclose its contents, or to manufacture, use or sell anything it may describe. Reproduction, disclosure or use without specific written authorization of Pulse is strictly forbidden.



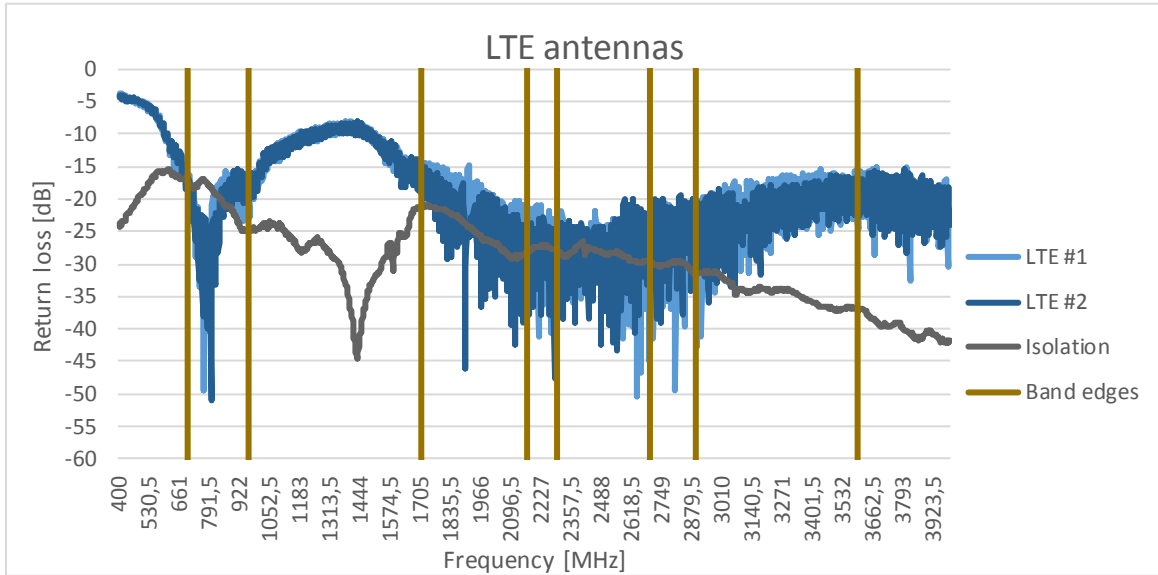
Description: MiMo LTE, GNSS Vehicle Mount Antenna

Series: Panther

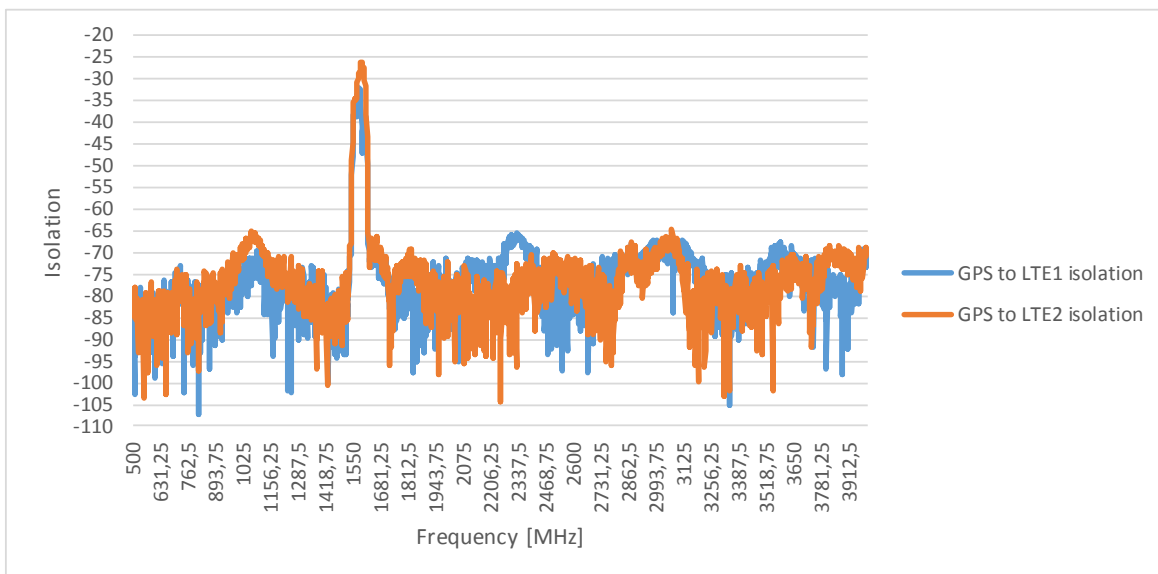
PART NUMBER: GPSMB301

CHARTS

Return loss and isolation in free space, LTE antennas**



GNSS isolation to LTE 1 and LTE 2 antenna*



Issue: 1637

In the effort to improve our products, we reserve the right to make changes judged to be necessary.

CONFIDENTIAL AND PROPRIETARY INFORMATION

This document contains confidential and proprietary information of Pulse Electronics, Inc. (Pulse) and is protected by copyright, trade secret and other state and federal laws. Its receipt or possession does not convey any rights to reproduce, disclose its contents, or to manufacture, use or sell anything it may describe. Reproduction, disclosure or use without specific written authorization of Pulse is strictly forbidden.

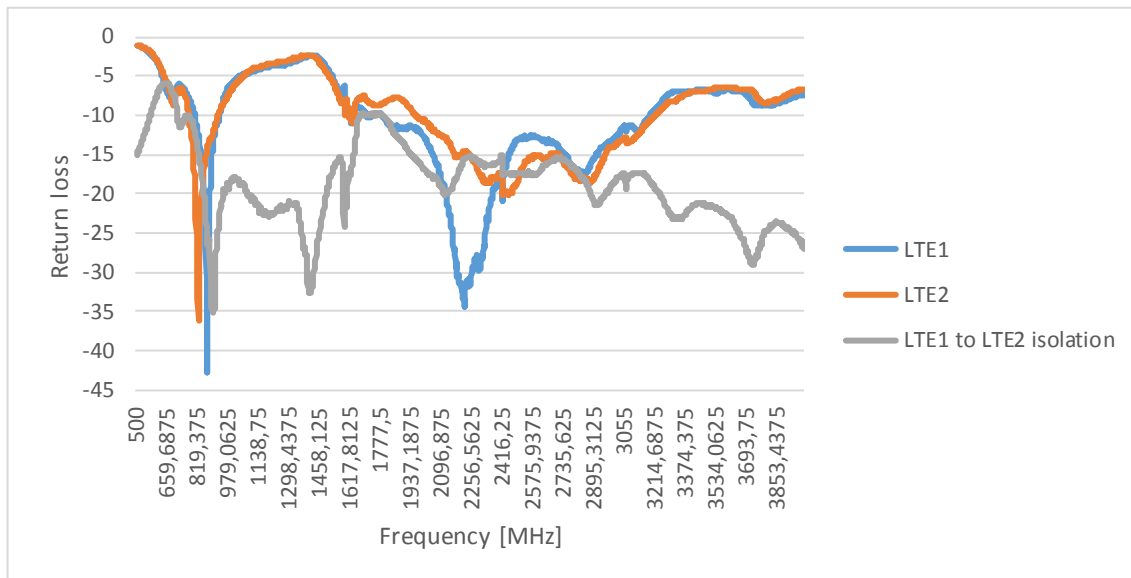
Description: MiMo LTE, GNSS Vehicle Mount Antenna

Series: Panther

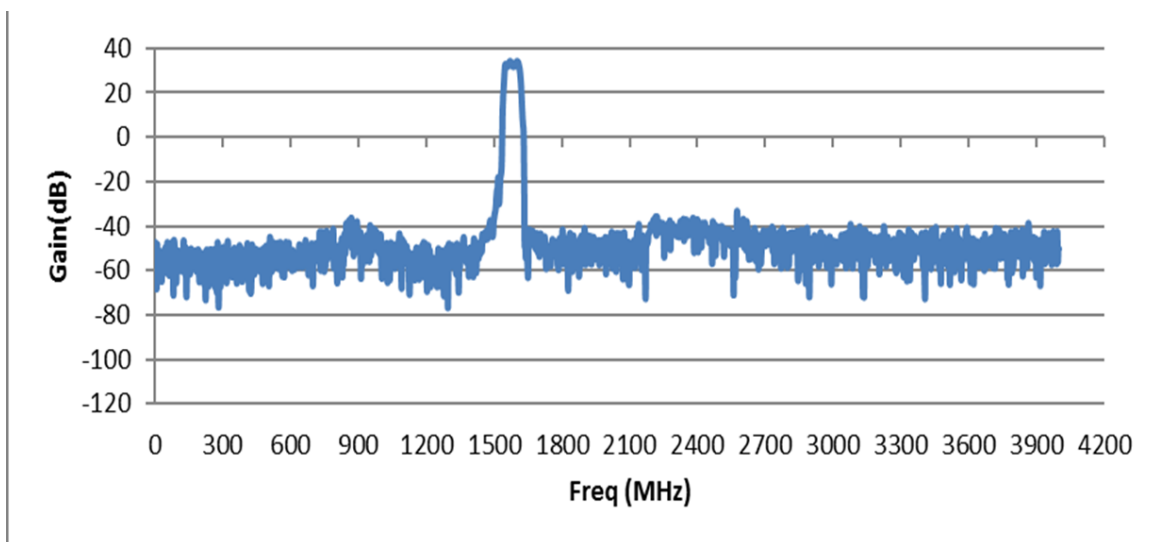
PART NUMBER: GPSMB301

CHARTS

Return loss and isolation, LTE antennas*



GNSS LNA performance



Issue: 1637

In the effort to improve our products, we reserve the right to make changes judged to be necessary.

CONFIDENTIAL AND PROPRIETARY INFORMATION

This document contains confidential and proprietary information of Pulse Electronics, Inc. (Pulse) and is protected by copyright, trade secret and other state and federal laws. Its receipt or possession does not convey any rights to reproduce, disclose its contents, or to manufacture, use or sell anything it may describe. Reproduction, disclosure or use without specific written authorization of Pulse is strictly forbidden.

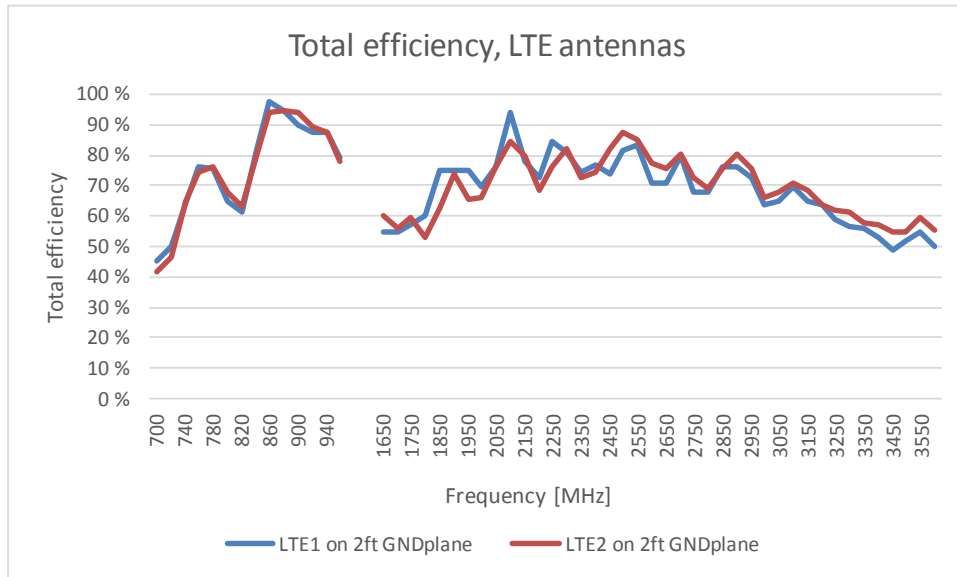
Description: MiMo LTE, GNSS Vehicle Mount Antenna

Series: Panther

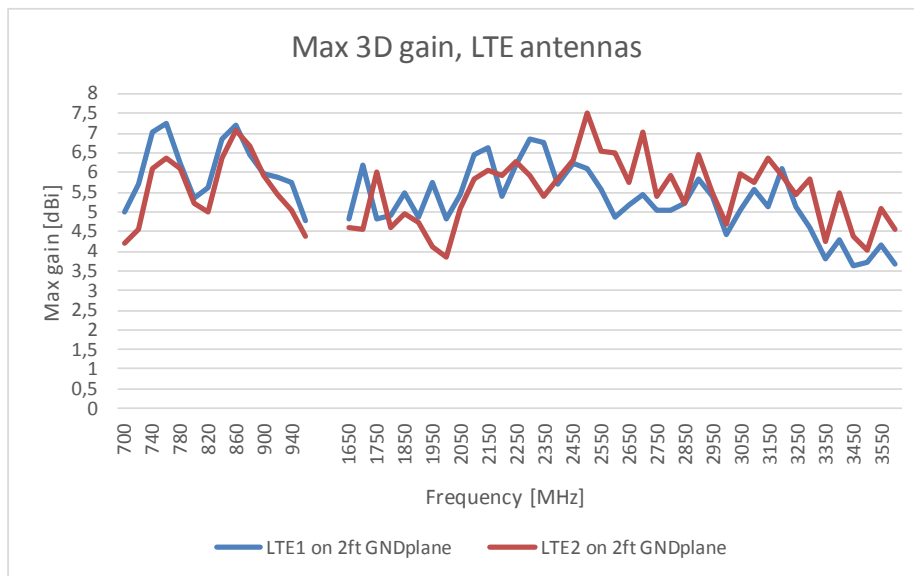
PART NUMBER: GPSMB301

CHARTS

LTE antenna total efficiency with 2ft metal plate and 4 inch cables



Maximum 3D gain, LTE antenna with 2ft metal plate and 4inch cables



Issue: 1637

In the effort to improve our products, we reserve the right to make changes judged to be necessary.

CONFIDENTIAL AND PROPRIETARY INFORMATION

This document contains confidential and proprietary information of Pulse Electronics, Inc. (Pulse) and is protected by copyright, trade secret and other state and federal laws. Its receipt or possession does not convey any rights to reproduce, disclose its contents, or to manufacture, use or sell anything it may describe. Reproduction, disclosure or use without specific written authorization of Pulse is strictly forbidden.

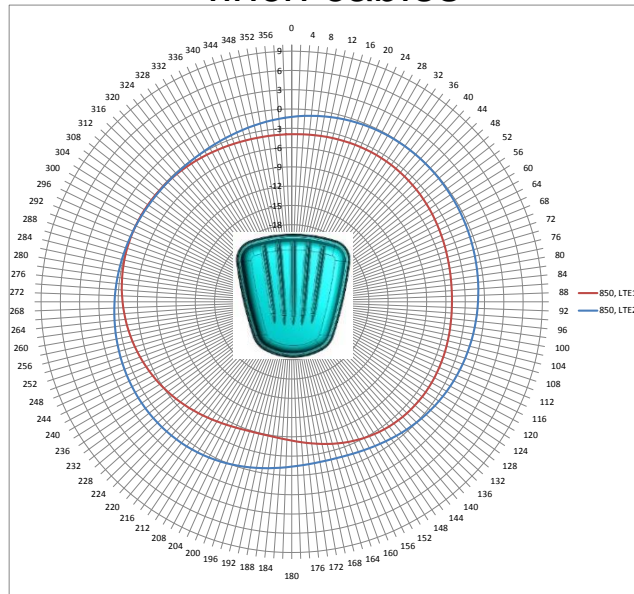
**Description: MiMo LTE, GNSS Vehicle Mount
Antenna**

Series: Panther

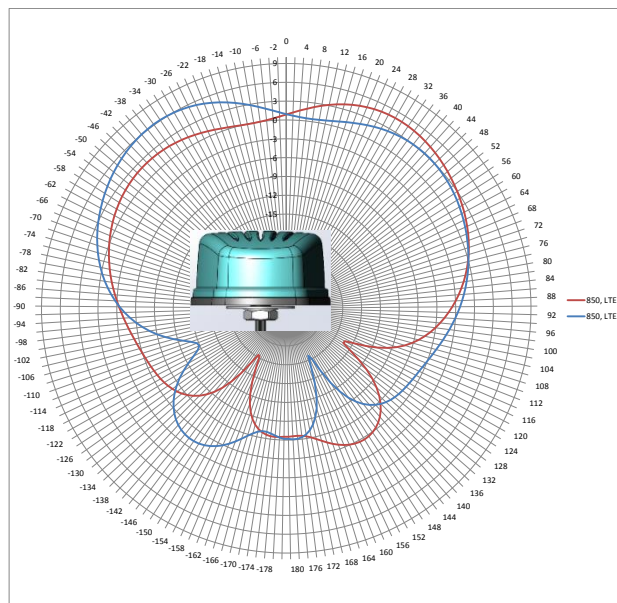
PART NUMBER: GPSMB301

CHARTS

LTE antenna radiation pattern at 850MHz with 2ft metal plate and 4inch cables



Horizontal plot



Vertical plot front view

Issue: 1637

In the effort to improve our products, we reserve the right to make changes judged to be necessary.

CONFIDENTIAL AND PROPRIETARY INFORMATION

This document contains confidential and proprietary information of Pulse Electronics, Inc. (Pulse) and is protected by copyright, trade secret and other state and federal laws. Its receipt or possession does not convey any rights to reproduce, disclose its contents, or to manufacture, use or sell anything it may describe. Reproduction, disclosure or use without specific written authorization of Pulse is strictly forbidden.

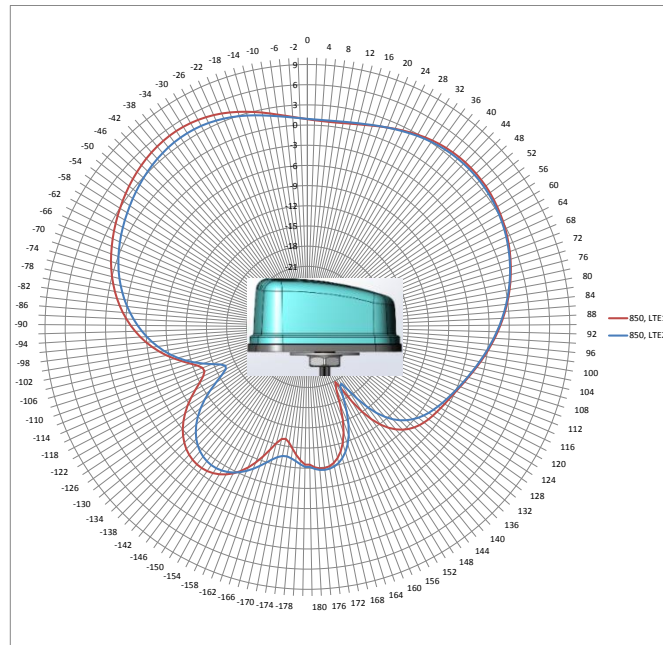
**Description: MiMo LTE, GNSS Vehicle Mount
Antenna**

Series: Panther

PART NUMBER: GPSMB301

CHARTS

LTE antenna radiation pattern at 850MHz with 2ft metal plate and 4inch cables



Vertical plot side view

Issue: 1637

In the effort to improve our products, we reserve the right to make changes judged to be necessary.

CONFIDENTIAL AND PROPRIETARY INFORMATION

This document contains confidential and proprietary information of Pulse Electronics, Inc. (Pulse) and is protected by copyright, trade secret and other state and federal laws. Its receipt or possession does not convey any rights to reproduce, disclose its contents, or to manufacture, use or sell anything it may describe. Reproduction, disclosure or use without specific written authorization of Pulse is strictly forbidden.

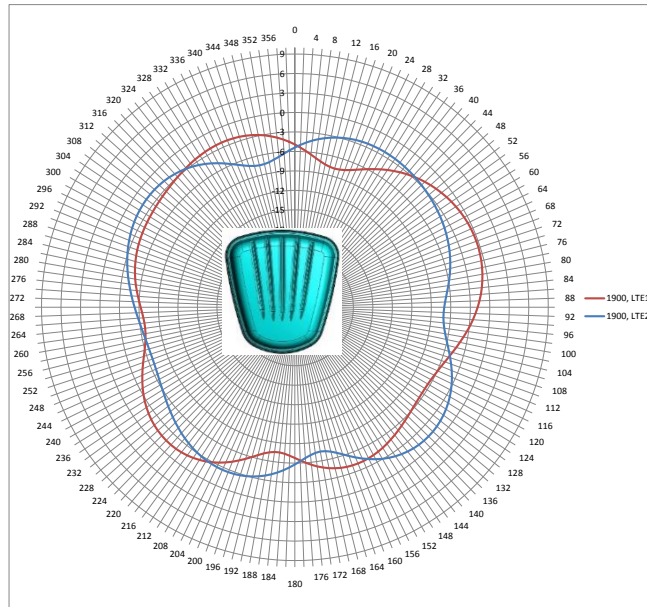
**Description: MiMo LTE, GNSS Vehicle Mount
Antenna**

Series: Panther

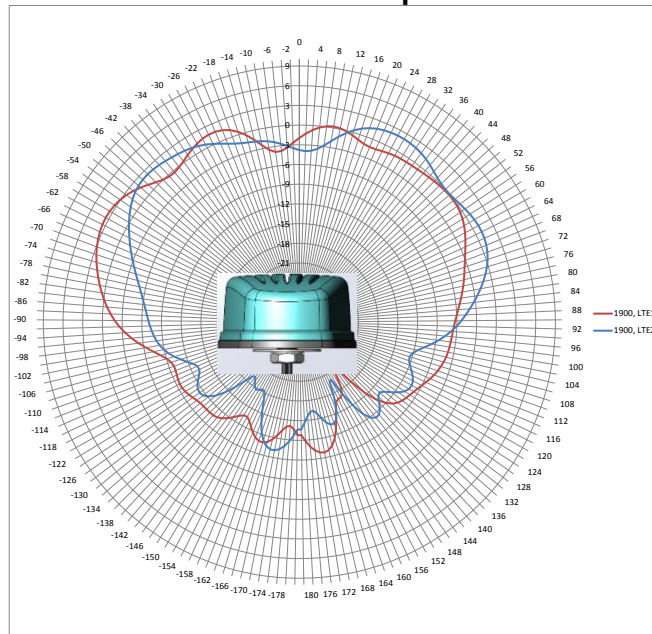
PART NUMBER: GPSMB301

CHARTS

LTE antenna radiation pattern at 1900MHz with 2ft metal plate and 4inch cables



Horizontal plot



Vertical plot front view

Issue: 1637

In the effort to improve our products, we reserve the right to make changes judged to be necessary.

CONFIDENTIAL AND PROPRIETARY INFORMATION

This document contains confidential and proprietary information of Pulse Electronics, Inc. (Pulse) and is protected by copyright, trade secret and other state and federal laws. Its receipt or possession does not convey any rights to reproduce, disclose its contents, or to manufacture, use or sell anything it may describe. Reproduction, disclosure or use without specific written authorization of Pulse is strictly forbidden.

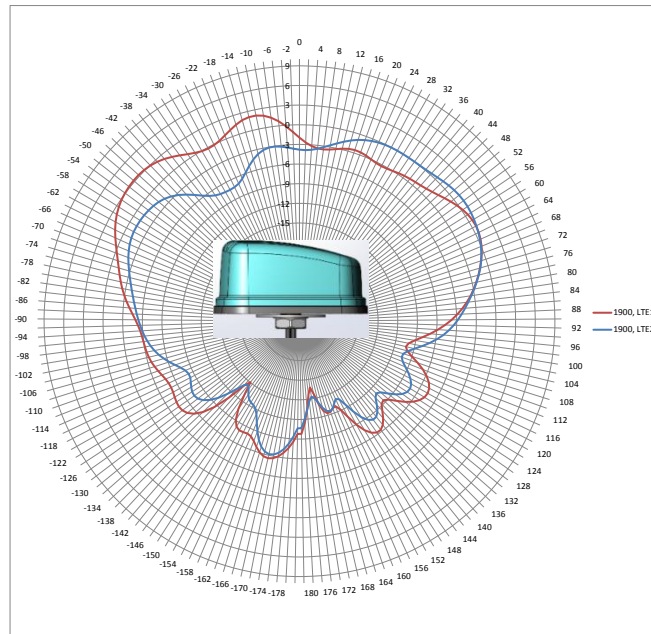
Description: MiMo LTE, GNSS Vehicle Mount Antenna

Series: Panther

PART NUMBER: GPSMB301

CHARTS

LTE antenna radiation pattern at 1900MHz with 2ft metal plate and 4inch cables



Vertical plot side view

Issue: 1637

In the effort to improve our products, we reserve the right to make changes judged to be necessary.

CONFIDENTIAL AND PROPRIETARY INFORMATION

This document contains confidential and proprietary information of Pulse Electronics, Inc. (Pulse) and is protected by copyright, trade secret and other state and federal laws. Its receipt or possession does not convey any rights to reproduce, disclose its contents, or to manufacture, use or sell anything it may describe. Reproduction, disclosure or use without specific written authorization of Pulse is strictly forbidden.

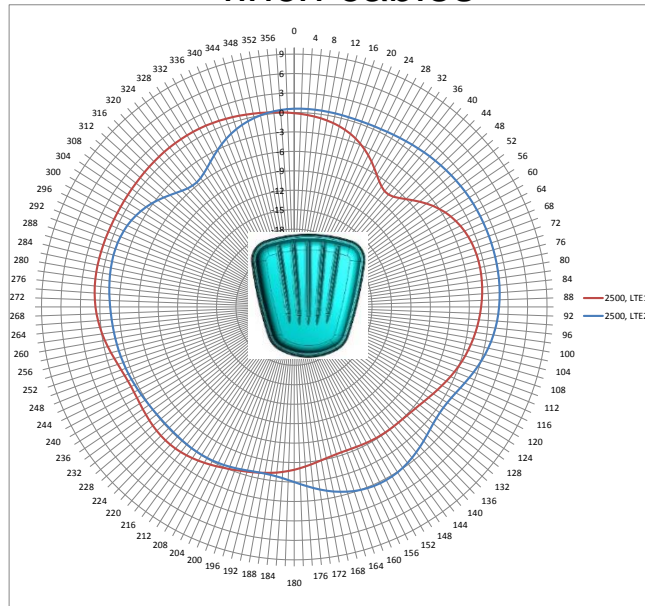
Description: MiMo LTE, GNSS Vehicle Mount Antenna

Series: Panther

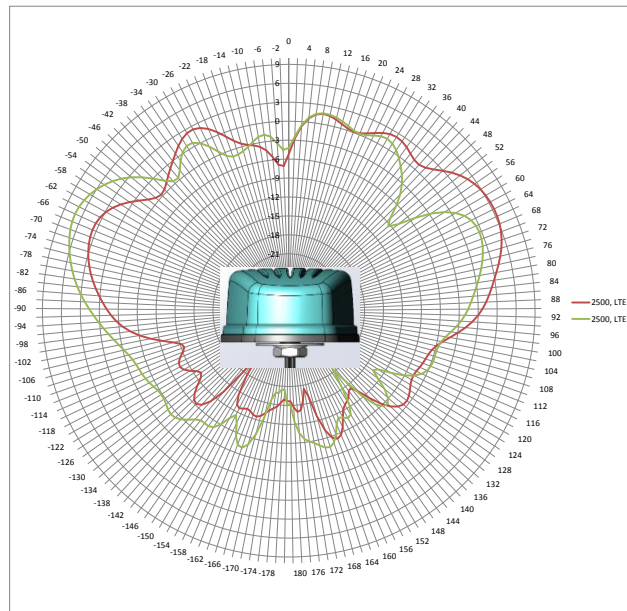
PART NUMBER: GPSMB301

CHARTS

LTE antenna radiation pattern at 2500MHz with 2ft metal plate and 4inch cables



Horizontal plot



Vertical plot front view

Issue: 1637

In the effort to improve our products, we reserve the right to make changes judged to be necessary.

CONFIDENTIAL AND PROPRIETARY INFORMATION

This document contains confidential and proprietary information of Pulse Electronics, Inc. (Pulse) and is protected by copyright, trade secret and other state and federal laws. Its receipt or possession does not convey any rights to reproduce, disclose its contents, or to manufacture, use or sell anything it may describe. Reproduction, disclosure or use without specific written authorization of Pulse is strictly forbidden.

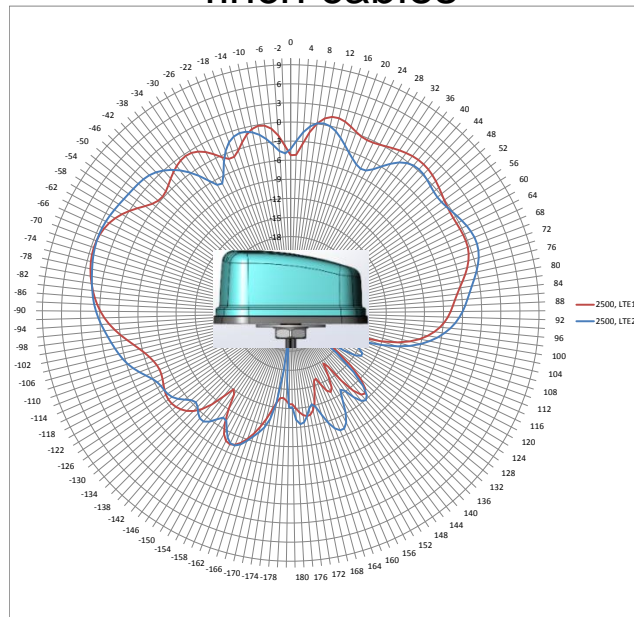
**Description: MiMo LTE, GNSS Vehicle Mount
Antenna**

Series: Panther

PART NUMBER: GPSMB301

CHARTS

LTE antenna radiation pattern at 2500MHz with 2ft metal plate and 4inch cables



Vertical plot side view

Issue: 1637

In the effort to improve our products, we reserve the right to make changes judged to be necessary.

CONFIDENTIAL AND PROPRIETARY INFORMATION

This document contains confidential and proprietary information of Pulse Electronics, Inc. (Pulse) and is protected by copyright, trade secret and other state and federal laws. Its receipt or possession does not convey any rights to reproduce, disclose its contents, or to manufacture, use or sell anything it may describe. Reproduction, disclosure or use without specific written authorization of Pulse is strictly forbidden.

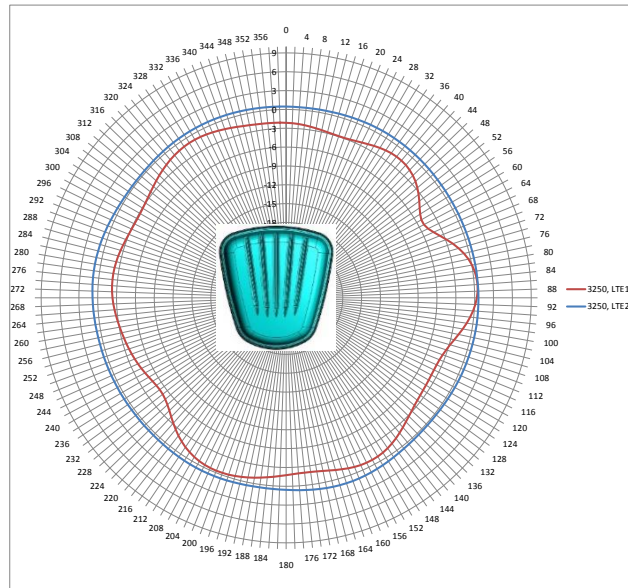
Description: MiMo LTE, GNSS Vehicle Mount Antenna

Series: Panther

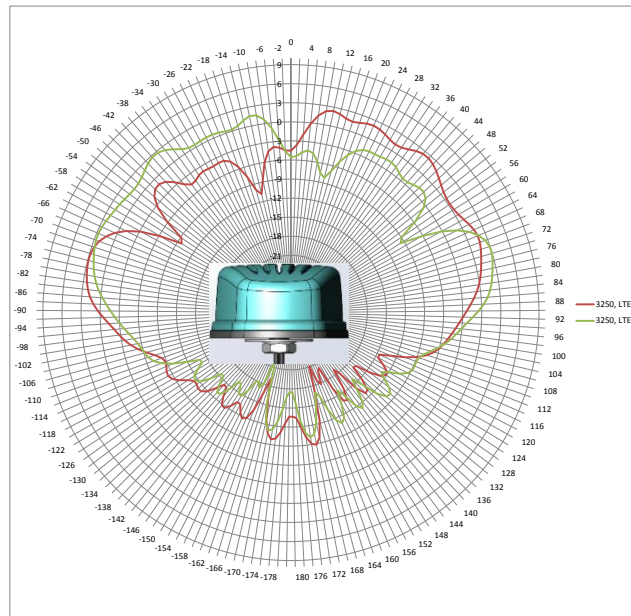
PART NUMBER: GPSMB301

CHARTS

LTE antenna radiation pattern at 3250MHz with 2ft metal plate and 4inch cables



Horizontal plot



Vertical plot front view

Issue: 1637

In the effort to improve our products, we reserve the right to make changes judged to be necessary.

CONFIDENTIAL AND PROPRIETARY INFORMATION

This document contains confidential and proprietary information of Pulse Electronics, Inc. (Pulse) and is protected by copyright, trade secret and other state and federal laws. Its receipt or possession does not convey any rights to reproduce, disclose its contents, or to manufacture, use or sell anything it may describe. Reproduction, disclosure or use without specific written authorization of Pulse is strictly forbidden.

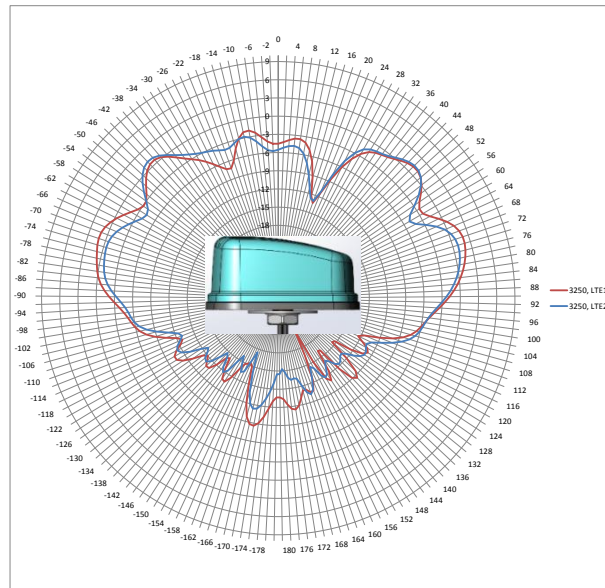
**Description: MiMo LTE, GNSS Vehicle Mount
Antenna**

Series: Panther

PART NUMBER: GPSMB301

CHARTS

LTE antenna radiation pattern at 3250MHz with 2ft metal plate and 4inch cables



Vertical plot side view

Issue: 1637

In the effort to improve our products, we reserve the right to make changes judged to be necessary.

CONFIDENTIAL AND PROPRIETARY INFORMATION

This document contains confidential and proprietary information of Pulse Electronics, Inc. (Pulse) and is protected by copyright, trade secret and other state and federal laws. Its receipt or possession does not convey any rights to reproduce, disclose its contents, or to manufacture, use or sell anything it may describe. Reproduction, disclosure or use without specific written authorization of Pulse is strictly forbidden.

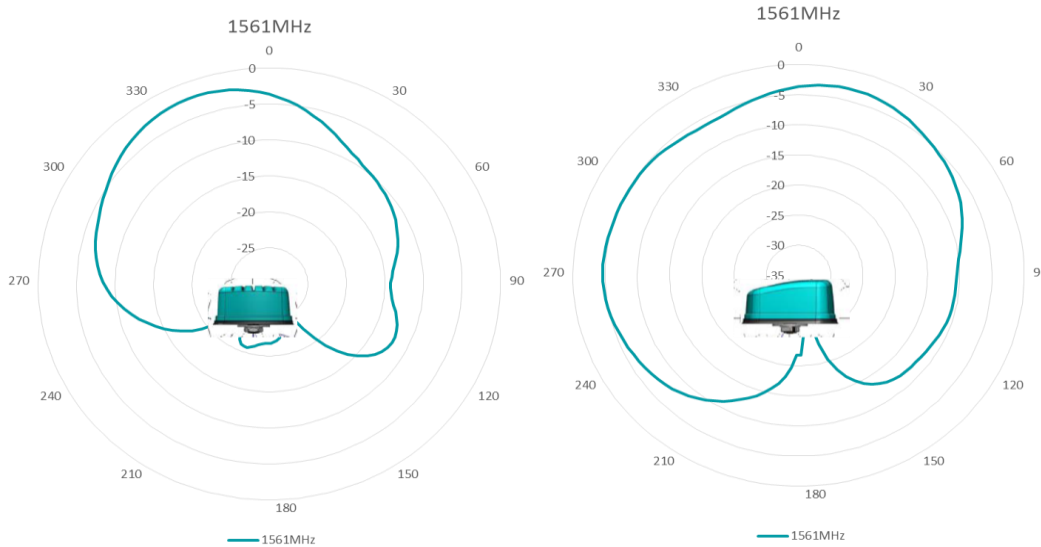
Description: MiMo LTE, GNSS Vehicle Mount Antenna

Series: Panther

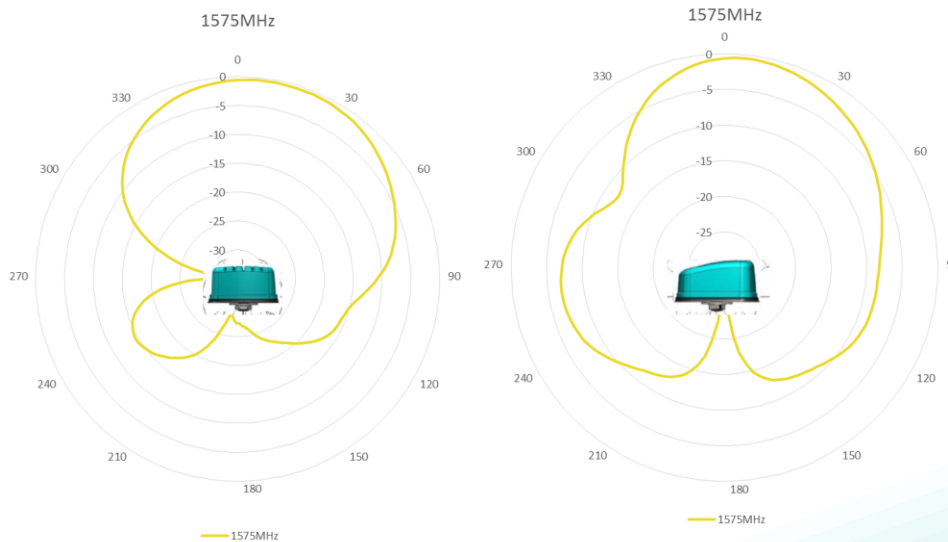
PART NUMBER: GPSMB301

CHARTS

BD2 RHCP patterns, measured with 4inch cables in free space



GPS & Galileo RHCP patterns, measured with 4inch cables in free space



Issue: 1637

In the effort to improve our products, we reserve the right to make changes judged to be necessary.

CONFIDENTIAL AND PROPRIETARY INFORMATION

This document contains confidential and proprietary information of Pulse Electronics, Inc. (Pulse) and is protected by copyright, trade secret and other state and federal laws. Its receipt or possession does not convey any rights to reproduce, disclose its contents, or to manufacture, use or sell anything it may describe. Reproduction, disclosure or use without specific written authorization of Pulse is strictly forbidden.

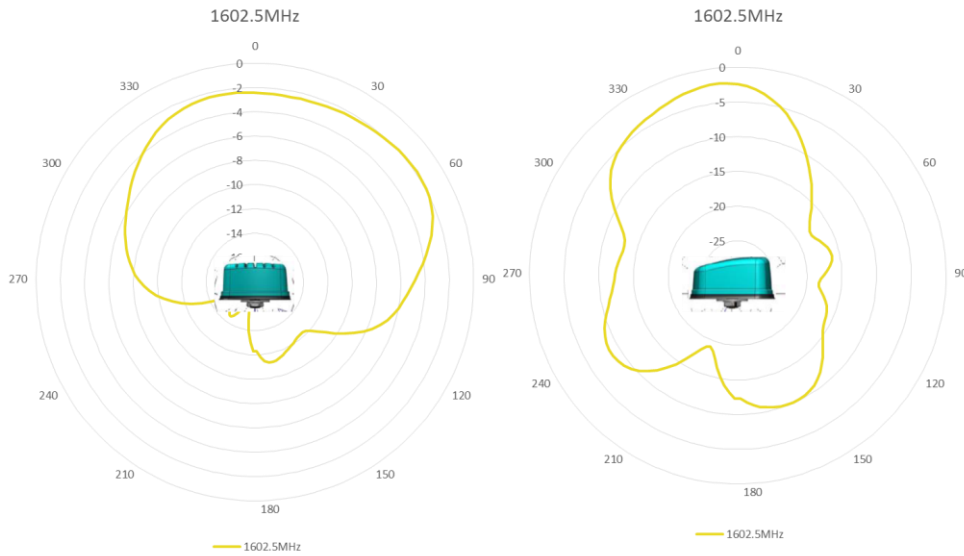
Description: MiMo LTE, GNSS Vehicle Mount Antenna

Series: Panther

PART NUMBER: GPSMB301

CHARTS

GLONASS RHCP patterns, measured with 4inch cables in free space



Issue: 1637

In the effort to improve our products, we reserve the right to make changes judged to be necessary.

CONFIDENTIAL AND PROPRIETARY INFORMATION

This document contains confidential and proprietary information of Pulse Electronics, Inc. (Pulse) and is protected by copyright, trade secret and other state and federal laws. Its receipt or possession does not convey any rights to reproduce, disclose its contents, or to manufacture, use or sell anything it may describe. Reproduction, disclosure or use without specific written authorization of Pulse is strictly forbidden.

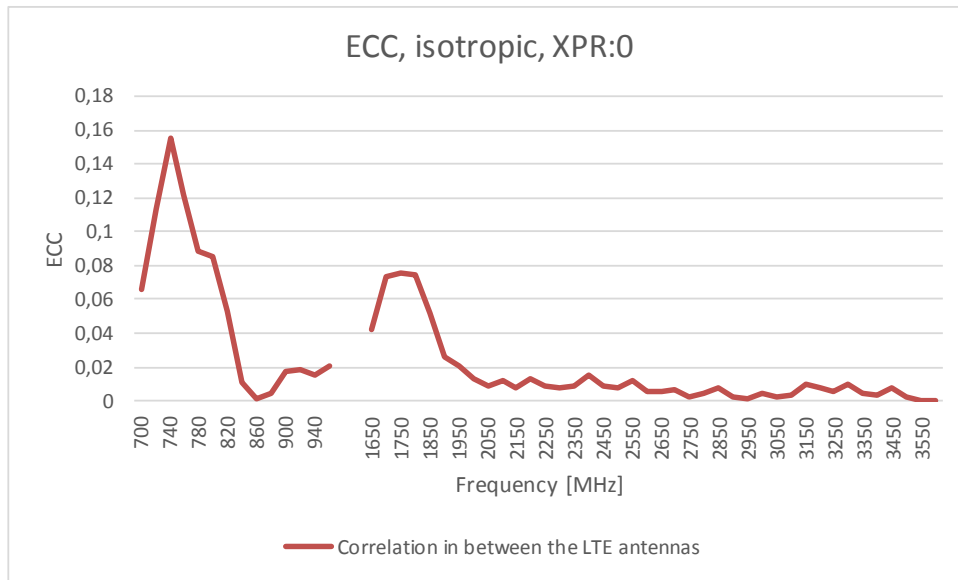
Description: MiMo LTE, GNSS Vehicle Mount Antenna

Series: Panther

PART NUMBER: GPSMB301

CHARTS

Envelope correlation coefficient - LTE 1 to LTE 2



Issue: 1637

In the effort to improve our products, we reserve the right to make changes judged to be necessary.

CONFIDENTIAL AND PROPRIETARY INFORMATION

This document contains confidential and proprietary information of Pulse Electronics, Inc. (Pulse) and is protected by copyright, trade secret and other state and federal laws. Its receipt or possession does not convey any rights to reproduce, disclose its contents, or to manufacture, use or sell anything it may describe. Reproduction, disclosure or use without specific written authorization of Pulse is strictly forbidden.

**Description: MiMo LTE, GNSS Vehicle Mount
Antenna**

Series: Panther

PART NUMBER: GPSMB301

PACKAGING

One antenna pack in one PE bag, 6 antennae in one box

X-ON Electronics

Largest Supplier of Electrical and Electronic Components

Click to view similar products for [Antennas](#) category:

Click to view products by [Pulse](#) manufacturer:

Other Similar products are found below :

[CCT FM1](#) [ABFT](#) [AD-NM-SMAF 001-0021](#) [CTC110](#) [MAF94149](#) [EXE902SF](#) [MMCX-SMA-100](#) [PDQ24496-91NF](#) [GAN30084EU](#) [930-033-R](#) [A08-HABUF-P5I](#) [AAF95035](#) [DG-ANT-20DP-BG-B](#) [APAMPGJ-141](#) [1513563-1](#) [OF86315-FNF](#) [OP24516DS-91NM](#) [A09-HASM-7](#) [EXE902MD](#) [EXE902SM](#) [SPDA17806/2170LAR](#) [APAMPG-117](#) [GPS1575SP26-004](#) [GPS15MGSMA](#) [CMD69273P-30NF](#) [CMQ69273-30NF](#) [RD2458-5-OTDR-NM](#) [RD2458-5-RSMA](#) [TRAB24/49003](#) [W4120ER5000](#) [W6102B0100](#) [YE572113-30RSMM](#) [108-00014-50](#) [SPDA17RP918](#) [OP24516SX-91NM](#) [OP24516SX-91RSMM](#) [CMQ69273P-30NF](#) [CMS69273-30NF](#) [CMS69273P-30NF](#) [TRAB24003N](#) [TRAB24003NP](#) [TRAB8213NP](#) [TRAB8903](#) [A09-Y8NF](#) [A09-Y11NF](#) [A09-HSM-7](#) [A09-F8NF-M](#) [A09-F5NF-M](#)