

PROPERTY OF DEUTSCH E.C.D.

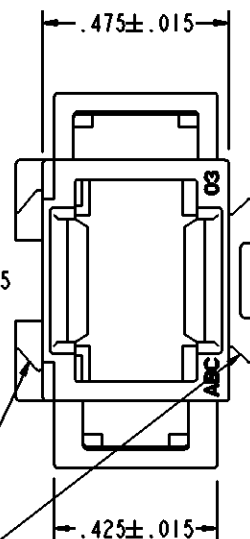
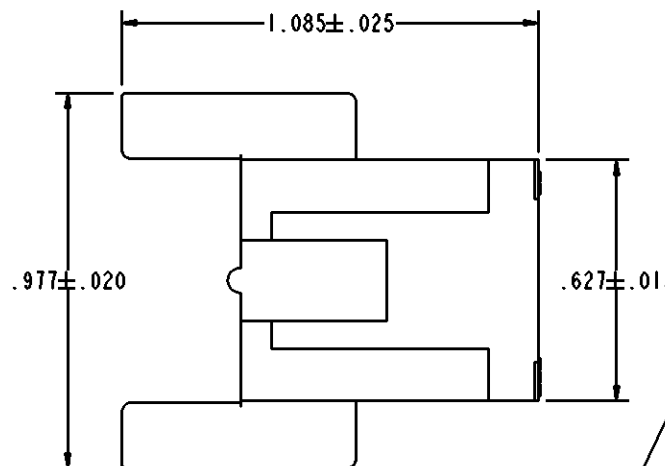
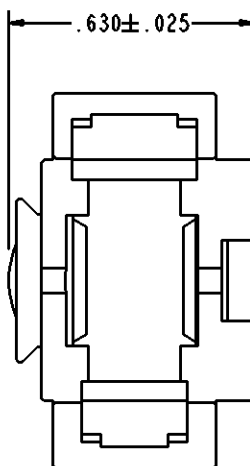
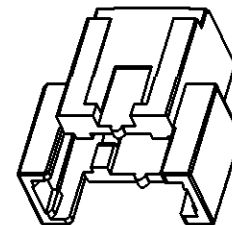
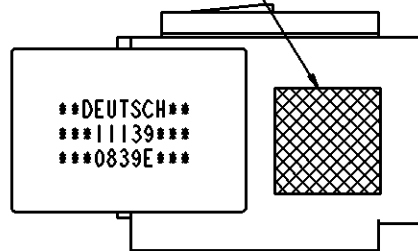
This drawing contains proprietary information that shall not be disclosed, duplicated, nor used in whole or in part for any purpose other than to evaluate this drawing.

| REVISIONS |                            |        |          |
|-----------|----------------------------|--------|----------|
| REV       | DESCRIPTION                | DATE   | APPROVED |
| -         | NEW RELEASE PER E.O. C7551 | 091218 | R.B.     |

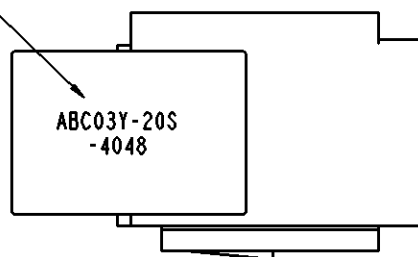
ABC03 \* - \* \* \* - \* \* \* \*

- MODIFICATION
- CONTACT STYLE  
P = PIN  
S = SOCKET
- MODULE ARRANGEMENT  
SEE ENVELOPE  
DRAWING 55500
- COLOR CODE COLOR  
N = NONE  
P = PURPLE  
R = RED  
O = ORANGE  
Y = YELLOW  
B = BLUE  
G = GREEN
- BASIC IDENTIFIER

INK COLOR CODE  
WHEN APPLICABLE



PRINTED PART NUMBER ONLY  
WHEN ORDERED WITH MODULE  
AND/OR MODIFICATION



INTERLOCKING DESIGN  
FOR STACKING AND MOUNTING

6. CONSULT FACTORY FOR AVAILABILITY.
5. CONNECTOR MAY BE ORDERED WITHOUT MODULES. PART NUMBER FOR CONNECTOR LESS MODULE IS ABC03\* (ALPH CHARACTER FOR \* REQUIRED, SEE PART NUMBER BREAKDOWN).
4. FOR ADDITIONAL INFORMATION, SEE INFORMATION DRAWING 3125-203-0000.
3. MATES WITH ABC06\* PLUG. ACCEPTS ALL DEUTSCH 1/2" MODULES. MODULE NOT REMOVEABLE ONCE INSTALLED. SEE ENVELOPE DRAWING 55500 FOR ADDITIONAL INFORMATION.
2. APPROXIMATE WEIGHT: .0073 POUNDS.
1. MATERIAL: POLYETHERIMIDE COLOR BLACK.

NOTES: UNLESS OTHERWISE SPECIFIED.

| SIGNATURE & DATE |                     |
|------------------|---------------------|
| DR               | A. RASMUSSEN 091217 |
| CHK              | R. BUXTON 091218    |
| PE               | A. RASMUSSEN 091217 |
| APPD             | A. RENGIFO 091218   |
| SCALE            | NONE WT             |

INLINE RECEPTACLE  
CONNECTOR  
ABC SERIES  
SINGLE MODULE  
ENVELOPE

|   |                |           |
|---|----------------|-----------|
| NBO   | 809            | MATL CODE |
| <b>DEUTSCH</b><br>ENGINEERED CONNECTING DEVICES<br>250 EDDIE JONES WAY<br>OCEANSIDE, CA 92058 |                |           |
|   | ABC03* - * * * |           |
|   | CODE 11139     | SHEET OF  |

## X-ON Electronics

Largest Supplier of Electrical and Electronic Components

*Click to view similar products for [Rectangular Mil Spec Connectors](#) category:*

*Click to view products by [TE Connectivity](#) manufacturer:*

Other Similar products are found below :

[006-1169-16](#) [CSR31343-0001-00000](#) [CSR31346-0001-A0001](#) [CSR31899-0001-00000](#) [CSR31900-0001-A0001](#) [CTJ-3D-05](#) [CTS-S16/16](#)  
[M55302/57A36X](#) [M55302/58-A70Y](#) [65002-062](#) [65008-D08](#) [CY4602-000](#) [732-8020-01](#) [732-8021-02 B](#) [77058-22-55PN](#) [81542-20](#)  
[86.030.0053.0](#) [1241346-1](#) [RM252-020-311-2900](#) [DMC-M 08-16 SNE](#) [1589051-4](#) [BACC65CAMA](#) [BACC65CAMN](#) [BACC65CP1PN](#)  
[BACI10BC1220PN](#) [18023-9](#) [HSB-D4S03DM222X](#) [2217548-1](#) [891-009-15SA2-BRT1T](#) [SIM2S100A](#) [1604996-2](#) [SMD25PN90L-4055](#)  
[1925036-4](#) [220A012-25225-0](#) [22628-10-6P-791](#) [CSR31343-0001-A0001](#) [CSR31899-0001-A0001](#) [CSR31900-0001-00000](#) [33526M11-08PD](#)  
[RE04-212S](#) [CTD160E01F-6148](#) [CTJ112E03B](#) [CTJ122E02D-8000](#) [CTJ-3D-12](#) [CTJ920E06N-513](#) [CTJ920E12N-513](#) [CTL-16-090](#) [CTR06-](#)  
[5100SY](#) [M55302/63A20H](#) [M55302/66-30H](#)