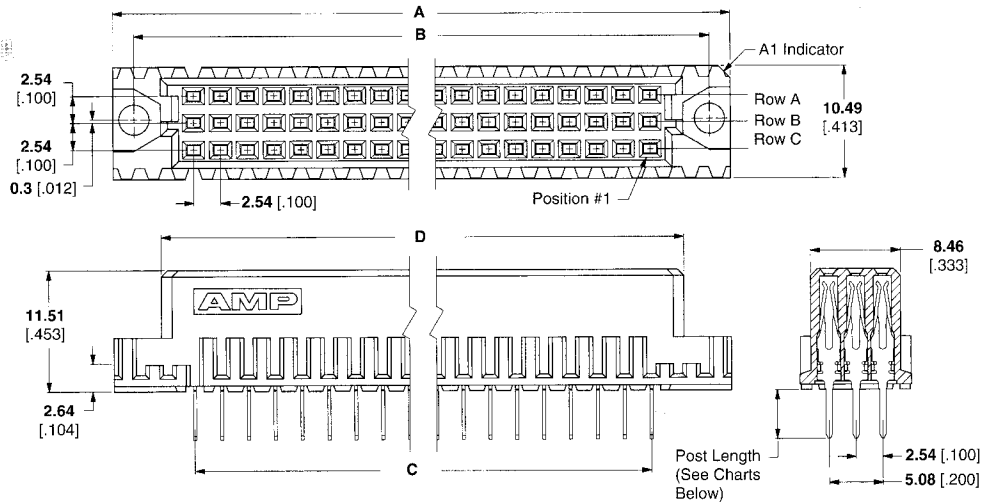
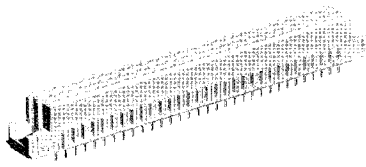


**Type C Vertical Receptacle Assemblies with Solder Posts for PC Board Mount**



**Material**

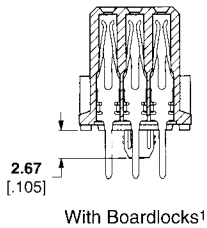
**Housing** — Glass filled polymer  
**Contacts** — Copper alloy

**Related Product Data**

- Common Bus Systems Application** — Page 4
- DIN Performance Levels** — Page 6
- Performance Specifications** — Page 7
- Mateable Connectors** — Pages 17, 18, 19, 28, 52-54
- PC Board Hole Layout** — Page 58
- Accessories** — Pages 64, 67, 68
- Technical Documents** — Page 74:  
DIN Specification 41612  
IEC Specification 60603-2  
Application Specification 114-9014  
Instruction Sheet 408-6784

**Standard Size**

Number of Positions	Rows Loaded	Dimensions				Post Length	DIN Level	Part Number
		A	B	C	D			
96	A,B,C	93.98 3.700	90.00 3.543	78.74 3.100	85.00 3.346	2.49 .098	II	535089-5
								536418-5 <sup>1</sup>
						2.90 .114	II	9-1393640-2
								535090-5
						3.30 .130	II	535090-4
								650963-5 <sup>1</sup>
								650963-4 <sup>1</sup>
							III	535090-9
						3.70 .145	II	7-1393641-0
								2-1393640-4
						4.50 .177	I	2-1393640-3 <sup>1</sup>
								2-1393641-7 <sup>1</sup>
3-1393641-1								
	III	6-1393642-8						
4.57 .180	II	535043-4						
		535043-5						
		536412-4 <sup>1</sup>						
13.00 .512	I	6-1393640-0						
		1-1393642-1						
2.49 .098	II	650458-5						
		536481-5 <sup>1</sup>						
		1-1393640-0						
		9-1393640-3						
2.90 .114	II	9-1393640-0 <sup>1</sup>						
		9-1393642-7 <sup>2</sup>						
		650956-5						
3.30 .130	II	650983-5 <sup>1</sup>						
		2-1393640-5						
4.50 .177	II	3-1393641-5						
		2-1393641-8 <sup>1</sup>						
		6-1393642-9						
	III	6-1393642-7 <sup>1</sup>						
4.57 .180	II	650408-5						
		650408-4						
13.00 .512	II	1-1393642-6						



<sup>1</sup> With Boardlocks  
<sup>2</sup> Flux tight

**Note:** Select load available upon request, contact Product Engineering.

Type C Assemblies

## X-ON Electronics

Largest Supplier of Electrical and Electronic Components

*Click to view similar products for [DIN 41612 Connectors](#) category:*

*Click to view products by [TE Connectivity](#) manufacturer:*

Other Similar products are found below :

[09231126901](#) [PCN10F-24P-2.54DS\(72\)](#) [004.767](#) [02221602702](#) [024069](#) [602427301412000](#) [013275](#) [691327-1](#) [74670-0732](#) [74680-0340](#)  
[75880-0015](#) [76453-0014](#) [86093159ALF](#) [923454](#) [QLC260R](#) [120X10099X](#) [120X10019X](#) [120X10089X](#) [120X10129X](#) [121A10039X](#)  
[121A10309X](#) [122A10019X](#) [122A10029X](#) [122A10249X](#) [122A10669X](#) [122A11089X](#) [122A13089X](#) [121B10409X](#) [122A10089X](#)  
[122A10129X](#) [122A10349X](#) [122A13359X](#) [1377391-4](#) [DIN-048CPC-SR1-MH](#) [1393583-2](#) [1393726-7](#) [140X10059X](#) [140X10129X](#) [143-1913-](#)  
[000](#) [143-1908-000](#) [1484472-1](#) [173052](#) [2110070-1](#) [2110070-2](#) [CBC20T00-008FDS5-0-1-002VR](#) [983-0SE12-12P6](#) [17041102202](#) [172699-](#)  
[5036](#) [173051](#) [20](#) [8457096](#) [010](#) [025](#)