



General data

RAFIX 22QR control component range

- For a mounting hole diameter of 22.3 mm to IEC 60947
- 250V/10A max.
- Water-jet proof IP65
- 2 collar shapes
- The lamps of the pushbuttons can also be replaced from the front
- The contact blocks (silver or gold contacts) snap onto the actuators with a coupling
- Screw terminals, cage clamp terminals or RJ12 connector
- 3 NC + 3 NO max.

The specified data apply only if actuators/signal indicators are combined with contact blocks and lamp sockets within the same product range.

RAFIX
22 QR

Content

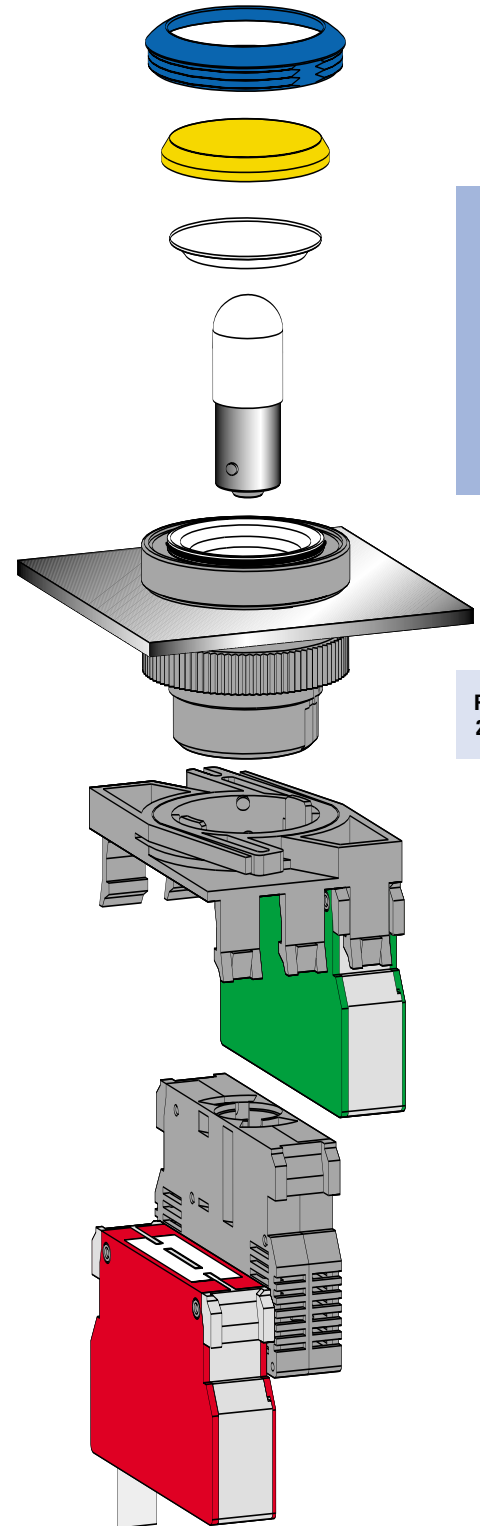
RAFIX 22 QR control component assemblies	2 - 98
RAFIX 22 QR assembly: Pushbutton, round, illuminated, flush lens, metallized front ring and silver contact block	2 - 99
RAFIX 22 QR assembly: Emergency stop pushbutton and silver contact block	2 - 99
RAFIX 22 QR assembly: Signal indicator and lamp socket	2 - 100
RAFIX 22 QR pushbutton	2 - 102
RAFIX 22 QR pushbutton, flush lens, round collar	2 - 103
RAFIX 22 QR pushbutton, protruding lens, round collar	2 - 104
RAFIX 22 QR pushbutton, protruding front ring, round collar	2 - 105
RAFIX 22 QR pushbutton, flush lens, square collar	2 - 106
RAFIX 22 QR pushbutton, protruding lens, square collar	2 - 107
RAFIX 22 QR pushbutton, protruding front ring, square collar	2 - 108
RAFIX 22 QR selector switch	2 - 110
RAFIX 22 QR selector switch, round collar, short handle	2 - 111
RAFIX 22 QR selector switch, round collar, long handle	2 - 112
RAFIX 22 QR selector switch, square collar, short handle	2 - 113
RAFIX 22 QR selector switch, square collar, long handle	2 - 114
RAFIX 22 QR keylock switch	2 - 116
RAFIX 22 QR keylock switch, round collar	2 - 117
RAFIX 22 QR keylock switch, square collar	2 - 118

RAFIX 22 QR mushroom-headed pushbutton	2 - 120
RAFIX 22 QR mushroom-headed pushbutton 40 mm, round collar	2 - 121
RAFIX 22 QR mushroom-headed pushbutton 40 mm, illuminated, round collar	2 - 121
RAFIX 22 QR mushroom-headed pushbutton 60 mm, round collar	2 - 122
RAFIX 22 QR mushroom-headed pushbutton 40 mm, square collar	2 - 122
RAFIX 22 QR mushroom-headed pushbutton 40 mm, illuminated, square collar	2 - 123
RAFIX 22 QR mushroom-headed pushbutton 60 mm, square collar	2 - 123
RAFIX 22 QR emergency stop pushbutton, dupe-proof to EN 418	2 - 124
RAFIX 22 QR emergency stop pushbutton, dupe-proof to EN 418	2 - 125
RAFIX 22 QR emergency stop pushbutton, dupe-proof to EN 418, with indication to EN 60947-1	2 - 125
RAFIX 22 QR emergency stop pushbutton, dupe-proof to EN 418, with keylock	2 - 126
RAFIX 22 QR emergency stop pushbutton, dupe-proof to EN 418, illuminated	2 - 126
RAFIX 22 QR twin pushbutton	2 - 128
RAFIX 22 QR twin pushbutton, oval collar	2 - 129
RAFIX 22 QR twin pushbutton, rectangular collar	2 - 130
RAFIX 22 QR potentiometer drive	2 - 132
RAFIX 22 QR potentiometer drive, round collar	2 - 133
RAFIX 22 QR potentiometer drive, square collar	2 - 133
RAFIX 22 QR buzzer	2 - 134
RAFIX 22 QR buzzer, round collar	2 - 135
RAFIX 22 QR buzzer, square collar	2 - 135
RAFIX 22 QR signal indicator	2 - 136
RAFIX 22 QR signal indicator, round collar	2 - 137
RAFIX 22 QR signal indicator, square collar	2 - 137
RAFIX 22 QR contact blocks with silver contacts, screw terminals and cage clamp terminals	2 - 138
RAFIX 22 QR contact block with silver contacts	2 - 139
RAFIX 22 QR contact block assembly, with coupling, without lamp socket, silver contacts	2 - 140
RAFIX 22 QR contact block assembly, with coupling and lamp socket, silver contacts	2 - 141
RAFIX 22 QR contact blocks with gold contacts, screw terminals and cage clamp terminals	2 - 142
RAFIX 22 QR contact block with gold contacts	2 - 143
RAFIX 22 QR contact block assembly, with coupling, without lamp socket, gold contacts	2 - 144
RAFIX 22 QR contact block assembly, with coupling and lamp socket, gold contacts	2 - 145
Contact block with coupling, gold contacts, RJ 12 connector, integrated LED	2 - 146
Contact block with coupling, gold contacts, RJ 12 connector, integrated LED	2 - 147
RAFIX 22 QR lamp sockets BA 9s (MBC/MCC), screw terminals and cage clamp terminals	2 - 148
RAFIX 22 QR lamp socket, without coupling	2 - 149
RAFIX 22 QR lamp socket assembly, with coupling	2 - 150
RAFIX 22 QR lamp sockets with integrated LED, screw terminals	2 - 152
RAFIX 22 QR lamp socket with integrated red LED, without coupling	2 - 153
RAFIX 22 QR special accessories	2 - 154
Housings for flush pushbuttons	2 - 154
Lenses for flush pushbuttons	2 - 155
Front ring	2 - 156
RAFIX 22 QR plastic front ring with protective cap	2 - 156
Label holder	2 - 157
Legend labe to clip label holder 5.07.620.xxx	2 - 157
Coupling	2 - 158
Blanking cap	2 - 158
Ring nut	2 - 159
Lamp tester	2 - 159
Protective cover, suitable for pushbuttons with flush lens	2 - 159
Marking tag	2 - 160
Insulating housing IP65 for RAFIX 22 QR	2 - 160
Emergency stop label plate	2 - 161



Contact blocks marked with different colours for ease of identification in stock and when connecting.

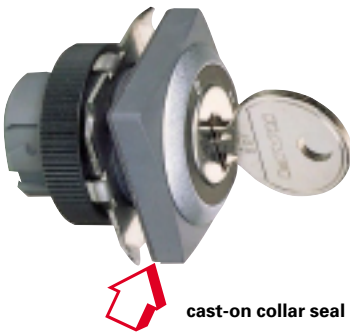
- NC contacts: red
- NO contacts: green
- NC/NO contacts: red/green
- Lamp socket: black
- Silver contacts: basic housing colour is black
- Gold contacts: basic housing colour is grey
- The terminals associated with a contact pair are colour coded on the connection side and marked with the respective contact numbers.



2

RAFIX 22 QR

The lamps of pushbuttons and signal lamps can be replaced from the front. This method saves time and increases safety since it eliminates the need for accessing the machine/control station interior and handling live cables for lamp replacement. After unscrewing the front ring, the lens can be removed and the lamp replaced.

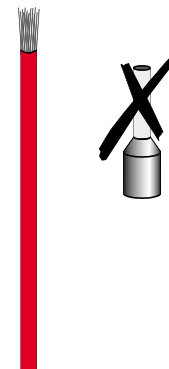


cast-on collar seal

The components feature a removable locating lug. If installed without locating lug, the ring nut with claw can be used. Accurate alignment of the actuator can be achieved behind the front panel. The cast-on collar seal can not get lost nor be twisted during installation and allows single-person assembly: the actuator is held in the mounting hole by the cast-on seal and can then be fixed by screwing from the rear.



First, snap the lamp socket and contact blocks into the coupling. Then snap the assembly on to the actuator. To release it, the bayonet must be pressed (prevents inadvertent releasing at the same time).



Terminals

Screw terminals, cage clamp or RJ 12

The RAFIX 22 QR contact blocks are available in three different connection styles as required for your application:

Screw terminals

The terminals are open and the captive screws are mounted in the terminal recess.

Cage clamp terminals

Simply insert a screwdriver to open the terminal, insert the cable and remove the screwdriver to close the terminal.

RJ 12-terminal

Just plug in the cable with a RJ 12 connector. Details see page 25.

2

Your advantage:

This offers your savings in three ways:

- Drastically reduced assembly time thanks to wire insertion from the rear, i.e. no more bending and lateral insertion of the wires required.
- You save material: No wire end sleeves are required.
- You save the time previously required for mounting the wire end sleeves.

RAFIX 22 QR



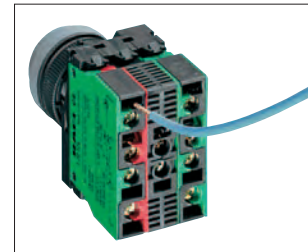
Sealed for life against humidity and dirt

The special seal reliably prevents moisture, oil and dust from penetrating to the contact block. In contrast to other sealing types which move up and down the shaft, this special seal is firmly seated on the housing (degree of protection IP 65 to DIN).

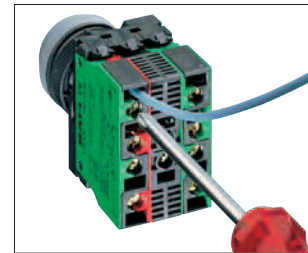


Assembly

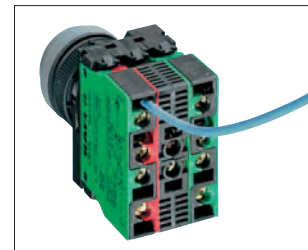
Screw terminals



Insert the wire.

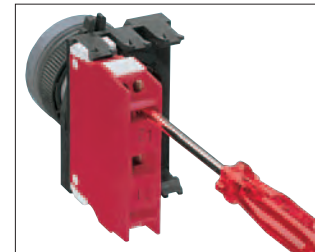


Tighten the screw.

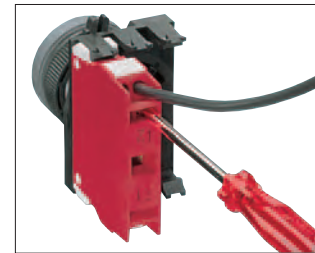


Done.

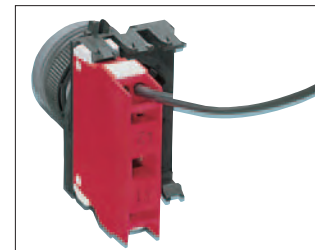
Cage clamp terminals



Open the terminal.



Insert the wire.



Remove the screwdriver.

Versatility of design for customized panels

The RAFIX 22 QR system does not only have a particularly low profile and is also available in many different versions. Your design options for your customized panels are nearly unlimited thanks to the interchangeable front rings and lenses. In this way you can achieve an attractive design while ensuring safe operation of your equipment at the same time.

RAFIX 22 QR components are available either with a round or with a square collar.

RAFIX 22 QR

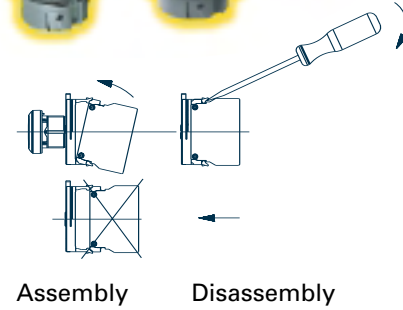
The RAFIX 22 QR control component range meets all the technical requirements and current standards for control units. The system is of modular design. Actuators, contact blocks and lamp sockets can be

combined freely. This means that you may implement modifications of design or configuration even at the last minute. An additional positive effect is the reduction of stockholding costs.



Sequence of assembly/disassembly at screw terminals and cage clamp terminals

- Fix the actuator in the front panel with the ring nut.
- Snap the individual elements (a maximum three contact blocks or two contact blocks together with a lamp socket) in the coupling. You can install them on any assembling axis.
- Insert the lamp or LED into the lamp socket.

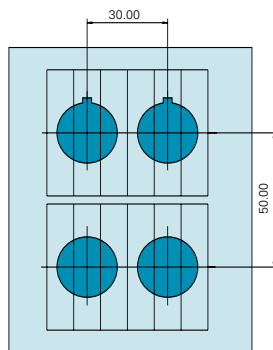


2

Approvals

● = approved, ○ = pending

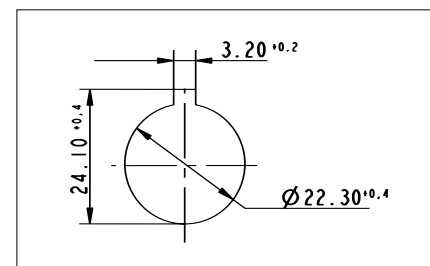
Part no.	BG zert.	VDE 0660	10/15	ULc	GL
1.20 124.---	○	○	●	●	○
1.20 125.---	○	○	●	●	○
1.30 243.---	○			●	
1.71 213.---		○	●	●	○
1.71 214.---		○	●	●	○



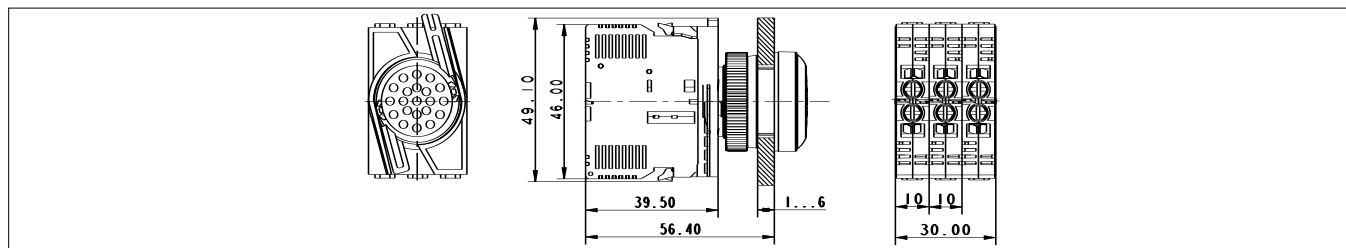
Panel cut-out according to IEC 60947-5-1

All actuators are provided with a locating lug which may be removed using a screwdriver for installation into mounting holes if required.

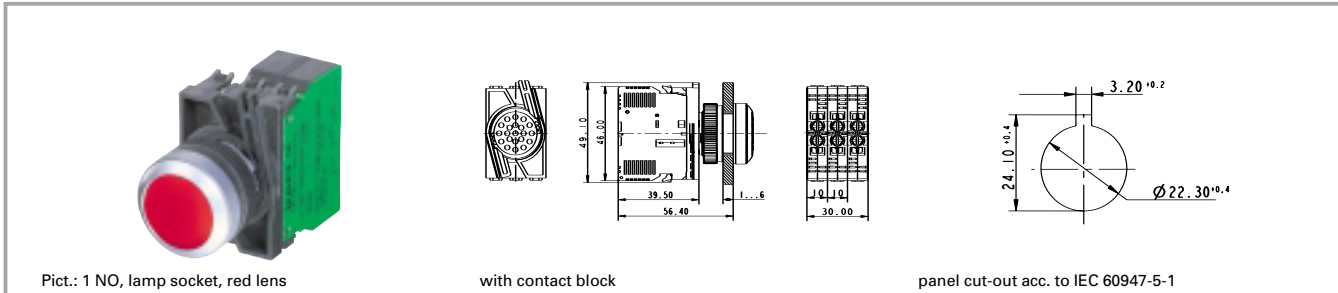
With a grid spacing of 30 mm horizontally and 50 mm vertically, the collars of the square actuators touch each other. We recommend to use the same grid spacing also for the round collar shapes (IEC 947).



Dimensioned drawing



RAFIX 22 QR control component assemblies



Pict.: 1 NO, lamp socket, red lens

with contact block

panel cut-out acc. to IEC 60947-5-1

2

Technical data

General information

Form of lens	see order block
Colour of lens	see order block
Colour of front ring	see order block
Form of collar	round

Dimensions

Key grid	50 x 30 mm
Diameter of collar	29.8 mm
Overall height	see order block
Mounting depth	56.4 mm
Mounting hole	22.3 mm

Mechanical design

Mounting	ring nut
Contact function	see order block
Illuminability	see order block
Contact arrangement	see order block

Mechanical characteristics

Operating force max.	approx. 5 N for 1 switching element
Robustness min.	100 N

Electrical characteristics

Protection class	II
------------------	----

Other specifications

Degree of protection from front side	IP65
Storage temperature min.	-40 °C
Storage temperature max.	+80 °C
Resistance to constant environment	according to IEC 600 68-2-3 and 2-30
Resistance at variable environment	according to IEC 600 68-2-14 and 2-33
Ambient temp. operating min.	-25 °C
Ambient temp. operating max.	+70 °C
Approvals	ENEC 10/15, ULC

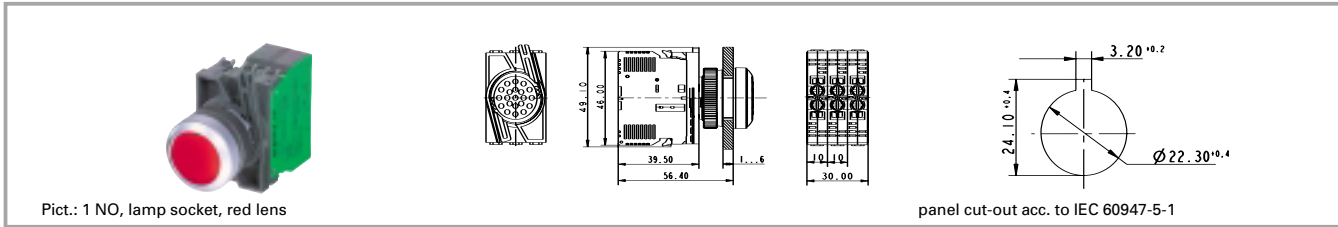
RAFIX
22 QR

Accessories RAFIX 22 QR control component assemblies

Description	Photo	Order no.	Page
Filament lamp, BA 9s base (MBC/MCC), 24 - 30 V		1.90.060.133/0000	5 - 8
Neon lamp BA 9s (MBC/MCC), 220 V AC (red)		1.90.560.102/0000	5 - 9
LED BA 9s (MBC/MCC) superbright, white, 24 V		1.90.690.345/0000	5 - 20
Fixing spanner for ring nut and front ring		5.05.800.062/0000	5 - 25
Label holder, round collar, with adhesive tape and release liner on back		5.07.620.010/0000	2 - 157

RAFIX 22 QR

RAFIX 22 QR assembly: Pushbutton, round, illuminated, flush lens, metallized front ring and silver contact block



Contact arrangement	Contact function	Colour of lens	Order no. complete	Order no. single parts	
				Contact block	Actuator
1 NO	momentary	transparent colourless	9.20.124.001/1000	1.20.124.022/0000	1.30.240.021/1000
1 NO	momentary	transparent red	9.20.124.001/1300	1.20.124.022/0000	1.30.240.021/1300
1 NO	momentary	transparent yellow	9.20.124.001/1400	1.20.124.022/0000	1.30.240.021/1400
1 NO	momentary	transparent green	9.20.124.001/1500	1.20.124.022/0000	1.30.240.021/1500
1 NO	momentary	transparent blue	9.20.124.001/1600	1.20.124.022/0000	1.30.240.021/1600

Technical data see page 2 - 98

Accessories:

Filament lamp, BA 9s base (MBC/MCC), 12 - 15 V: **1.90.060.132/0000**
 Filament lamp, BA 9s base (MBC/MCC), 24 - 30 V: **1.90.060.133/0000**
 Filament lamp, BA 9s base (MBC/MCC), 110 - 130 V: **1.90.060.137/0000**
 LED BA 9s (MBC/MCC) superbright, red, 24 V: **1.90.690.341/0000**
 LED BA 9s (MBC/MCC) superbright, green, 24 V: **1.90.690.342/0000**
 LED BA 9s (MBC/MCC) superbright, yellow, 24 V: **1.90.690.343/0000**
 LED BA 9s (MBC/MCC) superbright, blue, 24 V: **1.90.690.344/0000**
 LED BA 9s (MBC/MCC) superbright, white, 24 V: **1.90.690.345/0000**
 Legend insert without legend: **5.70.800.000/2000**

RAFIX
22 QR

RAFIX 22 QR assembly: Emergency stop Twist to Reset pushbutton and silver contact block



Contact arrangement	Contact function	Colour of lens	Order no. complete	Order no. single parts	
				Contact block	Actuator
1 NC	latching	opaque red	9.20.124.030/0300	1.20.124.001/0000	1.30.243.501/0300
1 NC + 1 NO	latching	opaque red	9.20.124.031/0300	1.20.124.017/0000	1.30.243.501/0300

Technical data see page 2 - 98

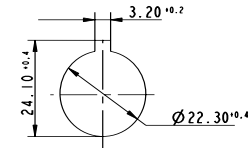
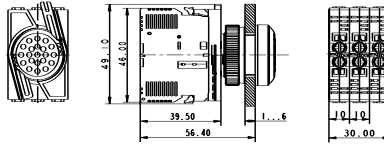
Accessories:

Emergency stop label, yellow, round 60 mm, PVC adhesive, with legend "NOT-AUS": 5.76.204.101/0400
 Emergency stop label, yellow, round 60 mm, rigid PVC, with legend "EMERGENCY-STOP/ARRET D'URGENCE": 5.76.207.002/0400

RAFIX 22 QR assembly: Signal indicator and lamp socket



Pict.: Signal indicator, yellow lens



panel cut-out acc. to IEC 60947-5-1

2

Contact arrangement	Contact function	Colour of lens	Order no. complete	Order no. single parts	
				Contact block	Actuator
		transparent colourless	9.71.213.001/1000	1.71.213.001/0000	1.74.505.501/1000
		transparent red	9.71.213.001/1300	1.71.213.001/0000	1.74.505.501/1300
		transparent yellow	9.71.213.001/1400	1.71.213.001/0000	1.74.505.501/1400
		transparent green	9.71.213.001/1500	1.71.213.001/0000	1.74.505.501/1500
		transparent blue	9.71.213.001/1600	1.71.213.001/0000	1.74.505.501/1600

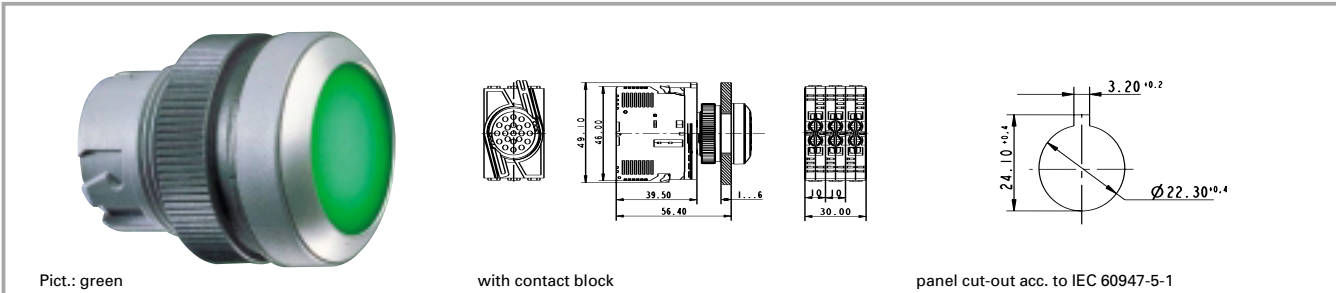
Technical data see page 2 - 98

Accessories:

- Filament lamp, BA 9s base (MBC/MCC), 12 - 15 V: **1.90.060.132/0000**
- Filament lamp, BA 9s base (MBC/MCC), 24 - 30 V: **1.90.060.133/0000**
- Filament lamp, BA 9s base (MBC/MCC), 110 - 130 V: **1.90.060.137/0000**
- LED BA 9s (MBC/MCC) superbright, red, 24 V: **1.90.690.341/0000**
- LED BA 9s (MBC/MCC) superbright, green, 24 V: **1.90.690.342/0000**
- LED BA 9s (MBC/MCC) superbright, yellow, 24 V: **1.90.690.343/0000**
- LED BA 9s (MBC/MCC) superbright, blue, 24 V: **1.90.690.344/0000**
- LED BA 9s (MBC/MCC) superbright, white, 24 V: **1.90.690.345/0000**
- Legend insert without legend: 5.70.803.000/2000

RAFIX
22 QR

RAFIX 22 QR pushbutton



Pict.: green

with contact block

panel cut-out acc. to IEC 60947-5-1

2

Technical data

General information

Form of lens	see order block
Colour of lens	see order block
Colour of front ring	see order block
Form of collar	see order block

Dimensions

Length of collar	see order block
Width of collar	see order block
Overall height	see order block
Mounting depth with contact block without cable	56.4 mm
Mounting hole	22.3 mm
Key grid	50 x 30 mm
Diameter of collar	see order block

Mechanical design

Mounting	ring nut
Contact function	see order block
Illuminability	see order block

Mechanical characteristics

Operating travel	4 mm
Operating force max.	approx. 5 N for 1 switching element
Robustness min.	100 N

Other specifications

Operating life (operations)	1 million momentary/ 0.5 million latching
Degree of protection from front side	IP65
Ambient temp. operating min.	-25 °C
Ambient temp. operating max.	+70 °C
Storage temperature min.	-40 °C
Storage temperature max.	+80 °C
Resistance to constant environment	according to IEC 600 68-2-3 and 2-30
Resistance at variable environment	according to IEC 600 68-2-14 and 2-33

RAFIX
22 QR

Accessories RAFIX 22 QR pushbutton

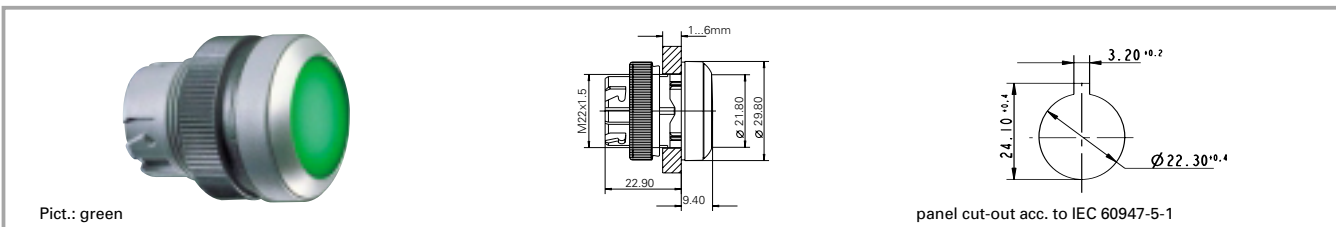
Description	Photo	Order no.	Page
RAFIX 22 QR contact block with silver contacts, with coupling, without lamp socket, screw terminals, 1 NO		1.20.124.002/0000	2 - 140
RAFIX 22 QR contact block with silver contacts, with coupling and lamp socket, screw terminals, 1 NC + 1 NO		1.20.124.027/0000	2 - 141
RAFIX 22 QR contact block with gold contacts, with coupling and lamp socket, screw terminals, 1 NO		1.20.124.122/0000	2 - 145
RAFIX 22 QR contact block with silver contacts, with coupling and lamp socket, cage clamp terminals, 1 NO, 1		1.20.125.025/0000	2 - 141
Filament lamp, BA 9s base (MBC/MCC), 24 - 30 V		1.90.060.133/0000	5 - 8
LED BA 9s (MBC/MCC) superbright, white, 24 V		1.90.690.345/0000	5 - 20

Accessories RAFX 22 QR pushbutton

Description	Photo	Order no.	Page
Fixing spanner for ring nut and front ring		5.05.800.062/0000	5 - 25
Label holder, round collar, with adhesive tape and release liner on back		5.07.620.010/0000	2 - 157

For other contact blocks, refer to the chapter „Contact blocks“; for additional accessories, refer to „RAFIX 22 QR special accessories“.

RAFIX 22 QR pushbutton, flush lens, round collar



Pict.: green

Illuminability	Colour of lens	Order no. momentary		Order no. latching	
		Plastic front ring	Metallized front ring	Plastic front ring	Metallized front ring
yes	transparent white	1.30.240.001/10xx	1.30.240.021/1000	1.30.240.011/10xx	1.30.240.031/1000
yes	transparent red	1.30.240.001/13xx	1.30.240.021/1300	1.30.240.011/13xx	1.30.240.031/1300
yes	transparent yellow	1.30.240.001/14xx	1.30.240.021/1400	1.30.240.011/14xx	1.30.240.031/1400
yes	transparent green	1.30.240.001/15xx	1.30.240.021/1500	1.30.240.011/15xx	1.30.240.031/1500
yes	transparent blue	1.30.240.001/16xx	1.30.240.021/1600	1.30.240.011/16xx	1.30.240.031/1600
no	opaque black	1.30.240.101/01xx	1.30.240.121/0100	1.30.240.111/01xx	1.30.240.131/0100
no	opaque white	1.30.240.101/02xx	1.30.240.121/0200	1.30.240.111/02xx	1.30.240.131/0200
no	opaque red	1.30.240.101/03xx	1.30.240.121/0300	1.30.240.111/03xx	1.30.240.131/0300
no	opaque yellow	1.30.240.101/04xx	1.30.240.121/0400	1.30.240.111/04xx	1.30.240.131/0400
no	opaque green	1.30.240.101/05xx	1.30.240.121/0500	1.30.240.111/05xx	1.30.240.131/0500
no	opaque blue	1.30.240.101/06xx	1.30.240.121/0600	1.30.240.111/06xx	1.30.240.131/0600
no	opaque slate-grey	1.30.240.101/07xx	1.30.240.121/0700	1.30.240.111/07xx	1.30.240.131/0700

Technical data see page 2 - 102

Accessories:

- Front ring, plastic with protective cap, slate grey: 5.05.004.914/0700
- Protective cover, auto-closing: 5.05.511.194/0000
- Protective cover, latching: 5.05.511.195/0000
- Legend insert without legend: 5.70.800.000/2000

xx = Front ring colour: black = 01, slate grey = 07, silver grey = 08

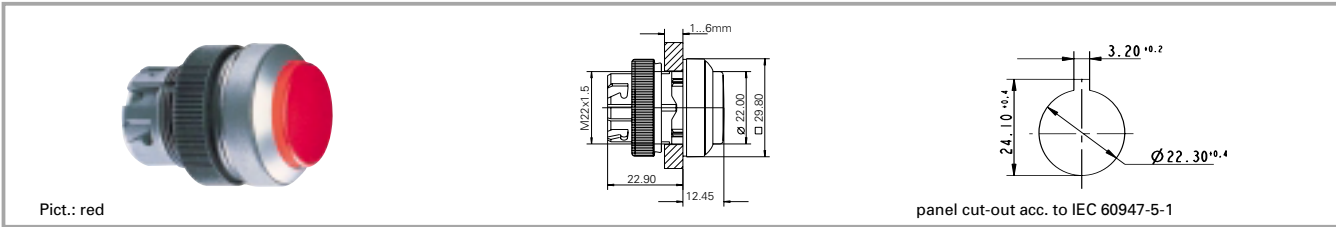
Pushbuttons with plastic front ring and white lens are also available with the following front ring colours: red = 03, yellow = 04, green = 05, blue = 06. Other colour combinations on request.

Order numbers **1.30.240.001/—08**, **1.30.240.011/—08** and **1.30.240.101/—08** (with silver grey plastic front ring) are **stock items**.

Control components

Stock items are marked by **bold printed** order numbers.

RAFIX 22 QR pushbutton, protruding lens, round collar



Pict.: red

panel cut-out acc. to IEC 60947-5-1

2

RAFIX
22 QR

Illuminability	Colour of lens	Order no. momentary		Order no. latching	
		Plastic front ring	Metallized front ring	Plastic front ring	Metallized front ring
yes	transparent white	1.30.240.201/10xx	1.30.240.221/1000	1.30.240.211/10xx	1.30.240.231/1000
yes	transparent red	1.30.240.201/13xx	1.30.240.221/1300	1.30.240.211/13xx	1.30.240.231/1300
yes	transparent yellow	1.30.240.201/14xx	1.30.240.221/1400	1.30.240.211/14xx	1.30.240.231/1400
yes	transparent green	1.30.240.201/15xx	1.30.240.221/1500	1.30.240.211/15xx	1.30.240.231/1500
yes	transparent blue	1.30.240.201/16xx	1.30.240.221/1600	1.30.240.211/16xx	1.30.240.231/1600
no	opaque black	1.30.240.301/01xx	1.30.240.321/0100	1.30.240.311/01xx	1.30.240.331/0100
no	opaque white	1.30.240.301/02xx	1.30.240.321/0200	1.30.240.311/02xx	1.30.240.331/0200
no	opaque red	1.30.240.301/03xx	1.30.240.321/0300	1.30.240.311/03xx	1.30.240.331/0300
no	opaque yellow	1.30.240.301/04xx	1.30.240.321/0400	1.30.240.311/04xx	1.30.240.331/0400
no	opaque green	1.30.240.301/05xx	1.30.240.321/0500	1.30.240.311/05xx	1.30.240.331/0500
no	opaque blue	1.30.240.301/06xx	1.30.240.321/0600	1.30.240.311/06xx	1.30.240.331/0600
no	opaque slate-grey	1.30.240.301/07xx	1.30.240.321/0700	1.30.240.311/07xx	1.30.240.331/0700

Technical data see page 2 - 102

Accessories:

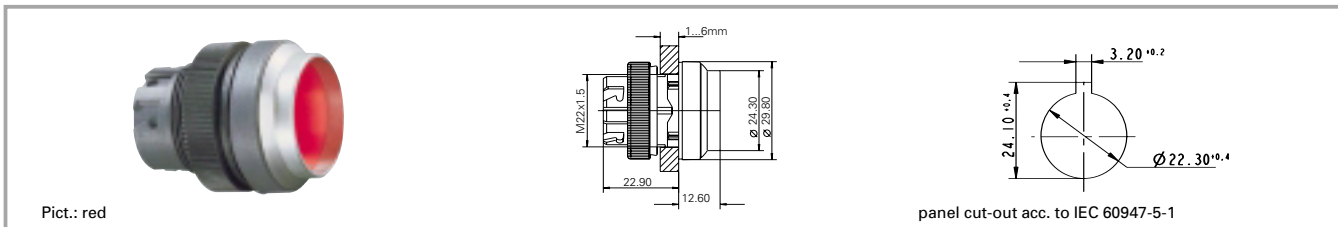
Legend insert without legend: **5.70.802.000/2000**

xx = Front ring colour: black = 01, slate grey = 07, silver grey = 08

Pushbuttons with plastic front ring and white lens are also available with the following front ring colours: red = 03, yellow = 04, green = 05, blue = 06. Other colour combinations on request.

Order numbers **1.30.240.201/—08** and **1.30.240.211/—08** (with silver grey plastic front ring) are **stock items**.

RAFIX 22 QR pushbutton, protruding front ring, round collar



Illuminability	Colour of lens	Order no. momentary		Order no. latching	
		Plastic front ring	Metallized front ring	Plastic front ring	Metallized front ring
yes	transparent white	1.30.240.401/10xx	1.30.240.421/1000		
yes	transparent red	1.30.240.401/13xx	1.30.240.421/1300		
yes	transparent yellow	1.30.240.401/14xx	1.30.240.421/1400		
yes	transparent green	1.30.240.401/15xx	1.30.240.421/1500		
yes	transparent blue	1.30.240.401/16xx	1.30.240.421/1600		
no	opaque black	1.30.240.501/01xx	1.30.240.521/0100		
no	opaque white	1.30.240.501/02xx	1.30.240.521/0200		
no	opaque red	1.30.240.501/03xx	1.30.240.521/0300		
no	opaque yellow	1.30.240.501/04xx	1.30.240.521/0400		
no	opaque green	1.30.240.501/05xx	1.30.240.521/0500		
no	opaque blue	1.30.240.501/06xx	1.30.240.521/0600		
no	opaque slate-grey	1.30.240.501/07xx	1.30.240.521/0700		

2

RAFIX
22 QR

Technical data see page 2 - 102

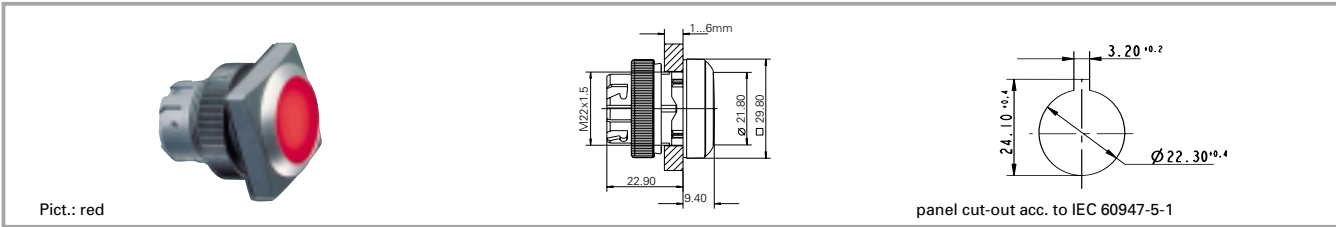
Accessories:

Legend insert without legend: 5.70.800.000/2000

xx = Front ring colour: black = 01, slate grey = 07, silver grey = 08

The protruding collar offers protection against inadvertent operation and thereby fulfils the safety requirements of various machinery manufacturers, particularly from the printing industry.

RAFIX 22 QR pushbutton, flush lens, square collar



Pict.: red

panel cut-out acc. to IEC 60947-5-1

2

RAFIX
22 QR

Illuminability	Colour of lens	Order no. momentary		Order no. latching	
		Plastic front ring	Metallized front ring	Plastic front ring	Metallized front ring
yes	transparent white	1.30.240.051/10xx	1.30.240.071/1000	1.30.240.061/10xx	1.30.240.081/1000
yes	transparent red	1.30.240.051/13xx	1.30.240.071/1300	1.30.240.061/13xx	1.30.240.081/1300
yes	transparent yellow	1.30.240.051/14xx	1.30.240.071/1400	1.30.240.061/14xx	1.30.240.081/1400
yes	transparent green	1.30.240.051/15xx	1.30.240.071/1500	1.30.240.061/15xx	1.30.240.081/1500
yes	transparent blue	1.30.240.051/16xx	1.30.240.071/1600	1.30.240.061/16xx	1.30.240.081/1600
no	opaque black	1.30.240.151/01xx	1.30.240.171/0100	1.30.240.161/01xx	1.30.240.181/0100
no	opaque white	1.30.240.151/02xx	1.30.240.171/0200	1.30.240.161/02xx	1.30.240.181/0200
no	opaque red	1.30.240.151/03xx	1.30.240.171/0300	1.30.240.161/03xx	1.30.240.181/0300
no	opaque yellow	1.30.240.151/04xx	1.30.240.171/0400	1.30.240.161/04xx	1.30.240.181/0400
no	opaque green	1.30.240.151/05xx	1.30.240.171/0500	1.30.240.161/05xx	1.30.240.181/0500
no	opaque blue	1.30.240.151/06xx	1.30.240.171/0600	1.30.240.161/06xx	1.30.240.181/0600
no	opaque slate-grey	1.30.240.151/07xx	1.30.240.171/0700	1.30.240.161/07xx	1.30.240.181/0700

Technical data see page 2 - 102

Accessories:

Front ring, plastic with protective cap, slate grey: 5.05.004.914/0700

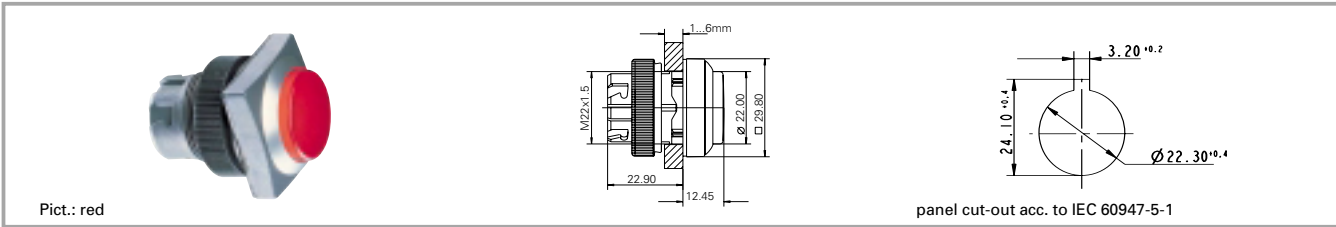
Legend insert without legend: 5.70.800.000/2000

xx = Front ring colour: black = 01, slate grey = 07, silver grey = 08

Pushbuttons with plastic front ring and white lens are also available with the following front ring colours: red = 03, yellow = 04, green = 05, blue = 06. Other colour combinations on request.

Order numbers **1.30.240.051/—08**, **1.30.240.061/—08** and **1.30.240.151/—08** (with silver grey plastic front ring) are **stock items**.

RAFIX 22 QR pushbutton, protruding lens, square collar



Illuminability	Colour of lens	Order no. momentary		Order no. latching	
		Plastic front ring	Metallized front ring	Plastic front ring	Metallized front ring
yes	transparent white	1.30.240.251/10xx	1.30.240.271/1000	1.30.240.261/10xx	1.30.240.281/1000
yes	transparent red	1.30.240.251/13xx	1.30.240.271/1300	1.30.240.261/13xx	1.30.240.281/1300
yes	transparent yellow	1.30.240.251/14xx	1.30.240.271/1400	1.30.240.261/14xx	1.30.240.281/1400
yes	transparent green	1.30.240.251/15xx	1.30.240.271/1500	1.30.240.261/15xx	1.30.240.281/1500
yes	transparent blue	1.30.240.251/16xx	1.30.240.271/1600	1.30.240.261/16xx	1.30.240.281/1600
no	opaque black	1.30.240.351/01xx	1.30.240.371/0100	1.30.240.361/01xx	1.30.240.381/0100
no	opaque white	1.30.240.351/02xx	1.30.240.371/0200	1.30.240.361/02xx	1.30.240.381/0200
no	opaque red	1.30.240.351/03xx	1.30.240.371/0300	1.30.240.361/03xx	1.30.240.381/0300
no	opaque yellow	1.30.240.351/04xx	1.30.240.371/0400	1.30.240.361/04xx	1.30.240.381/0400
no	opaque green	1.30.240.351/05xx	1.30.240.371/0500	1.30.240.361/05xx	1.30.240.381/0500
no	opaque blue	1.30.240.351/06xx	1.30.240.371/0600	1.30.240.361/06xx	1.30.240.381/0600
no	opaque slate-grey	1.30.240.351/07xx	1.30.240.371/0700	1.30.240.361/07xx	1.30.240.381/0700

2

RAFIX
22 QR

Technical data see page 2 - 102

Accessories:

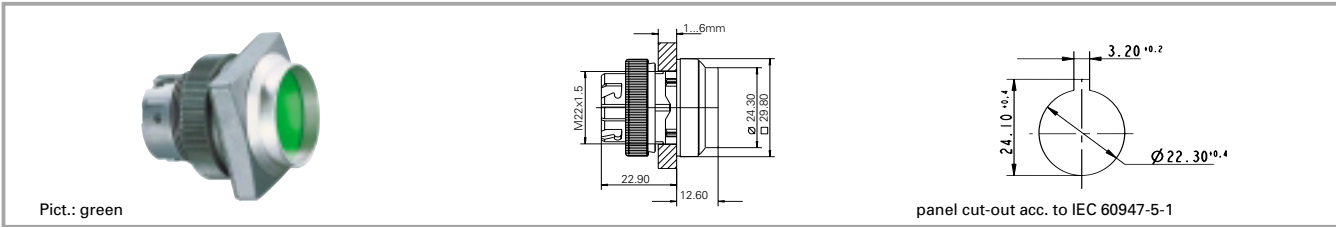
Legend insert without legend: **5.70.802.000/2000**

xx = Front ring colour: black = 01, slate grey = 07, silver grey = 08

Pushbuttons with plastic front ring and white lens are also available with the following front ring colours: red = 03, yellow = 04, green = 05, blue = 06. Other colour combinations on request.

Order numbers **1.30.240.251/—08** and **1.30.240.261/—08** (with silver grey plastic front ring) are **stock items**.

RAFIX 22 QR pushbutton, protruding front ring, square collar



Pict.: green

panel cut-out acc. to IEC 60947-5-1

2

RAFIX
22 QR

Illuminability	Colour of lens	Order no. momentary		Order no. latching	
		Plastic front ring	Metallized front ring	Plastic front ring	Metallized front ring
yes	transparent white	1.30.240.451/10xx	1.30.240.471/1000		
yes	transparent red	1.30.240.451/13xx	1.30.240.471/1300		
yes	transparent yellow	1.30.240.451/14xx	1.30.240.471/1400		
yes	transparent green	1.30.240.451/15xx	1.30.240.471/1500		
yes	transparent blue	1.30.240.451/16xx	1.30.240.471/1600		
no	opaque black	1.30.240.551/01xx	1.30.240.571/0100		
no	opaque white	1.30.240.551/02xx	1.30.240.571/0200		
no	opaque red	1.30.240.551/03xx	1.30.240.571/0300		
no	opaque yellow	1.30.240.551/04xx	1.30.240.571/0400		
no	opaque green	1.30.240.551/05xx	1.30.240.571/0500		
no	opaque blue	1.30.240.551/06xx	1.30.240.571/0600		
no	opaque slate-grey	1.30.240.551/07xx	1.30.240.571/0700		

Technical data see page 2 - 102

Accessories:

Legend insert without legend: 5.70.800.000/2000

xx = Front ring colour: black = 01, slate grey = 07, silver grey = 08

The protruding collar offers protection against inadvertent operation and thereby fulfils the safety requirements of various machinery manufacturers, particularly in the industry.

RAFIX 22 QR selector switch



2

General data

The illuminated selector switches are provided with translucent handle markings. These are opaque on the non-illuminated versions.

Technical data

General information

Form of handle	see order block
Colour of lens	white
Colour of front ring	see order block
Form of collar	see order block

Dimensions

Length of collar	see order block
Width of collar	see order block
Overall height	22.2 mm
Mounting depth with contact block without cable	56.4 mm
Mounting hole	22.3 mm
Key grid	50 x 30 mm
Diameter of collar	see order block

Mechanical design

Mounting	ring nut
Contact function	see order block
Illuminability	see order block
Rotating angle	see order block

Mechanical characteristics

Operating force max.	approx. 5 N for 1 switching element
Torque max.	2 Nm

Electrical characteristics

Protection class	II
------------------	----

Other specifications

Operating life	0.5 million
Degree of protection from front side	IP65
Ambient temp. operating min.	-27 °C
Ambient temp. operating max.	+70 °C
Storage temperature min.	-40 °C
Storage temperature max.	+80 °C
Resistance to constant environment	according to IEC 600 68-2-3 and 2-30
Resistance at variable environment	according to IEC 600 68-2-14 and 2-33

RAFIX
22 QR

Accessories RAFIX 22 QR selector switch

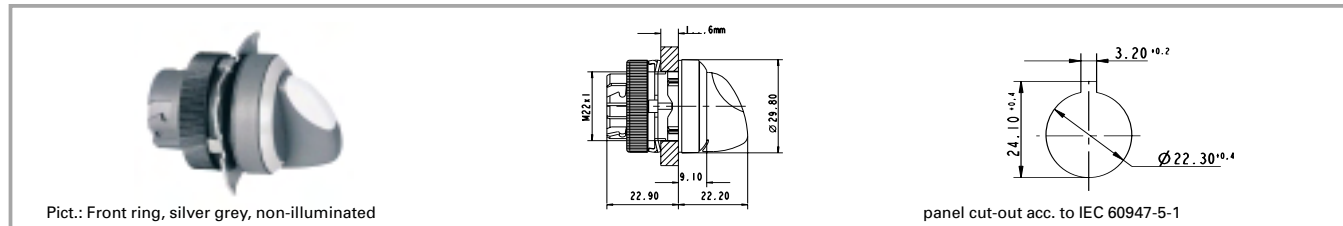
Description	Photo	Order no.	Page
RAFIX 22 QR contact block with silver contacts, with coupling, without lamp socket, screw terminals, 1 NC + 1		1.20.124.017/0000	2 - 140
RAFIX 22 QR contact block with silver contacts, with coupling and lamp socket, screw terminals, 1 NC + 1 NO		1.20.124.027/0000	2 - 141
RAFIX 22 QR contact block with gold contacts, with coupling and lamp socket, screw terminals, 1 NC + 1 NO, 1 NC + 1 NO		1.20.124.128/0000	2 - 145
Contact block with coupling, gold contacts, RJ 12 connector, 1 NC + 1 NO, white LED		1.20.128.013/0000	2 - 147

Accessories RAFX 22 QR selector switch

Description	Photo	Order no.	Page
Label holder, round collar, with adhesive tape and release liner on back		5.07.620.010/0000	2 - 157

For other contact blocks, refer to the chapter „Contact blocks“; for additional accessories, refer to „RAFIX 22 QR special accessories“.

RAFIX 22 QR selector switch, round collar, short handle



Pict.: Front ring, silver grey, non-illuminated

panel cut-out acc. to IEC 60947-5-1

Illuminability	Contact function	Rotating angle	Drehwinkel	Order no.	
				Plastic front ring	Metal front ring
yes	momentary	1 x 40°		1.30.242.001/22xx	1.30.242.002/2200
yes	momentary	2 x 40°		1.30.242.026/22xx	1.30.242.027/2200
yes	latching 1 x 90° and momentary 1 x 40°	1 x 90° and 1 x 40°		1.30.242.426/22xx	1.30.242.427/2200
yes	latching	1 x 90°, form L		1.30.242.101/22xx	1.30.242.102/2200
yes	latching	1 x 90°, form V		1.30.242.201/22xx	1.30.242.202/2200
yes	latching	2 x 60°		1.30.242.301/22xx	1.30.242.302/2200
yes	latching	2 x 90°		1.30.242.126/22xx	1.30.242.127/2200
no	momentary	1 x 40°		1.30.242.501/02xx	1.30.242.502/0200
no	momentary	2 x 40°		1.30.242.526/02xx	1.30.242.527/0200
no	latching 1 x 90° and momentary 1 x 40°	1 x 90° and 1 x 40°		1.30.242.926/02xx	1.30.242.927/0200
no	latching	1 x 90°, form L		1.30.242.601/02xx	1.30.242.602/0200
no	latching	1 x 90°, form V		1.30.242.701/02xx	1.30.242.702/0200
no	latching	2 x 60°		1.30.242.801/02xx	1.30.242.802/0200
no	latching	2 x 90°		1.30.242.626/02xx	1.30.242.627/0200

Technical data see page 2 - 110

xx = Front ring colour: black = 01, slate grey = 07, silver grey = 08; other colours on request.

Included: Ring nut with claw.

On keylock switches with 3 switching positions (e.g. 2 x 90 degrees), either the left-hand or right-hand contact block is activated, depending on the sense of rotation. A third contact block arranged in the centre would be actuated with either sense of rotation.

The following selector switches with silver grey plastic front ring are stock items:

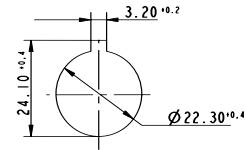
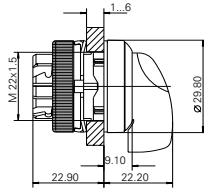
Illuminated: **1.30.252.001/2208, 1.30.252.026/2208, 1.30.252.101/2208, 1.30.252.201/2208, 1.30.252.301/2208**

Non-illuminated: **1.30.252.501/0208, 1.30.252.526/0208, 1.30.252.601/0208, 1.30.252.701/0208, 1.30.252.801/0208**

RAFIX 22 QR selector switch, round collar, long handle



Pict.: Front ring, metallized, illuminated



panel cut-out acc. to IEC 60947-5-1

2

RAFIX
22 QR

Illuminability	Contact function	Rotating angle	Drehwinkel	Order no.	
				Plastic front ring	Metal front ring
yes	momentary	1 x 40°		1.30.242.011/22xx	1.30.242.012/2200
yes	momentary	2 x 40°		1.30.242.036/22xx	1.30.242.037/2200
yes	latching 1 x 90° and momentary 1 x 40°	1 x 90° and 1 x 40°		1.30.242.436/22xx	1.30.242.437/2200
yes	latching	1 x 90°, form L		1.30.242.111/22xx	1.30.242.112/2200
yes	latching	1 x 90°, form V		1.30.242.211/22xx	1.30.242.212/2200
yes	latching	2 x 60°		1.30.242.311/22xx	1.30.242.312/2200
yes	latching	2 x 90°		1.30.242.136/22xx	1.30.242.137/2200
no	momentary	1 x 40°		1.30.242.511/02xx	1.30.242.512/0200
no	momentary	2 x 40°		1.30.242.536/02xx	1.30.242.537/0200
no	latching 1 x 90° and momentary 1 x 40°	1 x 90° and 1 x 40°		1.30.242.936/02xx	1.30.242.937/0200
no	latching	1 x 90°, form L		1.30.242.611/02xx	1.30.242.612/0200
no	latching	1 x 90°, form V		1.30.242.711/02xx	1.30.242.712/0200
no	latching	2 x 60°		1.30.242.811/02xx	1.30.242.812/0200
no	latching	2 x 90°		1.30.242.636/02xx	1.30.242.637/0200

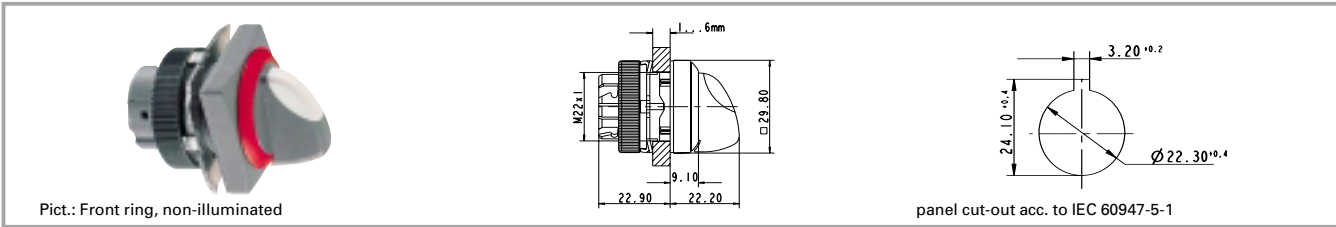
Technical data see page 2 - 110

xx = Front ring colour: black = 01, slate grey = 07, silver grey = 08; other colours on request.

Included: Ring nut with claw.

On selector switches with 3 switching positions (e.g. 2 x 90 degrees), either the left-hand or right-hand contact block is activated, depending on the sense of rotation. A third contact block arranged in the centre would be actuated with either sense of rotation.

RAFIX 22 QR selector switch, square collar, short handle



Pict.: Front ring, non-illuminated

panel cut-out acc. to IEC 60947-5-1

Illuminability	Contact function	Rotating angle	Drehwinkel	Order no.	
				Plastic front ring	Metal front ring
yes	momentary	1 x 40°		1.30.242.051/22xx	1.30.242.052/2200
yes	momentary	2 x 40°		1.30.242.076/22xx	1.30.242.077/2200
yes	latching 1 x 90° and momentary 1 x 40°	1 x 90° and 1 x 40°		1.30.242.476/22xx	1.30.242.477/2200
yes	latching	1 x 90°, form L		1.30.242.151/22xx	1.30.242.152/2200
yes	latching	1 x 90°, form V		1.30.242.251/22xx	1.30.242.252/2200
yes	latching	2 x 60°		1.30.242.351/22xx	1.30.242.352/2200
yes	latching	2 x 90°		1.30.242.176/22xx	1.30.242.177/2200
no	momentary	1 x 40°		1.30.242.551/02xx	1.30.242.552/0200
no	momentary	2 x 40°		1.30.242.576/02xx	1.30.242.577/0200
no	latching 1 x 90° and momentary 1 x 40°	1 x 90° and 1 x 40°		1.30.242.976/02xx	1.30.242.977/0200
no	latching	1 x 90°, form L		1.30.242.651/02xx	1.30.242.652/0200
no	latching	1 x 90°, form V		1.30.242.751/02xx	1.30.242.752/0200
no	latching	2 x 60°		1.30.242.851/02xx	1.30.242.852/0200
no	latching	2 x 90°		1.30.242.676/02xx	1.30.242.677/0200

2

RAFIX 22 QR

Technical data see page 2 - 110

xx = Front ring colour: black = 01, slate grey = 07, silver grey = 08; other colours on request.

Included: Ring nut with claw.

On selector switches with 3 switching positions (e.g. 2 x 90 degrees), either the left-hand or right-hand contact block is activated, depending on the sense of rotation.

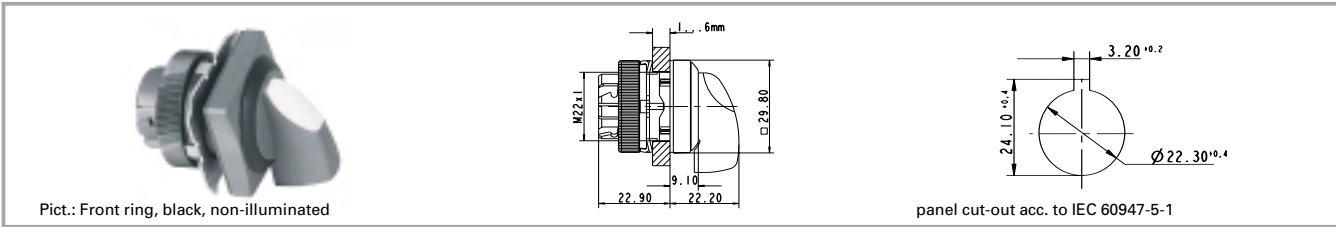
A third contact block arranged in the centre would be actuated with either sense of rotation.

The following selector switches with silver grey plastic front ring are stock items:

Illuminated: **1.30.242.051/2208, 1.30.242.076/2208, 1.30.242.151/2208, 1.30.242.251/2208, 1.30.242.351/2208**

Non-illuminated: **1.30.242.551/0208, 1.30.242.576/0208, 1.30.242.651/0208, 1.30.242.751/0208, 1.30.242.851/0208**

RAFIX 22 QR selector switch, square collar, long handle



Pict.: Front ring, black, non-illuminated

panel cut-out acc. to IEC 60947-5-1

2

RAFIX
22 QR

Illuminability	Contact function	Rotating angle	Drehwinkel	Order no.	
				Plastic front ring	Metal front ring
yes	momentary	1 x 40°		1.30.242.061/22xx	1.30.242.062/2200
yes	momentary	2 x 40°		1.30.242.086/22xx	1.30.242.087/2200
yes	latching 1 x 90° and momentary 1 x 40°	1 x 90° and 1 x 40°		1.30.242.486/22xx	1.30.242.487/2200
yes	latching	1 x 90°, form L		1.30.242.161/22xx	1.30.242.162/2200
yes	latching	1 x 90°, form V		1.30.242.261/22xx	1.30.242.262/2200
yes	latching	2 x 60°		1.30.242.361/22xx	1.30.242.362/2200
yes	latching	2 x 90°		1.30.242.186/22xx	1.30.242.187/2200
no	momentary	1 x 40°		1.30.242.561/02xx	1.30.242.562/0200
no	momentary	2 x 40°		1.30.242.586/02xx	1.30.242.587/0200
no	latching 1 x 90° and momentary 1 x 40°	1 x 90° and 1 x 40°		1.30.242.986/02xx	1.30.242.987/0200
no	latching	1 x 90°, form L		1.30.242.661/02xx	1.30.242.662/0200
no	latching	1 x 90°, form V		1.30.242.761/02xx	1.30.242.762/0200
no	latching	2 x 60°		1.30.242.861/02xx	1.30.242.862/0200
no	latching	2 x 90°		1.30.242.686/02xx	1.30.242.687/0200

Technical data see page 2 - 110

xx = Front ring colour: black = 01, slate grey = 07, silver grey = 08; other colours on request.

Included: Ring nut with claw.

On selector switches with 3 switching positions (e.g. 2 x 90 degrees), either the left-hand or right-hand contact block is activated, depending on the sense of rotation. A third contact block arranged in the centre would be actuated with either sense of rotation.

RAFIX 22 QR keylock switch



2

Technical data

General information

Form of lens	see order block
Colour of front ring	see order block
Form of collar	see order block

Dimensions

Length of collar	see order block
Width of collar	see order block
Overall height	30.6 mm
Mounting depth with contact block without cable	56.4 mm
Mounting hole	22.3 mm
Key grid	50 x 30 mm
Diameter of collar	see order block

Mechanical design

Mounting	ring nut
Contact function	see order block
Illuminability	no
Lock	Ronis
Wafers	4
Lock type	455
Main key	no
Symmetric key	no
Rotating angle	see order block
Key removal position	see order block

Mechanical characteristics

Operating force max.	approx. 5 N for 1 switching element
Torque max.	2 Nm

Electrical characteristics

Protection class	II
------------------	----

Other specifications

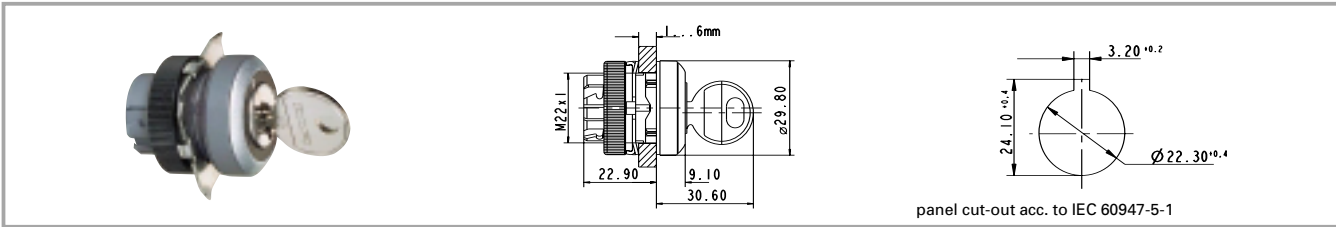
Operating life	0.3 million momentary / 50000 latching
Degree of protection from front side	IP65
Ambient temp. operating min.	-25 °
Ambient temp. operating max.	+70 °
Storage temperature min.	-40 °C
Storage temperature max.	+80 °C
Resistance to constant environment	according to IEC 600 68-2-3 and 2-30
Resistance at variable environment	according to IEC 600 68-2-14 and 2-33

RAFIX 22 QR

Accessories RAFX 22 QR keylock switch

Description	Photo	Order no.	Page
RAFIX 22 QR contact block with silver contacts, with coupling, without lamp socket, screw terminals, 1 NC + 1		1.20.124.017/0000	2 - 140
RAFIX 22 QR contact block with silver contacts, with coupling, without lamp socket, cage clamp terminals, 1		1.20.125.002/0000	2 - 140
Contact block with coupling, gold contacts, RJ 12 connector, 1 NC + 1 NO, without LED		1.20.128.003/0000	2 - 147
Label holder, round collar, with adhesive tape and release liner on back		5.07.620.010/0000	2 - 157
Spare key for RAFX 22 QR		5.58.017.001/0000	

RAFIX 22 QR keylock switch, round collar



Contact function	Rotating angle	Key removal position	Rotating angle	Order no.	
				Plastic front ring	Metal front ring
momentary	1 x 40°	0		1.30.245.001/xxxx	1.30.245.002/0000
momentary	2 x 40°	0		1.30.245.101/xxxx	1.30.245.102/0000
latching 1 x 90° and momentary 1 x 40°	1 x 90° and 1 x 40°	0		1.30.245.501/xxxx	1.30.245.502/0000
latching 1 x 90° and momentary 1 x 40°	1 x 90° and 1 x 40°	0+2		1.30.245.521/xxxx	1.30.245.522/0000
latching	1 x 90°, form L	0		1.30.245.201/xxxx	1.30.245.202/0000
latching	1 x 90°, form L	0+1		1.30.245.221/xxxx	1.30.245.222/0000
latching	1 x 90°, form V	0		1.30.245.301/xxxx	1.30.245.302/0000
latching	1 x 90°, form V	0+1		1.30.245.321/xxxx	1.30.245.322/0000
latching	2 x 60°	0+1+2		1.30.245.731/xxxx	1.30.245.732/0000
latching	2 x 90°	0		1.30.245.401/xxxx	1.30.245.402/0000
latching	2 x 90°	0+1+2		1.30.245.431/xxxx	1.30.245.432/0000

2

RAFIX
22 QR

Technical data see page 2 - 116

xxxx = Front ring colour: black = 0100, slate grey = 0700, silver grey = 0800.

Other versions on request.

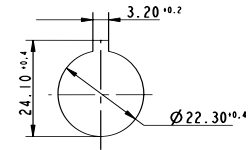
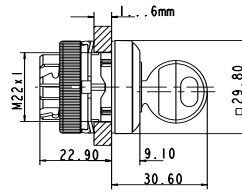
Included: Ring nut with claw.

On selector switches with 3 switching positions (e.g. 2 x 90 degrees), either the left-hand or right-hand contact block is activated, depending on the sense of rotation. A third contact block arranged in the centre would be actuated with either sense of rotation.

The following keylock switches with silver grey plastic front ring are stock items:

1.30.245.001/0800, 1.30.245.201/0800, 1.30.245.221/0800, 1.30.245.301/0800, 1.30.245.321/0800, 1.30.245.731/0800

RAFIX 22 QR keylock switch, square collar



panel cut-out acc. to IEC 60947-5-1

2

RAFIX
22 QR

Contact function	Rotating angle	Key removal position	Rotating angle	Order no.	
				Plastic front ring	Metal front ring
momentary	1 x 40°	0		1.30.245.051/xxxx	1.30.245.052/0000
momentary	2 x 40°	0		1.30.245.151/xxxx	1.30.245.152/0000
latching 1 x 90° and momentary 1 x 40°	1 x 90° and 1 x 40°	0		1.30.245.551/xxxx	1.30.245.552/0000
latching 1 x 90° and momentary 1 x 40°	1 x 90° and 1 x 40°	0+2		1.30.245.571/xxxx	1.30.245.572/0000
latching	1 x 90°, form L	0		1.30.245.251/xxxx	1.30.245.252/0000
latching	1 x 90°, form L	0+1		1.30.245.271/xxxx	1.30.245.272/0000
latching	1 x 90°, form V	0		1.30.245.351/xxxx	1.30.245.352/0000
latching	1 x 90°, form V	0+1		1.30.245.371/xxxx	1.30.245.372/0000
latching	2 x 60°	0+1+2		1.30.245.781/xxxx	1.30.245.782/0000
latching	2 x 90°	0		1.30.245.451/xxxx	1.30.245.452/0000
latching	2 x 90°	0+1+2		1.30.245.481/xxxx	1.30.245.482/0000

Technical data see page 2 - 116

xxxx = Front ring colour: black = 0100, slate grey = 0700, silver grey = 0800.

Other versions on request.

Included: Ring nut with claw.

On keylock switches with 3 switching positions (e.g. 2 x 90 degrees), either the left-hand or right-hand contact block is activated, depending on the sense of rotation. A third contact block arranged in the centre would be actuated with either sense of rotation.

The following keylock switches with silver grey plastic front ring are stock items:

1.30.245.051/0800, 1.30.245.251/0800, 1.30.245.271/0800, 1.30.245.351/0800, 1.30.245.371/0800, 1.30.245.781/0800

RAFIX 22 QR mushroom-headed pushbutton



Pict.: Front ring, metallized

Front ring, slate grey

panel cut-out acc. to IEC 60947-5-1

2

Technical data

General information

Form of lens	mushroom formed
Colour of mushroom	see order block
Colour of front ring	see order block
Form of collar	see order block

Dimensions

Length of collar	see order block
Width of collar	see order block
Overall height	20.10 mm
Mounting depth	56.4 mm
Mounting hole	22.3 mm
Key grid	50 x 30 mm
Diameter of collar	see order block

Mechanical design

Mounting	ring nut
Contact function	see order block
Illuminability	see order block

Mechanical characteristics

Operating force max.	approx. 5 N for 1 switching element
Robustness min.	100 N

Electrical characteristics

Protection class	II
------------------	----

Other specifications

Operating life	1000000
Degree of protection from front side	IP65
Storage temperature min.	-40 °C
Storage temperature max.	80 °C
Resistance to constant environment	according to IEC 600 68-2-3 and 2-30
Resistance at variable environment	according to IEC 600 68-2-14 and 2-33

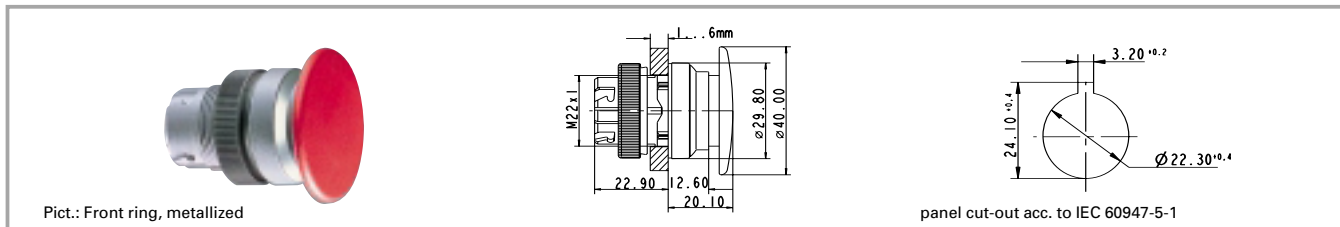
RAFIX
22 QR

Accessories RAFIX 22 QR mushroom-headed pushbutton

Description	Photo	Order no.	Page
RAFIX 22 QR contact block with silver contacts, with coupling, without lamp socket, screw terminals, 1 NC + 1		1.20.124.017/0000	2 - 140
RAFIX 22 QR contact block with gold contacts, with coupling, without lamp socket, cage clamp terminals, 1		1.20.125.102/0000	2 - 144
Contact block with coupling, gold contacts, RJ 12 connector, 1 NO, without LED		1.20.128.002/0000	2 - 147
Fixing spanner for ring nut and front ring		5.05.800.062/0000	5 - 25

For other contact blocks, refer to the chapter „Contact blocks“; for additional accessories, refer to „RAFIX 22 QR special accessories“.

RAFIX 22 QR mushroom-headed pushbutton 40 mm, round collar



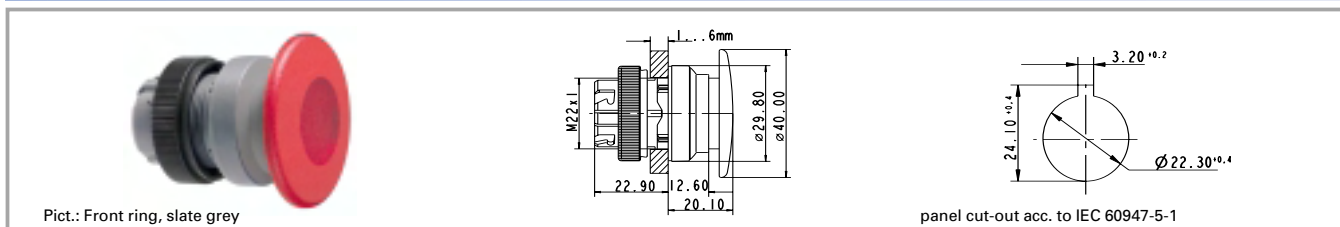
Illuminability	Colour of mushroom	Order no. momentary		Order no. latching	
		Plastic front ring	Metallized front ring	Plastic front ring	Metallized front ring
no	opaque black	1.30.246.501/01xx	1.30.246.502/0100	1.30.246.511/01xx	1.30.246.512/0100
no	opaque red	1.30.246.501/03xx	1.30.246.502/0300	1.30.246.511/03xx	1.30.246.512/0300

Technical data see page 2 - 120

xx = Front ring colour: black = 01, slate grey = 07, silver grey = 08
 Order number **1.30.246.501/0308** (with silver grey plastic front ring) is a **stock item**.

2

RAFIX 22 QR mushroom-headed pushbutton 40 mm, illuminated, round collar



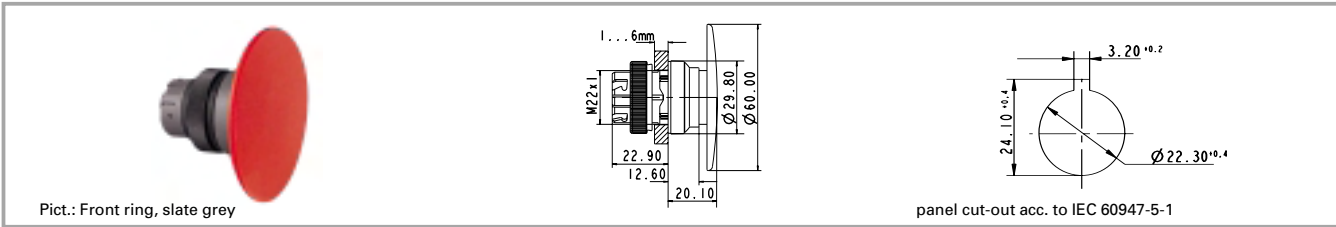
Illuminability	Colour of mushroom	Order no. momentary		Order no. latching	
		Plastic front ring	Metallized front ring	Plastic front ring	Metallized front ring
yes	opaque red/ transparent red	1.30.246.001/03xx	1.30.246.002/0300	1.30.246.011/03xx	1.30.246.012/0300

Technical data see page 2 - 120

xx = Front ring colour: black = 01, slate grey = 07, silver grey = 08
 Order number **1.30.246.001/0308** (with silver grey plastic front ring) is a **stock item**.

RAFIX
22 QR

RAFIX 22 QR mushroom-headed pushbutton 60 mm, round collar



Pict.: Front ring, slate grey

panel cut-out acc. to IEC 60947-5-1

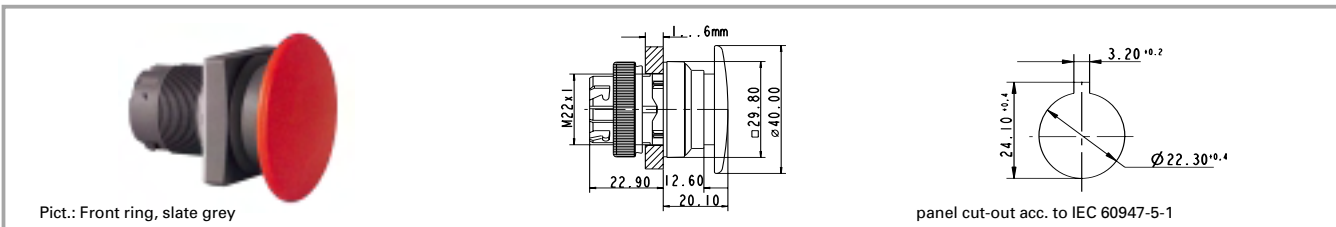
2

Illuminability	Colour of mushroom	Order no. momentary		Order no. latching	
		Plastic front ring	Metallized front ring	Plastic front ring	Metallized front ring
no	opaque red	1.30.246.601/03xx	1.30.246.602/0300		

Technical data see page 2 - 120

xx = Front ring colour: black = 01, slate grey = 07, silver grey = 08

RAFIX 22 QR mushroom-headed pushbutton 40 mm, square collar



Pict.: Front ring, slate grey

panel cut-out acc. to IEC 60947-5-1

RAFIX
22 QR

Illuminability	Colour of mushroom	Order no. momentary		Order no. latching	
		Plastic front ring	Metallized front ring	Plastic front ring	Metallized front ring
no	opaque black	1.30.246.551/01xx	1.30.246.552/0100	1.30.246.561/01xx	1.30.246.562/0100
no	opaque red	1.30.246.551/03xx	1.30.246.552/0300	1.30.246.561/03xx	1.30.246.562/0300

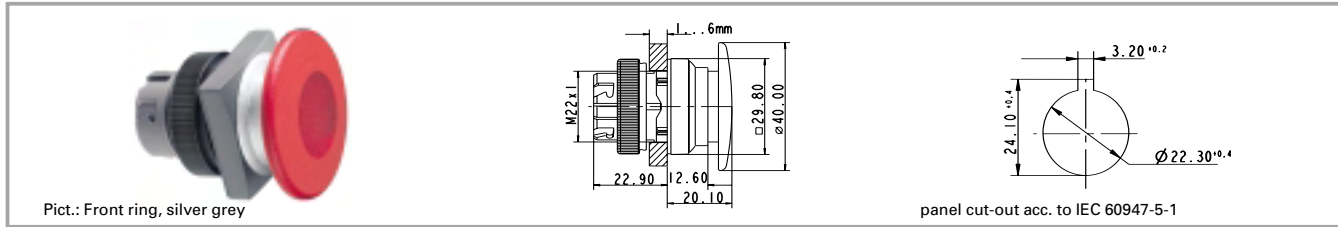
Technical data see page 2 - 120

xx = Front ring colour: black = 01, slate grey = 07, silver grey = 08

Order number **1.30.246.551/0308** (with silver grey plastic front ring) is a **stock item**.

RAFIX 22 QR

RAFIX 22 QR mushroom-headed pushbutton 40 mm, illuminated, square collar



Illuminability	Colour of mushroom	Order no. momentary		Order no. latching	
		Plastic front ring	Metallized front ring	Plastic front ring	Metallized front ring
yes	opaque red/ transparent red	1.30.246.051/03xx	1.30.246.052/0300	1.30.246.061/03xx	1.30.246.062/0300

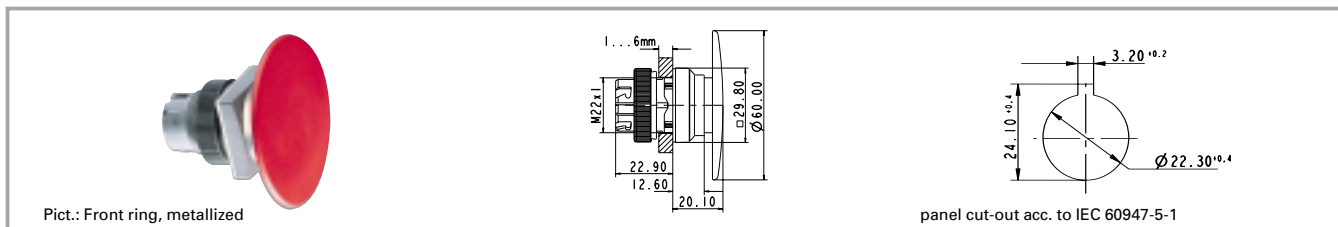
Technical data see page 2 - 120

xx = Front ring colour: black = 01, slate grey = 07, silver grey = 08

Order number **1.30.246.051/0308** (with silver grey plastic front ring) is a **stock item**.

2

RAFIX 22 QR mushroom-headed pushbutton 60 mm, square collar



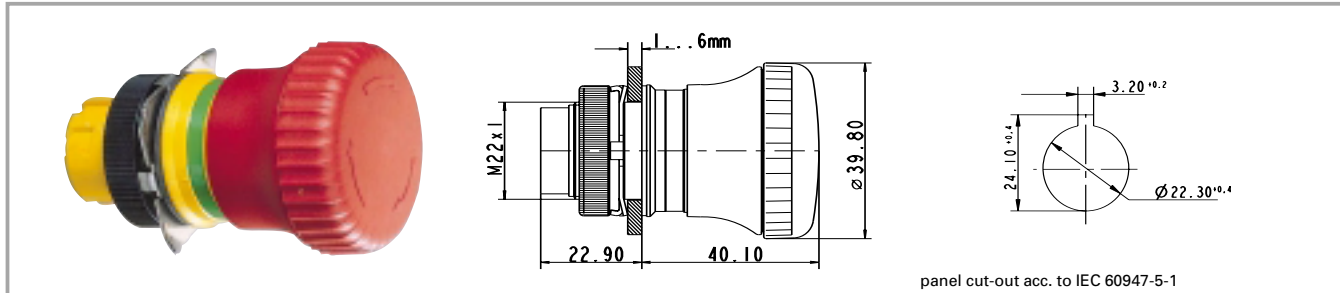
Illuminability	Colour of mushroom	Order no. momentary		Order no. latching	
		Plastic front ring	Metallized front ring	Plastic front ring	Metallized front ring
no	opaque red	1.30.246.651/03xx	1.30.246.652/0300		

Technical data see page 2 - 120

xx = Front ring colour: black = 01, slate grey = 07, silver grey = 08

RAFIX
22 QR

RAFIX 22 QR emergency stop pushbutton, dupe-proof to EN 418



2

General data

The emergency stop pushbuttons comply with IEC 60 204, IEC 60 073, IEC 60 947 and VDE 0113 Part 1. They are designed dupe-proof according to EN 418 with a positive mechanical movement sequence. A certain operating force must be exerted at the action point in order to prevent inadvertent operation. The pushbutton latches when pressed and is reset by either turning the actuator in a clockwise direction or pulling the actuator back to the original position. The reset means depends on the model. The special shape of the actuator prevents the emergency stop pushbutton from being blocked. This means that the emergency stop process - once initiated - cannot be impeded by any jamming objects. Only use contact block 1.20.126.4xx.

Technical data

General information

Form of lens mushroom formed
 Colour of lens see order block
 Form of collar round

Dimensions

Overall height see order block
 Mounting depth with contact block without cable 56.4 mm
 Mounting hole 22.3 mm
 Key grid 50 x 30 mm
 Diameter of collar 39.8 mm

Mechanical design

Mounting ring nut
 Contact function latching
 Illuminability see order block

Mechanical characteristics

Operating force max. approx. 5 N for 1 switching element

Robustness min. 100 N
 Robustness acc. IEC 60947-5-5

Other specifications

Operating life see order block
 Degree of protection from front side IP65
 Ambient temp. operating min. -25 °C
 Ambient temp. operating max. +70 °C
 Storage temperature min. -40 °C
 Storage temperature max. +80 °C
 Resistance to constant environment according to IEC 600 68-2-3 and 2-30
 Resistance at variable environment according to IEC 600 68-2-14 and 2-33

RAFIX
22 QR

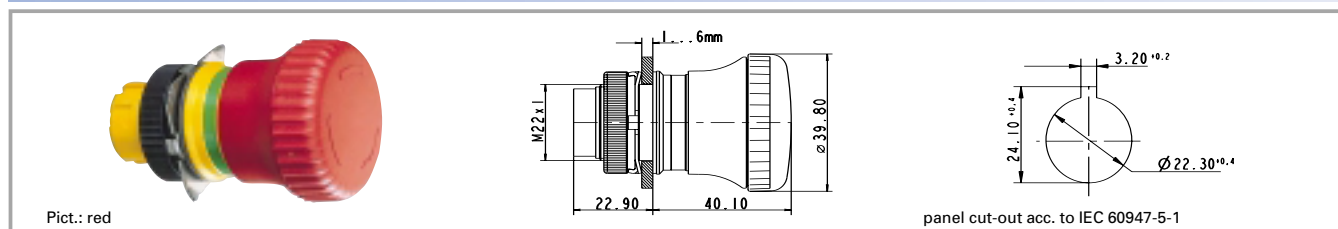
Accessories RAFIX 22 QR emergency stop pushbutton, dupe-proof to EN 418

Description	Photo	Order no.	Page
RAFIX 22 QR contact block with silver contacts, with coupling, without lamp socket, screw terminals, 1 NC		1.20.124.001/0000	2 - 140
RAFIX 22 QR contact block with silver contacts, with coupling, without lamp socket, screw terminals, 2 NC		1.20.124.019/0000	2 - 140
Contact block with coupling, gold contacts, RJ 12 connector, 1 NC, without LED		1.20.128.001/0000	2 - 147
Fixing spanner for ring nut and front ring		5.05.800.062/0000	5 - 25
Emergency stop label, yellow, round 60 mm, PVC adhesive, without legend		5.76.204.100/0400	2 - 161

Accessories RAFX 22 QR emergency stop pushbutton, dupe-proof to EN 418

Description	Photo	Order no.	Page
Emergency stop label, yellow, round 60 mm, PVC adhesive, with legend "NOT-AUS"		5.76.204.101/0400	2 - 161
Emergency stop label, yellow, round 60 mm, PVC adhesive, with legend "ARRET D'URGENCE"		5.76.204.102/0400	2 - 161
Emergency stop label, yellow, round 60 mm, PVC adhesive, with legend "EMERGENCY-STOP"		5.76.204.103/0400	2 - 161
Emergency stop label, yellow 36 x 64 mm, PVC adhesive, without legend		5.76.205.011/0400	2 - 161
Emergency stop label, yellow, round 60 mm, rigid PVC, with legend "EMERGENCY-STOP/ARRET D'URGENCE"		5.76.207.002/0400	2 - 161

For other contact blocks, refer to the chapter „Contact blocks“; for additional accessories, refer to „RAFIX 22 QR special accessories“.

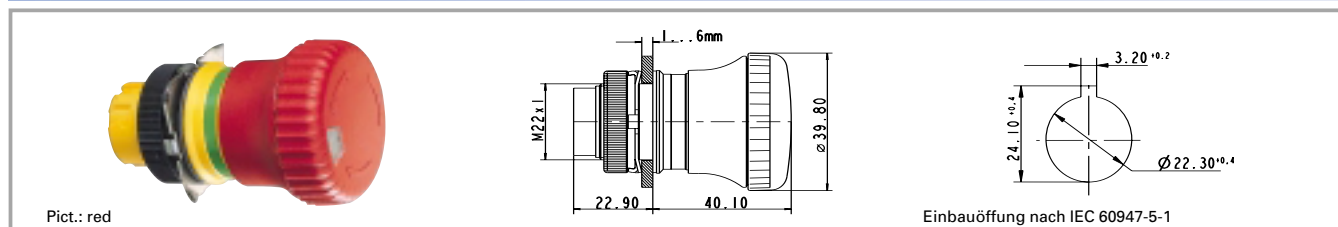
RAFIX 22 QR emergency stop pushbutton, dupe-proof to EN 418


Form of lens	Colour of lens	Illuminability	Operating life	Order no. complete
mushroom formed Twist to Reset	opaque red	no	100000	1.30.243.501/0300
mushroom formed Pull to Reset	opaque red	no	100000	1.30.243.901/0300

Technical data see page 2 - 124

Included: Ring nut with claw.

Switching position indication: In the non-operated condition, a green ring is visible on the side.

RAFIX 22 QR emergency stop pushbutton, dupe-proof to EN 418, with indication to EN 60947-1


Form of lens	Colour of lens	Illuminability	Operating life	Order no. complete
mushroom formed Twist to Reset	opaque red	no	100000	1.30.243.601/0300

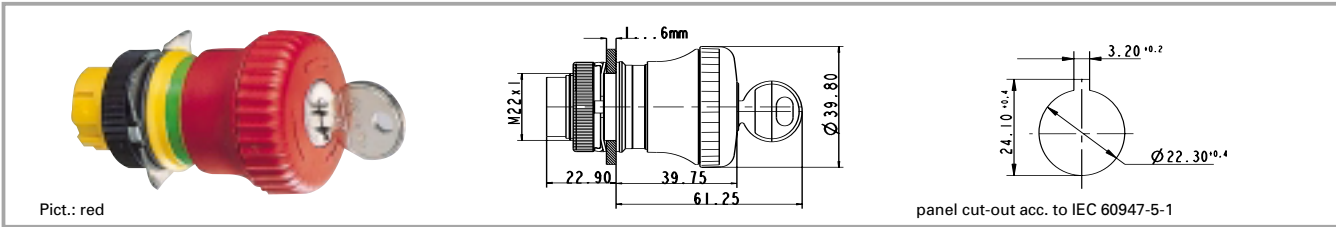
Technical data see page 2 - 124

Included: Ring nut with claw.

Switching position indication: In the non-operated condition, a green ring is visible on the side.

This switching position is visible in addition from the front; a mechanical indicator integrated into the mushroom head changes from green to red when actuated.

RAFIX 22 QR emergency stop pushbutton, dupe-proof to EN 418, with keylock



Form of lens	Colour of lens	Illuminability	Operating life	Order no. complete
mushroom formed Twist to Reset	opaque red	no	50000	1.30.243.701/0300

2

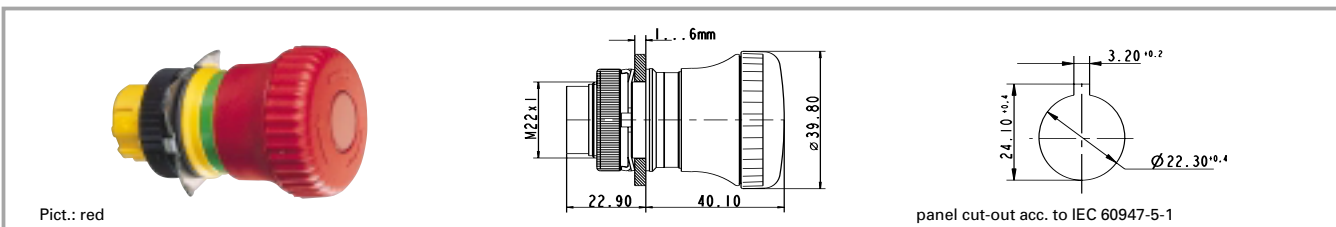
Technical data see page 2 - 124

Included: Ring nut with claw, 2 keys.

Switching position indication: In the non-operated condition, a green ring is visible on the side.

Once actuated, the emergency stop pushbutton can only be reset with the key.

RAFIX 22 QR emergency stop pushbutton, dupe-proof to EN 418, illuminated



Form of lens	Colour of lens	Illuminability	Operating life	Order no. complete
mushroom formed Twist to Reset	opaque red/ translucent red	yes	100000	1.30.243.001/0300

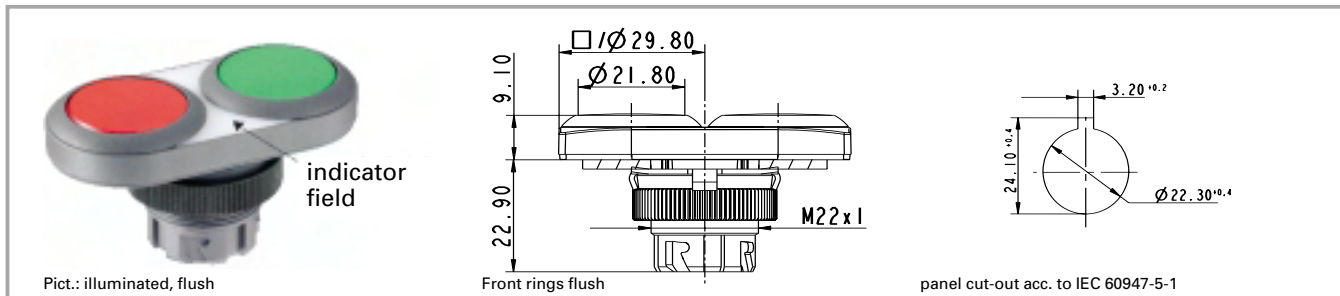
Technical data see page 2 - 124

Included: Ring nut with claw.

Switching position indication: In the non-operated condition, a green ring is visible on the side.

RAFIX
22 QR

RAFIX 22 QR twin pushbutton



2

General data

Lens legends are oriented for vertical installation of the twin pushbutton. Only the signal indicator is illuminated on twin pushbuttons prepared for illumination. This area is opaque slate grey on versions which cannot be illuminated.

Technical data

General information

Front ring form/Legending	see order block
Colour of lens	opaque green/opaque red
Colour of front ring	see order block
Form of collar	see order block

Dimensions

Length of collar	59.6 mm
Width of collar	29.8 mm
Overall height	9.1 mm
Mounting depth with contact block without cable	56.4 mm
Mounting hole	22.3 mm
Key grid	50 x 30 mm

Mechanical design

Mounting	ring nut
Contact function	momentary
Illuminability	see order block

Mechanical characteristics

Operating force max.	approx. 5 N for 1 switching element
Robustness min.	100 N

Other specifications

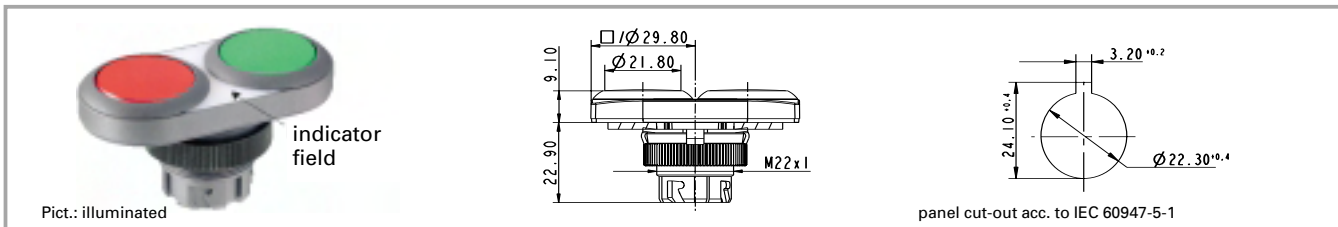
Degree of protection from front side	IP65
Ambient temp. operating min.	-25 °C
Ambient temp. operating max.	+70 °C
Storage temperature max.	+80 °C
Resistance to constant environment	according to IEC 600 68-2-3 and 2-30
Resistance at variable environment	according to IEC 600 68-2-14 and 2-33

RAFIX
22 QR

Accessories RAFIX 22 QR twin pushbutton

Description	Photo	Order no.	Page
RAFIX 22 QR contact block with silver contacts, with coupling and lamp socket, screw terminals, 1 NO, 1 NC		1.20.124.025/0000	2 - 141
RAFIX 22 QR contact block with gold contacts, with coupling and lamp socket, cage clamp terminals, 1 NO, 1		1.20.125.125/0000	2 - 145
Fixing spanner for ring nut and front ring		5.05.800.062/0000	5 - 25

RAFIX 22 QR twin pushbutton, oval collar



Illuminability	Colour of lens	Front ring form/Legending	Order no.	
			Plastic front ring	Metal front ring
yes	opaque green/opaque red	flush/ none	1.30.241.001/22xx	1.30.241.021/2200
yes	opaque green/opaque red	flush/red 0; green I	1.30.241.002/22xx	1.30.241.022/2200
yes	opaque green/opaque red	protruding/none	1.30.241.401/22xx	1.30.241.421/2200
no	opaque green/opaque red	flush/ none	1.30.241.101/07xx	1.30.241.121/0700
no	opaque green/opaque red	flush/red 0; green I	1.30.241.102/07xx	1.30.241.122/0700
no	opaque green/opaque red	protruding/none	1.30.241.501/07xx	1.30.241.521/0700

Technical data see page 2 - 128

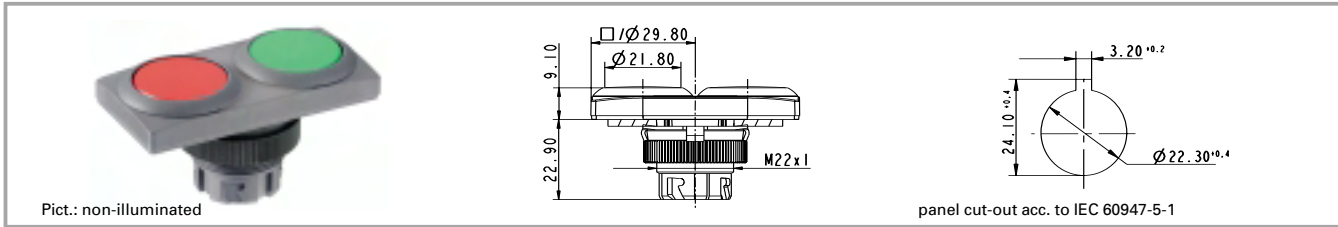
xx = Front ring colour: black = 01, slate grey = 07, silver grey = 08

Either the left-hand or right-hand contact block is actuated, depending on the button pressed. A third contact block arranged in the centre would be actuated by either button.

2

RAFIX
22 QR

RAFIX 22 QR twin pushbutton, rectangular collar



Pict.: non-illuminated

panel cut-out acc. to IEC 60947-5-1

2

Illuminability	Colour of lens	Front ring form/Legending	Order no.	
			Plastic front ring	Metal front ring
yes	opaque green/opaque red	flush/ none	1.30.241.051/22xx	1.30.241.071/2200
yes	opaque green/opaque red	flush/red 0; green I	1.30.241.052/22xx	1.30.241.072/2200
yes	opaque green/opaque red	protruding/none	1.30.241.451/22xx	1.30.241.471/2200
no	opaque green/opaque red	flush/ none	1.30.241.151/07xx	1.30.241.171/0700
no	opaque green/opaque red	flush/red 0; green I	1.30.241.152/07xx	1.30.241.172/0700
no	opaque green/opaque red	protruding/none	1.30.241.551/07xx	1.30.241.571/0700

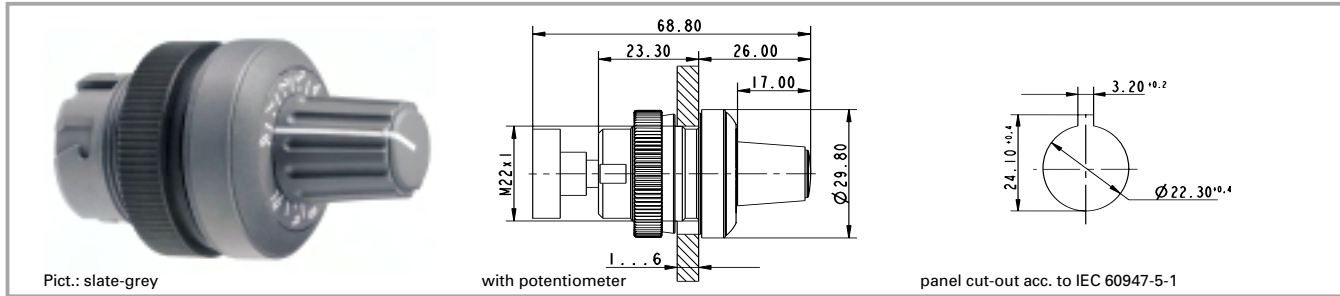
RAFIX
22 QR

Technical data see page 2 - 128

xx = Front ring colour: black = 01, slate grey = 07, silver grey = 08

Either the left-hand or right-hand contact block is actuated, depending on the button pressed. A third contact block arranged in the centre would be actuated by either button.

RAFIX 22 QR potentiometer drive



2

Technical data

General information

Form of lens	knob size
Colour of handle	see order block
Front ring	see order block
Form of collar	see order block

Dimensions

Length of collar	see order block
Width of collar	see order block
Overall height	26 mm
Mounting depth	according to potentiometer
Mounting hole	22.3 mm
Key grid	50 x 30 mm
Diameter of collar	see order block

Mechanical design

Mounting	ring nut
----------	----------

Mechanical characteristics

Robustness min.	100 N
-----------------	-------

Other specifications

Degree of protection from front side	IP65
Storage temperature min.	-40 °C
Storage temperature max.	+80 °C
Resistance to constant environment	according to IEC 600 68-2-3 and 2-30
Resistance at variable environment	according to IEC 600 68-2-14 and 2-33

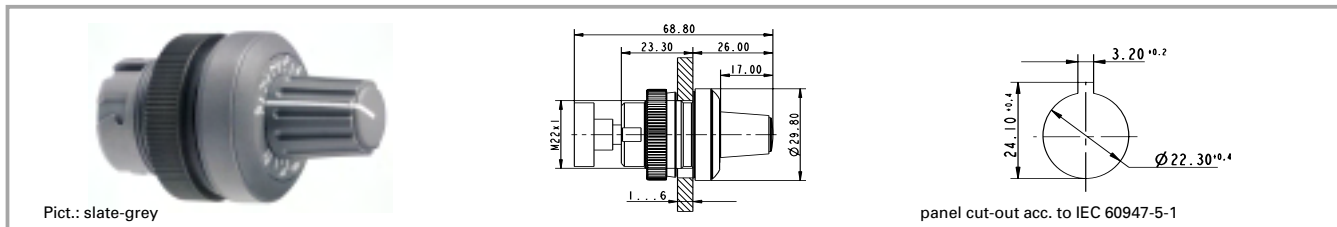
RAFIX
22 QR

Accessories RAFX 22 QR potentiometer drive

Description	Photo	Order no.	Page
Fixing spanner for ring nut and front ring		5.05.800.062/0000	5 - 25

RAFIX 22 QR

RAFIX 22 QR potentiometer drive, round collar



Front ring	Colour of handle	Order no. complete
metal	opaque slate-grey	1.30.248.051/0000
plastic slate-grey	opaque slate-grey	1.30.248.001/0700
plastic silber	opaque slate-grey	1.30.248.001/0800
metal	opaque black	1.30.248.061/0000
plastic slate-grey	opaque black	1.30.248.011/0700
plastic silber	opaque black	1.30.248.011/0800

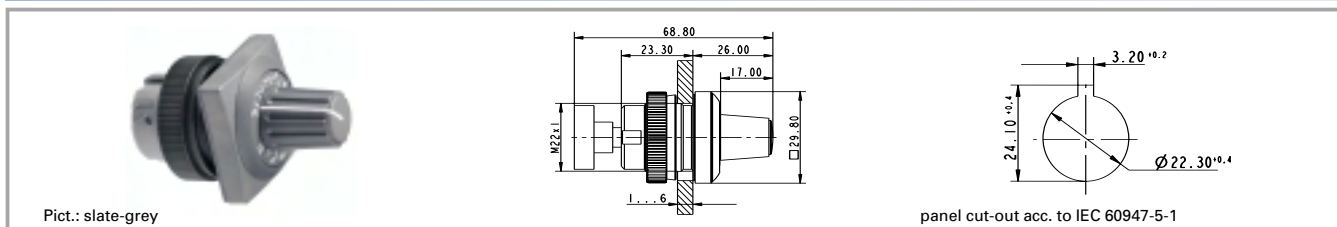
Technical data see page 2 - 132

For potentiometers with 6 mm shaft diameter. For potentiometers with 50 mm shaft length. Potentiometer not included.

RAFIX
22 QR

2

RAFIX 22 QR potentiometer drive, square collar

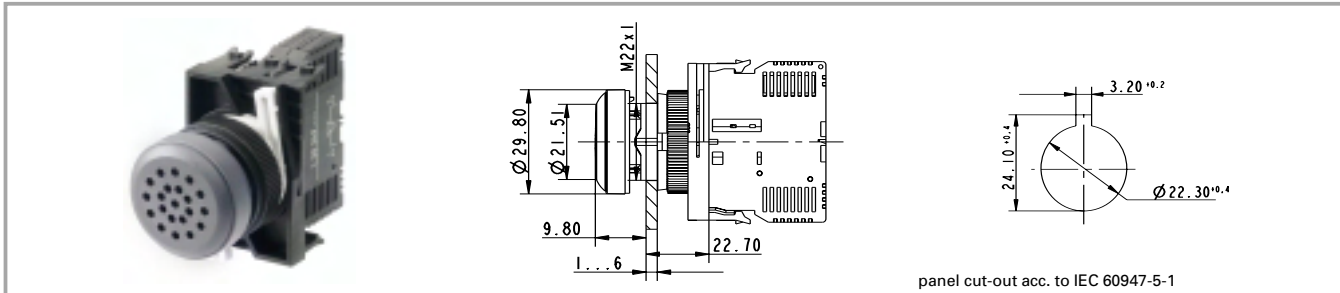


Front ring	Colour of handle	Order no. complete
metal	opaque slate-grey	1.30.248.071/0000
plastic slate-grey	opaque slate-grey	1.30.248.021/0700
plastic silber	opaque slate-grey	1.30.248.021/0800
metal	opaque black	1.30.248.081/0000
plastic slate-grey	opaque black	1.30.248.031/0700
plastic silber	opaque black	1.30.248.031/0800

Technical data see page 2 - 132

For potentiometers with 6 mm shaft diameter. For potentiometers with 50 mm shaft length. Potentiometer not included.

RAFIX 22 QR buzzer



2

Technical data

General information

Form of lens	flat lens
Colour of lens	opaque slate-grey
Form of collar	see order block
Sound	see order block

Dimensions

Length of collar	see order block
Width of collar	see order block
Overall height	9.8 mm
Mounting depth	56.4 mm
Mounting hole	22.3 mm
Key grid	50 x 30 mm
Diameter of collar	see order block

Mechanical design

Mounting	ring nut
----------	----------

Acoustic characteristics

Sonic pressure, 1 m distance min.	see order block
-----------------------------------	-----------------

Electrical characteristics

Operating voltage DC	see order block
Input current	see order block
Sound frequency	see order block

Mechanical characteristics

Robustness min.	100 N
-----------------	-------

Other specifications

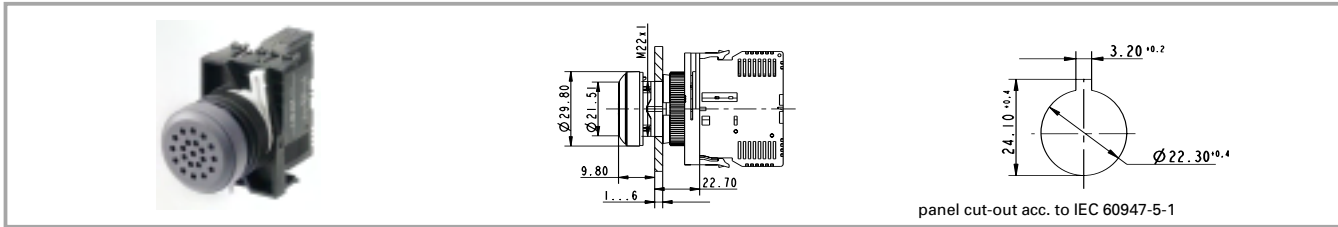
Degree of protection from front side	IP65
Storage temperature min.	-40 °C
Storage temperature max.	+80 °C
Resistance to constant environment	according to IEC 600 68-2-3 and 2-30
Resistance at variable environment	according to IEC 600 68-2-14 and 2-33

RAFIX
22 QR

Accessories RAFX 22 QR buzzer

Description	Photo	Order no.	Page
Fixing spanner for ring nut and front ring		5.05.800.062/0000	5 - 25

RAFIX 22 QR buzzer, round collar

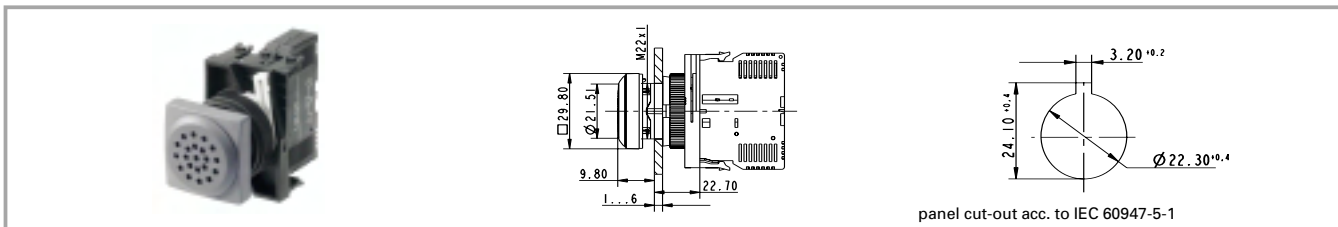


Operating voltage DC	Input current	Sound	Sonic pressure, 1 m distance min.	Sound frequency	Order no. complete
12 V	25 mA	continuous beep	70 dB		1.30.249.002/0000
24 V	25 mA	continuous beep	70 dB		1.30.249.001/0000

2

Technical data see page 2 - 134

RAFIX 22 QR buzzer, square collar



Operating voltage DC	Input current	Sound	Sonic pressure, 1 m distance min.	Sound frequency	Order no. complete
12 V	25 mA	continuous beep	70 dB		1.30.249.022/0000
24 V	25 mA	continuous beep	70 dB		1.30.249.021/0000

RAFIX
22 QR

Technical data see page 2 - 134

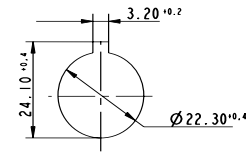
RAFIX 22 QR signal indicator



Pict.: yellow



red



panel cut-out acc. to IEC 60947-5-1

2

Technical data

General information

Form of lens	flat lens
Colour of lens	see order block
Form of collar	see order block

Dimensions

Length of collar	see order block
Width of collar	see order block
Overall height	9.4 mm
Mounting depth	56.4 mm
Mounting hole	22.3 mm
Key grid	50 x 30 mm
Diameter of collar	see order block

Mechanical design

Mounting	ring nut
Illuminability	yes

Electrical characteristics

Protection class	II
------------------	----

Other specifications

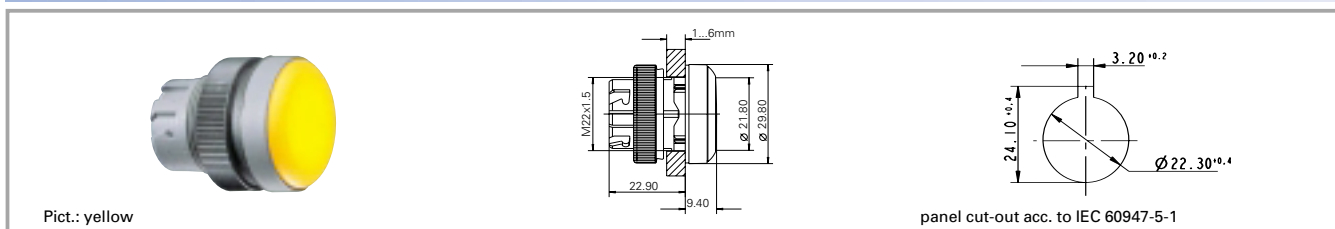
Degree of protection from front side	IP65
Ambient temp. operating min.	-25 °C
Ambient temp. operating max.	+70 °C
Storage temperature min.	-40 °C
Storage temperature max.	+80 °C
Resistance to constant environment	according to IEC 600 68-2-3 and 2-30
Resistance at variable environment	according to IEC 600 68-2-14 and 2-33

RAFIX
22 QR

Accessories RAFIX 22 QR signal indicator

Description	Photo	Order no.	Page
RAFIX 22 QR lamp socket assembly, screw terminals, with coupling		1.71.213.001/0000	2 - 150
RAFIX 22 QR lamp socket assembly, screw terminals, with coupling, diode and series resistor 130 V		1.71.213.004/0000	2 - 150
RAFIX 22 QR lamp socket assembly, cage clamp terminals, with coupling		1.71.214.001/0000	2 - 150
Fixing spanner for ring nut and front ring		5.05.800.062/0000	5 - 25
Legend insert without legend		5.70.803.000/2000	

RAFIX 22 QR signal indicator, round collar



Colour of lens	Form of collar	Order no. complete
transparent colourless	round	1.74.505.501/1000
transparent red	round	1.74.505.501/1300
transparent yellow	round	1.74.505.501/1400
transparent green	round	1.74.505.501/1500
transparent blue	round	1.74.505.501/1600

Technical data see page 2 - 136

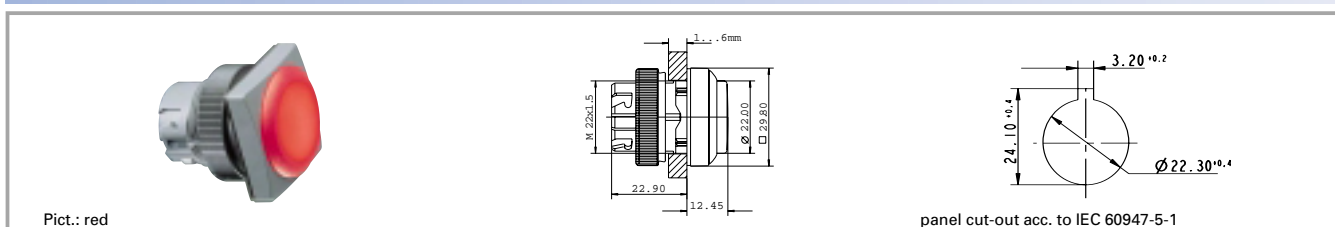
Accessories:

Legend insert without legend: 5.70.803.000/2000

2

RAFIX
22 QR

RAFIX 22 QR signal indicator, square collar



Colour of lens	Form of collar	Order no. complete
transparent colourless	square	1.74.505.551/1000
transparent red	square	1.74.505.551/1300
transparent yellow	square	1.74.505.551/1400
transparent green	square	1.74.505.551/1500
transparent blue	square	1.74.505.551/1600

Technical data see page 2 - 136

Accessories:

Legend insert without legend: 5.70.803.000/2000

RAFIX 22 QR contact blocks with silver contacts, screw terminals and cage clamp terminals



Pict.: Silver contacts, 1 NC, cage clamp terminals

Silver contacts, 2 NC, screw terminals

Assembly

2

General data

Most of the values specified apply to both screw terminal and cage clamp terminal versions.
Any deviating values specific to the cage clamp version are given in parentheses ().

Technical data

Dimensions

Length	39.5 mm
Width	10 mm
Height	46 mm
Mounting depth without cable	56.4 mm

Mechanical design

Mounting	snap on coupling and actuator
Contact system	bridgecontact self cleaning
Contact materials	Ag
Contact arrangement	see order block
NC contact forcibly actuated acc. to IEC 60947-5-1	yes
Terminals	see order block
Terminal marking	colour encoded
Robustness	100 N
Operating force	approx. 5 N for 1 contact element

Wire range solid wires without wire end sleeves	2 x 0.75 ... 2.5 mm ²
Wire range stranded wires without wire end sleeves	2 x 1.0 ... 1.5 (2 x 0.08 ... 2.5) mm ²
Wire range with wire end sleeves	2 x 0.75 ... 1.5 mm ²

Electrical characteristics acc. to IEC 60947

Rated insulation voltage AC/DC	400 V
Rated peak voltage	6000 V
Rated operating current I _e AC 12	10 A
Rated operating current I _e AC-15	125 V/10 A, 250 V/6 A, 400 V/3.5 A
Rated operating current I _e DC-13 Q300	24V/2.75A, 60V/1.1A, 125V/0.55A, 250V/0.275A
Degree of pollution	3

Positive opening travel	3 mm
Operating speed	5 ... 1000 mm/s

Electrical characteristics acc. to IEC 61058

Resistive load AC	10 A/250 V; 7.5 A/400 V
Motor load AC	6 A/250 V; 4 A/400 V (5 A/250 V)

Peak input current filament lamp AC	36 A
Peak capacity input current AC	100 A
Protection class	II

Lamp characteristics

Lamp socket	BA 9 s
-------------	--------

Other specifications

Operating life at 10 A/250 V AC	500000 (70000)
Switching reliability at 24V/5mA DC	10 x 10 ⁻⁶
Approvals	ENEC, cURus (UL + CSA)
Robustness	acc. IEC 60947-5-5
Corresponding to CE	acc. EU-guideline N 72/73
Shock resistance acc. to IEC 60068-2-27	50 g at 11 ms, amplitude half sinusoidal
Resistance to vibrations acc. to IEC 60068-2-6	10 g at 40 ... 500 Hz
Ambient temp. operating min.	-25 °C
Ambient temp. operating max.	+70°C (+50°C)
Storage temperature min.	-40 °C
Storage temperature max.	+80 °C
Flame class acc. to UL 94	V 0
Hot wire ignition acc. to IEC 60695-2-1	yes
Resistance to constant environment	IEC 600 68-2-3 and 2-30
Resistance at variable environment	IEC 600 68-2-14 and 2-33

RAFIX
22 QR

Accessories RAFX 22 QR contact blocks with silver contacts, screw terminals and cage clamp terminals

Description	Photo	Order no.	Page
Coupling with reference numbers 1-3-2		5.05.510.935/0000	2 - 158
Coupling with reference numbers 1/2-5/6-3/4		5.05.510.936/0000	2 - 158
Marking tag for contact blocks/lamp sockets with screw terminals		5.40.010.131/0000	2 - 160

2

RAFIX 22 QR contact block with silver contacts

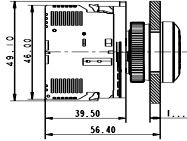
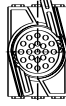


Terminals	Contact arrangement	Contact materials	Lamp socket	Order no. complete
screw terminals	1 NC	Ag		5.00.100.139/0000
screw terminals	1 NO	Ag		5.00.100.140/0000
screw terminals	2 NC	Ag		5.00.100.141/0000
screw terminals	2 NO	Ag		5.00.100.142/0000
screw terminals	1 NC + 1 NO	Ag		5.00.100.143/0000
clamp cage	1 NC	Ag		5.00.100.144/0000
clamp cage	1 NO	Ag		5.00.100.145/0000

RAFIX
22 QR

Technical data see page 2 - 138

RAFIX 22 QR contact block assembly, with coupling, without lamp socket, silver contacts



Pict.: Silver contacts, 1 NO

2

RAFIX
22 QR

Terminals	Contact arrangement	Contact materials	Lamp socket	Order no. complete
screw terminals	1 NC	Ag		1.20.124.001/0000
screw terminals	1 NO	Ag		1.20.124.002/0000
screw terminals	1 NC, 1 NC	Ag		1.20.124.003/0000
screw terminals	1 NO , 1 NO	Ag		1.20.124.004/0000
screw terminals	1 NO , 1 NC	Ag		1.20.124.005/0000
screw terminals	1 NC + 1 NO	Ag		1.20.124.017/0000
screw terminals	1 NC + 1 NO , 1 NC + 1 NO	Ag		1.20.124.018/0000
screw terminals	2 NC	Ag		1.20.124.019/0000
screw terminals	2 NO	Ag		1.20.124.020/0000
clamp cage	1 NC	Ag		1.20.125.001/0000
clamp cage	1 NO	Ag		1.20.125.002/0000
clamp cage	1 NC, 1 NC	Ag		1.20.125.003/0000
clamp cage	1 NO , 1 NO	Ag		1.20.125.004/0000
clamp cage	1 NO , 1 NC	Ag		1.20.125.005/0000

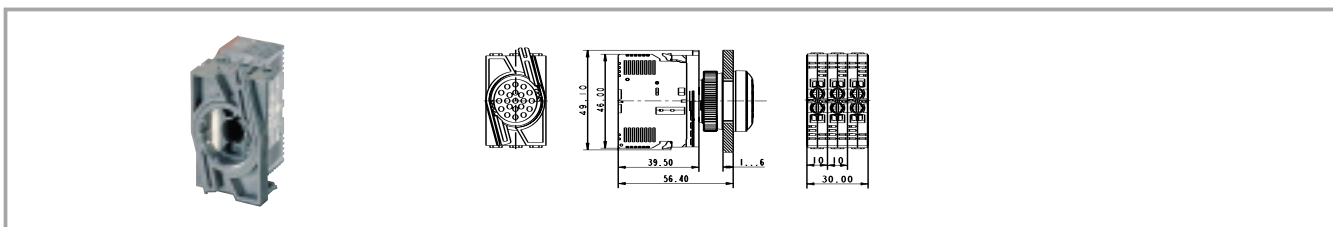
Technical data see page 2 - 138

Contact arrangement example (1 NO = 1 normally open contact, 1 NC = 1 normally closed contact)

1 NO, 1 NC = **Two separate contact blocks** are mounted on the coupling: One with a normally open contact and one with a normally closed contact

1 NC + 1 NO = **One contact block with double contacts** (1 normally closed and 1 normally open) is mounted on the coupling.

RAFIX 22 QR contact block assembly, with coupling and lamp socket, silver contacts



Terminals	Contact arrangement	Contact materials	Lamp socket	Order no. complete
screw terminals	1 NC	Ag	BA 9 s	1.20.124.021/0000
screw terminals	1 NO	Ag	BA 9 s	1.20.124.022/0000
screw terminals	1 NC, 1 NC	Ag	BA 9 s	1.20.124.023/0000
screw terminals	1 NO , 1 NO	Ag	BA 9 s	1.20.124.024/0000
screw terminals	1 NO , 1 NC	Ag	BA 9 s	1.20.124.025/0000
screw terminals	1 NC + 1 NO	Ag	BA 9 s	1.20.124.027/0000
screw terminals	1 NC + 1 NO , 1 NC + 1 NO	Ag	BA 9 s	1.20.124.028/0000
screw terminals	2 NC	Ag	BA 9 s	1.20.124.029/0000
screw terminals	2 NO	Ag	BA 9 s	1.20.124.030/0000
clamp cage	1 NC	Ag	BA 9 s	1.20.125.021/0000
clamp cage	1 NO	Ag	BA 9 s	1.20.125.022/0000
clamp cage	1 NC, 1 NC	Ag	BA 9 s	1.20.125.023/0000
clamp cage	1 NO , 1 NO	Ag	BA 9 s	1.20.125.024/0000
clamp cage	1 NO , 1 NC	Ag	BA 9 s	1.20.125.025/0000

2

RAFIX
22 QR

Technical data see page 2 - 138

Accessories:

- Filament lamp, BA 9s base (MBC/MCC), 12 - 15 V: **1.90.060.132/0000**
- Filament lamp, BA 9s base (MBC/MCC), 24 - 30 V: **1.90.060.133/0000**
- Filament lamp, BA 9s base (MBC/MCC), 110 - 130 V: **1.90.060.137/0000**
- LED BA 9s (MBC/MCC) superbright, red, 24 V: **1.90.690.341/0000**
- LED BA 9s (MBC/MCC) superbright, green, 24 V: **1.90.690.342/0000**
- LED BA 9s (MBC/MCC) superbright, yellow, 24 V: **1.90.690.343/0000**
- LED BA 9s (MBC/MCC) superbright, blue, 24 V: **1.90.690.344/0000**
- LED BA 9s (MBC/MCC) superbright, white, 24 V: **1.90.690.345/0000**

Contact arrangement example (1 NO = 1 normally open contact, 1 NC = 1 normally closed contact)

1 NO, 1 NC = **Two separate contact blocks** are mounted on the coupling: One with a normally open contact and one with a normally closed contact

1 NC + 1 NO = **One contact block with double contacts** (1 normally closed and 1 normally open) is mounted on the coupling.

BA 9s (MBC/MCC) = Lamp socket snaps onto coupling centre.

RAFIX 22 QR contact blocks with gold contacts, screw terminals and cage clamp terminals



Pict.: Au contacts, 1 NC, screw terminals

Au contacts, 1 NO, cage clamp terminals

Assembly: Au contacts, 1NC + 1NO

2

General data

Most of the values specified apply to both screw terminal and cage clamp terminal versions. Any deviating values specific to the cage clamp version are given in parentheses ().

Technical data

Dimensions

Length	39.5 mm
Width	10 mm
Height	46 mm
Mounting depth without cable	56.4 mm

Mechanical design

Mounting	snap on coupling and actuator
Contact system	bridgecontact self cleaning
Contact materials	Au
Contact arrangement	see order block
NC contact forcibly actuated acc. to IEC 60947-5-1	yes
Terminals	see order block
Terminal marking	colour encoded
Robustness	100 N
Operating force	approx. 5 N for 1 contact element

Wire range solid wires without wire end sleeves	2 x 0.75 ... 2.5 mm ²
Wire range stranded wires without wire end sleeves	2 x 1.0 ... 1.5 mm ²
Wire range with wire end sleeves	2 x 0.75 ... 1.5 mm ²

Electrical characteristics

Operating voltage AC/DC	1 ... 42 V
Operating current AC/DC	0.01 ... 100 mA

Lamp characteristics

Lamp socket	BA 9 s
-------------	--------

Other specifications

Operating life	1 million at 10 mA/ 24 V DC
Switching reliability at 24V/5mA DC	10 x 10 ⁻⁶
Robustness	acc. IEC 60947-5-5
Corresponding to CE	acc. EU-guideline N 72/73
Shock resistance acc. to IEC 60068-2-27	50 g at 11 ms, amplitude half sinusoidal
Resistance to vibrations acc. to IEC 60068-2-6	10 g at 40 ... 500 Hz
Ambient temp. operating min.	-25 °C
Ambient temp. operating max.	+70 °C
Storage temperature min.	-40 °C
Storage temperature max.	+80 °C
Resistance to constant environment	IEC 600 68-2-3 and 2-30
Resistance at variable environment	IEC 600 68-2-14 and 2-33

RAFIX 22 QR

Accessories RAFIX 22 QR contact blocks with gold contacts, screw terminals and cage clamp terminals

Description	Photo	Order no.	Page
Filament lamp, BA 9s base (MBC/MCC), 24 - 30 V		1.90.060.133/0000	5 - 8
Neon lamp BA 9s (MBC/MCC), 220 V AC (red)		1.90.560.102/0000	5 - 9
LED BA 9s (MBC/MCC) superbright, white, 24 V		1.90.690.345/0000	5 - 20
Marking tag for contact blocks/lamp sockets with screw terminals		5.40.010.131/0000	2 - 160

RAFIX 22 QR contact block with gold contacts



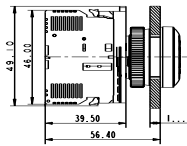
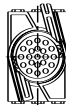
Terminals	Contact arrangement	Contact materials	Lamp socket	Order no. complete
screw terminals	2 NC	Au		5.00.100.161/0000
screw terminals	2 NO	Au		5.00.100.162/0000
screw terminals	1 NC + 1 NO	Au		5.00.100.163/0000
screw terminals	1 NC	Au		5.00.100.164/0000
screw terminals	1 NO	Au		5.00.100.165/0000
clamp cage	1 NC	Au		5.00.100.159/0000
clamp cage	1 NO	Au		5.00.100.160/0000

2

RAFIX
22 QR

Technical data see page 2 - 142

RAFIX 22 QR contact block assembly, with coupling, without lamp socket, gold contacts



Pict.: Gold contacts, 1NC + 1NO

2

RAFIX
22 QR

Terminals	Contact arrangement	Contact materials	Lamp socket	Order no. complete
screw terminals	1 NC	Au		1.20.124.101/0000
screw terminals	1 NO	Au		1.20.124.102/0000
screw terminals	1 NC, 1 NC	Au		1.20.124.103/0000
screw terminals	1 NO , 1 NO	Au		1.20.124.104/0000
screw terminals	1 NO , 1 NC	Au		1.20.124.105/0000
screw terminals	1 NC + 1 NO	Au		1.20.124.117/0000
screw terminals	1 NC + 1 NO , 1 NC + 1 NO	Au		1.20.124.118/0000
screw terminals	2 NC	Au		1.20.124.119/0000
screw terminals	2 NO	Au		1.20.124.120/0000
clamp cage	1 NC	Au		1.20.125.101/0000
clamp cage	1 NO	Au		1.20.125.102/0000
clamp cage	1 NC, 1 NC	Au		1.20.125.103/0000
clamp cage	1 NO , 1 NO	Au		1.20.125.104/0000
clamp cage	1 NO , 1 NC	Au		1.20.125.105/0000

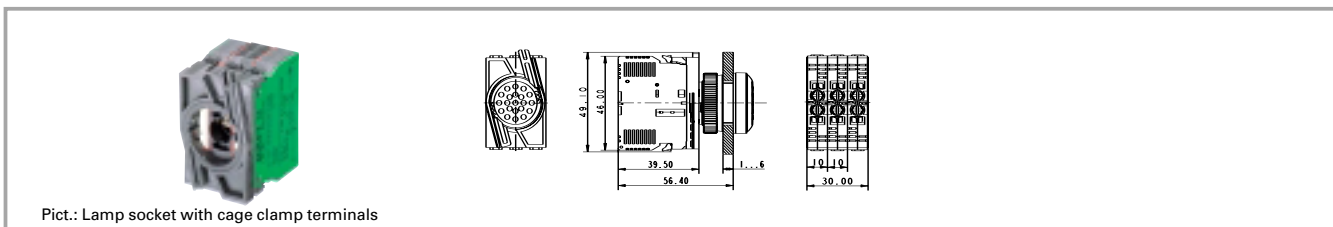
Technical data see page 2 - 142

Contact arrangement example (1 NO = 1 normally open contact, 1 NC = 1 normally closed contact)

1 NO, 1 NC = **Two separate contact blocks** are mounted on the coupling: One with a normally open contact and one with a normally closed contact

1 NC + 1 NO = **One contact block with double contacts** (1 normally closed and 1 normally open) is mounted on the coupling.

RAFIX 22 QR contact block assembly, with coupling and lamp socket, gold contacts



Terminals	Contact arrangement	Contact materials	Lamp socket	Order no. complete
screw terminals	1 NC	Au	BA 9 s	1.20.124.121/0000
screw terminals	1 NO	Au	BA 9 s	1.20.124.122/0000
screw terminals	1 NC, 1 NC	Au	BA 9 s	1.20.124.123/0000
screw terminals	1 NO , 1 NO	Au	BA 9 s	1.20.124.124/0000
screw terminals	1 NO , 1 NC	Au	BA 9 s	1.20.124.125/0000
screw terminals	1 NC + 1 NO	Au	BA 9 s	1.20.124.127/0000
screw terminals	1 NC + 1 NO , 1 NC + 1 NO	Au	BA 9 s	1.20.124.128/0000
screw terminals	2 NC	Au	BA 9 s	1.20.124.129/0000
screw terminals	2 NO	Au	BA 9 s	1.20.124.130/0000
clamp cage	1 NC	Au	BA 9 s	1.20.125.121/0000
clamp cage	1 NO	Au	BA 9 s	1.20.125.122/0000
clamp cage	1 NC, 1 NC	Au	BA 9 s	1.20.125.123/0000
clamp cage	1 NO , 1 NO	Au	BA 9 s	1.20.125.124/0000
clamp cage	1 NO , 1 NC	Au	BA 9 s	1.20.125.125/0000

2

RAFIX
22 QR

Technical data see page 2 - 142

Accessories:

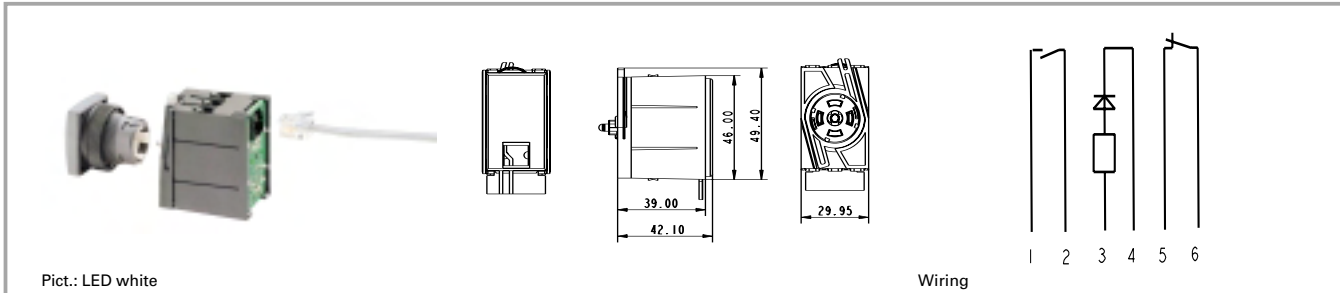
- Filament lamp, BA 9s base (MBC/MCC), 12 - 15 V: **1.90.060.132/0000**
- Filament lamp, BA 9s base (MBC/MCC), 24 - 30 V: **1.90.060.133/0000**
- Filament lamp, BA 9s base (MBC/MCC), 110 - 130 V: **1.90.060.137/0000**
- LED BA 9s (MBC/MCC) superbright, red, 24 V: **1.90.690.341/0000**
- LED BA 9s (MBC/MCC) superbright, green, 24 V: **1.90.690.342/0000**
- LED BA 9s (MBC/MCC) superbright, yellow, 24 V: **1.90.690.343/0000**
- LED BA 9s (MBC/MCC) superbright, blue, 24 V: **1.90.690.344/0000**
- LED BA 9s (MBC/MCC) superbright, white, 24 V: **1.90.690.345/0000**

Contact arrangement example (1 NO = 1 normally open contact, 1 NC = 1 normally closed contact)

- 1 NO, 1 NC = **Two separate contact blocks** are mounted on the coupling: One with a normally open contact and one with a normally closed contact
- 1 NC + 1 NO = **One contact block with double contacts** (1 normally closed and 1 normally open) is mounted on the coupling.

BA 9s (MBC/MCC) = Lamp socket snaps onto coupling centre.

RAFIX 22 QR Contact blocks with coupling, gold contacts, RJ 12 connector, integrated LED



Pict.: LED white

Wiring

2

Technical data

Dimensions

Length	49.4 mm
Width	29.95 mm
Height	42.1 mm
Mounting depth	62 mm

Mechanical design

Mounting	snap on actuator
Contact system	bridgecontact self cleaning
Contact materials	Au
Contact arrangement	see order block
NC contact forcibly actuated acc. to IEC 60947-5-1	yes
Terminals	RJ-12
Terminal marking	RJ-12 plug
Mounting grid	30 x 50
Robustness	100 N

Electrical characteristics

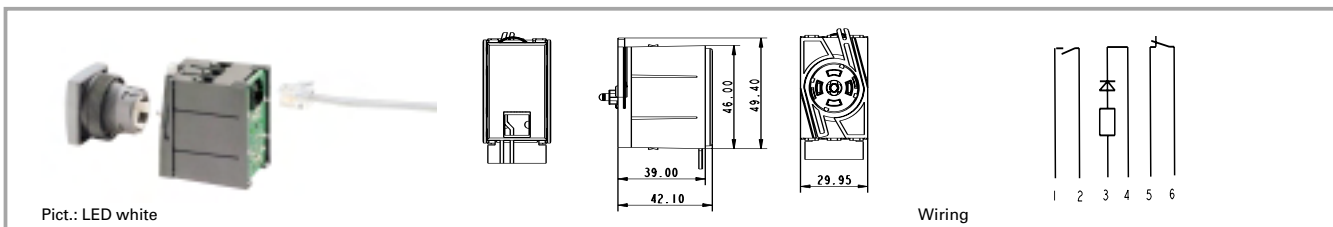
Operating voltage AC/DC	24 V
Operating current AC/DC	0.01 ... 50 mA

Other specifications

Operating life	1000000 at 50 mA/24 V DC
Switching reliability at 24V/5mA DC	10×10^{-6}
Ambient temp. operating min.	-25 °C
Ambient temp. operating without LED max.	+70 °C
Ambient temp. operating with LED max.	+50 °C
Storage temperature min.	-30 °C
Storage temperature max.	+80 °C
Integrated LED	see order block
LED colour	see order block
Resistance to constant environment	IEC 600 68-2-3 and 2-30
Resistance at variable environment	IEC 600 68-2-14 and 2-33

RAFIX
22 QR

RAFIX 22 QR Contact block with coupling, gold contacts, RJ 12 connector, integrated LED



Contact arrangement	Operating voltage AC/DC	Integrated LED	LED colour	Order no. complete
1 NC	24 V	no		1.20.128.001/0000
1 NC	24 V	yes	white	1.20.128.011/0000
1 NC	24 V	yes	red	1.20.128.021/0000
1 NC	24 V	yes	yellow	1.20.128.031/0000
1 NC	24 V	yes	green	1.20.128.041/0000
1 NC	24 V	yes	blue	1.20.128.051/0000
1 NO	24 V	no		1.20.128.002/0000
1 NO	24 V	yes	white	1.20.128.012/0000
1 NO	24 V	yes	red	1.20.128.022/0000
1 NO	24 V	yes	yellow	1.20.128.032/0000
1 NO	24 V	yes	green	1.20.128.042/0000
1 NO	24 V	yes	blue	1.20.128.052/0000
1 NC + 1 NO	24 V	no		1.20.128.003/0000
1 NC + 1 NO	24 V	yes	white	1.20.128.013/0000
1 NC + 1 NO	24 V	yes	red	1.20.128.023/0000
1 NC + 1 NO	24 V	yes	yellow	1.20.128.033/0000
1 NC + 1 NO	24 V	yes	green	1.20.128.043/0000
1 NC + 1 NO	24 V	yes	blue	1.20.128.053/0000

2

RAFIX
22 QR

Technical data see page 2 - 146

Other contact arrangement versions available on request.

RAFIX 22 QR lamp sockets BA 9s (MBC/MCC), screw terminals and cage clamp terminals



2

Technical data

Dimensions

Length	46 mm
Width	10 mm
Height	39.5 mm
Mounting depth without cable	56.4 mm

Mechanical design

Mounting	snap on coupling and actuator
Terminals	see order block
Terminal marking	X1 = anode, X2 = cathode

Kennwerte Lampenfassung

Lamp socket	BA 9 s
Operating voltage AC/DC	see order block
Lamp power max.	2 W
Lamp voltage	see order block

Other specifications

Approvals	see order block
Robustness	acc. IEC 60947-5-5
Shock resistance acc. to IEC 60068-2-27	50 g at 11 ms, amplitude half sinusoidal
Resistance to vibrations acc. to IEC 60068-2-6	10 g at 40 ... 500 Hz
Resistance to constant environment	IEC 600 68-2-3 and 2-30
Resistance at variable environment	IEC 600 68-2-14 and 2-33
Ambient temp. operating min.	-25 °C
Ambient temp. operating max.	+70 °C
Storage temperature min.	-40 °C
Storage temperature max.	+80 °C
Flame class acc. to UL 94	V 0
Hot wire ignition acc. to IEC 60695-2-1	yes

RAFIX
22 QR

Accessories RAFX 22 QR lamp sockets BA 9s (MBC/MCC), screw terminals and cage clamp terminals

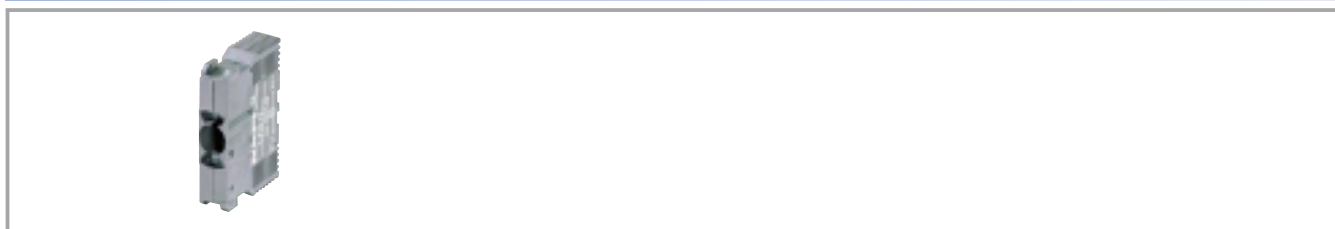
Description	Photo	Order no.	Page
Filament lamp, BA 9s base (MBC/MCC), 12 - 15 V		1.90.060.132/0000	5 - 8
Filament lamp, BA 9s base (MBC/MCC), 24 - 30 V		1.90.060.133/0000	5 - 8
Filament lamp, BA 9s base (MBC/MCC), 110 - 130 V		1.90.060.137/0000	5 - 8
Neon lamp BA 9s (MBC/MCC), 220 V AC (red)		1.90.560.102/0000	5 - 9
LED BA 9s (MBC/MCC) superbright, red, 24 V		1.90.690.341/0000	5 - 20
LED BA 9s (MBC/MCC) superbright, green, 24 V		1.90.690.342/0000	5 - 20
LED BA 9s (MBC/MCC) superbright, yellow, 24 V		1.90.690.343/0000	5 - 20

Accessories RAFIX 22 QR lamp sockets BA 9s (MBC/MCC), screw terminals and cage clamp terminals

Description	Photo	Order no.	Page
LED BA 9s (MBC/MCC) superbright, blue, 24 V		1.90.690.344/0000	5 - 20
LED BA 9s (MBC/MCC) superbright, white, 24 V		1.90.690.345/0000	5 - 20
Coupling with reference numbers 1-3-2		5.05.510.935/0000	2 - 158
Coupling with reference numbers 1/2-5/6-3/4		5.05.510.936/0000	2 - 158
Marking tag for contact blocks/lamp sockets with screw terminals		5.40.010.131/0000	2 - 160

2

RAFIX 22 QR lamp socket, without coupling

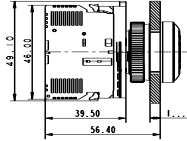


RAFIX
22 QR

Terminals	Diode and resistor	Approvals	Lamp socket	Operating voltage AC/DC	Lamp voltage	Order no. complete
screw terminals	no	ENEC 10/15; ULc	BA 9 s	6 ... 250 V	6 ... 250 V	5.00.070.074/0000
screw terminals	yes	ENEC 10/15; ULc	BA 9 s	250 V	130 V	5.00.070.080/0000
clamp cage	no	ENEC 10/15; ULc	BA 9 sBA 9 s	6 ... 250 V	6 ... 250 V	5.00.070.078/0000

Technical data see page 2 - 148

RAFIX 22 QR lamp socket assembly, with coupling



Pict.: Lamp socket with cage clamp terminals

2

Terminals	Diode and resistor	Approvals	Lamp socket	Operating voltage AC/DC	Lamp voltage	Order no. complete
screw terminals	no	ENEC 10/15; ULc	BA 9 s	6 ... 250 V	6 ... 250 V	1.71.213.001/0000
screw terminals	yes	ENEC 10/15; ULc	BA 9 s	250 V	130 V	1.71.213.004/0000
clamp cage	no	ENEC 10/15; ULc	BA 9 sBA 9 s	6 ... 250 V	6 ... 250 V	1.71.214.001/0000

Technical data see page 2 - 148

RAFIX
22 QR

RAFIX 22 QR lamp sockets with integrated LED, screw terminals



2

Technical data

Dimensions

Length	46 mm
Width	10 mm
Height	39.5 mm
Mounting depth without cable	56.4 mm

Mechanical design

Mounting	snap on coupling and actuator
Diode and resistor	see order block
LED colour	see order block
Terminals	screw terminals
Terminal marking	X1 = anode, X2 = cathode

Lamp characteristics

Operating voltage	see order block
Max. current, I _F	see order block

Other specifications

Approvals	ENEC 10/15; ULc
Robustness	acc. IEC 60947-5-5
Shock resistance acc. to IEC 60068-2-27	50 g at 11 ms, amplitude half sinusoidal
Resistance to vibrations acc. to IEC 60068-2-6	10 g at 40 ... 500 Hz
Resistance to constant environment	IEC 600 68-2-3 and 2-30
Resistance at variable environment	IEC 600 68-2-14 and 2-33
Ambient temp. operating min.	-20 °C
Ambient temp. operating max.	+65 °C
Storage temperature min.	-40 °C
Storage temperature max.	+80 °C
Flame class acc. to UL 94	V 0
Hot wire ignition acc. to IEC 60695-2-1	yes

RAFIX
22 QR

Accessories RAFX 22 QR lamp sockets with integrated LED, screw terminals

Description	Photo	Order no.	Page
Coupling with reference numbers 1-3-2		5.05.510.935/0000	2 - 158
Coupling with reference numbers 1/2-5/6-3/4		5.05.510.936/0000	2 - 158
Marking tag for contact blocks/lamp sockets with screw terminals		5.40.010.131/0000	2 - 160

RAFIX 22 QR lamp socket with integrated red LED, without coupling



Terminals	Diode and resistor	LED colour	Max. current, I _F	Operating voltage	Order no. complete
screw terminals		white	15 mA	AC/DC 24 V	5.00.070.083/0200
screw terminals		red	15 mA	AC/DC 24 V	5.00.070.083/0300
screw terminals		yellow	15 mA	AC/DC 24 V	5.00.070.083/0400
screw terminals		green	15 mA	AC/DC 24 V	5.00.070.083/0500
screw terminals		blue	15 mA	AC/DC 24 V	5.00.070.083/0600
screw terminals		white	16 mA	AC 115 V	5.00.070.085/0200
screw terminals		red	16 mA	AC 115 V	5.00.070.085/0300
screw terminals		yellow	16 mA	AC 115 V	5.00.070.085/0400
screw terminals		green	16 mA	AC 115 V	5.00.070.085/0500
screw terminals		blue	16 mA	AC 115 V	5.00.070.085/0600
screw terminals		white	16 mA	AC 230 V	5.00.070.086/0200
screw terminals		red	16 mA	AC 230 V	5.00.070.086/0300
screw terminals		yellow	16 mA	AC 230 V	5.00.070.086/0400
screw terminals		green	16 mA	AC 230 V	5.00.070.086/0500
screw terminals		blue	16 mA	AC 230 V	5.00.070.086/0600

2

RAFIX
22 QR

Technical data see page 2 - 152

RAFIX 22 QR special accessories



2

Accessories RAFIX 22 QR special accessories

Description	Photo	Order no.	Page
Fixing spanner for ring nut and front ring		5.05.800.062/0000	5 - 25

Housings for flush pushbuttons

RAFIX
22 QR



Short text	Feature 1	Feature 2	Order no.
Housings for pushbuttons, round collar, flush lens, momentary			1.30.240.601/0000
Housings for pushbuttons, square collar, flush lens, momentary			1.30.240.602/0000

Lenses for flush pushbuttons



Short text	Feature 1	Feature 2	Order no.
Lens, with diffuser	transparent colourless	flat lens	5.04.926.008/1000
Lens, with diffuser	transparent red	flat lens	5.04.926.008/1300
Lens, with diffuser	transparent yellow	flat lens	5.04.926.008/1400
Lens, with diffuser	transparent green	flat lens	5.04.926.008/1500
Lens, with diffuser	transparent blue	flat lens	5.04.926.008/1600
Lens	opaque black	flat lens	5.49.263.019/0100
Lens	opaque white	flat lens	5.49.263.019/0200
Lens	opaque red	flat lens	5.49.263.019/0300
Lens	opaque yellow	flat lens	5.49.263.019/0400
Lens	opaque green	flat lens	5.49.263.019/0500
Lens	opaque blue	flat lens	5.49.263.014/0600
Lens	opaque slate-grey	flat lens	5.49.263.019/0700

2

RAFIX
22 QR

Front ring



Pict.: metal

2

Short text	Feature 1	Feature 2	Order no.
Front ring, metal			5.45.638.015/6030
Front ring, plastic, black			5.45.639.020/0100
Front ring, plastic, red			5.45.639.020/0300
Front ring, plastic, yellow			5.45.639.020/0400
Front ring, plastic, green			5.45.639.020/0500
Front ring, plastic, blue			5.45.639.020/0600
Front ring, plastic, slate grey			5.45.639.020/0700
Front ring, plastic, silver grey			5.45.639.020/0800

RAFIX
22 QR

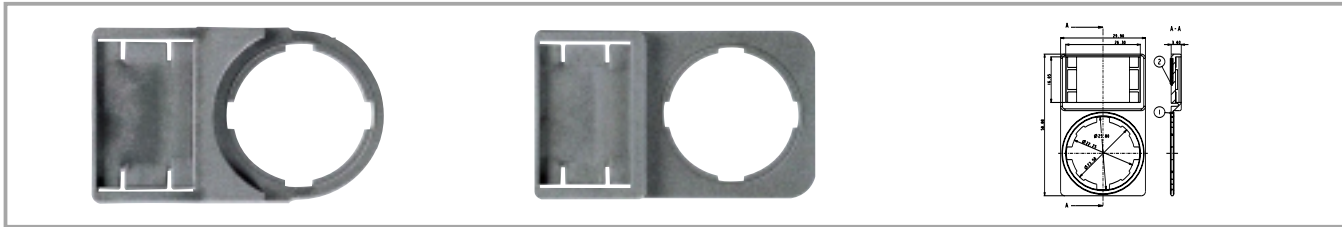
RAFIX 22 QR plastic front ring with protective cap



Pict.: slate-grey

Short text	Feature 1	Feature 2	Order no.
Front ring, plastic with thermoflex protective cap, slate grey	slate-grey		5.05.004.914/0700
Front ring, plastic with thermoflex protective cap, silver grey	silver-grey		5.05.004.914/0800

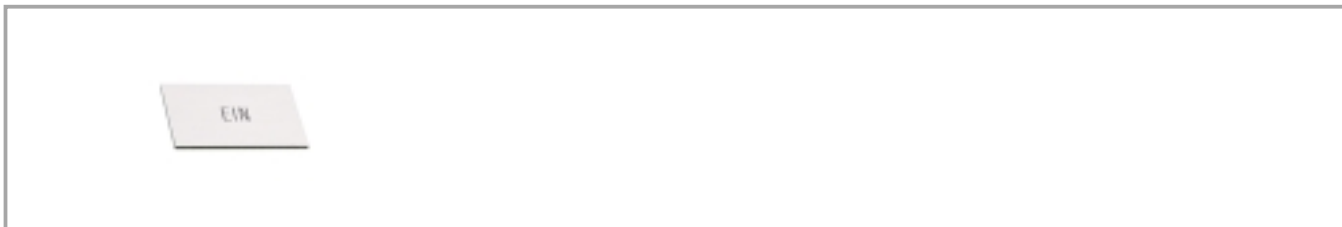
Label holder



Short text	Feature 1	Feature 2	Order no.
Label holder, round collar, with adhesive tape and release liner on back			5.07.620.010/0000
Label holder, square collar, with adhesive tape and release liner on back			5.07.620.011/0000

2

Legend label to clip into label holder 5.07.620.xxx



Short text	Feature 1	Feature 2	Order no.
Label for label holder, without legend, 16 x 28 x 0.9 mm			5.73.110.000/0000

RAFIX
22 QR

Legending available on request.

Coupling



2

Short text	Feature 1	Feature 2	Order no.
Coupling with reference numbers 1-3-2, for contact blocks with single contacts			5.05.510.935/0000
Coupling with reference numbers 1/2-5/6-3/4, for contact blocks with double contacts			5.05.510.936/0000

Blanking cap



RAFIX
22 QR

Short text	Feature 1	Feature 2	Order no.
Blanking cap IP65, ring nut, square			5.05.800.065/0000
Blanking cap IP65, ring nut, round			5.05.800.064/0000

Ring nut



Short text	Feature 1	Feature 2	Order no.
Ring nut (spare part)			5.24.279.012/0100
Ring nut with claw (spare part)			5.02.420.001/0000

2

Lamp tester



Short text	Feature 1	Feature 2	Order no.
Lamp tester			5.03.771.678/0000

RAFIX
22 QR

Protective cover, suitable for pushbuttons with flush lens



Short text	Feature 1	Feature 2	Order no.
Protective cover, latching	latching		5.05.511.195/0000
Protective cover, auto-closing	auto-closing		5.05.511.194/0000

Marking tag



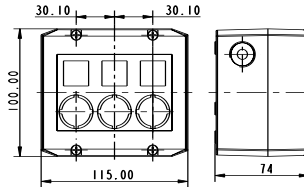
Short text	Feature 1	Feature 2	Order no.
Marking tag for contact blocks/lamp sockets with screw terminals			5.40.010.131/0000

2

Insulating housing IP65 for RAFIX 22 QR



Pict.: 3-module



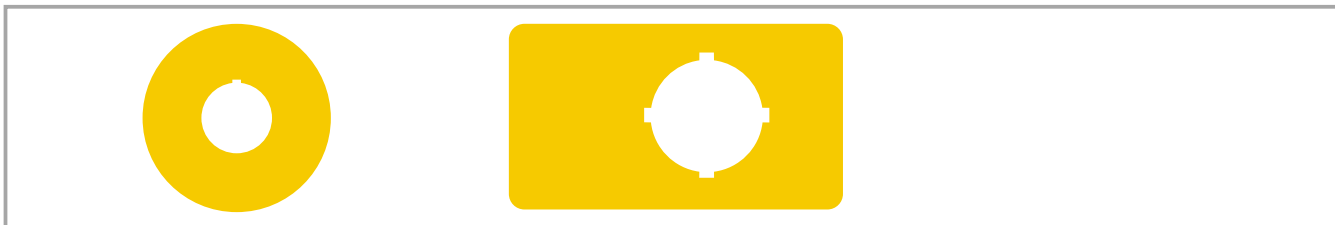
Short text	Feature 1	Feature 2	Order no.
Insulating housing IP65 for 22 QR, 1-module, light grey/dark grey	100 mm	55 mm	1.20.810.201/0000
Insulating housing IP65 for 22 QR, 1-module, yellow/yellow	100 mm	55 mm	1.20.810.202/0000
Insulating housing IP65 for 22 QR, 2-module, light grey/dark grey	100 mm	115 mm	1.20.820.201/0000
Insulating housing IP65 for 22 QR, 3-module, light grey/dark grey	100 mm	115 mm	1.20.830.201/0000
Insulating housing IP65 for 22 QR, 4-module, light grey/dark grey	100 mm	145 mm	1.20.840.201/0000

Accessories:

Label sheet for housings: 5.40.451.283/0000

- Attractive plastic housing to accommodate up to 4 control components
- 2 cable entries prepared: 1-,2-,3-part: M20x1,5, 4-part: M25x1,5
- Degree of protection IP 65 to DIN
- All grey housings with overlay, legending possible with legend inserts
- Wall mounting with 2 screws through housing bottom prepared
- Dimensions: (feature 2) x 100 mm x 74 mm
- Accessories: 50 pre-perforated legend inserts on a DIN A4 sheet for printing with a PC printer

Emergency stop label plate



Short text	Feature 1	Feature 2	Order no.
Emergency stop label, yellow, round 60 mm, rigid PVC, with legend "NOT-AUS"		60 mm	5.76.207.001/0400
Emergency stop label, yellow, round 60 mm, rigid PVC, with legend "EMERGENCY-STOP/ARRET D'URGENCE"		60 mm	5.76.207.002/0400
Emergency stop label, yellow, round 60 mm, PVC adhesive, without legend		60 mm	5.76.204.100/0400
Emergency stop label, yellow, round 60 mm, PVC adhesive, with legend "NOT-AUS"		60 mm	5.76.204.101/0400
Emergency stop label, yellow, round 60 mm, PVC adhesive, with legend "ARRET D'URGENCE"		60 mm	5.76.204.102/0400
Emergency stop label, yellow, round 60 mm, PVC adhesive, with legend "EMERGENCY-STOP"		60 mm	5.76.204.103/0400
Emergency stop label, yellow 36 x 64 mm, PVC adhesive, without legend	64 mm	36 mm	5.76.205.011/0400

Degree of protection: Rigid PVC: IP 40, adhesive foil: IP65.

2

RAFIX
22 QR

X-ON Electronics

Largest Supplier of Electrical and Electronic Components

Click to view similar products for [c&k manufacturer](#):

Other Similar products are found below :

[ESMK1215NCL130](#) [QS1 KQS1 BK S C 773302263](#) [473202000](#) [479603000](#) [4151](#) [SERU AU BRAUN](#) [7101J50V5QE2](#) [7101K2CWZBE](#)
[7101MD9ABE2](#) [7101SDV7QE](#) [7101SDZBE2](#) [7103T1CWV3GE](#) [7105K2CWZQE](#) [7105TCWZBES](#) [7108J2ZQE1](#) [7201TCWCBE](#)
[7203MCWCQE](#) [7203T1ZQE](#) [7207SYCBE](#) [7208L41YZQE](#) [7211SPY3AV2SE2](#) [7215J1AV2BE2](#) [7215JBV6BE](#) [7215L3YZQE](#)
[ET05LD1AGE](#) [ET05MD1AVBE](#) [7401J3ZQE3](#) [7405MHZBE](#) [7411J3ZQE1](#) [752708000](#) [FA0115RN02Q](#) [8161LHZ3QE22](#) [8161LHZQE2](#)
[FLT 2U EE 01A](#) [MMGGF5L0T](#) [MP01R133CBE](#) [A10403RNZQE](#) [1.20123.0050000](#) [A11205RNZQ](#) [A20303RNCG](#) [A30415RSCG](#) [12TL402](#)
[ADPFF3J04AW](#) [1.30070.0011002](#) [DM22J11S205PQ](#) [DT450T](#) [E101J3V31QE2](#) [E101JAAV2QE](#) [E201J11CQE32](#)