



General data

Sockets to accommodate filament lamps and LEDs with bases.

Content

Panel mounting sockets W 2 x 4.6d
Panel mounting sockets W 2 x 4.6d
Panel mounting sockets W 2 x 4.6d

Panel mounting sockets, tubular lamp holders
Panel mounting sockets, tubular lamp holders

Panel mounting sockets BA 15d
Panel mounting sockets BA 15d

3 - 60
3 - 61
3 - 61

3 - 62
3 - 63

3 - 64
3 - 64

3

Sockets

Panel mounting sockets W 2 x 4.6d



Technical data

Mechanical design

Mounting see order block
 Terminals see order block
 Lamp socket W 2 x 4.6d

Electrical characteristics

Limit values 42 V/1.5 W

Other specifications

Weight 1 g

3

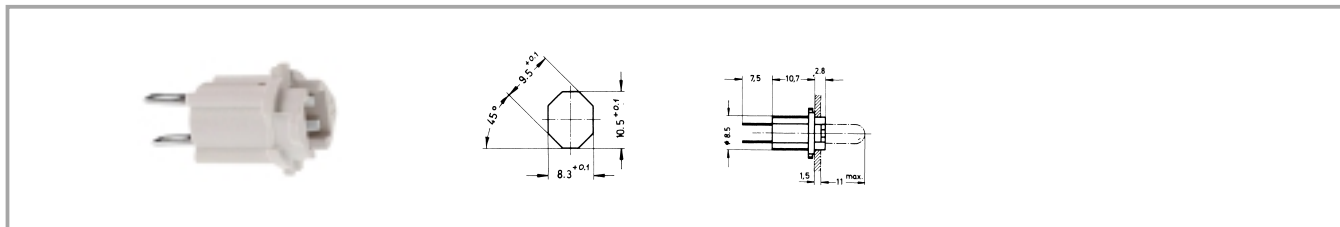
Accessories Panel mounting sockets W 2 x 4.6d

Description	Photo	Order no.	Page
Filament lamp, W 2 x 4.6d base, 24 - 30 V		1.90.120.005/0000	5 - 4
Filament lamp, W 2 x 4.6d base, 60 V		1.90.120.009/0000	5 - 4
Filament lamp, W 2 x 4.6d base, 48 V		1.90.120.010/0000	5 - 4
Filament lamp, W 2 x 4.6d base, 24 V		1.90.120.011/0000	5 - 4
Filament lamp, W 2 x 4.6d base, 6 V		1.90.120.013/0000	5 - 4
LED W 2 x 4.6d superbright, red, 24 V		1.90.690.361/0000	5 - 16
LED W 2 x 4.6d superbright, green, 24 V		1.90.690.362/0000	5 - 16
LED W 2 x 4.6d superbright, yellow, 24 V		1.90.690.363/0000	5 - 16
LED W 2 x 4.6d superbright, blue, 24 V		1.90.690.364/0000	5 - 16
		1.90.690.365/0000	5 - 16

Sockets

Panel mounting sockets

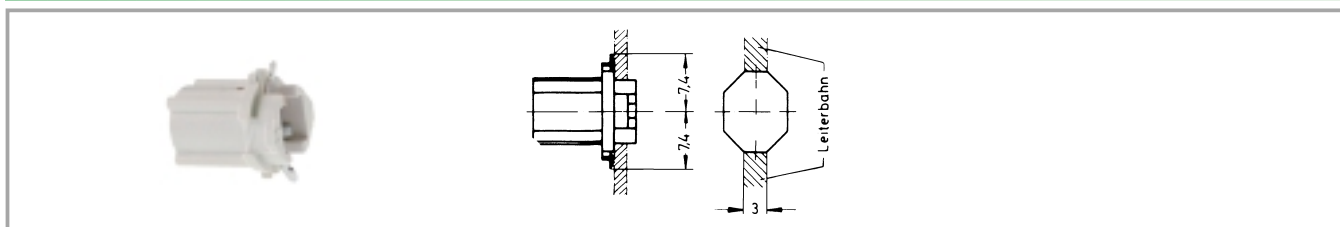
Panel mounting sockets W 2 x 4.6d



Lamp socket	Limit values	Terminals	Mounting	Order no. complete
W 2 x 4.6d	42 V/1.5 W	2 quick connectors 2.8 x 0.5	90° turn	1.72.401.001/0000

Technical data see page 3 - 60

Panel mounting sockets W 2 x 4.6d



Lamp socket	Limit values	Terminals	Mounting	Order no. complete
W 2 x 4.6d	42 V/1.5 W	2 spring contacts	90° turn	1.72.401.021/0000

Technical data see page 3 - 60

3

Sockets

Panel mounting sockets, tubular lamp holders



Technical data

Mechanical design

Mounting	cut-out in housing
Terminals	screw terminals
Lamp socket	S 8.5
Insulation group	according to VDE 0110 b/DIN 57110 b

Electrical characteristics

Limit values	2 A/42 V
--------------	----------

Other specifications

Weight	11 g
--------	------

3

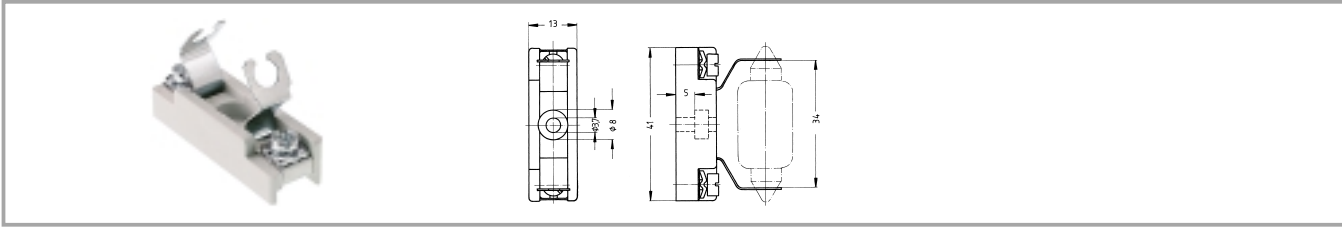
Accessories Panel mounting sockets, tubular lamp holders

Description	Photo	Order no.	Page
Filament lamp, S 8.5 base, 24 V, shape L		1.90.111.003/0000	
Filament lamp, S 8.5 base, 24 V, shape K		1.90.111.103/0000	

Sockets

Panel mounting sockets

Panel mounting sockets, tubular lamp holders



Lamp socket	Limit values	Terminals	Mounting	Order no. complete
S 8.5	2 A/42 V	screw terminals	cut-out in housing	1.02.570.021/0000

Technical data see page 3 - 62

3

Sockets

Panel mounting sockets BA 15d



Technical data

Mechanical design

Mounting see order block
 Terminals see order block
 Lamp socket BA 15 d

Electrical characteristics

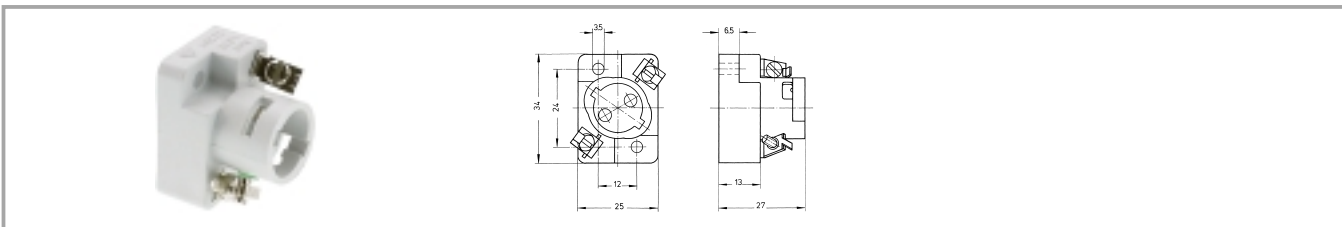
Limit values see order block

Other specifications

Weight see order block

3

Panel mounting sockets BA 15d



Lamp socket	Limit values	Terminals	Mounting	Order no. complete
BA 15 d	250 V/4 W	screw terminals	cut-out in housing	1.02.582.001/0000

Sockets

Technical data see page 3 - 64

Approvals: VDE 2 A, T135°C.

X-ON Electronics

Largest Supplier of Electrical and Electronic Components

Click to view similar products for [Standard LEDs - SMD category](#):

Click to view products by [C&K manufacturer](#):

Other Similar products are found below :

[LTST-C19GD2WT](#) [LTST-N683GBEW](#) [597-3006-607F](#) [597-3403-607F](#) [LTW-K140SZR40](#) [LTW-M140ZVS](#) [598-8110-100F](#) [598-8170-100F](#)
[598-8610-202F](#) [7012X7](#) [AAAF5060QBFSEEZGS](#) [12-22SURSYGC/S530-A3/E2/TR8](#) [1383SURT/S530-A3/TR1\(R\)](#) [APT1608QGW](#)
[EASV1803BA0](#) [SML310BATT86](#) [SML-512VWT86A](#) [SML-LX0606SISUGC/A](#) [SML-LXL1307SRC-TR](#) [SML-LXR851SIUPGUBC](#)
[LT1ED53A](#) [17-21/G6C-FM1N2B/3T](#) [FAT801-S](#) [SSL-LXA227IC-TR31A](#) [AM27ZGC03](#) [APB3025SGNC](#) [APHK1608VGCA](#) [APT2012QGW](#)
[CLMVC-FKA-CA1E1L81BB7C3C3](#) [CLYBA-FKA-CFHHL9BBB7A363](#) [CMD11504UR](#) [LTW-020ZDCG](#) [LTW-21TS5](#) [LTW-K140SZR30](#)
[HSMY-C177](#) [UYGT801-S](#) [KVH1C100MF6R](#) [42-21SYGC/S530-E1/TR8](#) [YGFR411-H](#) [597-2311-402F](#) [597-2712-602F](#) [5973212407NF](#)
[597-3302-607F](#) [597-5202-407F](#) [598-8330-117F](#) [SAW8WA2A-L35M40-CA](#) [SML013WBDW1](#) [SML-LX0402IC-TR](#) [CLMVC-FKA-](#)
[CLBDGL7LBB79353](#) [VLMKG3400-GS08](#)