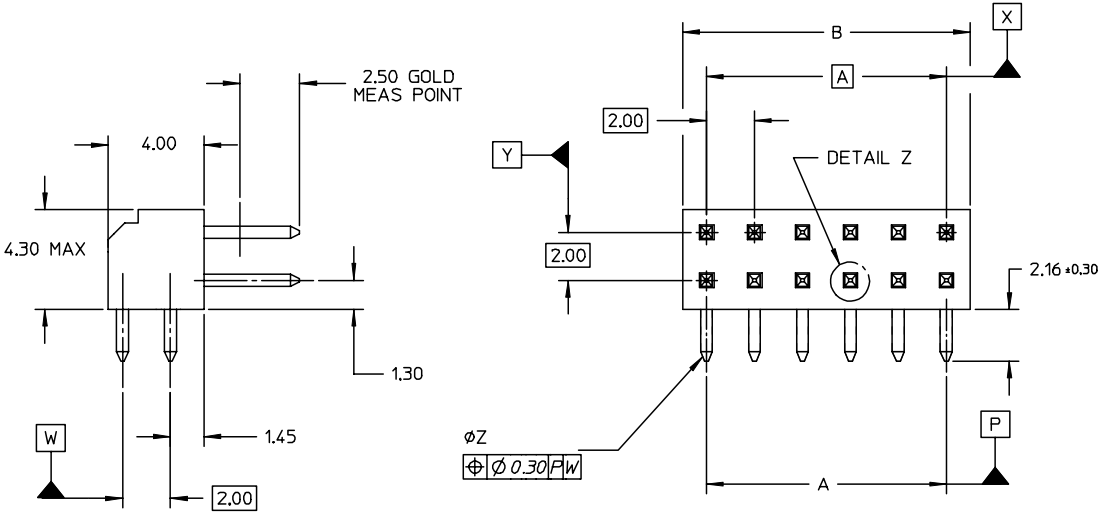
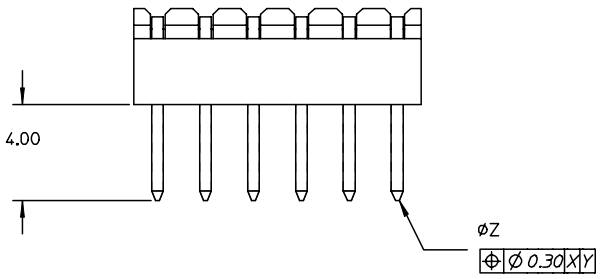
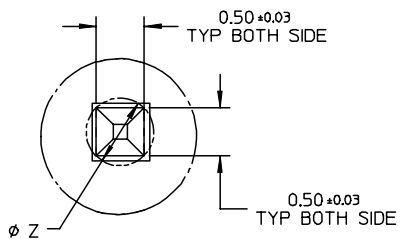


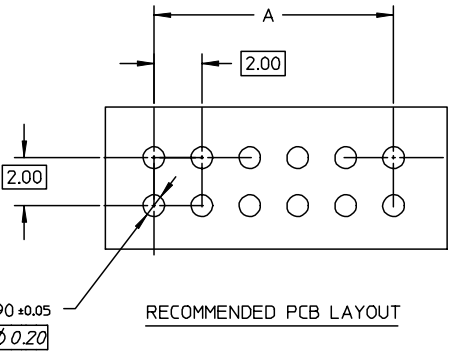
87760

PART NUMBER	CKT SIZE	A	B
87760-0878	08	6.00	8.00
87760-1078	10	8.00	10.00
87760-1278	12	10.00	12.00
87760-1678	16	14.00	16.00
87760-2278	22	20.00	12.00
87760-3078	30	28.00	30.00



LEGEND:
 87760 - * * 7 8
 CKT SIZE (SEE TABLE) PLATING (SEE NOTE 2)

- NOTES:**
- MATERIAL:
 HSG: PCT, 30% GLASS FILLED, UL 94V-0, COLOUR BLACK.
 PIN: 0.50MM SQ PHOSPHOR BRONZE 510
 - PLATING:
 0.38um MIN GOLD IN CONTACT AREA, TIN IN SOLDER TAIL AREA, BOTH OVER NICKEL OVERALL
 - 12 CKT USED FOR ILLUSTRATION ONLY
 - PART TO BE PACKED IN POCKET TRAY.
 - PRODUCT SPEC PS-87761-100 APPLIES.
 - RECOMMENDED PCB BOARD THK 1.30±0.10 MM. MAX.



EC NO: S2004-0195 DRWN: KSEE 2003/12/15 CHKD: KCLING 2003/12/15 APPR: SKTOH 2003/12/19	DESCRIPTION REV A	QUALITY SYMBOLS	GENERAL TOLERANCES (UNLESS SPECIFIED)	SCALE NTS	DESIGN UNITS METRIC	THIRD ANGLE PROJECTION	REVISE ON CAD ONLY															
		▼ = 0 ▽ = 0	<table border="1"> <thead> <tr> <th></th> <th>mm</th> <th>INCH</th> </tr> </thead> <tbody> <tr> <td>4 PLACES</td> <td>± ---</td> <td>± ---</td> </tr> <tr> <td>3 PLACES</td> <td>± ---</td> <td>± ---</td> </tr> <tr> <td>2 PLACES</td> <td>± 0.2</td> <td>± ---</td> </tr> <tr> <td>1 PLACE</td> <td>± ---</td> <td>± ---</td> </tr> </tbody> </table>		mm	INCH	4 PLACES	± ---	± ---	3 PLACES	± ---	± ---	2 PLACES	± 0.2	± ---	1 PLACE	± ---	± ---	DIMENSION STYLE MM ONLY	TITLE	SALES DRAWING MGRID 2MM DUAL ROW R/A HDR.	
			mm	INCH																		
		4 PLACES	± ---	± ---																		
3 PLACES	± ---	± ---																				
2 PLACES	± 0.2	± ---																				
1 PLACE	± ---	± ---																				
DRAFT WHERE APPLICABLE	ANGULAR ± 1 °	DRAWN BY DATE KSEE 2003/10/16	CHECKED BY DATE KCLING 2003/12/02	MOLEX INCORPORATED																		
MUST REMAIN WITHIN DIMENSIONS		APPROVED BY DATE SKTOH 2003/12/11	MATERIAL NO. SEE TABLE	DOCUMENT NO. SD-87760-126	SHEET NO. 1 OF 1																	

X-ON Electronics

Largest Supplier of Electrical and Electronic Components

Click to view similar products for [Headers & Wire Housings](#) category:

Click to view products by [Molex](#) manufacturer:

Other Similar products are found below :

[95000-104TRLF](#) [10135584-644402LF](#) [DF62W-EP2022PCA](#) [95000-106TRLF](#) [DF62W-2022SCA](#) [DF62W-EP2022PC](#) [2203348](#) [DF62W-2022SC](#) [1084018](#) [1029039](#) [1084017](#) [802-10-012-10-002000](#) [1112640](#) [1112639](#) [000-34000](#) [0009482033](#) [0009507031](#) [57102-S06-03LF](#) [57202-S52-04LF](#) [PCN6-15S-2.5E](#) [0039019024](#) [58102-G61-06LF](#) [582553-1](#) [0009485154](#) [0009508121](#) [0022285053](#) [0050291907](#) [018731A](#) [LY20-4P-DT1-P1E-BR](#) [02.125.8002.8](#) [60101931](#) [60598-1 \(Cut Strip\)](#) [M1625-3R/100](#) [61062-3](#) [61082-181009](#) [636-1427](#) [638009-1](#) [641938-9](#) [641991-4](#) [644168-1](#) [647662-1](#) [65039-019ELF](#) [65817-002LF](#) [65817-015LF](#) [65863-015LF](#) [66207-023LF](#) [67016-026LF](#) [67046-001LF](#) [67095-007LF](#) [67230-005LF](#)