

SWS50 SPECIFICATIONS

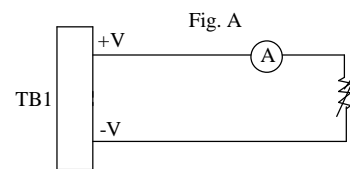
CA729-01-01A

ITEMS		MODEL	SWS50-3	SWS50-5	SWS50-12	SWS50-15	SWS50-24
1	Nominal Output Voltage	V	3.3	5	12	15	24
2	Maximum Output Current	A	10	10	4.3	3.5	2.1
3	Maximum Output Power	W	33	50	51.6	52.5	50.4
4	Efficiency (Typ) (115/230VAC) (* 1)	%	73 / 70	77 / 75	82 / 79	84 / 80	84 / 80
5	Input Voltage Range (* 2, 3)	-	85 ~ 265VAC (47-63Hz) or 120 ~ 370VDC				
6	Input Current (Typ) (115/230VAC) (* 1)	A	0.7 / 0.5	1.2 / 0.6			
7	Inrush Current (Typ) (* 4)	-	20A at 115VAC, 40A at 230VAC, Ta=25°C, Cold Start				
8	Output Voltage Range	V	2.97~3.63	4.5~5.5	10.8~13.2	13.5~16.5	21.6~26.4
9	Ripple and Noise (115/230VAC) (* 1, 5)	mV	80	80	80	100	100
10	Line Regulation (* 5, 6)	mV	20	20	48	60	96
11	Load Regulation (* 5, 7)	mV	40	50	96	120	144
12	Temperature Coefficient	-	Less than 0.02%/°C				
13	Over Current Protection (* 8)	A	10.5~	10.5~	4.5~	3.7~	2.2~
14	Over Voltage Protection (* 9)	V	3.79~4.95	5.75~6.95	13.8~16.2	17.2~20.3	27.6~32.4
15	Hold-Up Time (Typ) (115/230VAC) (* 1)	-	20ms / 160ms				
16	Leakage current (* 10)	-	1mA Max, 0.3mA(Typ) at 115VAC / 0.6mA(Typ) at 230VAC				
17	Series Operation	-	Possible				
18	Operating Temperature (* 11)	-	- 10 ~ + 60 °C (Refer to Output Derating Curve)				
19	Operating Humidity	-	30 ~ 90 %RH (No dewdrop)				
20	Storage Temperature	-	- 30 ~ +85°C				
21	Storage Humidity	-	10 ~ 95%RH (No dewdrop)				
22	Cooling	-	Convection cooling				
23	Withstand Voltage	-	Input - Output : 3.0kVAC (20mA), Input - FG : 2.0kVAC (20mA) Output - FG : 500VAC (100mA) for 1min.				
24	Isolation Resistance	-	More than 100MΩ at Ta=25°C and 70%RH, Output - FG : 500VDC				
25	Vibration	-	At no operating, 10 - 55Hz (sweep for 1min) 19.6m/s ² Constant, X, Y, Z. 1hour each				
26	Safety	-	Approved by UL60950, CSA60950, EN60950, EN50178				
27	EMI (* 1)	-	Built to meet FCC-Class B, EN55011/EN55022-B				
28	Immunity (* 1)	-	Built to meet EN61000-4-2,-3,-4,-5,-6,-8,-11				
29	Weight (Typ)	g	400				
30	Dimension	mm	37 x 92 x 159 (Refer to Outline Drawing)				

* Read instruction manual carefully , before using the power supply unit.

= NOTES=

- * 1 : At maximum output power, nominal input voltage, Ta = 25°C.
- * 2 : For cases where conformance to various safety specs (UL, CSA, EN) are required, to be described as 100 - 240VAC, 50 / 60Hz on name plate.
- * 3 : Please refer to Output Derating Curve for input voltage less than 100VAC (next page).
- * 4 : Not applicable for the in-rush current to Noise Filter for less than 0.2ms.
- * 5 : Please refer to Fig A for measurement of line & load regulation, ripple and noise voltage.
Ripple & noise are measured at 20MHz by using a 12" twisted pair terminated with a 0.1uF and 47uF capacitor.
- * 6 : 85 - 265VAC, constant load.
- * 7 : No load - Full load(Maximum power), constant input voltage.
- * 8 : Current limiting with automatic recovery.
Avoid to operate at overload or dead short for more than 30seconds.
- * 9 : OVP circuit will shutdown output, manual reset (Re power on).
- *10: Measured by each measuring method of UL, CSA, EN.
- *11: Refer to Output Derating Curve (next page) for details of output derating versus ambient temperature and mounting method .

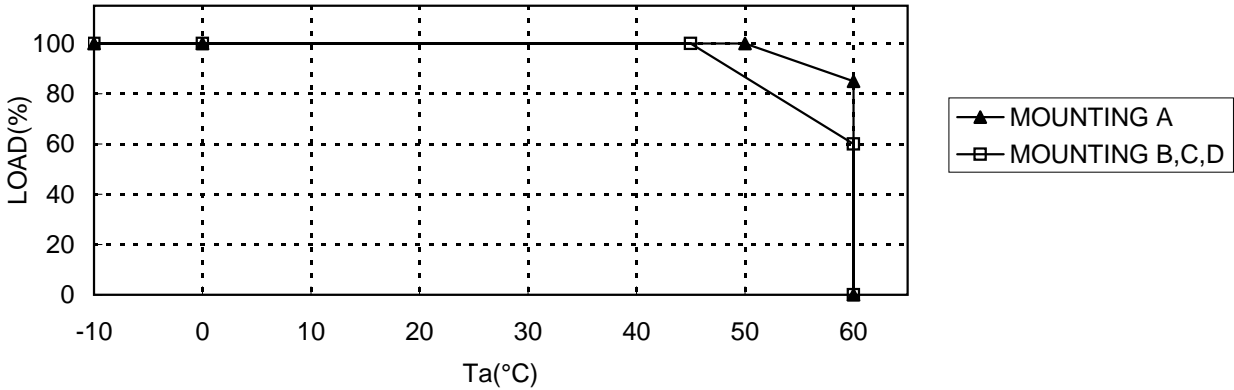


Measurement point for Vo Line/Load Regulation, and ripple and noise.

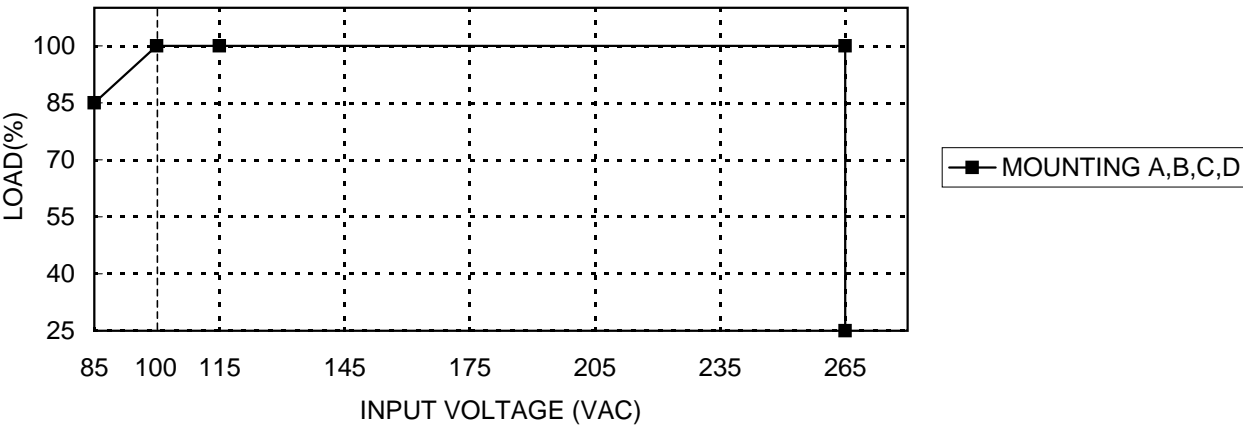
SWS50 OUTPUT DERATING

CA729-01-02A

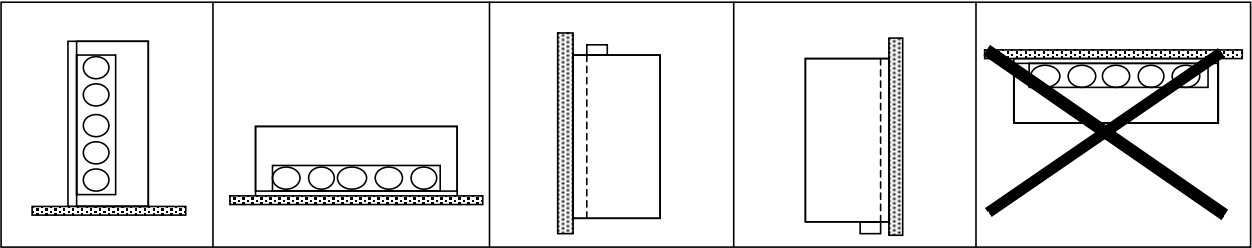
SWS50-3,5,12,15,24 OUTPUT DERATING VS Ta CURVE (CONVECTION COOLING)



SWS50-3,5,12,15,24 OUTPUT DERATING VS INPUT VOLTAGE



MOUNTING A **MOUNTING B** **MOUNTING C** **MOUNTING D** **DON'T USE**
 (STANDARD MOUNTING)



X-ON Electronics

Largest Supplier of Electrical and Electronic Components

Click to view similar products for [Switching Power Supplies](#) category:

Click to view products by [TDK-Lambda](#) manufacturer:

Other Similar products are found below :

[70841011](#) [73-551-0005](#) [AAD600S-4-OP](#) [R22095](#) [HWS50A-5/RA](#) [KD0204](#) [9021](#) [S-15F-12](#) [LDIN100150](#) [LPM000-BBAR-01](#) [LPX17S-C](#)
[EVS57-10R6/R](#) [FDC40-24S12](#) [FRV7000G](#) [22929](#) [CQM1IA121](#) [40370121900](#) [VI-PU22-EXX](#) [40370121910](#) [LDIN5075](#) [432703037161](#)
[WRB01X-U](#) [LPX140-C](#) [08-30466-1040G](#) [09-160CFG](#) [70841004](#) [70841025](#) [VPX3000-CBL-DC](#) [LPM000-BBAR-05](#) [LPM000-BBAR-08](#)
[LPM124-OUTA1-48](#) [LPM000-BBAR-07](#) [LPM109-OUTA1-10](#) [LPM616-CHAS](#) [08-30466-1055G](#) [08-30466-2175G](#) [DMB-EWG](#) [TVQF-](#)
[1219-18S](#) [6504-226-2101](#) [CQM1IPS01](#) [XPFM201A+](#) [MAP80-4000G](#) [LFP300F-24-TY](#) [SMP21-L20-DC24V-5A](#) [VI-MUL-ES](#) [08-30466-](#)
[0065G](#) [CME240P-24](#) [VI-RU031-EWWX](#) [08-30466-0028G](#) [S82Y-TS01](#)