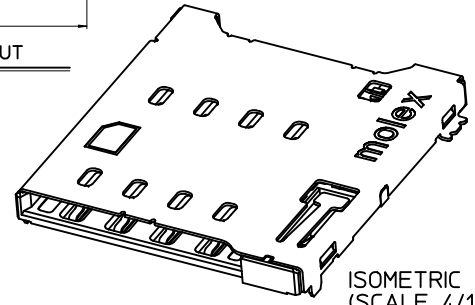


[ SIM CARD PIN-MAP ]

PIN NO.	DESCRIPTION
#1	Vcc(Supply V)
#2	RST(Reset)
#3	CLK(Clock)
#4	Reserved
#5	GND
#6	Vpp(Program V)
#7	I/O
#8	Reserved

G1~G6	GND
Detect	Card Detector
Switch	Common/GND

Card Insertion Condition	DETECT SWITCH
Without Card	Open (OFF)
Card Insertion	Close (ON)



ISOMETRIC (SCALE 4/1)

NOTES

1. MATERIALS: SEE TABLE
2. FINISHES: SEE TABLE
3. MATES WITH: MICRO SIM(UICC) CARD
4. PRODUCT SPECIFICATIONS: PS-104118-001
5. PACKING SPECIFICATIONS: PK-104118-001
6. COPLANARITY OF SOLDER TAILS: 0.1mm MAX.
7. MISALIGNMENT OF SOLDER TAIL FROM "Z" UPPER DIRECTION 0.05mm MAX., LOWER DIRECTION 0.1mm MAX.
8. CARD LOCK DIMENSION(1.1±0.15) IS WITH STANDARD CARD

NO.	PARTS NAME	MATERIALS	FINISHES
1	CONTACT TERMINAL(8P)	COPPER ALLOY	CONTACT : GOLD 0.3µm MIN. SOLDER : GOLD 0.05µm MIN. BASE : NICKEL 1.27µm MIN.
2	METAL SHELL	STAINLESS STEEL	NICKEL 1.27µm MIN.
3	HOUSING	LIQUID CRYSTAL POLYMER	UL94V-0
4	HEART CAM	LIQUID CRYSTAL POLYMER	UL94V-0
5	PIN ROD	STAINLESS STEEL	NONE
6	SPRING	STAINLESS STEEL	NONE
7	DETECT TERMINAL	PHOSPHOR BRONZE	CONTACT : GOLD 0.14µm MIN. SOLDER : TIN 1.5µm MIN. BASE : NICKEL 1.27µm MIN.
8	SWITCH TERMINAL	PHOSPHOR BRONZE	

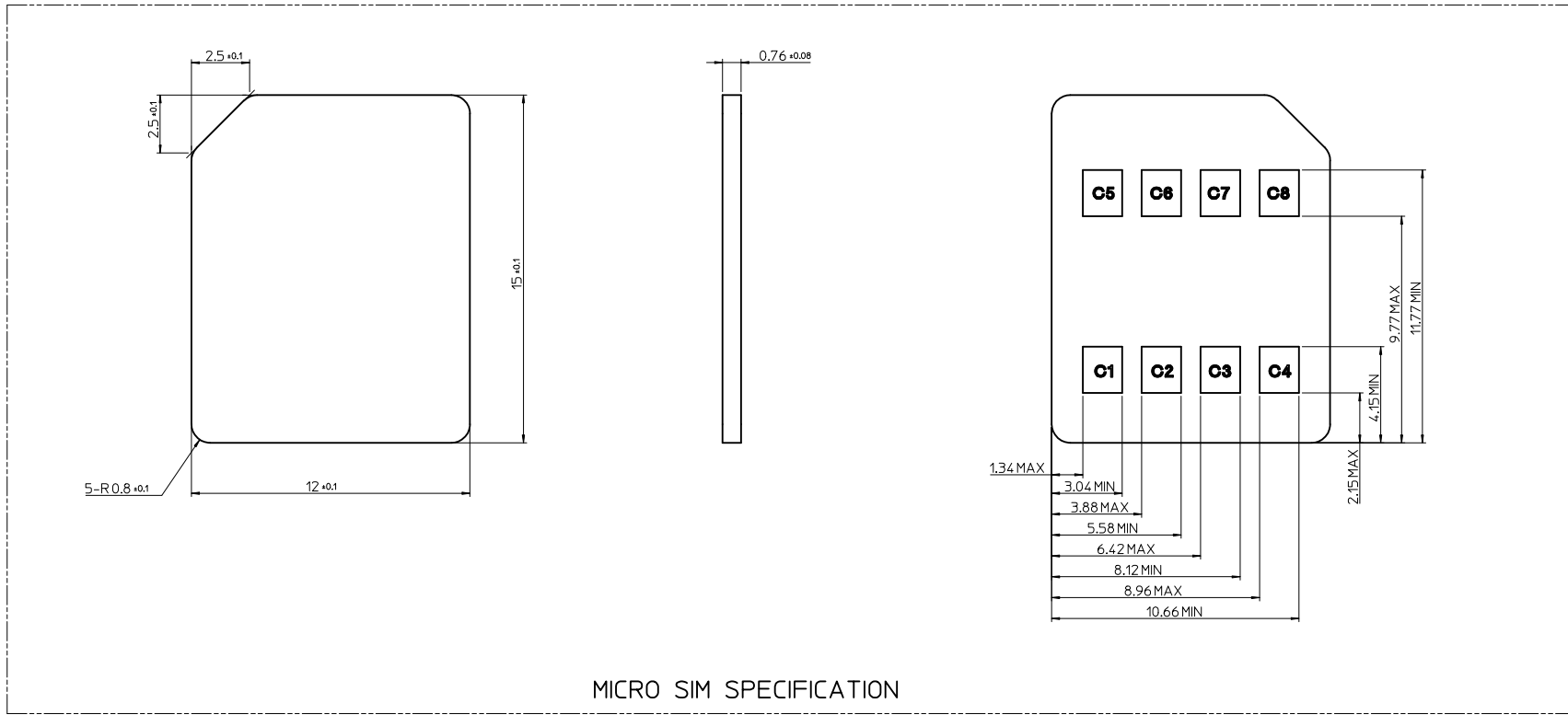
REVISED	EC NO: KOR2011-0145	2011/09/08
	DRWN: ICYANG	2011/09/08
	CHKD: YS00.KIM	2011/09/19
	APPR: YUNSIKKIM	2011/09/19
A1	REV	DESCRIPTION

QUALITY SYMBOLS	GENERAL TOLERANCES (UNLESS SPECIFIED)	
	mm	INCH
▽=0	4 PLACES ± ---	± ---
◁=0	3 PLACES ± 0.12	± ---
	2 PLACES ± 0.12	± ---
	1 PLACE ± 0.15	± ---
	ANGULAR ± 1°	
	DRAFT WHERE APPLICABLE MUST REMAIN WITHIN DIMENSIONS	

DIMENSION STYLE		SCALE
MM ONLY		5/1
DRAWN BY	DATE	TITLE
IC. YANG	2010.12.16	MICRO SIM SOCKET 1.6H PUSH-PUSH 8P
CHECKED BY	DATE	
SH. JOO	2010.12.16	
APPROVED BY	DATE	
YUNSIKKIM	2011/08/26	
MATERIAL NO.	SEE TABLE	

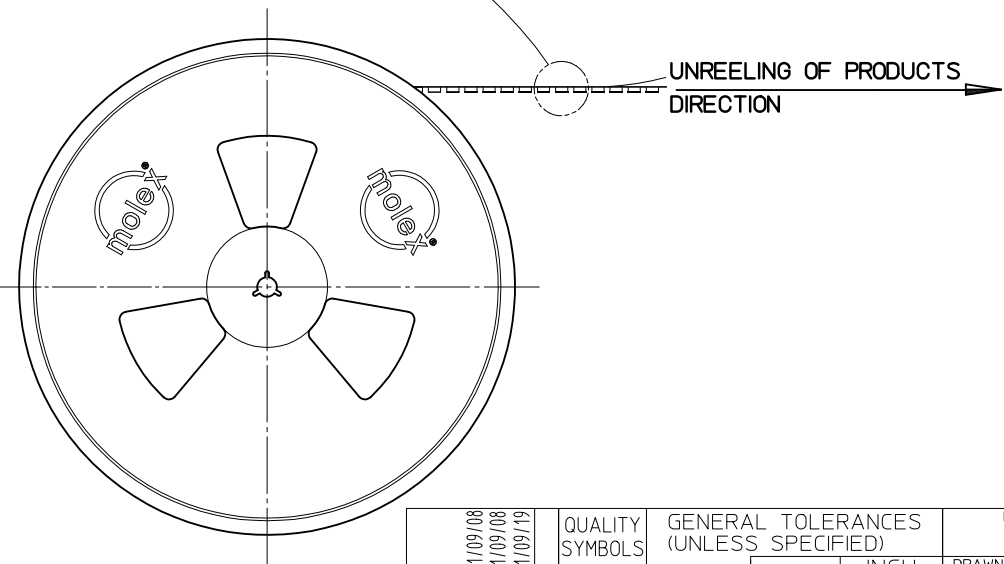
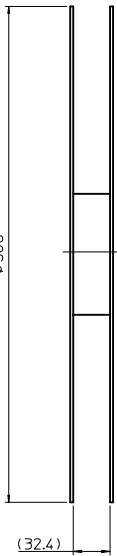
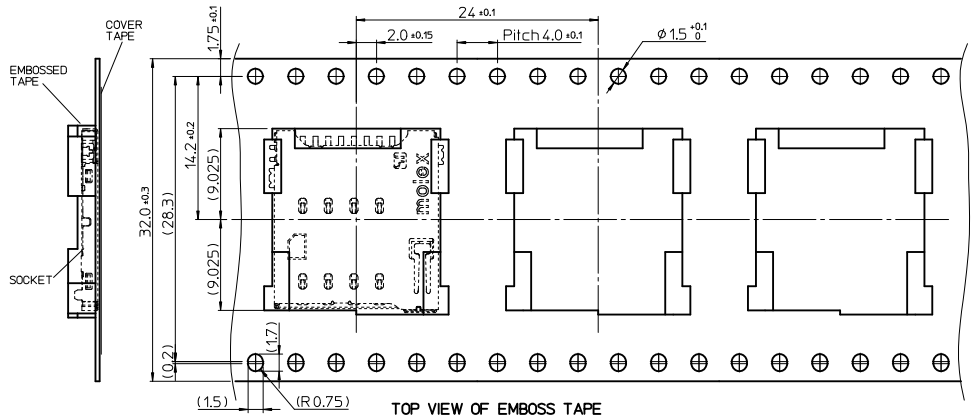
WITHOUT SWITCH TYPE	104118-0821	1041180821
WITH SWITCH TYPE	104118-0811	1041180811
SERIES DESCRIPTION	ORDER NO.	MATERIAL NO.
DESIGN UNITS METRIC		
THIRD ANGLE PROJECTION		
MOLEX INCORPORATED		
DOCUMENT NO. SD-104118-001		SHEET NO. 1 OF 3
THIS DRAWING CONTAINS INFORMATION THAT IS PROPRIETARY TO MOLEX INCORPORATED AND SHOULD NOT BE USED WITHOUT WRITTEN PERMISSION		

REFERENCE DRAWING



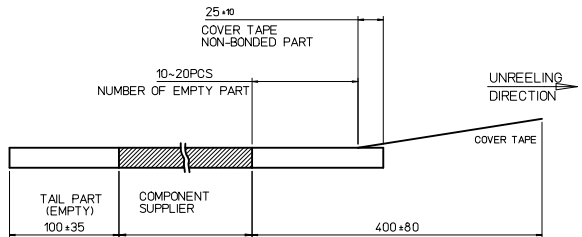
MICRO SIM SPECIFICATION

<b>NEW RELEASE</b> EC NO: KOR2011-0145 2011/09/08 DRWN: ICYANG 2011/09/08 CHKD: YS00.KIM 2011/09/08 APPR: YUNSIKKIM 2011/09/19	QUALITY SYMBOLS	GENERAL TOLERANCES (UNLESS SPECIFIED)		DIMENSION STYLE <b>MM ONLY</b>		SCALE <b>5/1</b>	DESIGN UNITS <b>METRIC</b>	THIRD ANGLE PROJECTION
	$\nabla=0$ $\square=0$	mm	INCH	DRAWN BY IC. YANG	DATE 2010.12.16	TITLE <b>MICRO SIM SOCKET 1.6H PUSH-PUSH 8P</b>		
		4 PLACES $\pm$ ---	$\pm$ ---	CHECKED BY SH. JOO	DATE 2010.12.16	MOLEX INCORPORATED		
		3 PLACES $\pm$ 0.12	$\pm$ ---	APPROVED BY YUNSIKKIM	DATE 2011/08/26	DOCUMENT NO. <b>SD-104118-001</b>	SHEET NO. <b>2 OF 3</b>	
A1	DESCRIPTION	ANGULAR $\pm 1^\circ$		MATERIAL NO. <b>SEE SHEET 1</b>		THIS DRAWING CONTAINS INFORMATION THAT IS PROPRIETARY TO MOLEX INCORPORATED AND SHOULD NOT BE USED WITHOUT WRITTEN PERMISSION		
		DRAFT WHERE APPLICABLE MUST REMAIN WITHIN DIMENSIONS						

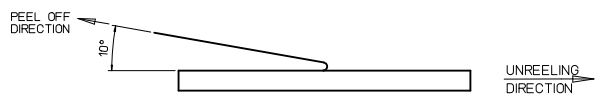


NOTES

1. QUANTITY OF PRODUCTS : 1,200 PCS / 1 REEL
2. LEAD LENGTH



3. PEELING OFF FORCE OF COVER TAPE : 0.1N~0.59N(10.2~60gf)  
(PEELING DIRECTION AS BELOW)  
- PEELING OFF SPEED : 300mm/Min.(Ref.)



4. MATERIALS OF EMOSS CARRIER AND COVER TAPE :  
PET(POLYETHYLEN TEREPHTHALATE)

<p><b>NEW RELEASE</b> EC NO: KOR2011-0145 2011/09/08 DRWN: ICYANG 2011/09/08 CHKD: YS00.KIM 2011/09/08 APPR: YUNSIKKIM 2011/09/19</p>	QUALITY SYMBOLS	GENERAL TOLERANCES (UNLESS SPECIFIED)	DIMENSION STYLE	SCALE	DESIGN UNITS	THIRD ANGLE PROJECTION															
	<p>▽=0 ∇=0</p>	<table border="1"> <tr> <th></th> <th>mm</th> <th>INCH</th> </tr> <tr> <td>4 PLACES</td> <td>± 0.12</td> <td>± 0.005</td> </tr> <tr> <td>3 PLACES</td> <td>± 0.15</td> <td>± 0.006</td> </tr> <tr> <td>2 PLACES</td> <td>± 0.20</td> <td>± 0.008</td> </tr> <tr> <td>1 PLACE</td> <td>± 0.30</td> <td>± 0.012</td> </tr> </table>		mm	INCH	4 PLACES	± 0.12	± 0.005	3 PLACES	± 0.15	± 0.006	2 PLACES	± 0.20	± 0.008	1 PLACE	± 0.30	± 0.012	MM ONLY	2/1	METRIC	
		mm	INCH																		
	4 PLACES	± 0.12	± 0.005																		
	3 PLACES	± 0.15	± 0.006																		
2 PLACES	± 0.20	± 0.008																			
1 PLACE	± 0.30	± 0.012																			
DESCRIPTION	ANGULAR ± 1 °	DRAWN BY DATE	TITLE																		
REV	DRAFT WHERE APPLICABLE MUST REMAIN WITHIN DIMENSIONS	IC.YANG 2010.12.16	MICRO SIM SOCKET 1.6H PUSH-PUSH 8P																		
A1		CHECKED BY DATE	MOLEX INCORPORATED																		
		SH. JOO 2010.12.16	DOCUMENT NO.																		
		APPROVED BY DATE	SHEET NO.																		
		YUNSIKKIM 2011/08/26	SD-104118-001																		
		MATERIAL NO.	3 OF 3																		
		SEE SHEET 1	THIS DRAWING CONTAINS INFORMATION THAT IS PROPRIETARY TO MOLEX INCORPORATED AND SHOULD NOT BE USED WITHOUT WRITTEN PERMISSION																		
		SIZE A3																			

## X-ON Electronics

Largest Supplier of Electrical and Electronic Components

*Click to view similar products for [Memory Card Connectors](#) category:*

*Click to view products by [Molex](#) manufacturer:*

Other Similar products are found below :

[M10-597810-355](#) [M21-033321-005](#) [6426-201-21343](#) [69.920.0553.0](#) [MCR60A-98D-2.54DSA\(70\)](#) [FCN-568P068-G/07-4V](#) [809180410000000](#)  
[95622-003LF](#) [DM3AT-SF-PEJM5\(41\)](#) [EN2997S72039F6](#) [N7E50-7516PG-20-WF](#) [IC11S-BUR-PNEJL\(71\)](#) [NX30TA-15PAA\(50\)](#) [21920-5](#)  
[2041353-2](#) [FUA006-3220-0](#) [33CFAE-DN](#) [MI21A-50PD-SF-EJR\(91\)](#) [502431-1011](#) [5175651-2](#) [10-247926-166](#) [EN2997S02039B8](#)  
[EN2997S61212BN](#) [EN2997S72039B6](#) [EN2997SE02039B8](#) [EN2997SE61212BN](#) [EN2997SE72039B6](#) [71-252718-32P](#) [NX1-32T-KT3K\(05\)](#)  
[95622-003LF](#) [91-570124-15P](#) [192900-0488](#) [DM1AA-SF-PEJ](#) [95079-00CALF](#) [84648-056HLF](#) [68-580163-21S](#) [33DVIR-29S12R](#)  
[SF58S006VBRR2000](#) [93-570123-08P](#) [GMC020080HR](#) [125A-78C00](#) [1010040575#](#) [MI20A-50PD-SF-EJL\(71\)](#) [KP10S-SF-PEJ\(812\)](#)  
[DM1AA-SF-PEJ\(31\)](#) [FO-10GGBLCX20-002](#) [504536-0691](#) [115S-ACA2](#) [115S-ACA3](#) [115S-BS00](#)