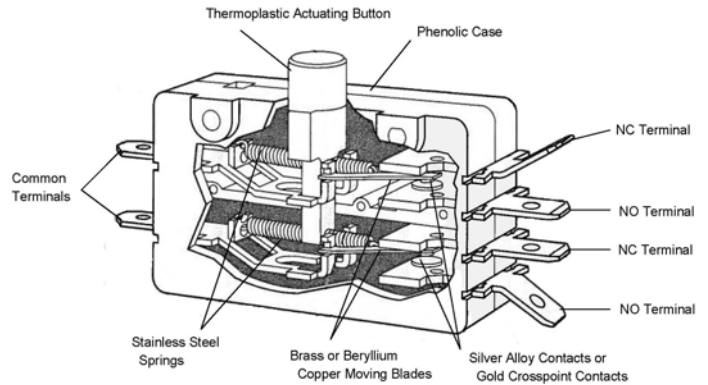


GENERAL PURPOSE – DOUBLE POLE E Series



Features

- Choice of 5 contact ratings
- Long life coil spring, snap action mechanism
- High Temperature 150°C & 200°C versions available
- RoHS Compliant

Electrical Ratings and Operating Life

| According to UL1054 | | |
|----------------------|---|-----------------------------------|
| Switch Series | Nominal Load | Operation cycles (Min operations) |
| G20 | 0.1A 125VAC | 6000* |
| E19 | 15A, 125/250VAC; 3/4HP 125VAC | 6000* |
| E19A (Mixed ratings) | 15A 125/250VAC 3/4HP, 125VAC, 1 1/2HP 250VAC, 0.1A 125VAC | 6000 |
| E20 | 20A, 125/250VAC, 1HP 125VAC, 2HP 250VAC | 6000 |
| E25 | 25A 125/250VAC; 1HP 125VAC | 6000 |
| E28 | 30.1A 125/250/277 VAC UL Approved Only – Resistive Load Only | 6000 |

* Extended life 105°C UL versions available. Contact factory for more information. Special part number required.

| Technical Specifications | | Material Specifications | |
|-----------------------------|---|-----------------------------------|--|
| Temperature Ratings: | -40°C to 105°C (G20, E19, E19A, E20, E25) -40°C to 85°C (E28) 150°C & 200°C optional (E19, E20) | Case: | General Purpose Phenolic |
| | | Actuator button: | Thermoplastic Nylon |
| Flammability Rating: | UL94HB | Common Terminal: | Brass: E19, E19A, G20 Silver Plated Brass: E20 Silver Plated Copper: E28 |
| | | NO and NC Terminals: | Brass: E19, E19A, G20 Copper: E20, E25, E28 |
| Terminals: | 0.250" x 0.032" (6.35mm x 0.81mm) | Moving Blade: | Brass: E19, E19A, G20 Silver Plated Beryllium Copper: E20, E25, E28 |
| | | Spring: | Stainless Steel |
| CSA File Number: | 16503 | Auxiliary Actuator Roller: | Cold-Rolled Stainless Steel (Nickel Plated) Sintered Stainless Steel |
| UL File Number: | E23301 | Contacts: | Silver-CdO: E19, E19A, E20, E25, E28 Gold Crosspoint: G20, E19A |

Specifications subject to change



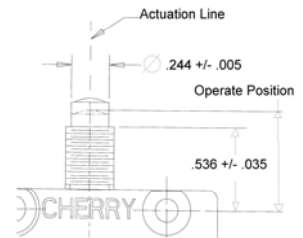
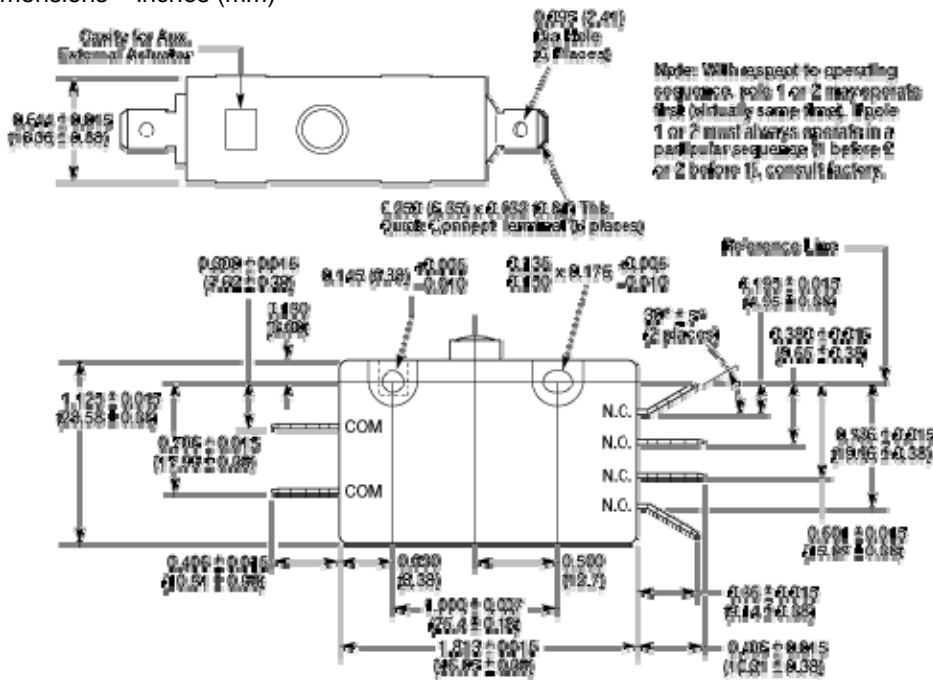
E25 only
T200 E19 and E20



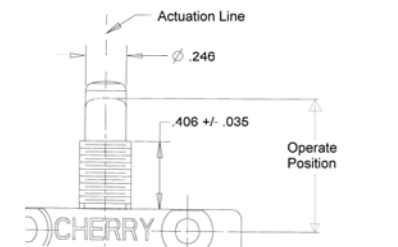
GENERAL PURPOSE – DOUBLE POLE

E Series

Dimensions – inches (mm)



-00J (White plastic button)



-00M (Metal cap over button)

Commonly Stocked Distributor Items / Preferred Part Numbers

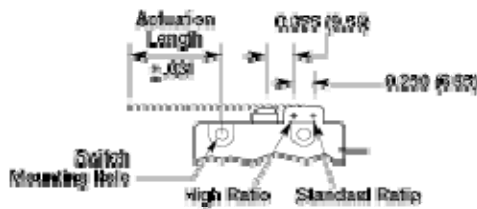
| Item Number | EN Rating | UL Rating | Maximum Pretravel inches (mm) | Operating Point inches (mm) | Minimum Overtravel inches (mm) | Each Pole Max. Movement Differential inches (mm) | Maximum Operating Force (grams) | Actuation Length inches (mm) |
|-------------|-----------|---|-------------------------------|-------------------------------------|--------------------------------|--|---------------------------------|------------------------------|
| 0E1900A0 | N/A | 15A, 125/250VAC; 3/4HP 125VAC 1 1/2HP 250VAC | 0.050 (1.27) | 0.285 +/- 0.030 (7.24 +/- 0.75) | 0.080 (2.03) | 0.015 (0.38) | 850 | N/A |
| 0E1900H0 | N/A | 15A, 125/250VAC; 3/4HP 125VAC 1 1/2HP 250VAC | 0.275 (6.99) | 0.312 +/- 0.062 (7.92 +/- 1.57) | 0.100 (2.54) | 0.093 (2.36) | 205 | 1.50 (38.10) |
| 0E1900J0 | N/A | 15A, 125/250VAC; 3/4HP 125VAC 1 1/2HP 250VAC | 0.050 (1.27) | 0.670 +/- 0.030 (17.02 +/- 0.76) | 0.080 (2.03) | 0.015 (0.38) | 850 | N/A |
| 0E1900K0 | N/A | 15A, 125/250VAC; 3/4HP 125VAC 1 1/2HP 250VAC | 0.250 (6.36) | 0.718 +/- 0.062 (18.24 +/- 1.57) | 0.187 (4.75) | 0.093 (2.36) | 212 | 1.750 (44.45) |
| 0E1900M0 | N/A | 15A, 125/250VAC; 3/4HP 125VAC 1 1/2HP 250VAC | 0.050 (1.27) | 0.812 +/- 0.030 (20.62 +/- 0.76) | 0.218 (5.54) | 0.015 (0.38) | 850 | N/A |
| 0E1950H0 | N/A | 15A, 125/250VAC; 3/4HP 125VAC 1 1/2HP 250VAC | 0.400 (10.16) | 0.281 +/- 0.062 (7.14 +/- 1.57) | 0.187 (4.75) | 0.140 (3.56) | 130 | 1.750 (44.45) |
| 0E1950K0 | N/A | 15A, 125/250VAC; 3/4HP 125VAC 1 1/2HP 250VAC | 0.312 (7.92) | 0.687 +/- 0.062 (17.45 +/- 1.57) | 0.187 (4.75) | 0.140 (3.56) | 150 | 1.625 (41.28) |
| 0E2000A0 | N/A | 20A, 125/250VAC; 1HP 125VAC, 2HP 250VAC | 0.100 (2.54) | 0.248 +/- 0.030 (6.30 +/- 0.76) | 0.050 (1.27) | 0.015 (0.38) | 1280 | N/A |
| 0E2000H0 | N/A | 20A, 125/250VAC; 1HP 125VAC, 2HP 250VAC | 0.330 (8.38) | 0.468 +/- 0.062 (11.89 +/- 1.57) | 0.156 (3.96) | 0.050 (1.27) | 425 | 0.821 (20.85) |
| 0E2000K0 | N/A | 20A, 125/250VAC; 1HP 125VAC, 2HP 250VAC | 0.348 (8.84) | 0.860 +/- 0.062 (21.84 +/- 1.57) | 0.156 (3.96) | 0.045 (1.14) | 425 | 0.688 (17.48) |
| 0E2000M0 | N/A | 20A, 125/250VAC; 1HP 125VAC, 2HP 250VAC | 0.100 (2.54) | 0.774 +/- 0.030 (19.66 +/- 0.76) | 0.188 (4.78) | 0.015 (0.38) | 1280 | N/A |
| 0E2050H0 | N/A | 20A, 125/250VAC; 1HP 125VAC, 2HP 250VAC | 0.600 (15.24) | 0.427 +/- 0.062 (11.10 +/- 1.57) | 0.156 (3.96) | 0.080 (2.03) | 285 | 1.071 (27.20) |
| 0E2050K0 | N/A | 20A, 125/250VAC; 1HP 125VAC, 2HP 250VAC | 0.625 (13.34) | 0.828 +/- 0.062 (21.03 +/- 1.57) | 0.146 (3.71) | 0.075 (1.91) | 312 | 0.951 (24.16) |



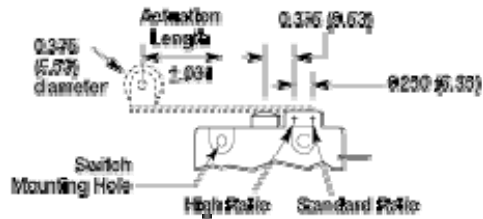
GENERAL PURPOSE – DOUBLE POLE

E Series

Actuator Details



Flat Actuator Version (-00H and -50H)



Roller Actuator Version (-00K and -50K)

“J” and “M” Type Optional Hardware

| | |
|-------------------------------|-----------|
| Brass Hex Nut | 0012-0023 |
| Brass Hex Nut (Nickel Plated) | 0012-0028 |

Mounting

Recommended mounting screw: #6-32 round head.
 Recommended torque on screw: 6 inch-lbs. max.
 Recommended torque on ferrule: 20 inch lbs. max.

Ordering Information

| | | |
|-----------------------------------|--|------------------|
| Select the desired contact rating | Combine with the button/actuator style | Full part number |
| E19 | 50H | E19-50H |

For single throw versions:

| | | | |
|-----------------------------------|-------------------------------|-------------------------------------|--------------------------------------|
| Select the desired contact rating | Combine with the button style | DPST – NO | DPST - NC |
| E19 | 50H | E19-51H (Add 1 to suffix) | 0E19-52H (Add 2 to suffix) |

Contact

Call, fax or visit our Website for more information.

**ZF Electronic Systems
 Pleasant Prairie, LLC**
 11200 88th Avenue
 Pleasant Prairie, WI 53158

Phone: 262.942.6500
 Web: www.cherrycorp.com
 Email: cep_sales@zf.com
 Fax: 262.942.6566

The manufacturer accepts no liability for errors or non-availability, and reserves the right to change specifications without prior notice.

Technical data relates to product specifications only. Features may differ from those described. Only drawings combined with product specifications shall be deemed binding.

© 2007 ZF Electronics Corporation

Last Updated: 03/22/13

X-ON Electronics

Largest Supplier of Electrical and Electronic Components

Click to view similar products for [Basic / Snap Action Switches](#) category:

Click to view products by [ZF Cherry](#) manufacturer:

Other Similar products are found below :

[83228001](#) [01.098.1358.1](#) [602EN1-6B](#) [602EN532](#) [602EN535-RB](#) [602HE5-RB1](#) [604HE162](#) [604HE223-6B](#) [624HE17-RB](#) [6HM89](#) [6PA78-JM](#)
[6SE1](#) [6SX1-H58](#) [70500840](#) [MBD5B1](#) [MBH2731](#) [73-316-0012](#) [79211759](#) [79211923](#) [79218589](#) [7AS12](#) [ML-1155](#) [ML-1376](#) [831010C3.0](#)
[831060C3.TL](#) [831090C2.EL](#) [83131904](#) [84212012](#) [8AS239](#) [8HM73-3](#) [903VB1-PG](#) [914CE1-6G](#) [PL-100](#) [11SM1077-H4](#) [11SM1077-H58](#)
[11SM1-TN107](#) [11SM405](#) [11SM703-T](#) [11SM8423-H2](#) [11SX37-T](#) [11SX48-H58](#) [11SX55-H58](#) [11SM2442-T](#) [11SM76-T](#) [11SM77-H58](#)
[11SM77-T](#) [11SM863-T](#) [11SM866](#) [11SX47-H58](#) [A7CN-1M-1-LEFT](#)