

## Cable sockets and plugs with molded-on lead, snap locking

### Product features

- connection of
  - inductive or capacitive proximity switches
  - limit switch connection etc.

### Variations

- cable sockets without LED (housing black, cable black)
- cable sockets with LED (housing transparent, cable black)
- cable plug with snap locking or screw locking

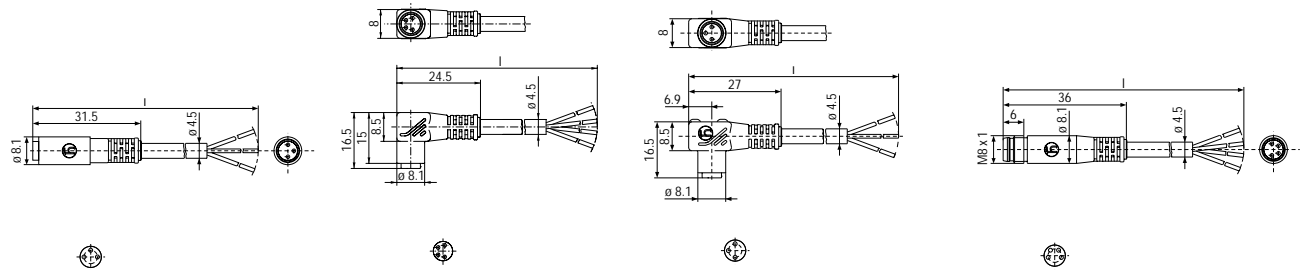
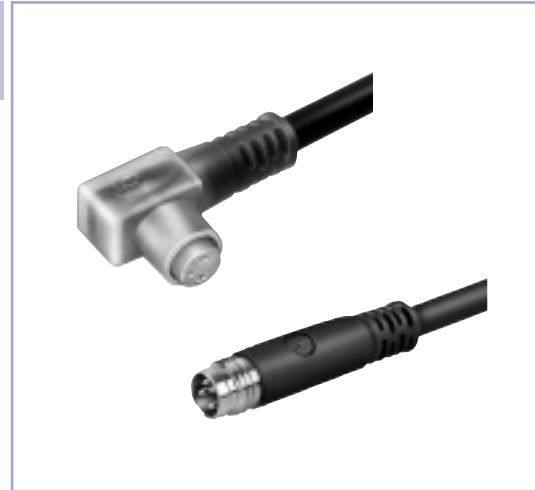
### Basic data

- protection class IP 67 (IEC 60529)
- high flexible lead
- conductor color identification complies with European standards (EN 50044)

### Further information

see technical data in the catalog  
Circular connectors for automation technique DS 280 490-450.

**For tailor-made systems,** see page 6



ELKA-K...

ELWIKA-K...

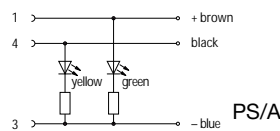
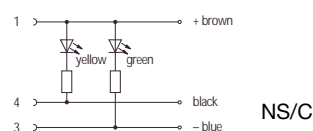
ELWIKA-K... NS/C  
PS/A

ELST-K...

poles	cable material	length	socket		plug straight ELST-K	operating voltage	componentry (cable sockets with LED)	
			straight ELKA-K	angled ELWIKA-K				
3	3308	PUR	2 m	933 669-021	933 665-021	UC 60 V (≈)		
			5 m	933 669-022	933 665-022			
		PVC	2 m	933 661-041	933 657-041			
			5 m	933 661-042	933 657-042			
	3308 NS/C	PUR	2 m		933 667-021	DC 10...30 V (=)		NPN normally open LED green / LED yellow
		PVC	2 m		933 659-041			
3308 PS/A	PUR	2 m		933 668-021	DC 10...30 V (=)	PNP normally open LED green / LED yellow		
		5 m		933 668-022				
	PVC	2 m		933 660-041				
		5 m		933 660-042				
4	4408	PUR	2 m	933 670-021	933 666-021	UC 60 V (≈)		
			5 m	933 670-022	933 666-022			
		PVC	2 m	933 662-041	933 658-041			
			5 m	933 662-042	933 658-042			
	4408	PUR	2 m	933 672-021	933 672-021	UC 60 V (≈)		
			5 m	933 672-022	933 672-022			
4408	PVC	2 m	933 664-041	933 664-041	UC 60 V (≈)			
		5 m	933 664-042	933 664-042				

**Example for placing orders:** 933 668-021 ELWIKA-K 3308 PS/A PUR 025 2 m

### Componentries (cable sockets with LED)



## Cable sockets and plugs with molded-on lead



### Product features

- connection of
  - inductive or capacitive proximity switches
  - photoelectric barriers
  - pressure-operated switches etc.

### Variations

- cable sockets and plugs without LED (housing black, cable black)
- cable sockets with LED (housing transparent, cable black)

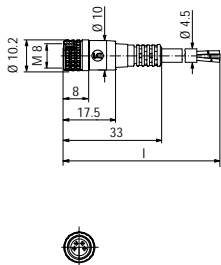
### Basic data

- protection class IP 68 (IEC 60529)
- high flexible lead
- conductor color identification complies with European standards (EN 50044)

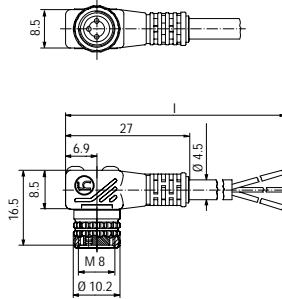
### Further information

see technical data in the catalog Circular connectors for automation technique DS 280 490-450.

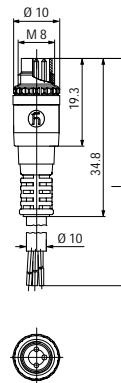
**For tailor-made systems,** see page 6



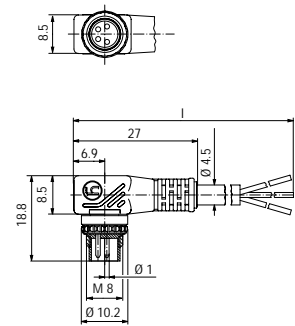
ELKA-KV...



ELWIKA-KV...



ELST-KV...

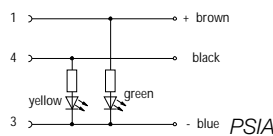
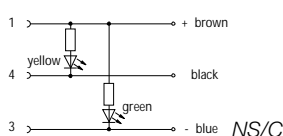


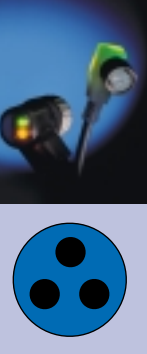
ELWIST-KV...

poles	cable material	length	socket		plug		operating voltage	componentry (cable sockets with LED)			
			straight ELKA-KV	angled ELWIKA-KV	straight ELST-KV	angled ELWIST-KV					
3	3308	PUR	2m	933 357-021	933 353-021	933 346-021	933 373-021	UC 60 V (≈)			
			5m	933 357-022	933 353-022	933 346-022	933 373-022				
	PVC	2m	933 151-041	933 140-041	933 345-041	933 372-041					
		5m	933 151-042	933 140-042	933 345-042	933 372-042					
	3308 NS/C	PUR	2m		933 354-021					DC 10...30 V (=)	NPN normally open LED green / LED yellow
		PVC	2m		933 144-041						
		5m		933 144-042							
3308 PS/A	PUR	2m		933 355-021			DC 10...30 V (=)	PNP normally open LED green / LED yellow			
		5m		933 355-022							
	PVC	2m		933 143-041							
		5m		933 143-042							
4	4408	PUR	2m	933 358-021	933 356-021	933 348-021	933 375-021	UC 60 V (≈)			
			5m	933 358-022	933 356-022	933 348-022	933 375-022				
	PVC	2m	933 152-041	933 145-041	933 347-041	933 374-041					
		5m	933 152-042	933 145-042	933 347-042	933 374-042					

**Example for placing orders:** 933 355-021 ELWIKA-KV 3308 PS/A PUR 025 2 m

### Componentries (cable sockets with LED)





Cable sockets and plugs for self-assembly

**Product features**

- connection of
  - inductive or capacitive proximity switches
  - photoelectric barriers
  - pressure-operated switches etc.

**Variations**

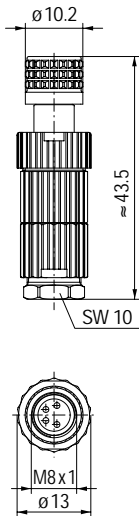
- cable sockets and connectors

**Basic data**

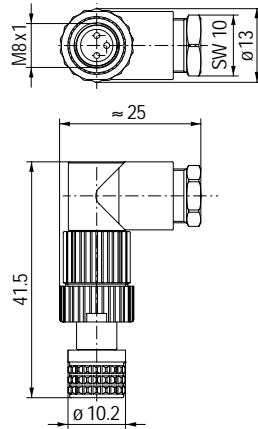
- protection class IP 67 (IEC 60529)
- strain relief by means of clamping cage
- type of termination pin penetration

**Further information**

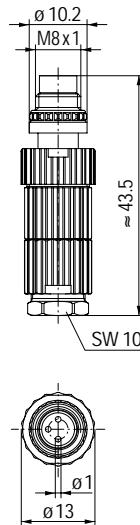
see technical data in the catalog Circular connectors for automation technique DS 280 490-450.



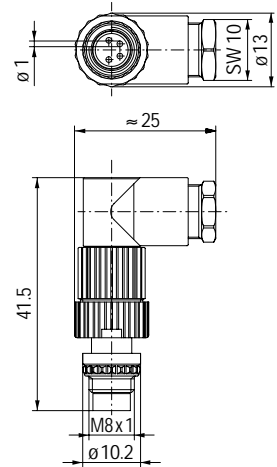
ELKA...



ELWIKA...



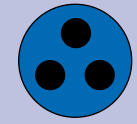
ELST...



ELWIST...

poles		socket		plug		operating voltage
		straight ELKA	angled ELWIKA	straight ELST	angled ELWIST	
3	3008 V	933 366-100	933 368-100	933 406-100	933 408-100	UC 60 V (≈)
4	4008 V	933 367-100	933 369-100	933 407-100	933 409-100	UC 60 V (≈)

**Example for placing orders:** 933 366-100 ELKA 3008 V



## Appliance sockets and connectors for front panel mounting

### Product features

Installation of controls etc. in housing

### Variations

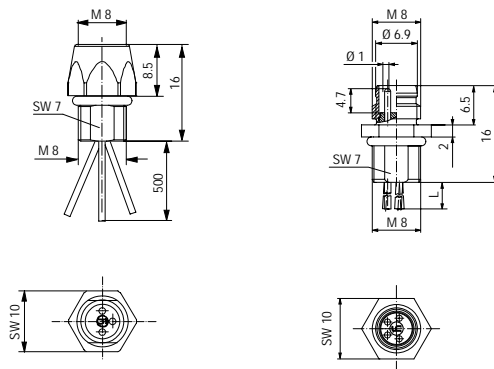
- appliance sockets for self-assembly with wire ends
- appliance connectors for self-assembly with wire ends, snap locking or screw locking.

### Basic data

- protection class IP 68 (IEC 60529) (protection class IP 67 with snap locking)
- conductor color identification complies with European standards (EN 50044)

### Further information

see technical data in the catalog  
Circular connectors for automation technique  
DS 280 490-450.

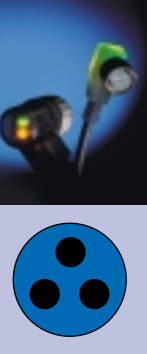


ELKE... V FM8 05

ELST... V FM8 05

poles		socket ELKE contacts gold-plated	plug ELST contacts gold-plated	operating voltage
3	3308 V FM8 05	933 383-100	933 146-001	UC 60 V (≈)
4	4408 V FM8 05	933 382-100	933 147-001	UC 60 V (≈)

**Example for placing orders:** 933 383-100 ELKE 3308 V FM8 05



## Appliance connectors for press-in fit

### Product features

Installation of proximity switches, photoelectric cells, etc. in sensor tubes (press-fit installation)

### Variations

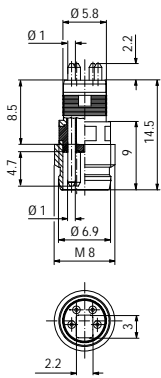
- Appliance connectors with aperture for mini-LED (display window), snap or screw locking
- appliance connectors, snap or screw locking

### Basic data

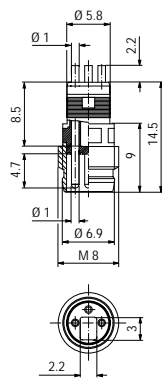
- protection class IP 67 (IEC 60529)
- type of connection solder (hollow pins or solid pins)

### Further information

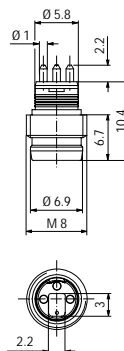
see technical data in the catalog  
Circular connectors for automation technique  
DS 280 490-450.



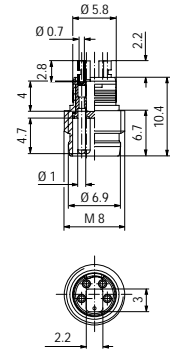
ELST... RV LM



ELST... RV LH



ELST... RV KM



ELST... RV KH

poles	plug	operating voltage	comments
	ELST contacts gold-plated		
3	3308 RV LH 3308 RV LM 3308 RV KH 3308 RV KM	933 153-001 933 154-001 933 392-001 933 391-001	UC 60 V (≈) hollow pins, aperture for mini-LED (display window) solid pins, aperture for mini-LED (display window) hollow pins solid pins
4	4408 RV LH 4408 RV LM 4408 RV KH 4408 RV KM	933 158-001 933 159-001 933 394-001 933 393-001	UC 60 V (≈) hollow pins, aperture for mini-LED (display window) solid pins, aperture for mini-LED (display window) hollow pins solid pins

## X-ON Electronics

Largest Supplier of Electrical and Electronic Components

*Click to view similar products for [hirschmann](#) manufacturer:*

Other Similar products are found below :

[931298001 GSP 211 PG11](#) [934828001 BRSCIS 4D/9](#) [930011200 MAB 6](#) [932326100 CA 6 GS](#) [G 30 KW 3 M](#) [831530400 CA 00 SD 1](#)  
[934077105](#) [934066788](#) [934061103](#) [934059104](#) [930046100](#) [975090703](#) [943301-001](#) [934061704](#) [STAK2](#) [PRUEF1SW](#) [SPIDER-PL-20-](#)  
[05T1999999TZ9HHHH](#) [BAT867-RUSW99AU999AT199L999ZHX](#) [930136106](#) [930317804](#) [934066105](#) [934076103](#) [934086104](#) [934086188](#)  
[973929000](#) [934157101](#) [934077106](#) [934064104](#) [932794001](#) [973601101](#) [GECKO 4TX](#) [972309101](#) [934100707](#) [975455709](#) [975455701](#)  
[973528101](#) [931297006](#) [MESAP 43650](#) [932140100](#) [STAK 3 N SCHWARZ](#) [932507005](#) [XZC 0704](#) [975694707](#) [MLSWG100/2.5RT](#) [BAT867-](#)  
[RUSW99CU999AT199L999ZHX](#) [934081100](#) [934089101](#) [934090100](#) [973929001](#) [975017701](#) [975106101](#) [934157100](#)