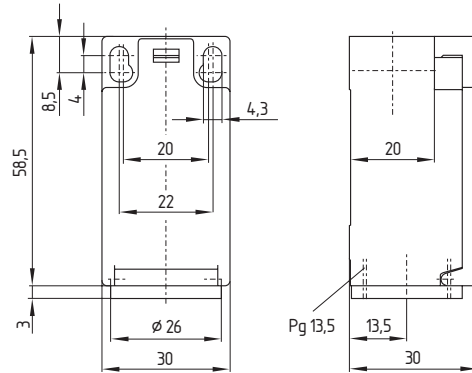



3. Position switches with safety function / Class 1

3.2 Z/T 236 range



Features

- Thermoplastic enclosure
- Double insulated 
- Available with 2 positive break NC contacts
- Snap action with constant contact pressure up to switching point
- Slow action available with overlapping or staggered contacts
- Wiring compartment
- Wide range of alternative actuators
- Actuator heads can be repositioned in steps 4 x 90°
- Angle of roller lever adjustable in 10° steps
- Good resistance to oil and petroleum spirit

Info

- Available with M 12 plug (A-coding), ordering suffix -ST
- Available with M 12 plug (B-coding), ordering suffix -2310
- Cable entry Pg 11, ordering suffix -1946
- Enclosure with transversely slotted mounting holes, ordering suffix -1297
- Cable entry 1/2" NPT, ordering suffix -NPT
- Cable entry M 20 x 1.5, ordering suffix -M20
- Gold-plated contacts (0.3 µm), ordering suffix -1637
- Metal rollers on enquiry

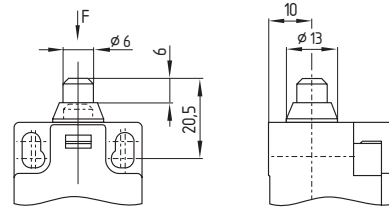
Ordering details

Position switch with safety function / class 1 series Z/T 236 with offset roller lever K with slow action with two NC contacts and cable entry Pg 11: TK 236-02z-1946

3. Position switches with safety function / Class 1
3.2 Z/T 236 range



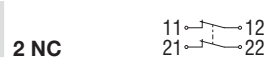
Plunger S



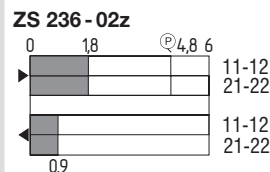
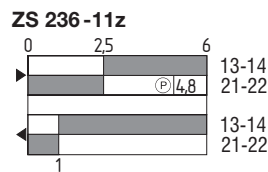
Features

- Actuator type B to EN 50047
- Actuating force: Min. 9 N
- Positive break force: 19 N
- Actuating speed with actuating angle 0° to switch axis
 Snap action:
 Min. 10 mm/min, max. 1 m/s
 Slow action:
 Min. 60 mm/min, max. 1 m/s
- Available latching in actuated position on snap action versions

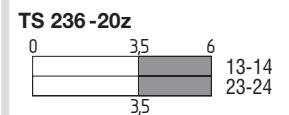
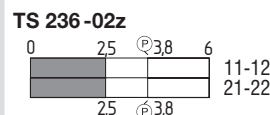
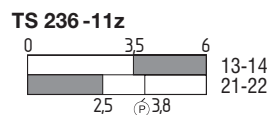
**Contacts/
Switch travel**



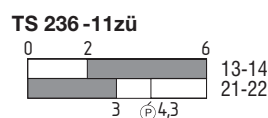
Snap action



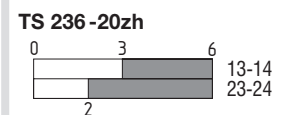
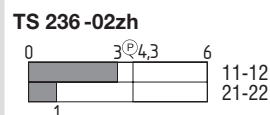
Slow action



Slow action,
overlapping contacts



Slow action,
staggered contacts



3. Position switches with safety function / Class 1

3.9 Technical data

	Z/T 235	Z/T 236	ES/EM 95
Standards:	IEC/EN 60947-5-1; EN 1088; BG-GS-ET-15		
Design:	EN 50047		
Enclosure material:	Zinc diecasting, chromated, enamelled	Glass-fibre reinforced thermoplastic, self-extinguishing	
Protection class:	IP 67 to IEC/EN 60529/DIN VDE 0470-1		
Contact material:	Silver		
Contact type:	Change-over with double break Zb or 2 NC contacts, with galvanically separated contact bridges NC contacts with positive break		
Switching system:	⊖ IEC 60947-5-1; ⊕ BG-GS-ET-15; slow or snap action, NC contacts with positive break Snap action Z or slow action T Snap action EM or slow action ES		
Termination:	Screw terminals for max. 2.5 mm ² cables (including conductor ferrules)		
Rated impulse			
withstand voltage U _{imp} :	6 kV		
Rated insulation voltage U _i :	500 V		
Thermal test current I _{th} :	10 A		
Utilisation category:	AC-15; DC-13		
Rated operating			
current/voltage I _e /U _e :	4 A/230 VAC; 2.5 A/400 VAC; 1 A/500 VAC; 1 A/24 VDC		
Max. fuse rating:	10 A (slow blow); 16 A (quick blow), 6 A (slow blow) as positive break position switch		
Ambient temperature:	- 30 °C ... + 80 °C		ES 95: - 20 °C ... + 65 °C; EM 95: - 30 °C ... + 80 °C
Mechanical life:	20 million operations		10 million operations
Switching frequency:	Max. 5,000/h		Max. 3,600/h
Switching point accuracy:	-		
Actuating speed:**	Z 235: Min. 10 mm/min T 235: Min. 60 mm/min	Z 236: Min. 10 mm/min T 236: Min. 60 mm/min	ES 95: Min. 10 mm/min EM 95: Min. 60 mm/min
Contact break for			
complete stroke:	Z 235: 2 x 2 mm T 235: 2 x 3.5 mm	Z 236: 2 x 2 mm T 236: 2 x 3.5 mm	ES 95: > 2 x 1.25 mm EM 95: min. 2.3 mm, max. 2 x 4.5 mm
Bounce duration:	Z 235: < 3 ms T 235: *	Z 236: < 3 ms T 236: *	ES 95: < 3 ms EM 95: *
Switchover time:	Z 235: > 5.5 ms T 235: *	Z 236: > 5.5 ms T 236: *	ES 95: > 5.5 ms EM 95: *
Positive break force:	See switch description		-
Positive break stroke:	See switch description		-



* In accordance with actuating speed

** For the switch plunger

X-ON Electronics

Largest Supplier of Electrical and Electronic Components

Click to view similar products for [Limit Switches](#) category:

Click to view products by [Schmersal](#) manufacturer:

Other Similar products are found below :

[6LS2-4PG](#) [5ML1-E1](#) [5ML31](#) [LZG1](#) [LZL1-6C](#) [622EN114-R](#) [622EN18-6](#) [622EN224-6B](#) [622EN230](#) [622EN237-R](#) [622EN69-3](#) [622EN85-RB](#)
[MA-10019](#) [6PA109](#) [7LS51](#) [83547001](#) [83725002](#) [83830001](#) [83840001](#) [83840701](#) [83841001](#) [83870104](#) [83881140](#) [8AS42](#) [8LS10](#) [8LS125-](#)
[4PG](#) [8LS152-4PGN20](#) [914CE16-3A](#) [914CE16-AQ](#) [914CE3-3L1](#) [915PA10](#) [91MCE16-P2O](#) [924CE16-Y3](#) [924CE1-S6](#) [924CE1-T25A](#)
[924CE1-T3](#) [924CE1-T9A](#) [924CE2-T9](#) [924CE31-Y20-X5](#) [924CE31-Y3L1](#) [GL-10054](#) [GL-85710](#) [GL-85714](#) [GLAB26J2B](#) [GLDB03C-6](#)
[GLZ324](#) [PS21R-NT11N7-YK0](#) [D4A-1106N](#) [D4A1201N](#) [D4A-3E02N](#)