

TREADLITE II FOOTSWITCH



Treadlite II Footswitch

Environmental Ratings:

EN 60529 Degree of Protection IP20

EN 60529 Degree of Protection IP68

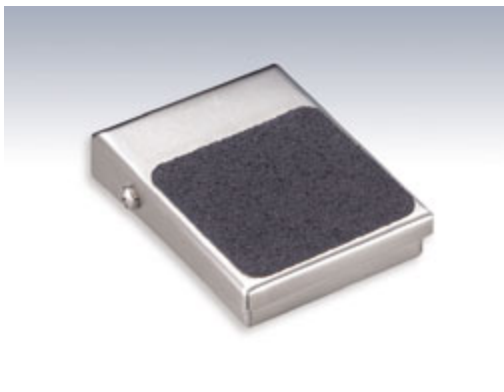
(For Stainless Steel models: T-91-SWANOS, T-91-SWANO3S and T-91-SWANO38S)

Key Benefits

This foot switch has a handsome steel housing that is painted black with nonskid base pad and foot treadle pad. The low profile and light pressure required to operate reduces operator fatigue. The Maintained Contact version incorporates a positive over center rocker type action.

Size: 3-1/2" x 2-5/8" x 1"

Weight: 7 oz.



Treadlite II Stainless Steel Footswitch

The TWIN T-91-SC48 foot switch consists of two single models mounted on a single cast aluminum base with a divider bar between pedals which helps prevent accidental operation of both foot switches at one time.

Size: 7-15/16" x 5-9/16" x 1-3/8"

Weight: 4 lbs.

- *Special Twin, Triple and Quad baseplates with wiring channel available on special order.*

The T-91-SWANOS, T-91-SWANO3S and T-91-SWANO38S models have formed stainless steel housings. The three models also meet the requirements of IP68 as well as NEMA and UL Enclosure Types 1, 4X, 6 & 6P.

SPECIFICATIONS

(Special variations are available to the O.E.M. on special order on the models listed below)

⚠ WARNING

	CATALOG NUMBER	DESCRIPTION	CIRCUIT	FORM	ELECTRICAL RATINGS
	T-91-S	Momentary	SPDT	C	15 A 125-250 VAC 1/2 H.P. 125-250 VAC
	TWIN T-91-S	Momentary	Each Side SPDT	C	
	T-91-D	Maintained	SPDT	C	
	T-91-SC36*	Momentary	SPDT Wired N.O.	A	10 A 125-250 VAC 1/2 H.P. 125-250 VAC
	T-91-DC36*	Maintained	SPDT Wired N.O.	A	
	T-91-SC36A**	Momentary	SPDT Wired N.O.	A	15 A 125-250 VAC 1/2 H.P. 125-250 VAC
	Twin T-91-SC48***	Momentary	Both Sides SPDT Wired N.O.	A	13 A 125-250 VAC 1/2 H.P. 125-250 VAC
	T-91-SC3±	Momentary	SPDT Wired N.O.	A	10 A 125 VAC

	T-91-DC3±	Maintained	SPDT Wired N.O.	A	1/2 H.P. 125 VAC
	T-91-SC3A±±	Momentary	SPDT Wired N.O.	A	15 A 125 VAC 1/2 H.P. 125 VAC
	T-91-PS±±±	Momentary	SPST Wired N.O.	A	3 A 30 VAC Max. Class 2 Circuits Only
	T-91-PSNC±±±	Momentary	SPST Wired N.C.	B	
	T-91-SWANOS°	Momentary	SPST N.O.	A	3 A 125-250 VAC
	T-91-SWANO3S°°	Momentary	SPST Wired N.O.	A	3 A 125 VAC
	T-91-SWANO38S°°°	Momentary	SPST Wired N.O.	A	3 A 125-250 VAC

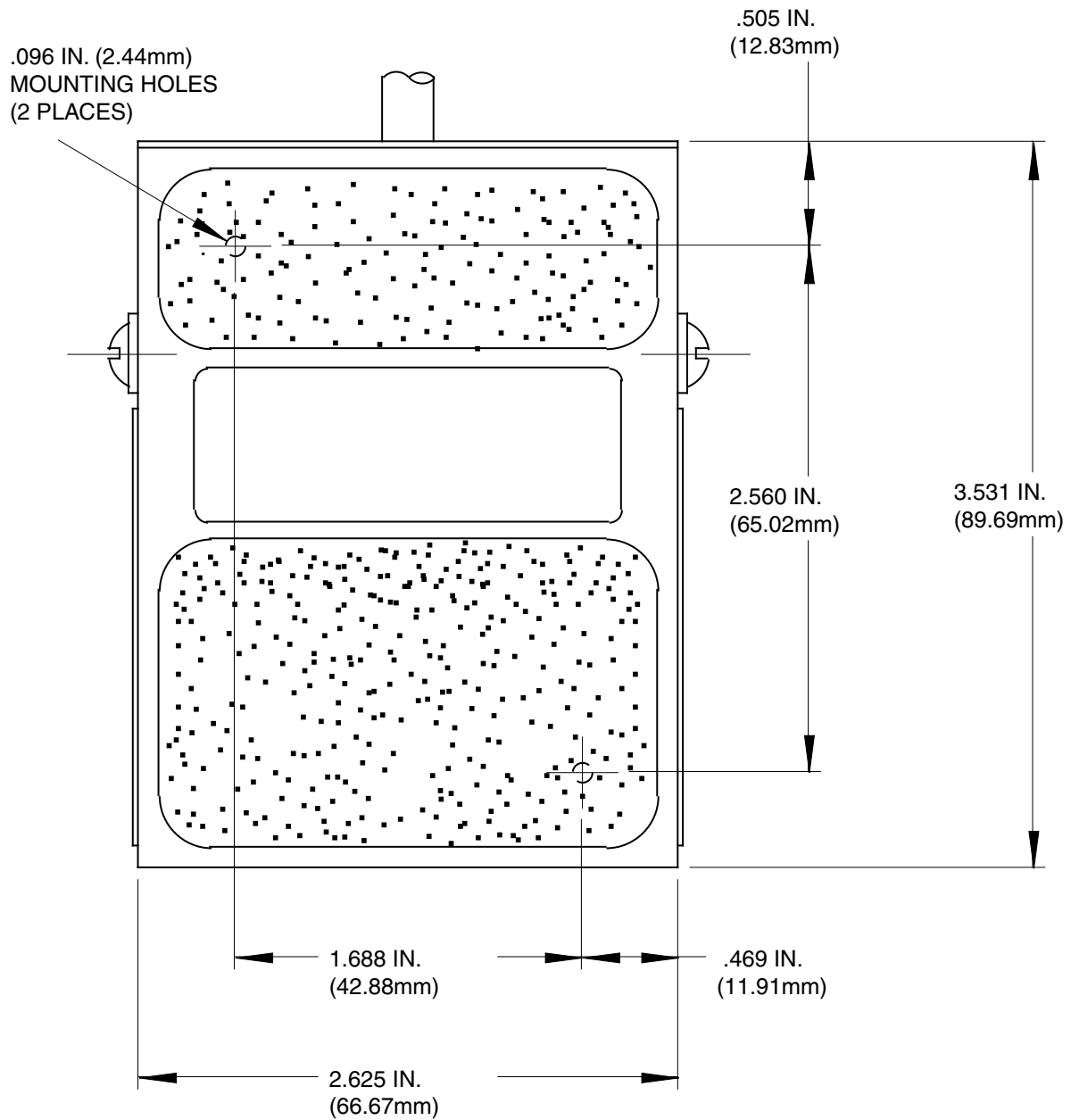
BOLD COPY INDICATES STOCK ITEM

⚠ WARNING THESE ARE LOW POWER DEVICES AND MUST BE USED ONLY IN THOSE APPLICATIONS WHERE SUITABLE DESIGN CONSTRAINTS AND SAFETY PRECAUTIONS ARE MET.

- * Supplied with 6 ft. 18/3 cord without plug. Green lead grounded.
- ** Supplied with 6 ft. 14/3 cord without plug. Green lead grounded.
- *** Supplied with 8ft. 16/4 cord without plug. Green lead grounded.
- ± Supplied with 6 ft. 18/3 cord with 3 prong series plug. Green lead grounded.
- ±± Supplied with 8 ft. 14/3 cord with 3 prong series plug. Green lead grounded.
- ±±± Supplied with 8 ft. 22/1 audio cable with 2 contact .250 diameter phone plug, not grounded.
- ° Supplied without cordset.
- °° Supplied with 8 ft. 18/3 cord and 3 prong series plug, green lead grounded.
- °°° Supplied with 8 ft. 18/3 cord without plug, green lead grounded.

Treadlite II Maintained Model

NOTE: ALL DIMENSIONS ARE FOR REFERENCE ONLY.



EN 60529 Degree of Protection IP20 (IP68 Upon Request)

Driptight • Dusttight • Watertight (Available) COMPACT VERSATILE LOW PROFILE DESIGN

Materials of Construction:

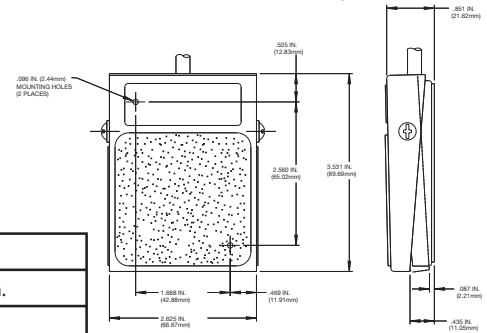
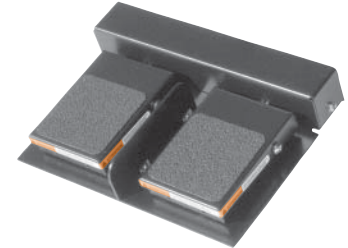
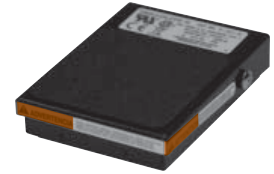
- Steel housing is painted black
- Two single models mounted on a twin base plate with wiring channel
- A divider bar between pedals which helps prevent accidental operation of both switches at one time

Features & Benefits:

- Incorporates a positive over center rocker type action
- Nonskid base pad and foot treadle pad
- 2 Holes provided for rigid mounting to floor or equipment
- The low profile and light pressure required to operate reduces operator fatigue

Options:

- Special Twin, Triple & Quad baseplates with wiring channel available on special order
- Stainless Steel Model Available (See Treadlite II - Stainless Steel" on page 44 for details)
- Mounting Plate Available
- Heavy gauge steel guard available (See "Accessories - Guards" on page 74 & 75 for details)



WARNING THE T-91-PS and T-91-PSNC ARE LOW POWER DEVICES AND MUST BE USED ONLY IN THOSE APPLICATIONS WHERE SUITABLE DESIGN CONSTRAINTS AND SAFETY PRECAUTIONS ARE MET.

Single		Twin	
Size (HxWxD):	3.50 x 2.63 x 1.00 In.	Size (HxWxD):	1.48 x 6.12 x 3.56 In.
Weight:	7 oz.	Weight:	1.5 lbs.
Twin		Twin	
Size (HxWxD):	7.94 x 5.56 x 1.38 In.	Size (HxWxD):	1.48 x 6.12 x 3.56 In.
Weight:	4.00 lbs.	Weight:	1.5 lbs.

WARNING SEE PRODUCT WARNING ON PAGE 8

SPECIFICATIONS (Special variations are available to the O.E.M. on special order on the models listed below)

AGENCY APPROVALS	EN 60529 Degree of Protection	CATALOG NUMBER	DESCRIPTION	CIRCUIT	FORM	ELECTRICAL RATINGS
	IP20	T-91-S	Single / Momentary	SPDT	C	15 A 125-250 VAC 1/2 H.P. 125-250 VAC
	IP20	Twin T-91-S9	Single / Momentary	SPDT Each Side	C	15 A 125-250 VAC 1/2 H.P. 125-250 VAC
	IP20	T-91-SC36 ¹	Single / Momentary	SPDT Wired N.O.	A	10 A 125-250 VAC 1/2 H.P. 125-250 VAC
	IP20	T-91-SCEA ⁷	Single / Momentary	SPDT Wired N.O.	A	10 A 125-250 VAC 1/2 H.P. 125-250 VAC
	IP20	T-91-SC36A ²	Single / Momentary	SPDT Wired N.O.	A	15 A 125-250 VAC 1/2 H.P. 125-250 VAC
	IP20	T-91-SC3 ⁴	Single / Momentary	SPDT Wired N.O.	A	10 A 125 VAC 1/2 H.P. 125 VAC
	IP20	T-91-SC3A ⁵	Single / Momentary	SPDT Wired N.O.	A	15 A 125 VAC 1/2 H.P. 125 VAC
	IP20	T-91-PS ⁶	Single / Momentary	SPDT Wired N.O.	A	3 A 30 VAC Max. Class 2 Circuits Only
	IP20	T-91-PSNC ⁶	Single / Momentary	SPDT Wired N.C.	B	3 A 30 VAC Max. Class 2 Circuits Only
	IP20	T-91-SCE ⁸	Single / Momentary	SPDT Wired N.O.	A	16 A 125-250 VAC 1/2 H.P. 125-250 VAC
	IP20	T-91-SE	Single / Momentary	SPDT	C	16 A 125-250 VAC 1/2 H.P. 125-250 VAC
	IP20	Twin T-91-SC48 ³	Twin / Momentary	SPDT Wired N.O. Both Sides	A	13 A 125-250 VAC 1/2 H.P. 125-250 VAC

¹Supplied with 6 ft. 18/3 cord without plug. Green lead grounded. ²Supplied with 6 ft. 14/3 cord without plug. Green lead grounded. ³Two T-91-S models mounted on a common steel baseplate, with a wiring channel & supplied with 8 ft. 16/4 cord without plug, Green lead grounded. ⁴Supplied with 6 ft. 18/3 cord with 3 prong series plug. Green lead grounded. ⁵Supplied with 8 ft. 14/3 cord with 3 prong series plug. Green lead grounded. ⁶Supplied with 8 ft. 22/1 audio cable with 2 contact .250 diameter phone plug, not grounded. ⁷Supplied with 2 meter 18/3 cord with brown, blue & green/yellow leads. ⁸Supplied with 2 meter 14/3 cord ⁹Two T-91-S models mounted on common cast aluminum base, no wiring Channel

X-ON Electronics

Largest Supplier of Electrical and Electronic Components

Click to view similar products for [9V Battery Snaps & Contacts](#) category:

Click to view products by [Linemaster](#) manufacturer:

Other Similar products are found below :

[139B](#) [173P](#) [266](#) [491-SC36](#) [642-S](#) [1295](#) [12BC2202-GR](#) [2238](#) [2241](#) [2242](#) [2243](#) [227](#) [236](#) [237](#) [2410.0301-01](#) [262](#) [270](#) [271](#) [121-0626/I-GR](#)
[121-0426/IM-GR](#) [121-0626/T-GR](#) [121-0826/T-GR](#) [121-1026/I-GR](#) [12BH617T-GR](#) [123-5025-GR](#) [12BC269-GR](#) [12BH615D-GR](#) [121-](#)
[0624/O-GR](#) [GEM-V36](#) [531-SWHOX](#) [971-SB](#) [T-91-SC3](#) [632-DA](#) [634-DA](#) [636-S](#) [635-S](#) [632S TWIN DIVIDER](#) [3C-30A2-S](#) [3B-30A2-S](#)
[534-SS](#) [491-S](#) [L-2-S](#) [971-SO](#) [972-S](#) [606-1300-011](#) [606-1800-012](#) [616-1800-247](#) [6254-OB](#) [6289-PP](#) [6289-CC](#)