

## Single-phase chassis-mounting filter FN 2340

- Current ratings from 2 to 20A
- Improved differential mode performance
- UL-rated materials
- Nennströme von 2 bis 20A
- Erhöhte symmetrische Dämpfung
- UL konformes Material
- Courants de service de 2 à 20A
- Bonne atténuation en mode différentiel
- Matériaux UL



### Filter selection table

Filter	Conn. / Housing		Current ratings @40°C (25°C) A	Inductance		Capacitance		Resistance R MΩ	Weight g
				L mH	L1 μH	Cx μF	Cy nF		
FN2340Y-2-06	Fast-on	H1	2 (2.25)	0.52	-	0.1	5.5	1	85
FN2340Y-3-06	Fast-on	H2	3 (3.35)	1.7	-	0.1	5.5	1	115
FN2340Y-5-06	Fast-on	H2	5 (5.6)	0.54	-	0.1	5.5	1	115
FN2340Y-10-06	Fast-on	J1	10 (11.2)	0.54	-	0.1	5.5	1	125
FN2340Y-20-06	Fast-on	K2	20 (22.4)	0.43	-	0.1	5.5	1	230
FN2340Y-20-10	Screw	K2	20 (22.4)	0.43	-	0.1	5.5	1	255

### Approvals

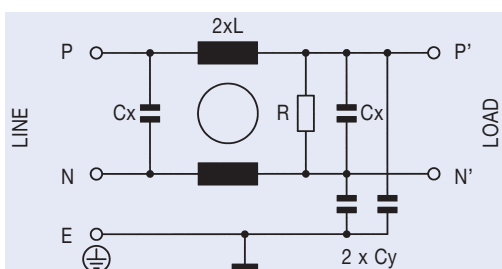


### Additional specifications

Filter type	Maximum operating voltage		Operating frequency Hz	Hipot test voltage		Maximum leakage @ 230VAC/50Hz mA	Temperature range
	VAC	Hz		PN→E VAC	P→N VAC		
All types	250	50/60	DC to 400	2000	760	0.94	-25°C - +100°C

MTBF at 40°C, 230V, per Mil-HB-217F: 3,000,000 hours.

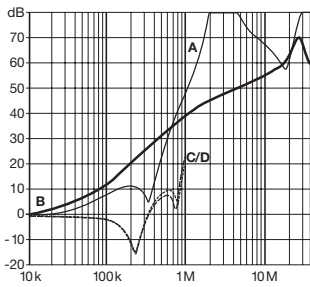
### Electrical schematic



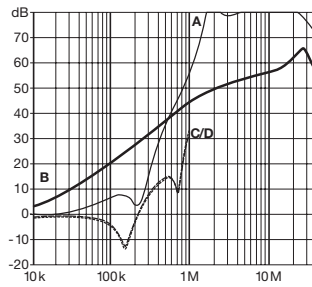
## FN 2340 insertion loss

Per CISPR 17; A = 50Ω/50Ω sym, B = 50Ω/50Ω asym, C = 0.1Ω/100Ω sym, D = 100Ω/0.1Ω sym

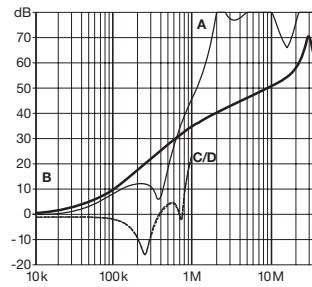
### 2 amp types



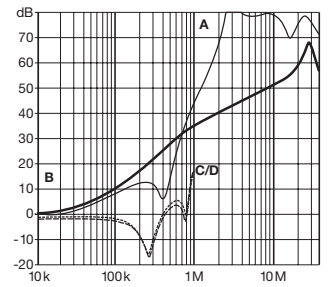
### 3 amp types



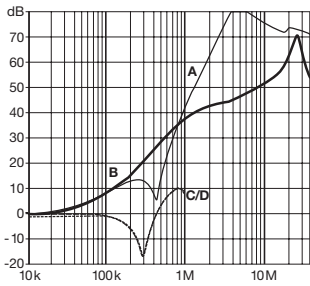
### 5 amp types



### 10 amp types



### 20 amp types

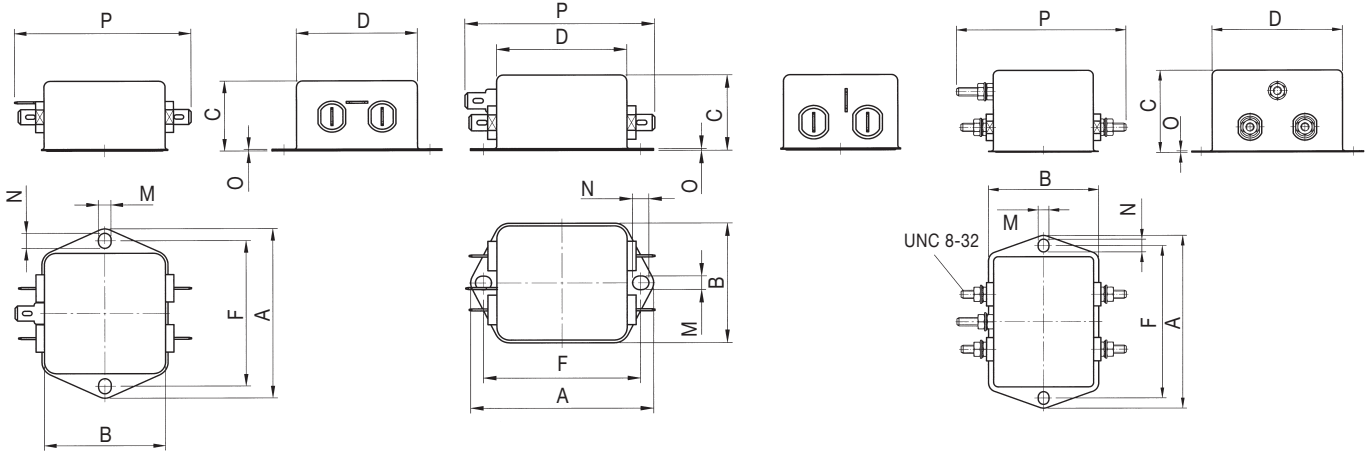


## Mechanical data

-2A, -10A, -20A (-06)

-3A, -5A

-20A (-10)



Housings H1, J1, K2

Housing H2

Housing K2

### FN2340Y

	2A	3A	5A	10A	20A (-06)	20A (-10)	Tol. [ mm ]
A	71					85	± 0.5
B	46.6			50.5	54		± 0.5
C	22.3	29.3			40		± 0.5
D	50.5				64		± 0.5
F	61				75		± 0.3
M					5.3		± 0.1
N					6.3		± 0.1
O					0.7		± 0.1
P	67.6	74		73.6	72	83	± 1

All dimensions in mm; 1 inch = 25.4mm.

## X-ON Electronics

Largest Supplier of Electrical and Electronic Components

*Click to view similar products for [Power Line Filters](#) category:*

*Click to view products by [Schaffner](#) manufacturer:*

Other Similar products are found below :

[5B1](#) [6609019-3](#) [6609026-5](#) [6609030-6](#) [6609063-2](#) [6609973-2](#) [7-1609090-5](#) [F1500CA06](#) [F7382Z](#) [F7863Z](#) [FAHAV3100ZC000](#) [806276](#)  
[FN2020B-1-06](#) [FN2080B-10-06](#) [FN2090A-1-06](#) [FN2410H-32-33](#) [FN2410H-80-34](#) [FN2412H-16-44](#) [FN406B-0.5-02](#) [FN420-1-13](#) [FP144](#) [8-](#)  
[6609089-0](#) [12-MMB-030-11-D](#) [B84144A90R120](#) [20B1](#) [RSEL-2001A](#) [2B1](#) [LP183](#) [1-6609070-1](#) [F1500CA10](#) [1B1](#) [FN2020A-10-06](#)  
[FN2020B-3-06](#) [FN2060A-3-06](#) [FN2070A-16-06](#) [FN2070B-16-08](#) [FN2090B-12-06](#) [FN2090Z-1-06](#) [FN2410H-25-33](#) [FN2410H-60-34](#)  
[FN2410H-8-44](#) [FN2412H-25-33](#) [FN2412H-8-44](#) [FN610R-3-06](#) [20EHZ7](#) [20K1](#) [30B6](#) [30BCF10R](#) [3K1](#) [4-6609089-0](#)