

1-phase filters FN 2350

Exceptional performance EMI filter

SCHAFFNER
safety for electronic systems



- Rated currents from 2 to 10A
- Exceptional differential and common-mode attenuation
- UL-rated materials

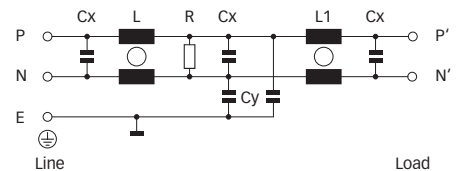
Approvals



Technical specifications

Maximum continuous operating voltage:	250VAC, 50/60Hz
Operating frequency:	dc to 400Hz
Rated currents:	2 to 10A @ 40°C max.
High potential test voltage:	P → E 2000VAC for 2 sec P → N 760VAC for 2 sec
Temperature range (operation and storage):	-25°C to +100°C (25/100/21)
Flammability corresponding to:	UL 94V-2 or better
Design corresponding to:	UL 1283, CSA 22.2 No. 8 1986, IEC/EN 60939
MTBF @ 40°C/230V (Mil-HB-217F):	2,200,000 hours

Typical electrical schematic



Features and benefits

- FN 2350 filters are designed for easy and fast chassis mounting.
- FN 2350 filters have a perfect performance/size ratio.
- All filters provide a high differential and common-mode attenuation performance, based on chokes with high saturation resistance and excellent thermal behavior.
- Faston terminal connection with additional spade solder possibility.
- Custom-specific versions on request.

Typical applications

- Electrical and electronic equipment
- Consumer goods
- Power supplies
- Office automation equipment
- Datacom equipment

Filter selection table

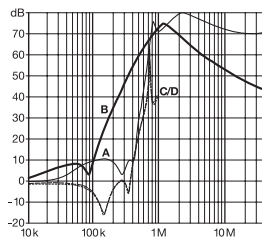
Filter	Rated current @ 40°C (25°C)	Leakage current* @ 230VAC/50Hz	Inductance		Capacitance		Resistance	Input/Output connections	Weight [g]
	[A]	[mA]	L [mH]	L1 [mH]	Cx [µF]	Cy [nF]	R [MΩ]		
FN 2350Y-2-06	2 (2.25)	0.94	0.52	0.52	0.1	5.5	1	-06	115
FN 2350Y-3-06	3 (3.35)	0.94	1.7	1.7	0.1	5.5	1	-06	175
FN 2350Y-5-06	5 (5.6)	0.94	0.54	0.54	0.1	5.5	1	-06	175
FN 2350Y-10-06	10 (11.2)	0.94	0.54	0.54	0.1	5.5	1	-06	225

* Maximum leakage under normal operating conditions. Note: if the neutral line is interrupted, worst case leakage could reach twice this level.

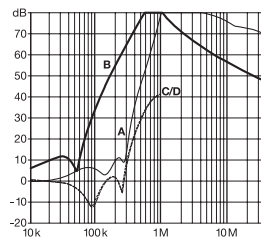
Typical filter attenuation

Per CISPR 17; A = 50Ω/50Ω sym; B = 50Ω/50Ω asym; C = 0.1Ω/100Ω sym; D = 100Ω/0.1Ω sym

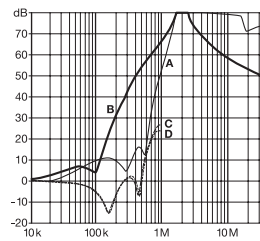
2A types



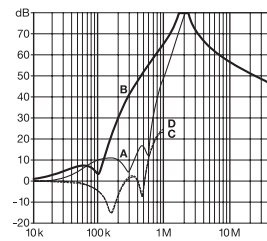
3A types



5A types

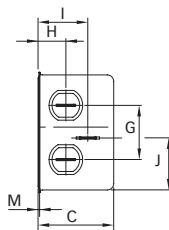
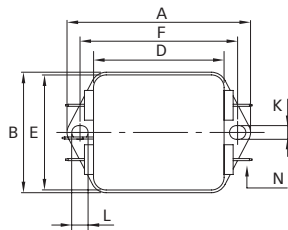


10A types

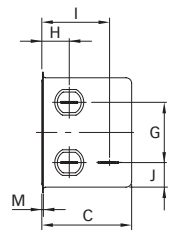
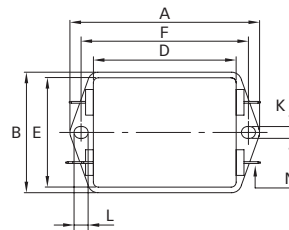


Mechanical data

2 to 5A types



10A types



Dimensions

	2A	3A	5A	10A	Tolerances
A	71	85	85	85	±0.5
B	46.6	54	54	54	±0.5
C	29.3	30.3	30.3	40.3	±0.5
D	50.5	64	64	64	±0.5
E	44.5	49.8	49.8	49.8	±0.5
F	61	75	75	75	±0.3
G	21	27	27	27	±0.2
H	10.8	12.3	12.3	12.3	±0.5
I	19.3	29.8	29.8	29.8	±0.5
J	20.1	11.4	11.4	11.4	±0.5
K	5.3	5.3	5.3	5.3	
L	6.3	6.3	6.3	6.3	
M	0.7	0.7	0.7	0.7	
N	6.3 x 0.8	6.3 x 0.8	6.3 x 0.8	6.3 x 0.8	

All dimensions in mm; 1 inch = 25.4mm
Tolerances according: ISO 2768 / EN 22768

X-ON Electronics

Largest Supplier of Electrical and Electronic Components

Click to view similar products for [Power Line Filters](#) category:

Click to view products by [Schaffner](#) manufacturer:

Other Similar products are found below :

[5B1](#) [6609019-3](#) [6609026-5](#) [6609030-6](#) [6609063-2](#) [6609973-2](#) [7-1609090-5](#) [F1500CA06](#) [F7382Z](#) [F7863Z](#) [FAHAV3100ZC000](#) [806276](#)
[FN2020B-1-06](#) [FN2080B-10-06](#) [FN2090A-1-06](#) [FN2410H-32-33](#) [FN2410H-80-34](#) [FN2412H-16-44](#) [FN406B-0.5-02](#) [FN420-1-13](#) [FP144](#) [8-](#)
[6609089-0](#) [12-MMB-030-11-D](#) [B84144A90R120](#) [20B1](#) [RSEL-2001A](#) [2B1](#) [LP183](#) [1-6609070-1](#) [F1500CA10](#) [1B1](#) [FN2020A-10-06](#)
[FN2020B-3-06](#) [FN2060A-3-06](#) [FN2070A-16-06](#) [FN2070B-16-08](#) [FN2090B-12-06](#) [FN2090Z-1-06](#) [FN2410H-25-33](#) [FN2410H-60-34](#)
[FN2410H-8-44](#) [FN2412H-25-33](#) [FN2412H-8-44](#) [FN610R-3-06](#) [20EHZ7](#) [20K1](#) [30B6](#) [30BCF10R](#) [3K1](#) [4-6609089-0](#)