

# 1-phase filters FN 332

## Performance EMI filter



- Rated currents from 1 to 10A
- Compact housing
- Solder or faston connection
- Optional overvoltage protection (Z type)

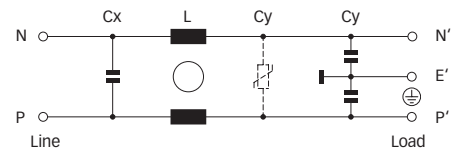
### Approvals



### Technical specifications

Maximum continuous operating voltage:	250VAC, 50/60Hz
Operating frequency:	dc to 400Hz
Rated currents:	1 to 10A @ 40°C max.
High potential test voltage:	P → E 2000VAC for 2 sec P → N 760VAC for 2 sec P → N 250VAC for 2 sec (Z types)
Temperature range (operation and storage):	-25°C to +100°C (25/100/21)
Flammability corresponding to:	UL 94V-2 or better
Design corresponding to:	UL 1283, CSA 22.2 No. 8 1986, IEC/EN 60939
Surge pulse protection (optional):	2kV, IEC 61000-4-5
MTBF @ 40°C/230V (Mil-HB-217F):	710,000 hours

### Typical electrical schematic



### Features and benefits

- FN 332 filters are designed for easy and fast chassis mounting.
- FN 332 filters are also available with integrated surge pulse protection to safeguard sensitive electrical equipment.
- All FN 332 single-phase filters provide a good attenuation performance, based on chokes with high saturation resistance and excellent thermal behavior.
- Chokes with high saturation resistance and high inductivity.
- Surge pulse protection.
- Two terminal options for soldering or faston connection.
- Custom-specific versions on request.

### Typical applications

- Electrical and electronic equipment
- Consumer goods
- Household equipment
- Power supplies
- Office automation equipment
- Datacom equipment
- Industrial equipment auxiliary supply

Filter selection table

Filter*	Rated current @ 40°C (25°C)	Leakage current** @ 230VAC/50Hz	Inductance L	Capacitance Cx Cy		Surge current [A]	Energy absorption [J]	Input/Output connections		Weight [g]
	[A]	[μA]	[mH]	[nF]	[nF]					
FN 332-1-..	1 (1.2)	340	10	15	2.2			-01	-05	65
FN 332-3-..	3 (3.6)	340	2	15	2.2			-01	-05	65
FN 332-6-..	6 (7.3)	340	0.8	15	2.2			-01	-05	65
FN 332-10A-..	10 (12)	340	0.5	15	2.2			-01	-05	70
FN 332Z-1-..	1 (1.2)	340	10	15	2.2	1200	26	-01	-05	65
FN 332Z-3-..	3 (3.6)	340	2	15	2.2	1200	26	-01	-05	65
FN 332Z-6-..	6 (7.3)	340	0.8	15	2.2	1200	26	-01	-05	65
FN 332Z-10A-..	10 (12)	340	0.5	15	2.2	1200	26	-01	-05	70

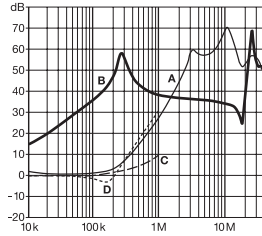
\* To compile a complete part number, please replace the .. with the required I/O connection style (e.g. FN 332-1-061, FN 332Z-10A-05).

\*\* Maximum leakage under normal operating conditions. Note: if the neutral line is interrupted, worst case leakage could reach twice this level.

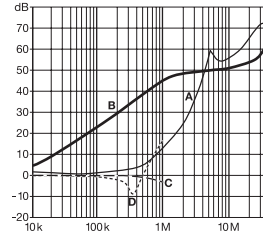
Typical filter attenuation

Per CISPR 17; A = 50Ω/50Ω sym; B = 50Ω/50Ω asym; C = 0.1Ω/100Ω sym; D = 100Ω/0.1Ω sym

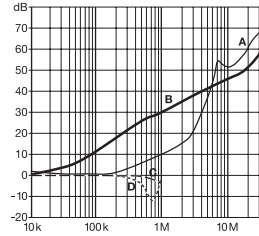
1A types



3 and 6A types

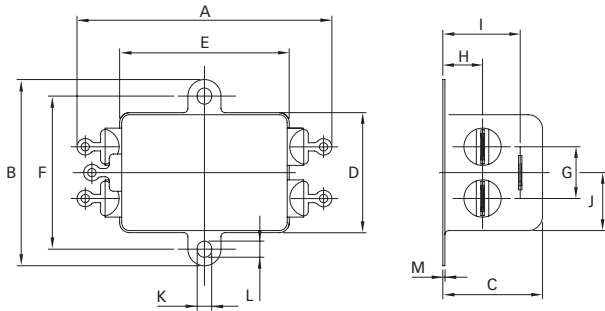


10A types

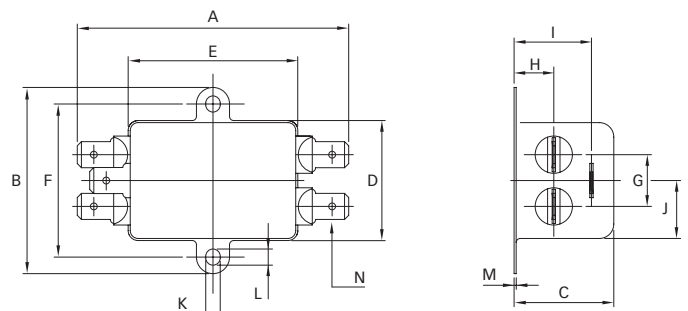


**Mechanical data**

Connection style -01



Connection style -05



**Dimensions**

	Connection style -01	Connection style -05	Tolerances
<b>A</b>	61.6	65.6	±0.5
<b>B</b>	45	45	±0.5
<b>C</b>	24.8	24.8	±0.5
<b>D</b>	28	28	±0.5
<b>E</b>	40	40	±0.5
<b>F</b>	37	37	±0.4
<b>G</b>	12.5	12.5	±0.2
<b>H</b>	9.6	9.6	±0.2
<b>I</b>	18.7	18.7	±0.5
<b>J</b>	14	14	±0.5
<b>K</b>	3.5	3.5	
<b>L</b>	3.9	3.9	
<b>M</b>	0.5	0.5	
<b>N</b>		6.3 x 0.8	

All dimensions in mm; 1 inch = 25.4mm  
Tolerances according: ISO 2768 / EN 22768

## X-ON Electronics

Largest Supplier of Electrical and Electronic Components

*Click to view similar products for [Power Line Filters](#) category:*

*Click to view products by [Schaffner](#) manufacturer:*

Other Similar products are found below :

[5B1](#) [6609019-3](#) [6609026-5](#) [6609030-6](#) [6609063-2](#) [6609973-2](#) [7-1609090-5](#) [F1500CA06](#) [F7382Z](#) [F7863Z](#) [FAHAV3100ZC000](#) [806276](#)  
[FN2020B-1-06](#) [FN2080B-10-06](#) [FN2090A-1-06](#) [FN2410H-32-33](#) [FN2410H-80-34](#) [FN2412H-16-44](#) [FN406B-0.5-02](#) [FN420-1-13](#) [FP144](#) [8-](#)  
[6609089-0](#) [12-MMB-030-11-D](#) [B84144A90R120](#) [20B1](#) [RSEL-2001A](#) [2B1](#) [LP183](#) [1-6609070-1](#) [F1500CA10](#) [1B1](#) [FN2020A-10-06](#)  
[FN2020B-3-06](#) [FN2060A-3-06](#) [FN2070A-16-06](#) [FN2070B-16-08](#) [FN2090B-12-06](#) [FN2090Z-1-06](#) [FN2410H-25-33](#) [FN2410H-60-34](#)  
[FN2410H-8-44](#) [FN2412H-25-33](#) [FN2412H-8-44](#) [FN610R-3-06](#) [20EHZ7](#) [20K1](#) [30B6](#) [30BCF10R](#) [3K1](#) [4-6609089-0](#)