

# 388 Series - Time Delay Relay

## 2PDT, 3PDT, 12 Amp



The 388 timers are square base, bladed versions of time delay relays. On delay, off delay and interval functions are all available with either AC or DC inputs. On delay and interval products can have up to three poles. Off delays have two poles. The timing circuit is oscillator based. Fixed time and externally adjustable versions. Both socket and flange mount versions are available.

### GENERAL SPECIFICATIONS (@ 25° C)

#### Timing:

Functions Available	On-delay, Off-delay, Interval
Time Range	Up to 180 minutes
Timing Adjustment	Knob or external R
Timing Repeatability (Constant voltage and temperature)	0.1%
Reset Time maximum	150mS
Input Pulse Length minimum	50mS

#### Contacts:

Contact Configuration	2PDT, 3PDT
Contact Material	Silver Alloy
Contact Rating	
120 / 240VAC Resistive	12 Amp / 12 Amp
28VDC Resistive	12 Amp
Motor 120VAC	1/3Hp
Motor 240VAC	1/2Hp
Minimum Contact Load	500mW
Contact Resistance, Initial	100 milliohms max @ 6VDC, 1A

#### Coil:

Coils Available	AC and DC
Nominal Coil Power	2.75VA 2W
Input Voltage Tolerance -AC	85% to 110% of nominal
Input Voltage Tolerance -DC	80% to 110% of nominal
Transient Protection	Yes
Reverse Polarity Protection	Yes
Duty	Continuous

#### Dielectric Strength:

Across Open Contacts	500Vrms
Between Mutually Insulated Points	1500Vrms
Insulation Resistance	1,000 Mohms min @ 500VDC

#### Temperature:

Operating	-20 to 55°C (-4 to 131°F)
Storage	-40 to 85°C (-40 to 185°F)

#### Life Expectancy:

Electrical (full load operations)	100,000
Mechanical (no load operations)	10,000,000

#### Miscellaneous:

Mounting Position	Any
Mating Socket	SK-SQB11-DS
Enclosure	Opaque Polycarbonate
Weight	4.0oz (113 grams)



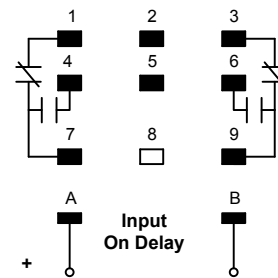
Knob Adjustable



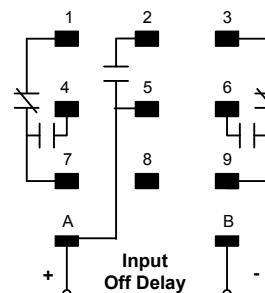
Externally Adjustable

### 388TD Wire Diagram

#### On Delay



#### Off Delay - External Adjustable

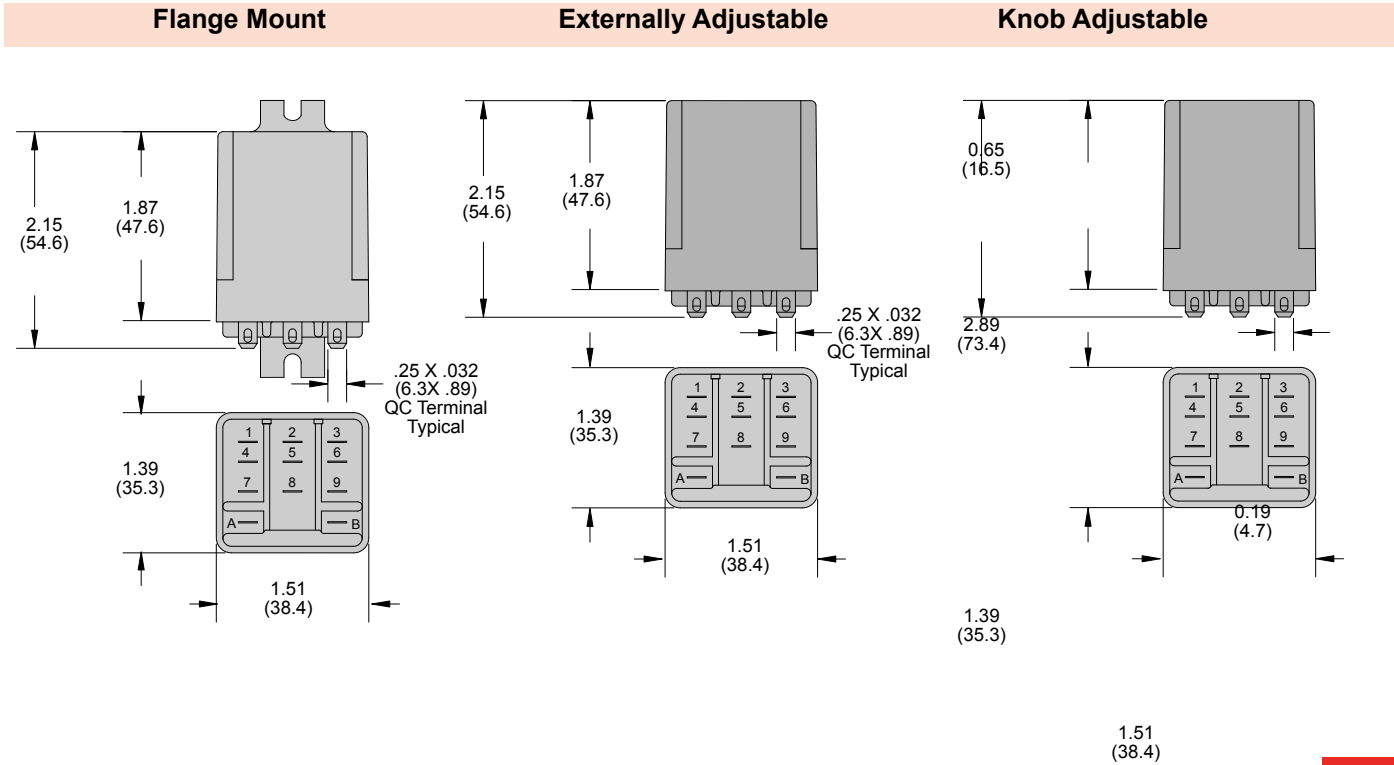


# Timer / Sensor - Time Delay & Sensor Relays

## 5 - 25 Amp

### Outline Dimensions

Dimensions Shown in inches & (millimeters)



### 388TD Part Number Chart

Part number	Nominal input voltage	Timing range	External resistor
On delay plug-in			
388ACPSOX-1	120VAC	0.1 to 10 seconds	20,000 ohms per second
388ACPSOX-2	120VAC	1.0 to 120 seconds	20,000 ohms per second
388CPSOX-1	24VDC	0.1 to 10 seconds	16,000 ohms per second
388CPSOX-2	24VDC	1.0 to 120 seconds	16,000 ohms per second
On delay surface mount flange style			
388ACQSOX-1	120VAC	0.1 to 10 seconds	20,000 ohms per second
388ACQSOX-2	120VAC	1.0 to 120 seconds	20,000 ohms per second
388CQSOX-2	24VDC	0.1 to 10 seconds	16,000 ohms per second
Off delay plug-in			
388CPSRX-22	24VDC	1.0 to 120 seconds	16,000 ohms per seconds

## X-ON Electronics

Largest Supplier of Electrical and Electronic Components

*Click to view similar products for [Time Delay & Timing Relays](#) category:*

*Click to view products by [Struthers-Dunn](#) manufacturer:*

Other Similar products are found below :

[7012GD](#) [7012L10BN](#) [7012L10DY1N](#) [7012L10FN](#) [7012L10HN](#) [7012L26K](#) [7012L8AI2LLSN](#) [7012L8BN](#) [7012L8KN](#) [7012OBILM](#)  
[7012OIT](#) [7012PALL](#) [7012PDM](#) [7012PFX](#) [7022L10DN](#) [7022L8BN](#) [7022L8EN](#) [7022L8HN](#) [7022X3D](#) [7024NB](#) [7024SCT](#) [88256455](#) [H3BG-](#)  
[N8H](#) [AC110V](#) [H3CRF8AC2448DC1248](#) [1423151-3](#) [1423154-8](#) [1423462-7](#) [1423618-6](#) [1423151-5](#) [1423156-7](#) [1423618-4](#) [2112AH1SDC947](#)  
[2122DH1NJC467](#) [2122DH1PE](#) [2-1617805-2](#) [2-1617805-6](#) [K61C-08](#) [286XCXC-300-24D](#) [SCBRX022XXACXAC991](#) [SHS10S110A](#)  
[SHS20M220A](#) [1755074-5](#) [SSC12AKA](#) [FAASPRING2](#) [2112DH3NDC50-13](#) [2122DH34NDC629](#) [2-1437479-8](#) [2-1617805-1](#) [2-1617805-3](#) [2-](#)  
[1617805-7](#)