

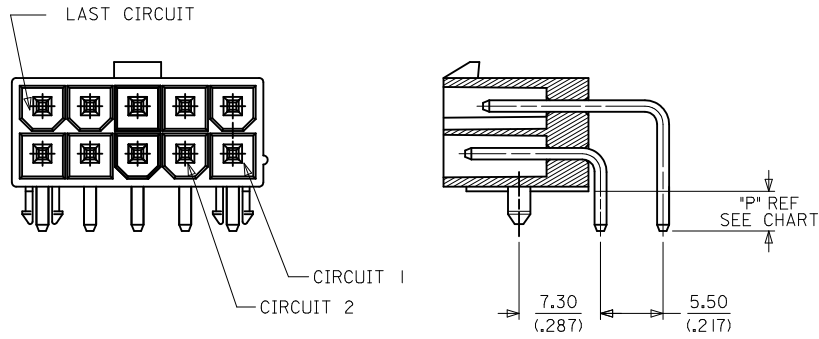
CIRCUIT SIZE	DIM. "A"	DIM. "B"	DIM. "C"	DIM. "D"
2	.606 (15.40)	N.A.	.213 (5.40)	.354 (9.00)
4	.772 (19.60)	.165 (4.20)	.378 (9.60)	.520 (13.20)
6	.937 (23.80)	.331 (8.40)	.543 (13.80)	.685 (17.40)
8	1.102 (28.00)	.496 (12.60)	.709 (18.00)	.850 (21.60)
10	1.268 (32.20)	.661 (16.80)	.874 (22.20)	1.016 (25.80)
12	1.433 (36.40)	.827 (21.00)	1.039 (26.40)	1.181 (30.00)
14	1.598 (40.60)	.992 (25.20)	1.205 (30.60)	1.346 (34.20)
16	1.764 (44.80)	1.157 (29.40)	1.370 (34.80)	1.512 (38.40)
18	1.929 (49.00)	1.323 (33.60)	1.535 (39.00)	1.677 (42.60)
20	2.094 (53.20)	1.488 (37.80)	1.701 (43.20)	1.843 (46.80)
22	2.260 (57.40)	1.654 (42.00)	1.866 (47.40)	2.008 (51.00)
24	2.425 (61.60)	1.819 (46.20)	2.031 (51.60)	2.173 (55.20)

- NOTES:
- MATERIALS:
 - HOUSING MATERIAL OPTIONS: SEE CHART FOR SPECIFIC PART
 - NYLON (PA66), UNFILLED, UL94V-2, COLOR: NATURAL
 - NYLON (PA66), UNFILLED, UL94V-2, COLOR: BLACK
 - NYLON (PA66), UNFILLED, UL94V-0, COLOR: NATURAL
 - NYLON (PA66), UNFILLED, UL94V-0, COLOR: BLACK
 - TERMINALS: BRASS
 - FINISH (PLATING) OPTIONS: SEE CHART FOR SPECIFIC PART
 - *TIN* = 0.00508/(.000200) MIN. BRIGHT TIN OVER
0.00254/(.000100) MIN. COPPER
 - *G* = 0.00076/(.000030) MIN. GOLD OVER
0.00127/(.000050) MIN. NICKEL
 - *GS* = 0.00076/(.000030) MIN. SELECT GOLD AND
0.00254/(.0000100) SELECT MATTE TIN OVER
0.00127/(.000050) MIN. NICKEL
 - *S* = 0.00254/(.000100) MIN. BRIGHT TIN OVER
0.00127/(.000050) MIN. NICKEL
 - *MS* = 0.00254/(.000100) MIN. MATTE TIN OVER
0.00127/(.000050) MIN. NICKEL
 - *RM* = 0.00152/(.000060) MIN. REFLOWED MATTE TIN OVER
0.00127/(.000050) MIN. NICKEL OVERALL
 - PRODUCT SPECIFICATION: PS-5556-001
 - PACKAGING: SEE CHART: BULK PER PK-5569-002
TRAY PER PK-5569-003
 - CIRCUITS SHOWN PROVIDE THE MAKE-FIRST/BREAK-LAST FEATURE. SEE CHART ON SHEET 3 FOR SPECIFIC CIRCUIT LOCATIONS.
 - PART MATES WITH MINI-FIT JR. RECEPTACLE #5557.
 - CONNECTORS ARE NOT TO BE MATED OR UNMATED WHILE CIRCUITS ARE LIVE.
 - PARTS ARE NOT DESIGNED FOR CURRENT SHARING.
 - DISCOLORATION IN THE BANDOLIER CARRIER AREA OF THE PIN IS INHERENT TO THE PLATING PROCESS AND IS DUE TO THE MASKING EFFECT OF THE CARRIER. THIS DISCOLORATION, IF PRESENT, IS IN A NON-FUNCTIONAL AREA OF THE PIN AND WILL NOT EFFECT THE PERFORMANCE OF THE HEADER ASSEMBLY.
 - PART CONFORMS TO CLASS "B" REQUIREMENTS OF COSMETIC SPECIFICATION PS-45499-002.

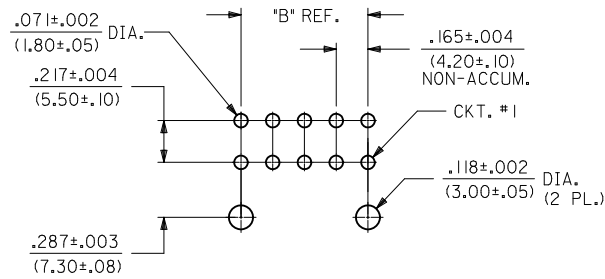
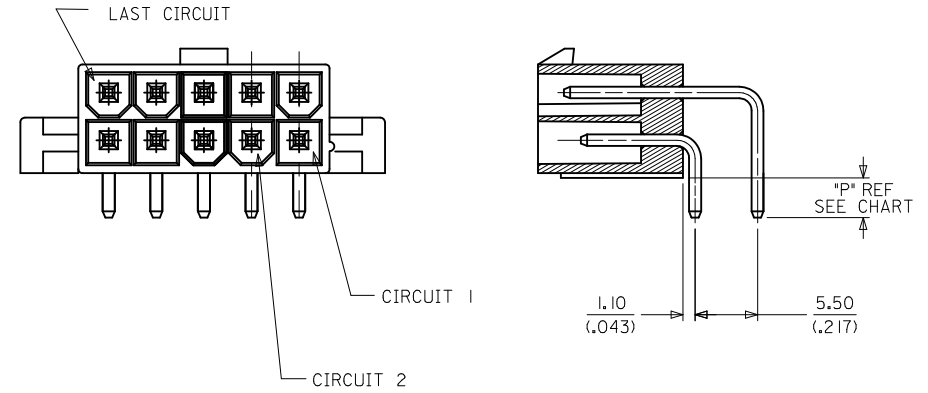
ADD -0029 EC NO: UCP2011-3503 DRW: NGUYEN 2011/05/11 CHKD: BELL 2011/05/11 APPR: FSMITH 2011/05/18 REV: D6	QUALITY SYMBOLS ▽=0 ▽=0 ▽=0	GENERAL TOLERANCES (UNLESS SPECIFIED)		DIMENSION STYLE MM/IN		SCALE 4:1	DESIGN UNITS METRIC	THIRD ANGLE PROJECTION																	
		<table border="1"> <thead> <tr> <th></th> <th>mm</th> <th>INCH</th> </tr> </thead> <tbody> <tr> <td>4 PLACES ±</td> <td>---</td> <td>±---</td> </tr> <tr> <td>3 PLACES ±</td> <td>---</td> <td>±.15</td> </tr> <tr> <td>2 PLACES ±</td> <td>0.38</td> <td>±---</td> </tr> <tr> <td>1 PLACE ±</td> <td>---</td> <td>±---</td> </tr> </tbody> </table>			mm	INCH	4 PLACES ±	---	±---	3 PLACES ±	---	±.15	2 PLACES ±	0.38	±---	1 PLACE ±	---	±---	DRAWN BY POLGAR		DATE 1998/01/23	MINI-FIT JR RIGHT ANGLE HEADER ASSY CUSTOM HEADERS MOLEX INCORPORATED SD-44130-001			
			mm	INCH																					
		4 PLACES ±	---	±---																					
3 PLACES ±	---	±.15																							
2 PLACES ±	0.38	±---																							
1 PLACE ±	---	±---																							
ANGULAR ±1/2°		CHECKED BY BANDURA		DATE 1998/01/28																					
DRAFT WHERE APPLICABLE MUST REMAIN WITHIN DIMENSIONS		APPROVED BY FSMITH		DATE 2011/05/18																					
SEE CHART		MATERIAL NO. DOCUMENT NO.		SHEET NO. 1 OF 4																					

THIS DRAWING CONTAINS INFORMATION THAT IS PROPRIETARY TO MOLEX INCORPORATED AND SHOULD NOT BE USED WITHOUT WRITTEN PERMISSION

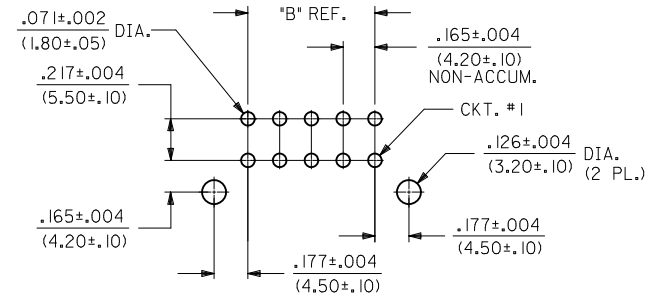
ASSEMBLY TYPE A
HOUSING WITH PEGS



ASSEMBLY TYPE B
HOUSING WITH FLANGE



RECOMMENDED HOLE LAYOUT FOR
.070/(1.78) MAX. THICK P.C. BOARD.
(PEG MOUNT)



RECOMMENDED HOLE LAYOUT FOR
.070/(1.78) MAX. THICK P.C. BOARD.
(FLANGE MOUNT)

SEE SHEET 1 EC NO: UCP2011-3503 DRAWN: NGUYEN 2011/05/11 CHKD: J.BELL 2011/05/11 APPR: F.SMITH 2011/05/18	QUALITY SYMBOLS ▽=0 ▽=0 ▽=0	GENERAL TOLERANCES (UNLESS SPECIFIED)		DIMENSION STYLE MM/IN		SCALE 4:1	DESIGN UNITS METRIC	THIRD ANGLE PROJECTION		
				DRAWN BY POLGAR	DATE 1998/01/23	TITLE MINI-FIT JR RIGHT ANGLE HEADER ASSY CUSTOM HEADERS				
				CHECKED BY BANDURA	DATE 1998/01/28					
				APPROVED BY F.SMITH	DATE 2011/05/18	MOLEX INCORPORATED				
DRAFT WHERE APPLICABLE MUST REMAIN WITHIN DIMENSIONS		SEE CHART		MATERIAL NO. SD-44130-001		DOCUMENT NO.		SHEET NO. 2 OF 4		
THIS DRAWING CONTAINS INFORMATION THAT IS PROPRIETARY TO MOLEX INCORPORATED AND SHOULD NOT BE USED WITHOUT WRITTEN PERMISSION										

13		12		11		10		9		8		7		6		5		4		3		2		1						
J	MATERIAL NUMBER	HOUSING MAT'L/COLOR	NO OF CKT	HOUSING OPTION	PKG	FINISH SEE NOTE #2	PIN IDENTIFICATION CODE / CIRCUIT LOCATION (SEE CHART BELOW) V = VOID																							
							CKT 1	CKT 2	CKT 3	CKT 4	CKT 5	CKT 6	CKT 7	CKT 8	CKT 9	CKT 10	CKT 11	CKT 12	CKT 13	CKT 14	CKT 15	CKT 16	CKT 17	CKT 18	CKT 19	CKT 20	CKT 21	CKT 22	CKT 23	CKT 24
	44130-0001	NYLON 94V-2/BLACK	06	PEG	BULK	TIN	1	1	1	1	2	1																		
	44130-0002	NYLON 94V-2/BLACK	08	PEG	TRAY	TIN	2	1	1	1	1	1	1																	
	44130-0003	NYLON 94V-0/BLACK	08	PEG	TRAY	TIN	2	1	1	1	1	1	1																	
	44130-0004	NYLON 94V-0/BLACK	06	PEG	BULK	TIN	1	1	1	1	2	1																		
I	44130-0005	NYLON 94V-0/NATURAL	08	PEG	BULK	G	2	2	1	1	1	2	1	2																
	44130-0006	NYLON 94V-0/NATURAL	04	PEG	BULK	S	2	3	2	2																				
	44130-0007	NYLON 94V-0/NATURAL	06	PEG	BULK	S	2	1	1	2	2	2																		
	44130-0008	NYLON 94V-0/NATURAL	10	FLANGES	BULK	S	4	4	4	4	4	4	4	4	4															
H	44130-0009	NYLON 94V-0/NATURAL	06	PEG	BULK	S	V	1	1	2	2	2																		
	44130-0010	NYLON 94V-0/NATURAL	06	PEG	BULK	G	2	2	1	2	2	1																		
	44130-0011	NYLON 94V-0/NATURAL	16	PEG	BULK	G	4	4	4	4	4	4	4	4	4	4	4	4	4	4										
	44130-0012	NYLON 94V-0/NATURAL	06	FLANGES	BULK	TIN	2	1	2	2	2	2																		
	44130-0013	NYLON 94V-2/NATURAL	06	FLANGES	BULK	S	2	2	2	1	2	2																		
G	44130-0014	NYLON 94V-0/NATURAL	04	PEG	BULK	G	1	1	2	2																				
	44130-0015	NYLON 94V-2/NATURAL	24	PEG	BULK	TIN	2	2	1	1	1	1	1	1	1	1	1	1	1	1	1	1	1	1	1	2	1			
	44130-0016	NYLON 94V-0/BLACK	08	PEG	TRAY	TIN	1	1	1	1	1	1	1	1																
	44130-0017	NYLON 94V-0/BLACK	08	PEG	TRAY	TIN	1	2	1	1	1	1	1	1																
F	44130-0018	NYLON 94V-0/NATURAL	02	PEG	BULK	S	2	1																						
	44130-0019	NYLON 94V-0/NATURAL	02	FLANGES	BULK	S	2	1																						
	44130-0020	NYLON 94V-2/BLACK	06	PEG	TRAY	RM	1	1	1	1	2	1																		
	44130-0021	NYLON 94V-0/BLACK	08	PEG	TRAY	RM	2	1	1	1	1	1	1	1																
	44130-0022	NYLON 94V-0/BLACK	06	PEG	TRAY	RM	1	1	1	1	2	1																		
E	44130-0023	NYLON 94V-0/BLACK	08	PEG	TRAY	RM	1	1	1	1	1	1	1	1																
	44130-0024	NYLON 94V-0/NATURAL	08	PEG	BULK	GS	2	2	5	2	2	5	2	2																
	44130-0025	NYLON 94V-0/NATURAL	04	PEG	BULK	S	7	7	7	7																				
	44130-0026	NYLON 94V-2/NATURAL	04	PEG	BULK	S	8	8	8	8																				
D	44130-0027	NYLON 94V-0/NATURAL	02	PEG	BULK	S	5	5																						
	44130-0028	NYLON 94V-0/NATURAL	04	PEG	BULK	MS	8	8	8	8																				

C	PIN ID	MATING CONFIGURATION	DIM P
2	STANDARD MATING	3.5 (.14)	
3	MATE FIRST/BREAK LAST	4.9 (.19)	
4	STANDARD MATING	6.0 (.24)	
5	MATE FIRST/BREAK LAST	4.2 (.17)	
6	STANDARD MATING	4.2 (.17)	
7	STANDARD MATING	2.34 (.092)	
8	STANDARD MATING	5.30 (.209)	

SEE SHEET 1 EC NO: UCP2011-3503 2011/05/11 DRAWING: NGUYEN 2011/05/11 CHKD: J.BELL APPR: FSMITH 2011/05/18	QUALITY SYMBOLS 	GENERAL TOLERANCES (UNLESS SPECIFIED)		DIMENSION STYLE MM/IN		SCALE 1:1	DESIGN UNITS METRIC	THIRD ANGLE PROJECTION	
		4 PLACES ± .05 3 PLACES ± .05 2 PLACES ± 0.38 1 PLACE ± .05	mm INCH	DRAWN BY POLGAR	DATE 1998/01/23	TITLE MINI-FIT JR RIGHT ANGLE HEADER ASSY CUSTOM HEADERS			
		ANGULAR ±1/2°		CHECKED BY BANDURA	DATE 1998/01/28	MATERIAL NO. SD-44130-001			
		DRAFT WHERE APPLICABLE MUST REMAIN WITHIN DIMENSIONS		APPROVED BY FSMITH	DATE 2011/05/18	DOCUMENT NO. SD-44130-001		SHEET NO. 3 OF 4	

13		12		11		10		9		8		7		6		5		4		3		2		1					
MATERIAL NUMBER	HOUSING MAT'L/COLOR	NO OF CKT	HOUSING OPTION	PKG	FINISH SEE NOTE #2	PIN IDENTIFICATION CODE / CIRCUIT LOCATION (SEE CHART BELOW)																							
						CKT 1	CKT 2	CKT 3	CKT 4	CKT 5	CKT 6	CKT 7	CKT 8	CKT 9	CKT 10	CKT 11	CKT 12	CKT 13	CKT 14	CKT 15	CKT 16	CKT 17	CKT 18	CKT 19	CKT 20	CKT 21	CKT 22	CKT 23	CKT 24
44130-0029	NYLON 94V-0/NATURAL	06	PEG	TRAY	RM	2	V	2	2	V	2																		

PIN ID	MATING CONFIGURATION	DIM P
1	MATE FIRST/BREAK LAST	3.5 (.14)
2	STANDARD MATING	3.5 (.14)
3	MATE FIRST/BREAK LAST	4.9 (.19)
4	STANDARD MATING	6.0 (.24)
5	MATE FIRST/BREAK LAST	4.2 (.17)
6	STANDARD MATING	4.2 (.17)
7	STANDARD MATING	2.34 (.092)
8	STANDARD MATING	5.30 (.209)

SEE SHEET 1 EC NO: UCP2011-3503 2011/05/11 DRAWN: NGUYEN 2011/05/11 CHKD: BELL 2011/05/18 APPR: FSMITH 2011/05/18	QUALITY SYMBOLS 	GENERAL TOLERANCES (UNLESS SPECIFIED)		DIMENSION STYLE MM/IN		SCALE 1:1	DESIGN UNITS METRIC	THIRD ANGLE PROJECTION																	
		<table border="1"> <tr> <th></th> <th>mm</th> <th>INCH</th> </tr> <tr> <td>4 PLACES</td> <td>± .15</td> <td>± .005</td> </tr> <tr> <td>3 PLACES</td> <td>± .20</td> <td>± .008</td> </tr> <tr> <td>2 PLACES</td> <td>± 0.38</td> <td>± .015</td> </tr> <tr> <td>1 PLACE</td> <td>± .76</td> <td>± .030</td> </tr> </table>			mm	INCH	4 PLACES	± .15	± .005	3 PLACES	± .20	± .008	2 PLACES	± 0.38	± .015	1 PLACE	± .76	± .030	DRAWN BY POLGAR		DATE 1998/01/23	TITLE MINI-FIT JR RIGHT ANGLE HEADER ASSY CUSTOM HEADERS			
			mm	INCH																					
		4 PLACES	± .15	± .005																					
3 PLACES	± .20	± .008																							
2 PLACES	± 0.38	± .015																							
1 PLACE	± .76	± .030																							
ANGULAR ±1/2°		CHECKED BY BANDURA		DATE 1998/01/28	MOLEX INCORPORATED																				
DRAFT WHERE APPLICABLE MUST REMAIN WITHIN DIMENSIONS		APPROVED BY FSMITH		DATE 2011/05/18	MATERIAL NO. SEE CHART		DOCUMENT NO. SD-44130-001	SHEET NO. 4 OF 4																	

X-ON Electronics

Largest Supplier of Electrical and Electronic Components

Click to view similar products for [Heavy Duty Power Connectors](#) category:

Click to view products by [Molex](#) manufacturer:

Other Similar products are found below :

[1424439](#) [1424438](#) [09330062652](#) [2-8675P1](#) [605601-1](#) [6340G1](#) [6341G1](#) [6360G1](#) [6373G1](#) [6374g2](#) [6396G1](#) [647757-1](#) [66394-4](#) [6643411-1](#)
[6646058-2](#) [6646137-1](#) [6646138-1](#) [6646348-1](#) [6646479-1](#) [6646608-1](#) [6646786-1](#) [6646940-1](#) [6651091-1](#) [6651525-1](#) [6651529-1](#) [6651778-1](#)
[6651788-1](#) [696465-1](#) [696475-1](#) [73000005059](#) [73000005349](#) [73000005642](#) [73080255059](#) [73080965046](#) [765-15-0080A](#) [765-16-0080B](#)
[789.700-44](#) [789.700-54](#) [80-1010](#) [80-9](#) [827381-1](#) [829992-1](#) [902-77-02113](#) [PL00U-301-10D10](#) [PM103MOOLOO](#) [PM16S1620S32-50](#)
[PM212MOOLOO](#) [PM309FOOLOO](#) [PM324FOOLCH](#) [PMHPAF11S03](#)