



Optics Development Kits

APPLICATION

Ease – performance – flexibility – are some of the attributes designed-in to our precision-engineered lenses, sub-lenses and lens holders. Manufactured using optical grade PMMA acrylic, Dialight Lumidrives offers these components in development kits designed for LUXEON®, Osram, Cree and Nichia LEDs. The direct PCB mount version allows for maximum board real-estate, with snap-in lenses in various diffusing patterns (LUXEON I, III, V, K2, and Golden Dragon). Our self-adhesive version is easy to configure and the secondary sub-lenses simply snap-on to the spot base module to provide various diffusing patterns (LUXEON I, III, V, K2, Osram Golden Dragon®, Cree XLamp®, Nichia Jupiter®).



LUXEON L2-KL1 LENS SYSTEM



HOLDERS* (26 TOTAL)			
Dialight P/N	Reference P/N	Description	
OHES1WH	OH-ES1-WH	LUXEON I, III, V & Star I - Direct PCB Mount - White	
OHES1BK	OH-ES1-BK	LUXEON I, III, V & Star I - Direct PCB Mount - Black	
OHES1CL	OH-ES1-CL	LUXEON I, III, V & Star I - Direct PCB Mount - Clear	
OHS35WH	OH-S35-WH	For Drop-Through Mount & LUXEON Star 3 & 5 - White	
OHS35BK	OH-S35-BK	For Drop-Through Mount & LUXEON Star 3 & 5 - Black	
OHS35CL	OH-S35-CL	For Drop-Through Mount & LUXEON Star 3 & 5 - Clear	
LENS			
Dialight P/N	Reference P/N	Description (Qty)	Degree**
OP520	OP-520	Oval Lens (8)	5° X 20°
OP005	OP-005	Spot Lens (8)	5°
OP025	OP-025	Wide Lens (8)	25°
OPFL	OP-FL	Flare Lens (1)	10° X 80°
*Holder colors may vary between kits **All angles refer to half divergence			



OSRAM GOLDEN DRAGON L2-KL2 LENS SYSTEM



HOLDERS			
Dialight P/N	Reference P/N	Description (Qty)	
OHGDBK	OH-GD-BK	Osram Golden Dragon LEDs - Black (10)	
OHGDCL	OH-GD-CL	Suitable for Osram Golden Dragon LEDs - Clear (8)	
OHGDWH	OH-GD-WH	Suitable for Osram Golden Dragon LEDs - White (8)	
LENS			
Dialight P/N	Reference P/N	Description (Qty)	Degree*
OP520	OP-520	Oval Lens (8)	5° X 20°
OP005	OP-005	Spot Lens (8)	5°
OP025	OP-025	Wide Lens (8)	25°
OP015	OP-015	Medium Lens (8)	15°
*All angles refer to half divergence			

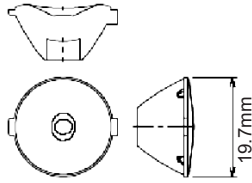
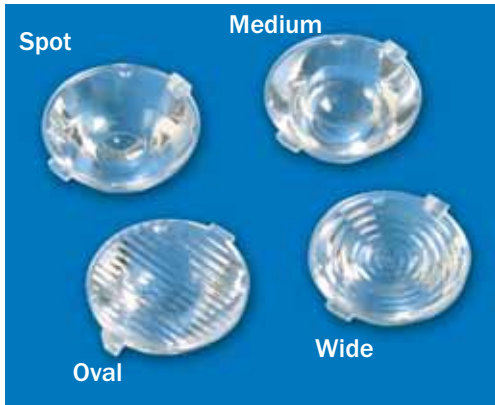
LUXEON K2 L2-KL3 LENS SYSTEM



HOLDERS			
Dialight P/N	Reference P/N	Description (Qty)	
OHK2BK	OH-K2-BK	LUXEON K2 LEDs - Black (10)	
OHK2CL	OH-K2-CL	Suitable for LUXEON K2 LEDs - Clear (8)	
OHK2WH	OH-K2-WH	Suitable for LUXEON K2 LEDs - White (8)	
LENS			
Dialight P/N	Reference P/N	Description (Qty)	Degree*
OP520	OP-520	Oval Lens (8)	5° X 20°
OP005	OP-005	Spot Lens (8)	5°
OP025	OP-025	Wide Lens (8)	25°
OPFL	OP-FL	Flare Lens (1)	10° X 80°
*All angles refer to half divergence			



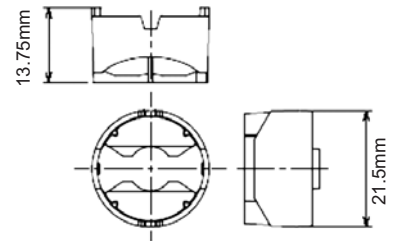
MECHANICAL DRAWINGS



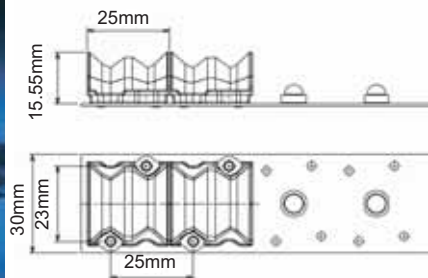
L2 Optics 20mm F-Form Series lenses are made from optical grade PMMA (acrylic) with an optical efficiency of 85% minimum. When used with the appropriate lens holders (below), these are suitable for LUXEON I, III, V and K2 as well as the Osram Golden Dragon range of LEDs.

F-Form Lenses

There are currently 4 different holders for: LUXEON Emitters / Star 1W, Star 3/5W, LUXEON K2 and Osram Golden Dragon. Each of these optic holders is available in clear, white or black.



Lens Holders



The flare lens has been designed for use with all Lumileds™ LUXEON Emitters. These lenses are assembled directly on the PCB without an additional holder.

Flare Lens



OSRAM GOLDEN DRAGON L2-KL4-GD LENS SYSTEM



BASE LENSES			
Dialight P/N	Reference P/N	Description (Qty)	Degree*
OPGD1002	OPGD-1-002	OPGD Series Spot Base Module	2°
SUB-LENSES			
OPAA1DF	OPGD-1-DIF5	OPGD Series Spot Diffuser Sub-Lens (4)	5°
OPAA1WSL	OPGD-1-015S	OPGD Series Wide Sub-Lens (4)	15°
OPAA1OSL	OPGD-1-427S	OPGD Series Oval Sub-Lens (4)	4° X 27°
*All angles refer to half divergence			

CREE XLAMP 7090 L2-KL5-XL LENS SYSTEM



BASE LENSES			
Dialight P/N	Reference P/N	Description (Qty)	Degree*
OPTX1006	OPTX-1-006	OPTX Series Spot Base Module (4)	6°
SUB-LENSES			
OPAA1DF	OPTX-1-DIF8	OPTX Series Spot Diffuser Sub-Lens (4)	8°
OPAA1WSL	OPTX-1-016S	OPTX Series Wide Sub-Lens (4)	16°
OPAA1OSL	OPTX-1-825S	OPTX Series Oval Sub-Lens (4)	8° X 25°
*All angles refer to half divergence			



NICHIA JUPITER L2-KL6-IO LENS SYSTEM



BASE LENSES			
Dialight P/N	Reference P/N	Description (Qty)	Degree*
OPIO1011	OPIO-1-011	OPIO Series Spot Base Module	11°
SUB-LENSES			
OPAA1DF	OPIO-1-DIF13	OPIO Series Spot Diffuser Sub-Lens (4)	13°
OPAA1WSL	OPIO-1-018S	OPIO Series Wide Sub-Lens (4)	18°
OPAA1OSL	OPIO-1-1224S	OPIO Series Oval Sub-Lens (4)	12° X 24°
*All angles refer to half divergence			

LUXEON K2 L2-KL7-K2 LENS SYSTEM



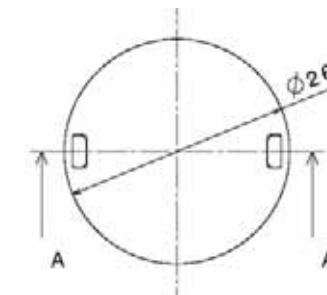
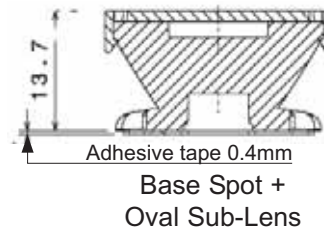
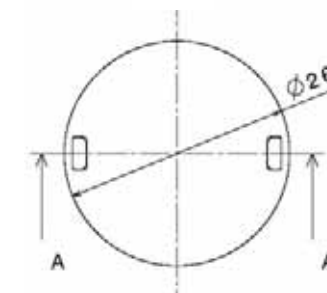
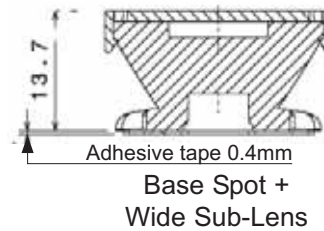
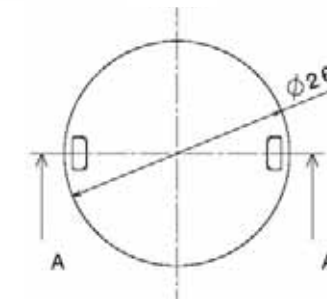
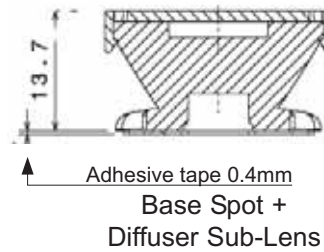
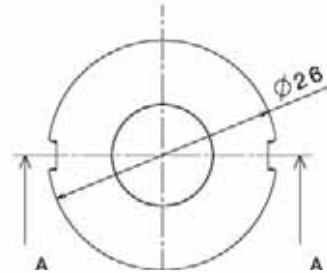
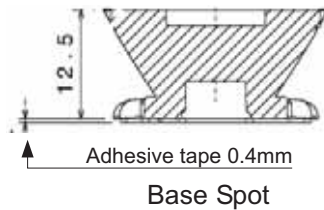
BASE LENSES			
Dialight P/N	Reference P/N	Description (Qty)	Degree*
OPK21003	OPK2-1-003	OPK2 Series Spot Base Module (4)	3°
SUB-LENSES			
OPAA1DF	OPK2-1-DIF6	OPK2 Series Spot Diffuser Sub-Lens (4)	6°
OPAA1WSL	OPK2-1-012S	OPK2 Series Wide Sub-Lens (4)	12°
OPAA1OSL	OPK2-1-427S	OPK2 Series Oval Sub-Lens (4)	4° X 27°
*All angles refer to half divergence			



APPLICATION

OPT Series 1 base spot lenses position easily and accurately over the LED. They are easy to fix onto the PCB using the integral self-adhesive pad. The snap-on sub lenses attach easily, are very secure and do not move or drop out once in place. There are three different sub-lens illumination patterns available : diffused, wide and oval.

MECHANICAL DRAWINGS



Note: Above Base Spot dimensions are for Cree, Golden Dragon, LUXEON K2.
For Nichia - Base Spot dimension is 13.3mm (plus lenses).





■ **Dialight Corporate Office**
1501 Rt 34 South
Farmingdale, NJ 07727 USA
Tel: +1.732.919.3119
Fax: +1.732.751.5778
Email: info@dialight.com

■ **Dialight Lumidrives Ltd**
York House
Wetherby Road
Long Marston, UK
YO26 7NH
Tel: +44(0)1423.798255
Fax +44(0)1423.798266
Email: sales@lumidrives.com

X-ON Electronics

Largest Supplier of Electrical and Electronic Components

Click to view similar products for [Tool Kits & Cases](#) category:

Click to view products by [Dialight](#) manufacturer:

Other Similar products are found below :

[AM3310HLX23GXS](#) [229668-1](#) [217434-1](#) [QB-78K0RKE3L-TB](#) [4263](#) [1055420-1](#) [11-18-3023](#) [63860-8170](#) [856600-2](#) [11-40-3247](#) [63883-2870](#) [63866-1070](#) [63865-5170](#) [63863-5070](#) [63892-7370](#) [11-18-3209](#) [63860-4070](#) [63881-0970](#) [A0403641](#) [11-18-3040](#) [63865-2070](#) [63910-1470](#) [11-11-0387](#) [63850-7470](#) [11-18-3201](#) [63910-7570](#) [FM 0501 146](#) [63883-0670](#) [63830-0070](#) [63901-2670](#) [11-18-3147](#) [11-18-3079](#) [63883-2670](#) [63900-1770](#) [11-18-3190](#) [63851-1070](#) [63912-4770](#) [63911-5270](#) [63895-1070](#) [63860-1470](#) [63850-6070](#) [1-69411-3](#) [63852-9270](#) [63802-6270](#) [11-18-3202](#) [63852-9170](#) [63850-1070](#) [63830-0170](#) [11-18-3016](#) [63910-2870](#)