



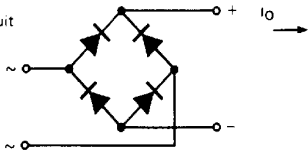
## KBPC1, KBPC6 SERIES

### 3A, 6A single phase rectifier bridges

#### Maximum Ratings

	KBPC1	KBPC6	Units
$I_O$	3	6	A
$I_{FSM}$	50Hz	50	A
	60Hz	55	A
$I^2t$	50Hz	12.5	A <sup>2</sup> s
	60Hz	11.4	A <sup>2</sup> s
$V_{RRM}$	50 to 1000		V

Circuit



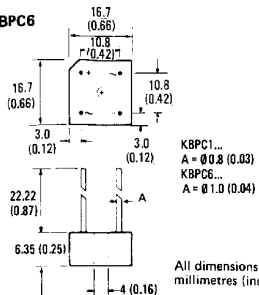
#### Description

3A and 6A single phase encapsulated bridge rectifiers consisting of four single diodes connected as a full bridge. They are suitable for general applications in industrial and consumer equipment.

#### Features

- Suitable for printed circuit board or chassis mounting
- Compact construction
- High surge current capability

#### KBPC1, KBPC6



## Electrical Specifications

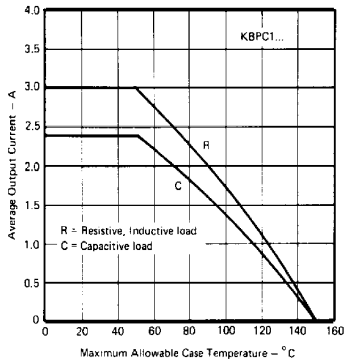
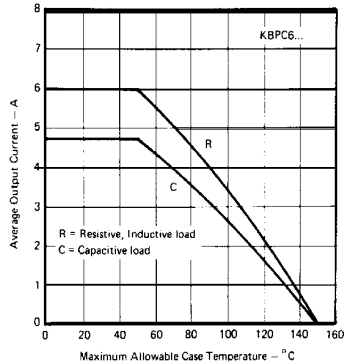
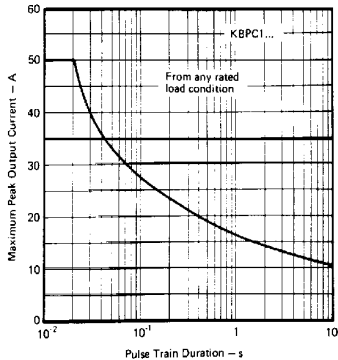
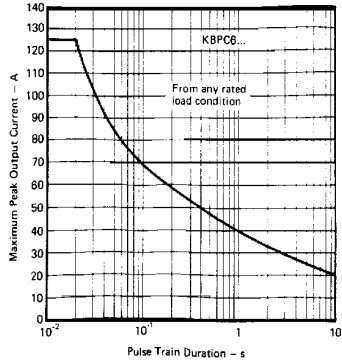
	KBPC1	KBPC6	Units	Conditions
$I_O$ Maximum DC Output current	3.0	6.0	A	$T_c = 50^\circ\text{C}$ , Resistive and inductive load
	2.4	4.7	A	$T_c = 50^\circ\text{C}$ , capacitive load
$I_{FSM}$ Maximum peak one cycle, non-repetitive surge current	50	125	A	$t = 10\text{ms}, 20\text{ms}$ Following any rated load condition and with rated $V_{RRM}$ reapplied
	55	137	A	$t = 8.3\text{ms}, 16.7\text{ms}$
$I^2t$ Maximum $I^2t$ capability for fusing	12.5	78	$A^2s$	$t = 10\text{ms}$ Initial $T_J = T_J \text{ max}$ 100% $V_{RRM}$ reapplied
	11.4	71	$A^2s$	$t = 8.3\text{ms}$
	17.7	110	$A^2s$	$t = 10\text{ms}$ Initial $T_J = T_J \text{ max}$ No voltage reapplied
	16.1	100	$A^2s$	$t = 8.3\text{ms}$
$I^2\sqrt{t}$ Maximum $I^2\sqrt{t}$ capability for fusing	177	1105	$A^2\sqrt{s}$	$t = 0.1$ to $10\text{ms}$ , No voltage reapplied
$V_{FM}$ Maximum peak forward voltage per diode	1.1	1.2	V	$I_{FM} = 0.5 \times I_O$ , $T_J = 25^\circ\text{C}$
$I_{RM}$ Typical peak reverse leakage current per diode	10	10	$\mu\text{A}$	$T_J = 25^\circ\text{C}$
	1.0	1.0	mA	$T_J = 150^\circ\text{C}$ 100% $V_{RRM}$
f Operating frequency range	40 to 1000		Hz	

## Thermal and Mechanical Specifications

	KBPC1	KBPC6	Units	Conditions
$T_J$ Operating temperature range	-40 to 150		$^\circ\text{C}$	
$T_{stg}$ Storage temperature range	-40 to 150		$^\circ\text{C}$	
W Approximate weight	5 (0.18)	6 (0.21)	g (oz)	

## Voltage Specifications

Part number	$V_{RRM}$ Maximum repetitive peak reverse voltage	$V_{RSM}$ Maximum non-repetitive peak reverse voltage	$V_{RMS}$ Maximum recommended RMS supply voltage
	V	V	V
KBPC1005 KBPC6005	50	50	20
KBPC102 KBPC602	200	200	80
KBPC104 KBPC604	400	400	125
KBPC106 KBPC606	600	600	250
KBPC108 KBPC608	800	800	380
KBPC110 KBPC610	1000	1000	500

**Fig. 1 – Case Temperature Ratings**

**Fig. 2 – Case Temperature Ratings**

**Fig. 3 – Non-Repetitive Surge Ratings**

**Fig. 4 – Non-Repetitive Surge Ratings**


## X-ON Electronics

Largest Supplier of Electrical and Electronic Components

*Click to view similar products for [vishay](#) manufacturer:*

Other Similar products are found below :

[M39006/22-0577H](#) [Y00892K49000BR13L](#) [VS-12CWQ10FNPBF](#) [M8340109M6801GGD03](#) [VS-MBRB1545CTPBF](#) [1KAB100E](#)  
[CRCW1210360RFKEA](#) [VSMF4720-GS08](#) [CRCW04024021FRT7](#) [001789X](#) [LTO050FR0500JTE3](#) [CRCW0805348RFKEA](#)  
[LVR10R0200FE03](#) [CRCW12063K30FKEAHP](#) [009923A](#) [CRCW2010331JR02](#) [CRCW25128K06FKEG](#) [CS6600552K000B8768](#) [M39003/01-2289](#) [M39003/01-2784](#) [M39006/25-0133](#) [M39006/25-0228](#) [M64W101KB40](#) [M64Z501KB40](#) [CW001R5000JS73](#) [CW0055R000JE12](#)  
[CW0056K800JB12](#) [CW0106K000JE73](#) [672D826H075EK5C](#) [CWR06JC105KC](#) [CWR06NC475JC](#) [MAL219699001E3](#)  
[MCRL007035R00JHB00](#) [PTF56100K00QYEK](#) [PTN0805H1502BBTR1K](#) [RCL12252K20JNEG](#) [RCWL1210R130JNEA](#) [RH005220R0FE02](#)  
[RH005330R0FC02](#) [RH010R0500FC02](#) [132B20103](#) [RH1007R000FJ01](#) [RH2503R500FE01](#) [RH254R220FS03](#) [RH-50-40R2-1%-C02](#)  
[134D336X9075C6](#) [132B00301](#) [135D277X0025F6](#) [DG202BDY-T1-E3](#) [DG9426EDQ-T1-GE3](#)