

Double Row Terminal Blocks

621 RZ Series

600 Volts AC/DC (Classes B/C)



621 RZ 06

Specifications:

- Base, Thermoplastic, 125°C (UL RTI)
- Closed Back Design
- Screws, #6-32 Binder Head, Phil-Slot, Steel
- Terminals, Plated Brass
- 1-30 Poles
- 7/16" Centers
- Wire Range With Wire Binding Screw #12 - #22 AWG – 20 Amps
- Wire Range With Sems Pressure Screw #12 - #22 AWG Stranded Copper Wire Only, 20 Amps
- UL Recognized File No. XCFR2.E62806
- CSA Certified File No. LR19766
- CE
- RoHS Compliant

MSP		Dimensions	
Catalog #	# of poles	A	B
621 RZ 01	1	1.19	0.88
621 RZ 02	2	1.62	1.31
621 RZ 03	3	2.06	1.75
621 RZ 04	4	2.50	2.19
621 RZ 05	5	2.94	2.63
621 RZ 06	6	3.37	3.06
621 RZ 07	7	3.81	3.50
621 RZ 08	8	4.25	3.94
621 RZ 09	9	4.69	4.38
621 RZ 10	10	5.12	4.81
621 RZ 11	11	5.56	5.25
621 RZ 12	12	6.00	5.69
621 RZ 13	13	6.44	6.13
621 RZ 14	14	6.87	6.56
621 RZ 15	15	7.31	7.00
621 RZ 16	16	7.75	7.44
621 RZ 17	17	8.19	7.88
621 RZ 18	18	8.62	8.31
621 RZ 19	19	9.06	8.75
621 RZ 20	20	9.50	9.19
621 RZ 21	21	9.94	9.63
621 RZ 22	22	10.37	10.06
621 RZ 23	23	10.81	10.50
621 RZ 24	24	11.25	10.94
621 RZ 25	25	11.69	11.38
621 RZ 26	26	12.12	11.81
621 RZ 27	27	12.56	12.25
621 RZ 28	28	13.00	12.69
621 RZ 29	29	13.44	13.13
621 RZ 30	30	13.87	13.56

mm=dim X 25.4

For electronic drawings or 2D/3D CAD data, submit request at www.marathonsp.com/drawings.html

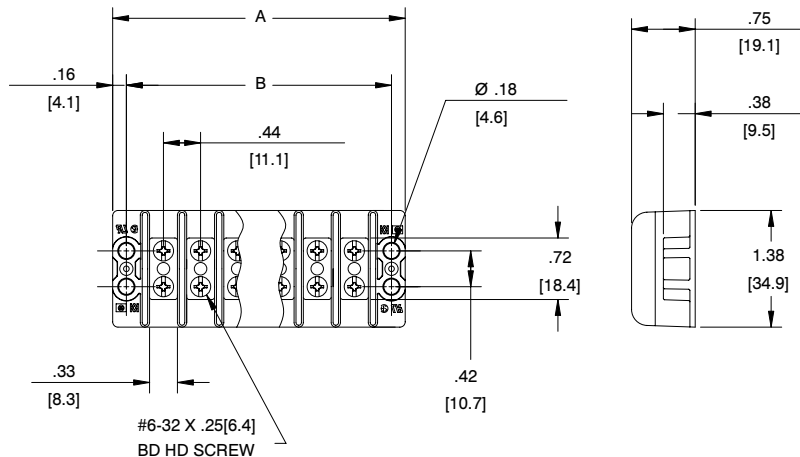
Hardware Options:

(Hardware options may affect ratings - consult Customer Service)

CATALOG #	PRODUCT DESCRIPTION	PAGE REFERENCE
MSP		
KULKA		
KT37	Full Quick Connect (0° Flat)	See page 105
KT38	Full Quick Connect (45° Bend)	See page 105
KT39	Full Quick Connect (90° Bend)	See page 105
KT43	Half Quick Connect (0° Flat)	See page 105
KT44	Half Quick Connect (45° Bend)	See page 105
KT45	Half Quick Connect (90° Bend)	See page 105
ST	Full Solder	See page 106
3/4 ST	Half Solder	See page 106
J 621	Line to Line Jumper	See page 107
601RJ(S)	Multiple Position Jumper	See page 107
3765	SEMS Pressure Saddle Screw	See page 107
3767	SEMS Pressure Saddle Screw with External Tooth Lock Washer	Consult C/S
PSB	Phil-Slot Brass Screw	Consult C/S

Quick Connects: .032" x .250"

See pages 104-115 for terminal block accessories



X-ON Electronics

Largest Supplier of Electrical and Electronic Components

Click to view similar products for [marathon manufacturer](#):

Other Similar products are found below :

[104](#) [599-GP-2004-10](#) [600-2004-3-SP](#) [600-GP-20](#) [600TS-10](#) [601-GP-2102-02](#) [601-GP-3/4ST-12](#) [601-GPYSY-03](#) [601-JJ-06](#) [602-GPYSY-22](#)
[603-2302-04](#) [603-JJ-04](#) [603-JJ-07](#) [604-JJ-06](#) [605-GP-03SLB](#) [605-JJ-02](#) [651-XPR-13](#) [670-3/4ST-9](#) [670A-GP-3000-18](#) [670A-GP-3000-25](#)
[670A-GP-3000-27](#) [670A-GP-3/4ST-10](#) [670-GP-19](#) [CW205-01C](#) [671-RZ-25](#) [672-GPY-05](#) [672-RZ-24](#) [699-GP-2102-08](#) [699-GP-2120-12](#)
[6F30A3S](#) [6H38-TSKK-C](#) [6R30A3SP](#) [F600A1B](#) [F600A3B](#) [F60A1B](#) [799-6-KT28](#) [799-7-KT28](#) [FPB33588](#) [8TBJ02](#) [R30A1B](#) [RF400A3B](#)
[1321970](#) [1322970CH](#) [1320972](#) [1331955](#) [1332270](#) [1332554CH](#) [1333280CH](#) [1333575CH](#) [1353701](#)