

**PLEASE CHECK WWW.MOLEX.COM FOR LATEST PART INFORMATION**

**Part Number:** **0757051603**  
**Status:** **Active**  
**Overview:** GbX I-Trac Backplane Connector System  
**Description:** GbX I-Trac Vertical Header Module, 1.85mm by 3.70mm Pitch, Unguided, Open Ends, 11 Rows, 6 Columns, 132 Circuits, Mating Pin Length 4.70mm

**Documents:**

[3D Model](#) [Packaging Specification PK-70873-587 \(PDF\)](#)  
[Drawing \(PDF\)](#) [RoHS Certificate of Compliance \(PDF\)](#)  
[Product Specification PS-75710-999-001 \(PDF\)](#)

**Agency Certification**

UL E29179

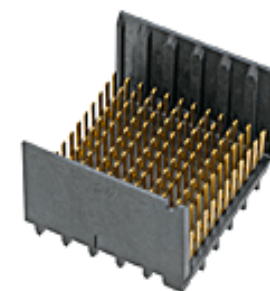
**General**

Product Family Backplane Connectors  
Series [75705](#)  
Application Backplane, Midplane, Orthogonal  
Component Type PCB Header  
Overview [GbX I-Trac Backplane Connector System](#)  
Product Name GbX I-Trac  
UPC 822350290357

**Physical**

Circuits (Loaded) 132  
Circuits (maximum) 132  
Color - Resin Black  
Durability (mating cycles max) 200  
First Mate / Last Break No  
Flammability 94V-0  
Guide to Mating Part No  
Keying to Mating Part None  
Material - Metal High Performance Alloy (HPA)  
Material - Plating Mating Gold  
Material - Plating Termination Tin  
Material - Resin High Temperature Thermoplastic  
Net Weight 4.050/g  
Number of Columns 6  
Number of Pairs 6, Open Pin Field  
Number of Rows 11  
Orientation Vertical  
PC Tail Length 2.10mm  
PCB Locator No  
PCB Retention None  
PCB Thickness - Recommended 1.60mm  
Packaging Type Tray  
Pitch - Mating Interface 1.85mm, 3.70mm  
Pitch - Termination Interface 1.00mm, 2.70mm  
Plating min - Mating 0.762µm  
Plating min - Termination 0.762µm  
Polarized to PCB No  
Stackable Yes  
Surface Mount Compatible (SMC) Yes  
Temperature Range - Operating -55° to +80°C  
Termination Interface: Style Through Hole - Compliant Pin

**Electrical**



Series image - Reference only

**EU ELV**

**Not Relevant**

**EU RoHS**

**Compliant**

**REACH SVHC**

Not Contained Per -  
ED/61/2018 (27 June  
2018)

**Halogen-Free**

**Status**

**Low-Halogen**

For more information, please visit [Contact US](#)

China ROHS

ELV

RoHS Phthalates

**China RoHS**

Green Image

Not Relevant

Not Contained

**Search Parts in this Series**

[75705](#) Series

**Mates With**

[75710](#) GbX I-Trac Right Angle Receptacle Module

**Use With**

[78232](#) GbX I-Trac Vertical Power Receptacle. [75234](#) Backplane Free Standing Guide Pin

|                               |                  |
|-------------------------------|------------------|
| Current - Maximum per Contact | 1.0A             |
| Data Rate                     | 12.0 Gbps        |
| Real Signals (per 25mm)       | 148              |
| Shield Type                   | N/A              |
| Shielded                      | No               |
| Voltage - Maximum             | 120V AC (RMS)/DC |

**Solder Process Data**

|                             |     |
|-----------------------------|-----|
| Lead-freeProcess Capability | N/A |
|-----------------------------|-----|

**Material Info****Reference - Drawing Numbers**

|                         |                  |
|-------------------------|------------------|
| Packaging Specification | PK-70873-587     |
| Product Specification   | PS-75710-999-001 |
| Sales Drawing           | SD-75705-001     |

This document was generated on 10/08/2018

**PLEASE CHECK [WWW.MOLEX.COM](http://WWW.MOLEX.COM) FOR LATEST PART INFORMATION**

## X-ON Electronics

Largest Supplier of Electrical and Electronic Components

*Click to view similar products for [High Speed/Modular Connectors](#) category:*

*Click to view products by [Molex](#) manufacturer:*

Other Similar products are found below :

[2332816-1](#) [89006-1137LF](#) [650827-1](#) [65762-001LF](#) [73474-201LF](#) [74040-1346](#) [74075-0267](#) [1410191-1](#) [1410337-1](#) [1410368-3](#) [1410964-2](#)  
[1410367-3](#) [1410971-4](#) [1467833-1](#) [2000877-1](#) [2000878-1](#) [2041314-1](#) [2065387-1](#) [2187307-1](#) [2187462-1](#) [2226278-6](#) [KA81-07](#) [91290-101LF](#)  
[163P](#) [1934290-1](#) [2000875-1](#) [2065917-1](#) [2102736-2](#) [FSR-40](#) [2169868-2](#) [2226279-2](#) [22354-8](#) [437-5040-000](#) [5-1393565-0](#) [532449-3](#) [532803-](#)  
[2](#) [34745-0001](#) [0736440217](#) [1-1393708-5](#) [72388-0021LF](#) [73774-1000](#) [532939-1](#) [5-531355-3](#) [5532901-3](#) [85838-180LF](#)  
[HM1S43TRR460H6PLF](#) [0760205010](#) [1-966831-4](#) [3-1469268-7](#) [77427-121LF](#)