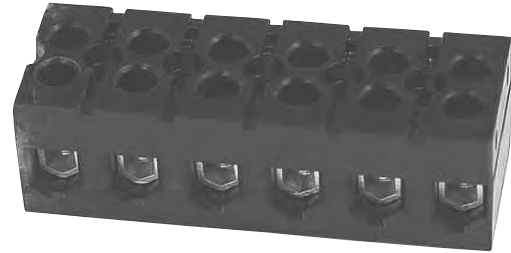


# Heavy Duty Terminal Blocks

## 985 GP Series - Deadfront Type

600 Volts AC/DC (UL/CSA)



985 GP 06

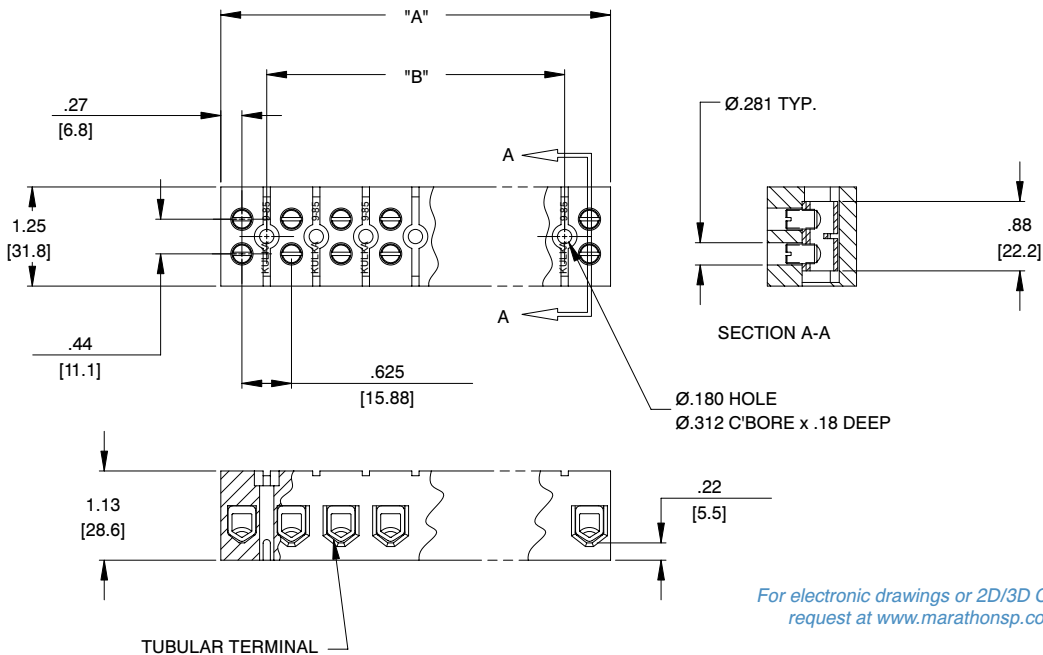
### Specifications:

- Base, General Purpose Phenolic, 150°C (UL RTI)
- Connector, Aluminum, Tin (Sn) Plated
- Screws, Steel, Tin (Sn) Plated
- Current Rating up to **85 Amps**
- Wire Range #4-#18 AWG Copper Wire
- Multiple Wire Combinations For Solid or Stranded Copper Wire Are:
  - (1) #4 AWG
  - (1) #6 AWG
  - (1 - 2) #8 AWG
  - (1 - 4) #10 AWG
  - (1 - 4) #12 AWG
  - (1 - 6) #14 AWG
  - (1 - 6) #16 AWG
  - (1 - 8) #18 AWG
- 5/8" (.625") Center-Line Spacing
- UL Recognized File No. XCFR2.E47811
- CSA Certified File No. LR19766
- **CE** - 630 Volts
- RoHS Compliant

Catalog #	# of poles	Dimensions	
		A	B
985 GP 02	2	1.16	N/A
985 GP 03	3	1.78	0.63
985 GP 04	4	2.41	1.25
985 GP 05	5	3.03	1.88
985 GP 06	6	3.66	2.50
985 GP 07	7	4.28	3.13
985 GP 08	8	4.91	3.75
985 GP 09	9	5.53	4.38
985 GP 10	10	6.16	5.00
985 GP 11	11	6.78	5.63
985 GP 12	12	7.41	6.25

See page 35 for DIN Rail Adapter

mm = dim X 25.4



For electronic drawings or 2D/3D CAD data, submit request at [www.marathonsp.com/drawings.html](http://www.marathonsp.com/drawings.html)

## X-ON Electronics

Largest Supplier of Electrical and Electronic Components

*Click to view similar products for [marathon manufacturer](#):*

Other Similar products are found below :

[104](#) [599-GP-2004-10](#) [600-2004-3-SP](#) [600-GP-20](#) [600TS-10](#) [601-GP-2102-02](#) [601-GP-3/4ST-12](#) [601-GPYSY-03](#) [601-JJ-06](#) [602-GPYSY-22](#)  
[603-2302-04](#) [603-JJ-04](#) [603-JJ-07](#) [604-JJ-06](#) [605-GP-03SLB](#) [605-JJ-02](#) [651-XPR-13](#) [670-3/4ST-9](#) [670A-GP-3000-18](#) [670A-GP-3000-25](#)  
[670A-GP-3000-27](#) [670A-GP-3/4ST-10](#) [670-GP-19](#) [CW205-01C](#) [671-RZ-25](#) [672-GPY-05](#) [672-RZ-24](#) [699-GP-2102-08](#) [699-GP-2120-12](#)  
[6F30A3S](#) [6H38-TSKK-C](#) [6R30A3SP](#) [F600A1B](#) [F600A3B](#) [F60A1B](#) [799-6-KT28](#) [799-7-KT28](#) [FPB33588](#) [8TBJ02](#) [R30A1B](#) [RF400A3B](#)  
[1321970](#) [1322970CH](#) [1320972](#) [1331955](#) [1332270](#) [1332554CH](#) [1333280CH](#) [1333575CH](#) [1353701](#)