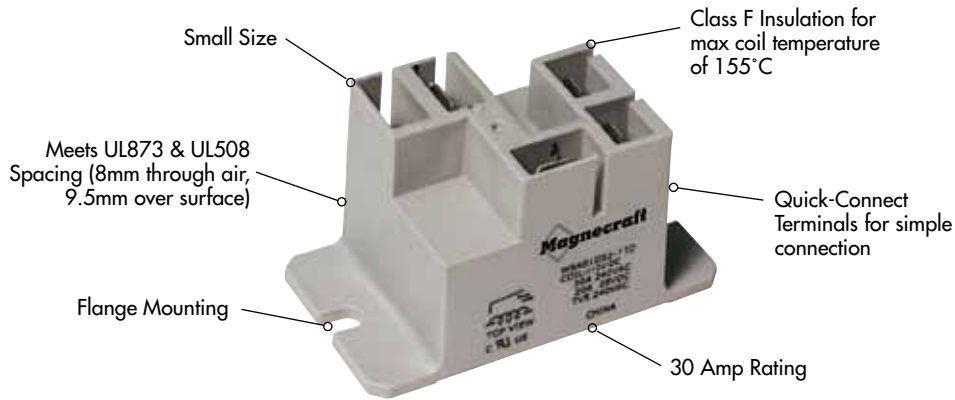


## 9A Miniature Power Relays/SPST and SPDT 30 Amp Rating (DC and AC)

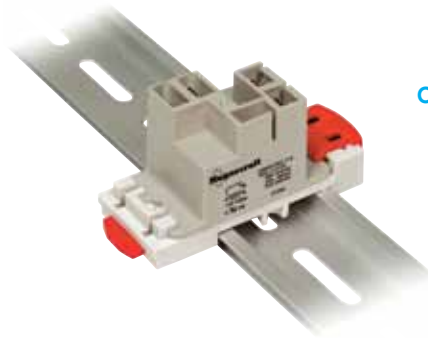


### General Specifications

(UL 508)

SPST

Contact Characteristics		Units	9AS1
Number and type of Contacts			SPST-NO
Contact materials			Silver Alloy
Thermal (Carrying) Current		A	30
Maximum Switching Voltage		V	300V
Switching Current @ Voltage	~	Resistive	30A @ 240V 50/60Hz
	⎓	Resistive	30A @ 28V
		HP	2 @ 240V 50/60Hz
		HP	1 @ 125V 50/60Hz
		Pilot Duty	470 VA
Minimum Switching Requirement	Minimum	mA	100 @ 5 VDC, 12 VAC
Coil Characteristics			
Voltage Range		V	12...277
	% of Nominal	V	5...110
Operating Range			85% to 120%
			75% to 120%
Average consumption		VA	2.8
		W	1
Drop-out voltage threshold			10%
			10%
Performance Characteristics			
Electrical Life (UL 508)	Operations @ Rated Current	(Resistive)	100,000
Mechanical Life	Unpowered		10,000,000
Operating time (response time)		ms	15
Dielectric	Between coil and contact	V	2500
	Between contacts	V	1500
Environment			
Product certifications	Standard version		UL
Ambient air temperature around the device	Storage	°C	-40...+85
	Operation	°C	-40...+55
Vibration resistance	Operational	g-n	3, 10-55Hz
Shock resistance		g-n	10
Weight		grams	33

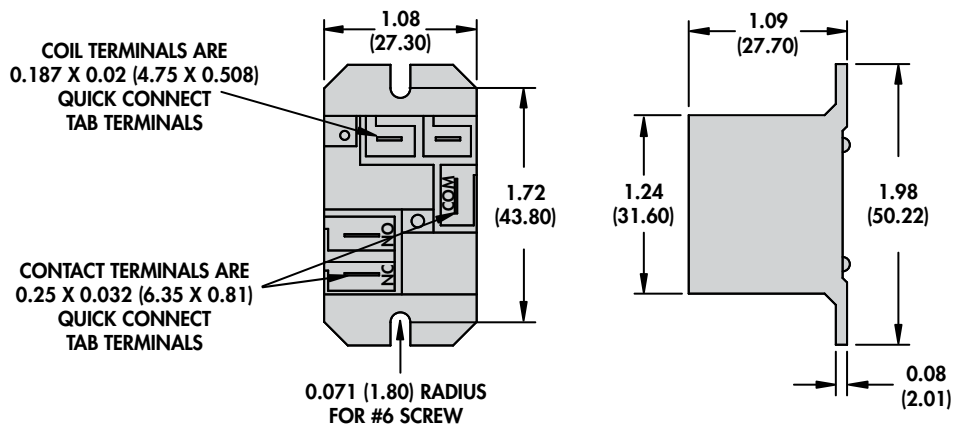
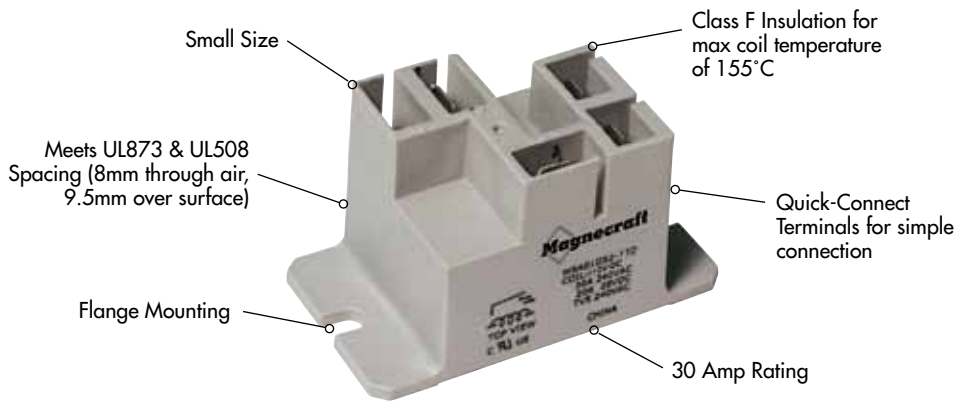


Optional DIN Rail Adapter  
(16-9ADIN-1)  
See Section 3 p.17

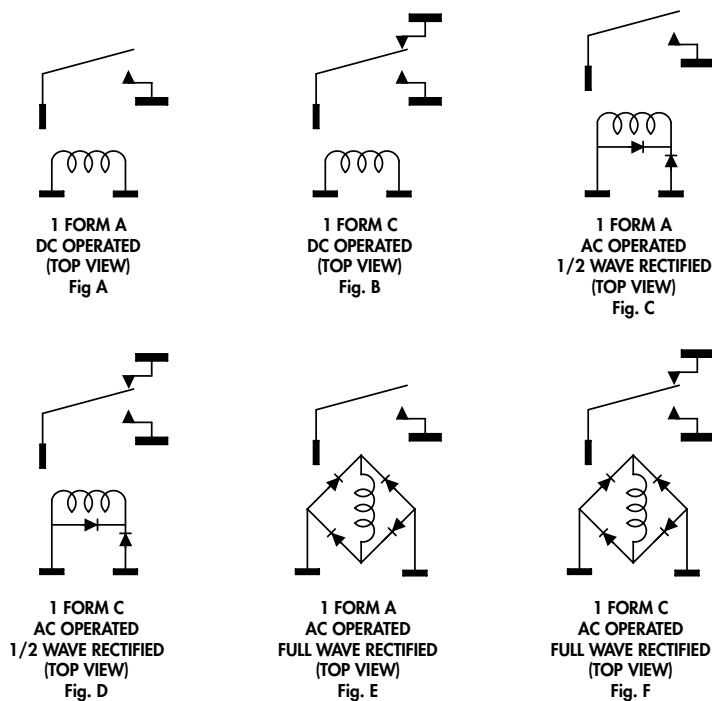
**SPDT**

Normally Open Contact	Normally Closed Contact
Silver Alloy	Silver Alloy
30	15
300V	300V
30A @ 240V 50/60Hz	15A @ 240 50/60Hz Max
30A @ 28V	10A @ 28V
2 @ 240V 50/60Hz	1/2 @ 240 V 50/60Hz
1 @ 125V 50/60Hz	1/4 @ 125 V 50/60Hz
470 VA	275 VA
100 @ 5 VDC, 12 VAC	100 @ 5 VDC, 12 VAC
12...277	
5...110	
85% to 120%	
75% to 120%	
2.8	
1	
10%	
10%	
100,000	
10,000,000	
15	
2500	
1500	
UL	
-40...+85	
-40...+55	
3, 10-55Hz	
10	
33	

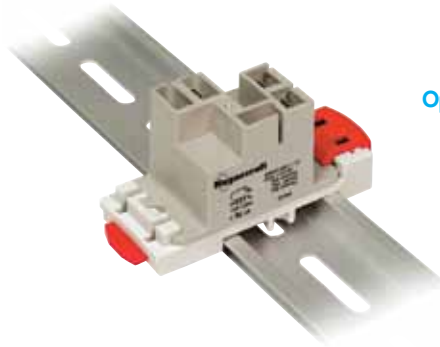
# 9A Miniature Power Relays/SPST and SPDT 30 Amp Rating (DC and AC) *continued*



## WIRING DIAGRAMS



SECTION 6



Optional DIN Rail Adapter  
(16-9ADIN-1)  
See Section 3 p.17

**Standard Part Numbers**

**BOLD-FACED PART NUMBERS ARE NORMALLY STOCKED**

Nominal Input Voltage	Coil Resistance (OHMS)	Part Number	Figure	Contact Configuration
<b>SPST DC Relays</b>				
5 VDC	25 Ω	<b>9AS1D52-5</b>	A	SPST-NO
12 VDC	144 Ω	<b>9AS1D52-12</b>	A	SPST-NO
24 VDC	576 Ω	<b>9AS1D52-24</b>	A	SPST-NO
110/125 VDC	12100 Ω	9AS1D52-110	A	SPST-NO
<b>SPDT DC Relays</b>				
5 VDC	25 Ω	<b>9AS5D52-5</b>	B	SPDT
12 VDC	144 Ω	<b>9AS5D52-12</b>	B	SPDT
24 VDC	576 Ω	<b>9AS5D52-24</b>	B	SPDT
110/125 VDC	12100 Ω	9AS5D52-110	B	SPDT
<b>SPST AC Relays</b>				
24 VAC 50/60 Hz	500 Ω	<b>9AS1A52-24</b>	E	SPST-NO
120 VAC 50/60 Hz	3000 Ω	<b>9AS1A52-120</b>	C	SPST-NO
240 VAC 50/60 Hz	12100 Ω	9AS1A52-240	C	SPST-NO
<b>SPDT AC Relays</b>				
24 VAC 50/60 Hz	500 Ω	<b>9AS5A52-24</b>	F	SPDT
120 VAC 50/60 Hz	3000 Ω	<b>9AS5A52-120</b>	D	SPDT
240 VAC 50/60 Hz	12100 Ω	<b>9AS5A52-240</b>	D	SPDT

**Part Number Builder**

Series	Cover	Configuration	Current Type	Mount	Contact Material	Voltage
9A	P = Enclosed dust cover S = Sealed dust cover	1 = SPST-NO 5 = SPDT	A = AC D = DC	5 = Panel Mount Flanged Cover	2 = Silver Alloy	Coil Voltage

## X-ON Electronics

Largest Supplier of Electrical and Electronic Components

*Click to view similar products for [schneider manufacturer](#):*

Other Similar products are found below :

[LU9M1](#) [7D](#) [7S](#) [7XA1](#) [FNQR2](#) [8501RS44V24](#) [8501RSD14P14V51](#) [8501XO20V03Y414](#) [9001KXRK](#) [9001SKR9P35RH25](#) [9001SKT35L31](#)  
[9003K2C003GA](#) [9007AA1](#) [9007BA1](#) [9007C54D](#) [9007C62A2](#) [9007CA11](#) [9007FA3](#) [9007HA4](#) [9007HA6](#) [9007KA1](#) [9007KB11](#)  
[9007MS01S0206](#) [9007MS02S0300](#) [9012GAR4](#) [9012GAW2](#) [9012GBW1](#) [9012GDW5E3](#) [9012GFW1](#) [9012GNG1](#) [9012GNG3](#) [9012GNG6](#)  
[9013FHG39J69](#) [9013GHG2J30](#) [9050JCK2F30V14](#) [GV2P10](#) [GVAN20](#) [GZ1E02](#) [A9F04616](#) [ABL8RPS24030](#) [RMPT20BD](#) [ATS01N206QN](#)  
[CAD32BD](#) [CAD32F7](#) [CAD50BD](#) [CAD50P7](#) [RSL1PRJU](#) [9001KA35](#) [9001KA3G](#) [9001KA4](#)