

# Subminiature Pushbutton Switches



## Specifications:

Contact rating:	max. 48 V AC/DC, 0,4 VA / max. 50 mA min. 20 mV AC/DC, 1 $\mu$ A
Contact resistance:	< 50 m $\Omega$
Insulation resistance:	> 500 M $\Omega$ at 250 V DC
Dielectric strength:	500 V, 50 Hz for the duration of 1 minute
Operating temperature:	- 20° to + 80° C
Mechanical life:	minimum 60000 operations
Contacts:	phosphor bronze, gold-plated over nickel barrier
Terminals:	APE – PC terminals, crimped, phosphor bronze, tin-plated over nickel barrier AP – PC terminals, phosphor bronze, gold-plated over nickel barrier
Material:	case: PBT, meets UL 94 V-0, washable metal parts: brass, nickel-plated
Mounting:	on pc-board
Soldering conditions:	auto-soldering – max.: 3 sec, 245° C $\pm$ 10° C

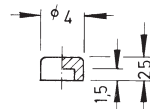
3

The stability can be improved by using a supporting bracket.

## Accessories:

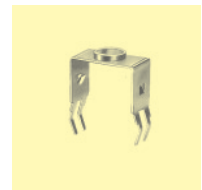
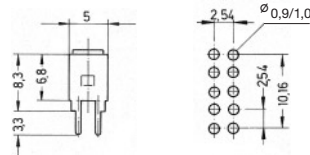
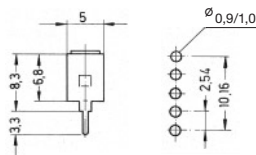
### Plastic caps

black	KA 3105
green	KA 3106
grey	KA 3107
yellow	KA 3108
red	KA 3109
white	KA 3110



Supporting bracket for AP/APE 1.  
Order number AZ 0001

APE 2 F  
AZ 0005

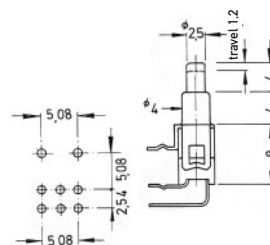


### Special pin configuration:

Subminiature pushbutton switch  
with 5,08 mm spacing

Additional to type number: – 1

Example of order: APE 2 F – RA – 1





# Subminiature Pushbutton Switches

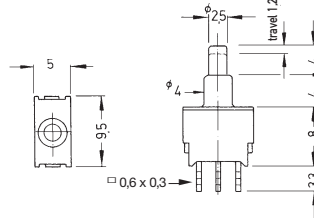
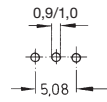
**Models:** Switching functions: when looking at the brand name,  
the normally closed contact is on the right-hand side

washable

SPDT

APE 1 F

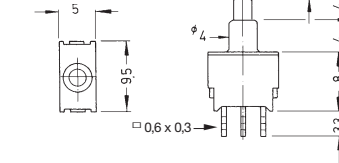
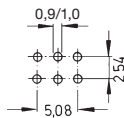
on - mom



DPDT

APE 2 F

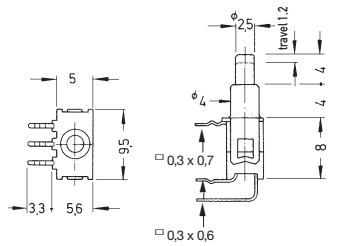
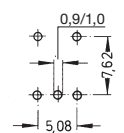
on - mom



SPDT

APE 1 F - RA

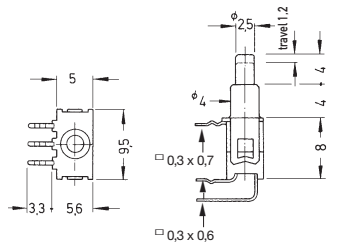
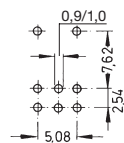
on - mom



DPDT

APE 2 F - RA

on - mom



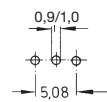
SPDT

AP 1 C

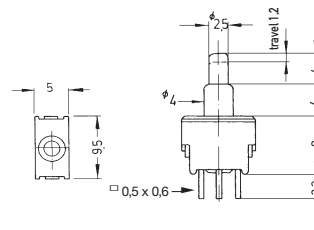
off - mom

AP 1 F

on - mom



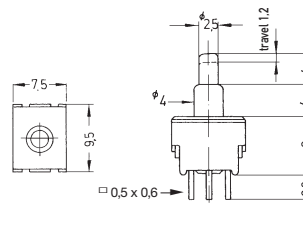
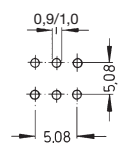
AP 1 C  
no center terminal



DPDT

AP 2 R

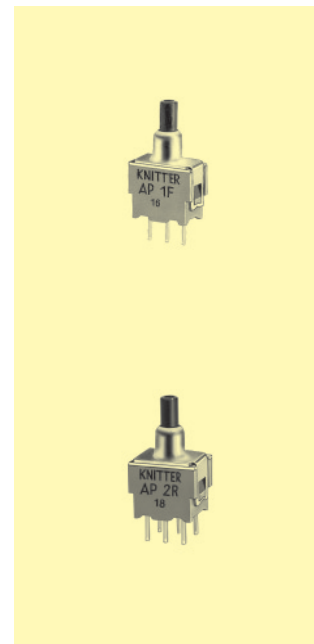
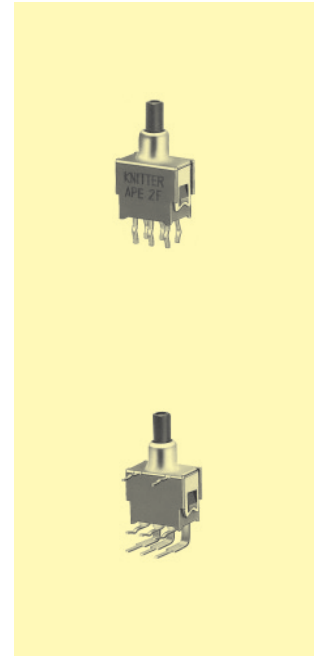
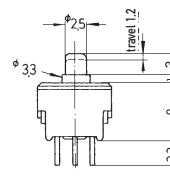
on - mom



Subminiature pushbutton switches with short necktube

Additional to type number: K

Example of order: AP 1 FK



## X-ON Electronics

Largest Supplier of Electrical and Electronic Components

*Click to view similar products for [Pushbutton Switches](#) category:*

*Click to view products by [Knitter-Switch](#) manufacturer:*

Other Similar products are found below :

[LW1L-M1C10V-A](#) [LW2L-A1C20M-GD](#) [LW2L-M1C20M-A](#) [60324L](#) [M7E-HRN2](#) [67021K512](#) [67081K512X](#) [701PB580](#) [719-5504-000](#)  
[MDPSSGLFS](#) [810KSV30B](#) [FLT 2U EE 01A](#) [MML21KA3ABK](#) [MML23KA3AC05K-001](#) [MML23KW3AA01W](#) [8418K2](#) [8646AB6X718UL](#)  
[8646ABUL](#) [FSDWH](#) [9001KXRK](#) [9001T8BK](#) [9533CD4+U574+U4922](#) [1203MRA](#) [A22EM01S](#) [A595](#) [1202A6](#) [12037A2ULCSA](#) [1203A2UL](#)  
[ABD122N-B](#) [1211390004](#) [ABN111-Y](#) [ABN400-R](#) [1211500044](#) [1211580012](#) [1212MRA](#) [1232A6NF](#) [RA3CSH6A](#) [1241.1183.7047](#)  
[1241.2511](#) [1241.3428](#) [1223A2ULCSA](#) [1223MRA](#) [1232AX2119](#) [1241.1183.8000](#) [1241.1183.8029](#) [1241.2506](#) [1241.2606](#) [12MA6](#)  
[1301940184](#) [RELBARF6X10\(PLASTIC\)](#)