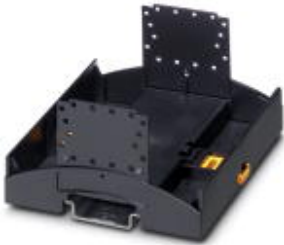


## Electronic housing - BC 107,6 UT HBUS BK - 2896270

Please be informed that the data shown in this PDF Document is generated from our Online Catalog. Please find the complete data in the user's documentation. Our General Terms of Use for Downloads are valid (<http://phoenixcontact.com/download>)




Installation component housing with vents, Lower part, Cross connection: DIN rail bus connector, Color: black, Width: 107.6 mm, Constructional height: 49 mm, Number of positions cross connector: 16

### Why buy this product

- Item is from the BC product range
- Conforms to DIN EN 43880
- Tool-free mounting
- Available in overall widths from one to nine width units (17.8 mm ... 161.6 mm)
- Inflammability class V0 according to UL 94
- Variety of connection technologies
- Can be mounted on the DIN rail or the wall
- Optional with bus connector for DIN rail mounting



### Key Commercial Data

Packing unit	10 pc
Minimum order quantity	10 pc
GTIN	 4 046356 096720
Weight per Piece (excluding packing)	46.4 g
Custom tariff number	85472000
Country of origin	Germany
Product key	ACHBAA

### Technical data

#### General

Housing type	Installation component housing
Housing material	Polycarbonate
Color	black

#### Ambient conditions

Ambient temperature (operation)	-40 °C ... 105 °C (depending on power dissipation)
---------------------------------	--

# Electronic housing - BC 107,6 UT HBUS BK - 2896270

## Technical data

### Dimensions

Length	89.7 mm
Constructional height	49 mm
Width	107.6 mm

### Technical data

Flammability rating according to UL 94	V0
Power dissipation without gap	13.08 W

### Standards and Regulations

Flammability rating according to UL 94	V0
--	----

## Classifications

### eCl@ss

eCl@ss 4.0	27180401
eCl@ss 4.1	27180401
eCl@ss 5.0	27180506
eCl@ss 5.1	27180506
eCl@ss 6.0	27180802
eCl@ss 7.0	27182702
eCl@ss 8.0	27182702

### ETIM

ETIM 2.0	EC001031
ETIM 3.0	EC001031
ETIM 4.0	EC000886
ETIM 5.0	EC001031

### UNSPSC

UNSPSC 6.01	31261501
UNSPSC 7.0901	31261501
UNSPSC 11	31261501
UNSPSC 12.01	31261501
UNSPSC 13.2	31261501

## Approvals

### Approvals

---

#### Approvals

UL Recognized / EAC

---

## Electronic housing - BC 107,6 UT HBUS BK - 2896270

### Approvals


Ex Approvals

---

Approvals submitted

---

### Approval details

UL Recognized 

EAC

### Accessories

Accessories

Fiber optics

Component housing - HS LC-V-D3/ R2XC1-5,08 - 2202311



Fiber optics Can be used for the BC housing range (housing must be processed), Color: transparent

---

Component housing - HS LC-V-D3/ R3XC1-5,08 - 2202312



Fiber optics Can be used for the BC housing range (housing must be processed), Color: transparent

---

### Necessary add-on products

Components of electronic housing - BC 107,6 OT U11 KMGY - 2896076



Installation component housing, Upper part, Cross connection: Component housing, Color: light gray, Width: 107.6 mm, Constructional height: 62.2 mm

---

## Electronic housing - BC 107,6 UT HBUS BK - 2896270

### Accessories

Upper part of housing - BC 107,6 OT U22 KMGY - 2896089



Installation component housing, Upper part, Color: light gray, Width: 107.6 mm, Constructional height: 62.2 mm

---

### Additional products

DIN rail bus connectors - HBUS 107,6-16P-1S BK - 2896306



Plug component, Nominal current: 3 A, Number of positions: 16, Pitch: 2.54 mm, Color: jet black

## X-ON Electronics

Largest Supplier of Electrical and Electronic Components

*Click to view similar products for [Heavy Duty Power Connectors](#) category:*

*Click to view products by [Phoenix Contact](#) manufacturer:*

Other Similar products are found below :

[1424439](#) [1424438](#) [09330062652](#) [2-8675P1](#) [605601-1](#) [6340G1](#) [6341G1](#) [6360G1](#) [6373G1](#) [6374g2](#) [6396G1](#) [647757-1](#) [66394-4](#) [6643411-1](#)  
[6646058-2](#) [6646137-1](#) [6646138-1](#) [6646348-1](#) [6646479-1](#) [6646608-1](#) [6646786-1](#) [6646940-1](#) [6651091-1](#) [6651525-1](#) [6651529-1](#) [6651778-1](#)  
[6651788-1](#) [696465-1](#) [696475-1](#) [73000005059](#) [73000005349](#) [73000005642](#) [73080255059](#) [73080965046](#) [765-15-0080A](#) [765-16-0080B](#)  
[789.700-44](#) [789.700-54](#) [80-1010](#) [80-9](#) [827381-1](#) [829992-1](#) [902-77-02113](#) [PL00U-301-10D10](#) [PM103MOOLOO](#) [PM16S1620S32-50](#)  
[PM212MOOLOO](#) [PM309FOOLOO](#) [PM324FOOLCH](#) [PMHPAF11S03](#)