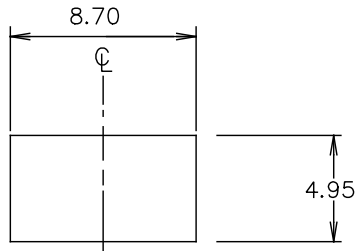
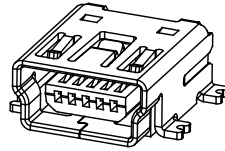


REVISION Z

DO NOT SCALE FROM THIS PRINT

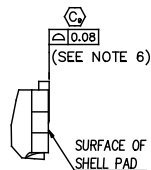
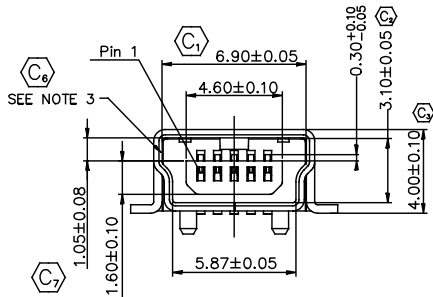
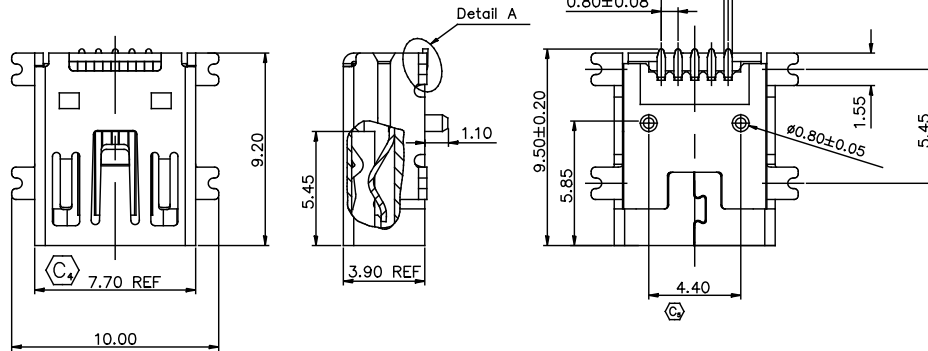


SUGGESTED PANEL CUTOUT DIMENSIONS

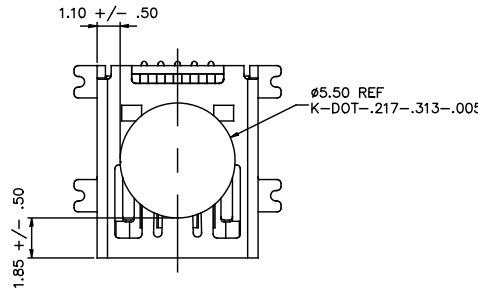


MUSB-05-X-B-SM-A-X-XX

- NO. OF CONTACTS _____
- 05 _____
- PLATING _____
 - F: 1 μ" FLASH GOLD ON CONTACT AREA, BRIGHT ACID TIN ON TAIL
 - S: 30 μ" SELECTIVE GOLD ON CONTACT AREA, BRIGHT ACID TIN ON TAIL
- OPTION _____
 - TR: TAPE & REEL PACKAGING (LEAVE BLANK FOR TRAY PACKAGING)
 - K: KAPTON PAD
 - E & I OPTION _____
 - R: RoHS COMPLIANT
- ALIGNMENT PINS _____
- RA TERMINATION _____
- SM: SURFACE MOUNT
- TYPE _____
- B _____



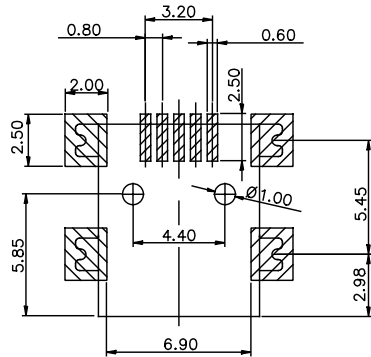
DETAIL A
SCALE 2:1



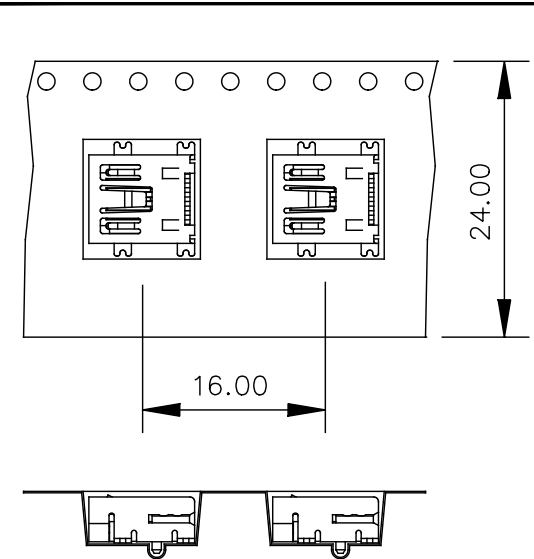
PAD PLACEMENT

NOTES:

1. C REPRESENTS CRITICAL DIMENSION.
2. NOTE DELETED.
3. CONFIRM THAT PARTS FACE MATCH THIS PRINT.
4. ALL PARTS RoHS COMPLIANT AS OF REVISION M.
5. PARTS TO BE PACKAGED LEADS DOWN IN TRAYS.
6. COPLANARITY MEASUREMENT SHOULD INCLUDED ALL USB TAILS AND SHELL TABS.



RECOMMENDED PCB LAYOUT



USER DIRECTION OF UNREELING →
POCKET NOT DETAILED

-TR: TAPE & REEL OPTION

UNLESS OTHERWISE SPECIFIED, DIMENSIONS ARE IN MILLIMETERS TOLERANCES ARE:
DECIMALS .X: ±.25 .XX: ±.13 .XXX: ±.05
ANGLES 3°

PROPRIETARY NOTE
THIS DOCUMENT CONTAINS CONFIDENTIAL AND PROPRIETARY INFORMATION AND ALL DESIGN, MANUFACTURING, REPRODUCTION, USE, PATENT RIGHTS AND SALES RIGHTS ARE EXPRESSLY RESERVED BY SAMTEC, INC. THIS DOCUMENT SHALL NOT BE DISCLOSED, IN WHOLE OR PART, TO ANY UNAUTHORIZED PERSON OR ENTITY NOR REPRODUCED, TRANSFERRED OR INCORPORATED IN ANY OTHER PROJECT IN ANY MANNER WITHOUT THE EXPRESS WRITTEN CONSENT OF SAMTEC, INC.

DO NOT SCALE DRAWING
INSULATOR: LCP, RATED UL 94V-0, BLACK
CONTACT: COPPER ALLOY
SHELL: COPPER ALLOY

SHEET SCALE: 1:2

MAX FLASH ALLOWED: .051
MAX GATE VESTIGE: .051
F:\DWG\EXISPROD\ASSEMBLY\NO\USB

samtec		CODE: 55322
520 PARK EAST BLVD. NEW ALBANY, IN 47150 (812) 944-6733 P.O. BOX 1147 TWX: 810-540-4085		
DESCRIPTION: Mini USB, RA, 5 Pin, Type B, Single, SMT		
DWG. NO. MUSB-05-X-B-SM-A-X-XX		
BY: J. WOOL 12/26/03		SHEET 1 OF 1

X-ON Electronics

Largest Supplier of Electrical and Electronic Components

Click to view similar products for [USB Connectors](#) category:

Click to view products by [Samtec](#) manufacturer:

Other Similar products are found below :

[10033527-N3112MLF](#) [17-210561](#) [GMCB05B11124H1EU](#) [17-200931](#) [65-647-8-BK-BU](#) [690-010-295-484](#) [73725-1191BLF](#) [950](#) [E8144-B01021-L](#) [A-USB A-LP-SMT-C](#) [A-USB B-TOP-C](#) [MUSBA511N5](#) [MUSBB15131](#) [MUSBC111M5](#) [MUSBD11135](#) [217450-1](#) [CA 6 W LD](#) [896-30-004-00-000000](#) [KUSBVX-BS1N-W30](#) [KUSBX-AP-KIT-SCBLK](#) [KUSBX-AS2N-W](#) [KUSBX-SMT2AP1S-W](#) [KUSBX-SMTBS1NBTR](#) [30-498-6](#) [SK-60A-2](#) [17-200261](#) [17-210051](#) [1734082-1](#) [FK-37-32SL](#) [30-1574](#) [30-470](#) [30-489](#) [30-572-3](#) [30-9503](#) [M9177/2-1](#) [MAB 5 S](#) [MIKROE-1451](#) [33UBBR-04SW11R](#) [USBFTV2PEM2G](#) [USBFTVC6ZN](#) [USBFTVSCCG](#) [KUSBX-AS2N-W30](#) [KUSBX-SLAS1N-W](#) [KUSBX-SLAS1N-W30](#) [1-1734084-2](#) [E8110-001-01](#) [MUSBC11135](#) [33UBAR-04SW11](#) [USBF21ZNSCC](#) [USBBFTV6ZC](#)