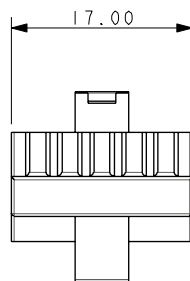
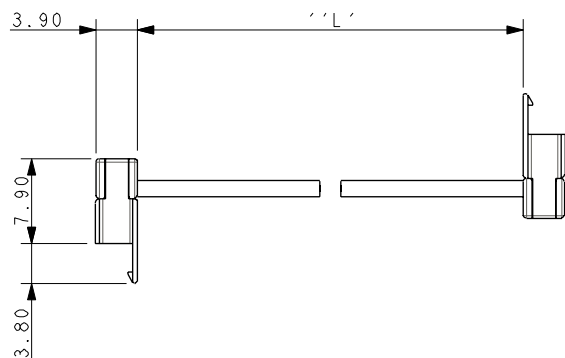
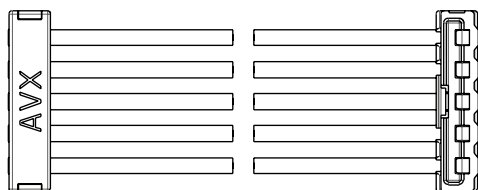


A

B

C

D



PART NUMBER	LENGTH 'L'	WIRE COLOUR
58-9159-005-001-045	63.5±5.0	RED
58-9159-005-002-045	127.0±5.0	GREEN
58-9159-005-003-045	215.9±10.0	BLUE
58-9159-005-004-045	292.1±10.0	YELLOW
58-9159-005-005-045	50.8±5.0	ORANGE
58-9159-005-006-045	114.3±5.0	WHITE
58-9159-005-007-045	203.2±10.0	BLACK
58-9159-005-008-045	355.6±10.0	BROWN
58-9159-005-009-045	457.2±15.0	PURPLE

NOTES :-

- 9159 IDC SOCKET (DOWN) TO 9159 IDC SOCKET (UP), LATCH AND WIRE ON THE SAME SIDE.
- CONNECTOR COLOUR WHITE, WIRE STOP CAP USED.
- 5 WIRES 22AWG, ULI429, 19X32AWG CONDUCTOR, COLOUR AS IN TABLE.
- CABLE ASSEMBLY LENGTH AS IN TABLE.
- CABLE ASSEMBLIES SUPPLIED IN BAGS OF 100.
- GENERAL TOLERANCE ± 0.20 UNLESS SPECIFIED IN TABLE.



A

B

C

D

FORM-106-01-056-2S ISS-8

Release No.
History
103023
22.08.2013
28.08.2013
24.10.2013



3rd ANGLE
ALL DIMENSIONS
IN MILLIMETRES



Drawn
N.C.H.
Size
BV

Part Number REFER TO TABLE		DATE 22-Aug-13
Description 9159 CABLE ASSEMBLY - 5 WAY		Issue C
Drawing Number 58-9159-005-0XX-045S		

X-ON Electronics

Largest Supplier of Electrical and Electronic Components

Click to view similar products for [Board to Board & Mezzanine Connectors](#) category:

Click to view products by [AVX](#) manufacturer:

Other Similar products are found below :

[10135583-642402LF](#) [89885-310LF](#) [589158040000018](#) [6-1393048-0](#) [68683-613](#) [MDF7-12DP-2.54DSA](#) [MDF7-18P-2.54DSA\(01\)](#) [MDF7-20DP-2.54DSA](#) [MDF7-26D-2.54DSA\(55\)](#) [MDF7-3P-2.54DSA\(01\)](#) [MDF7B-3P-2.54DSA\(55\)](#) [MDF7C-11P-2.54DSA\(55\)](#) [MDF7C-18P-2.54DSA\(55\)](#) [MDF7C-5P-2.54DSA\(01\)](#) [MDF7P-5P-2.54DSA\(55\)](#) [75234-0516](#) [FCN-230C068-11](#) [FCN-268F012-G/BD](#) [FCN-268F036-G/BD](#) [FCN-268M012-G/0D](#) [FCN-268M024-G/1D](#) [FCN-360C008-C](#) [FCN-360C040-C](#) [FCN-723J004/1](#) [MIS-048-01-F-D-DP-K](#) [832-10-034-10-001000](#) [93696-325LF](#) [11828-1FA](#) [AXK630345P](#) [18097-0013](#) [ICA-328STT](#) [2007042-2](#) [304400-2](#) [FCN-214Q030-G/0](#) [FCN-215Q040-G/0](#) [FCN-230C068-ESA](#) [FCN-234P048-G/0](#) [FCN-235D050-G/C](#) [FCN-360A3](#) [FCN-360C040-B](#) [210-93-314-41-105000](#) [2-22603-0](#) [379-064-521-202](#) [MDF7-12P-2.54DSA\(01\)](#) [MDF7-16P-2.54DS\(56\)](#) [MDF7-40DP-2.54DSA\(55\)](#) [MDF7-8P-2.54DSA\(55\)](#) [MDF7B-16P-2.54DSA\(55\)](#) [AXG720047](#) [5031084030](#)