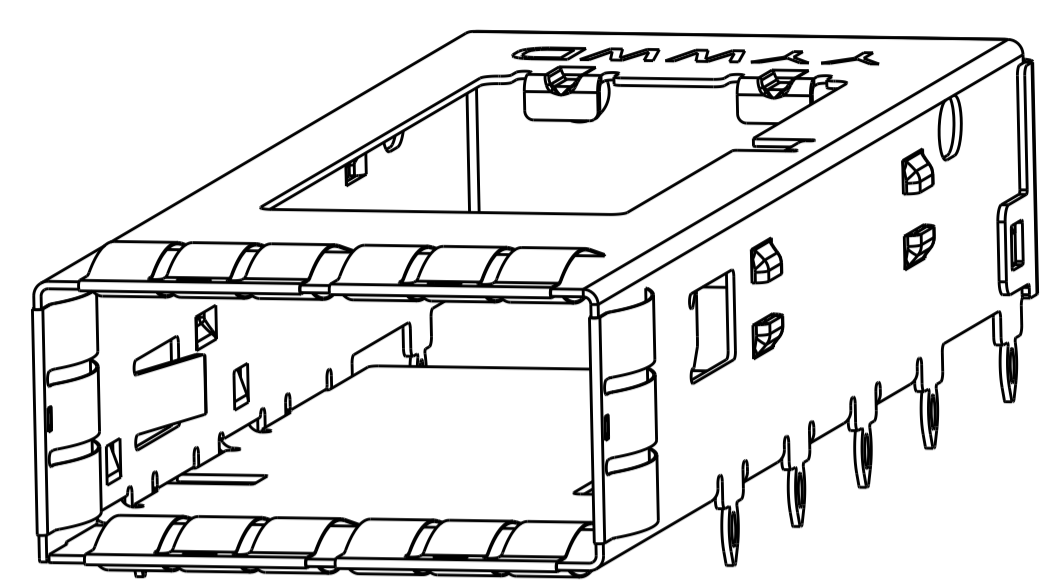
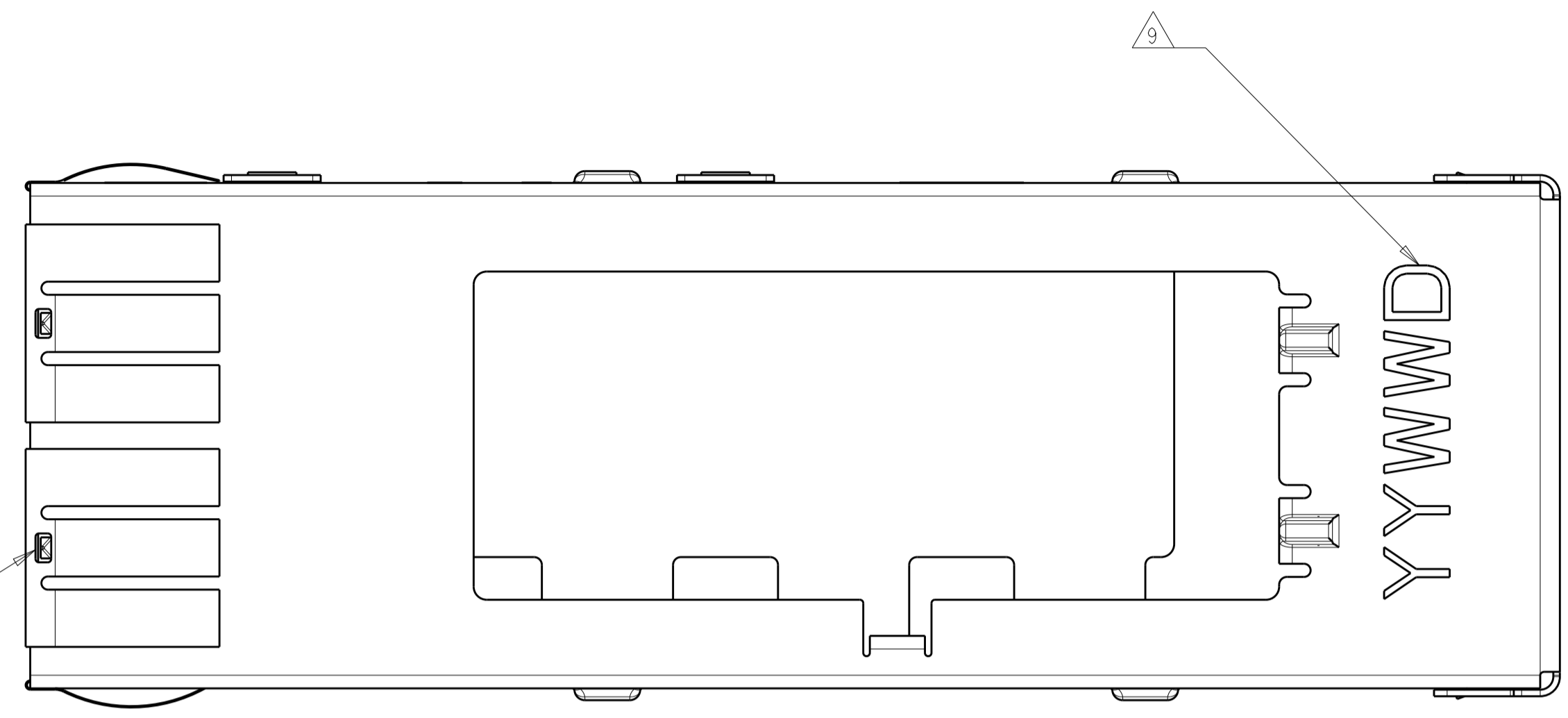


LOC	DIST	REVISIONS			
GP	00	REV	DATE	BY	CHK
		A	FIRST ACTIVE	19MAR2014	HW MC

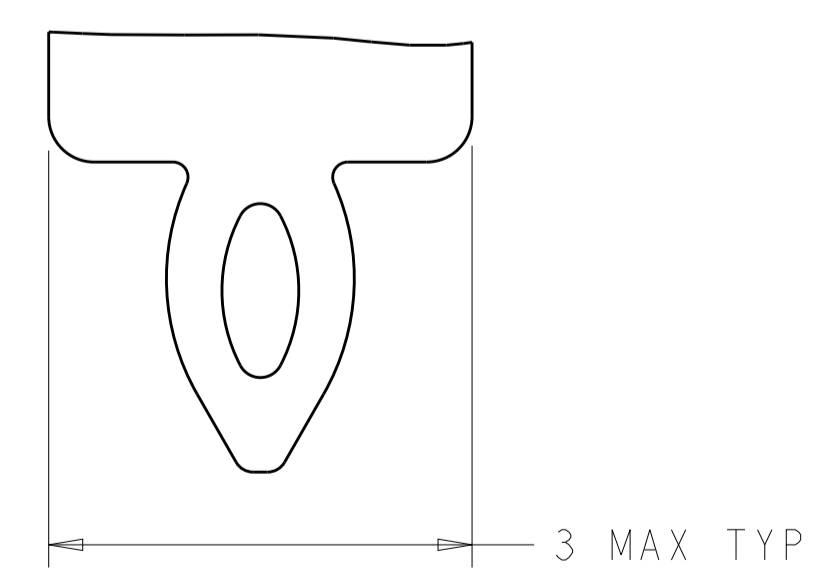
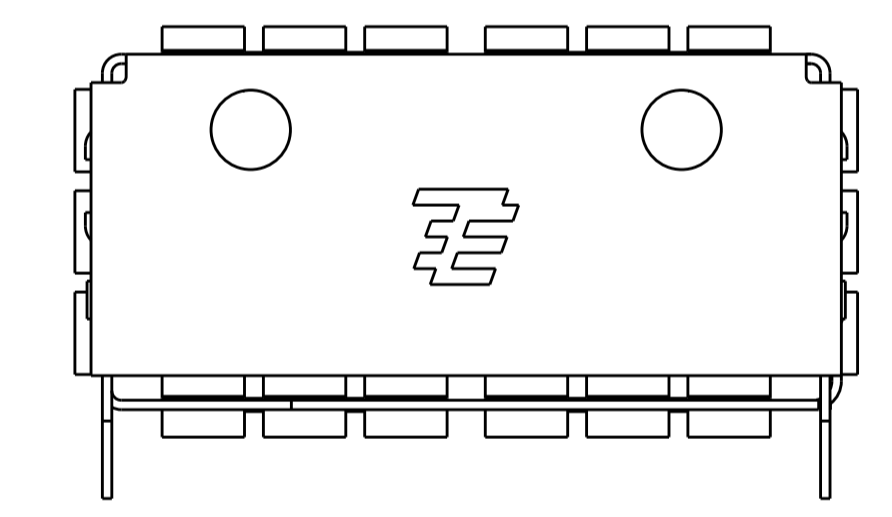
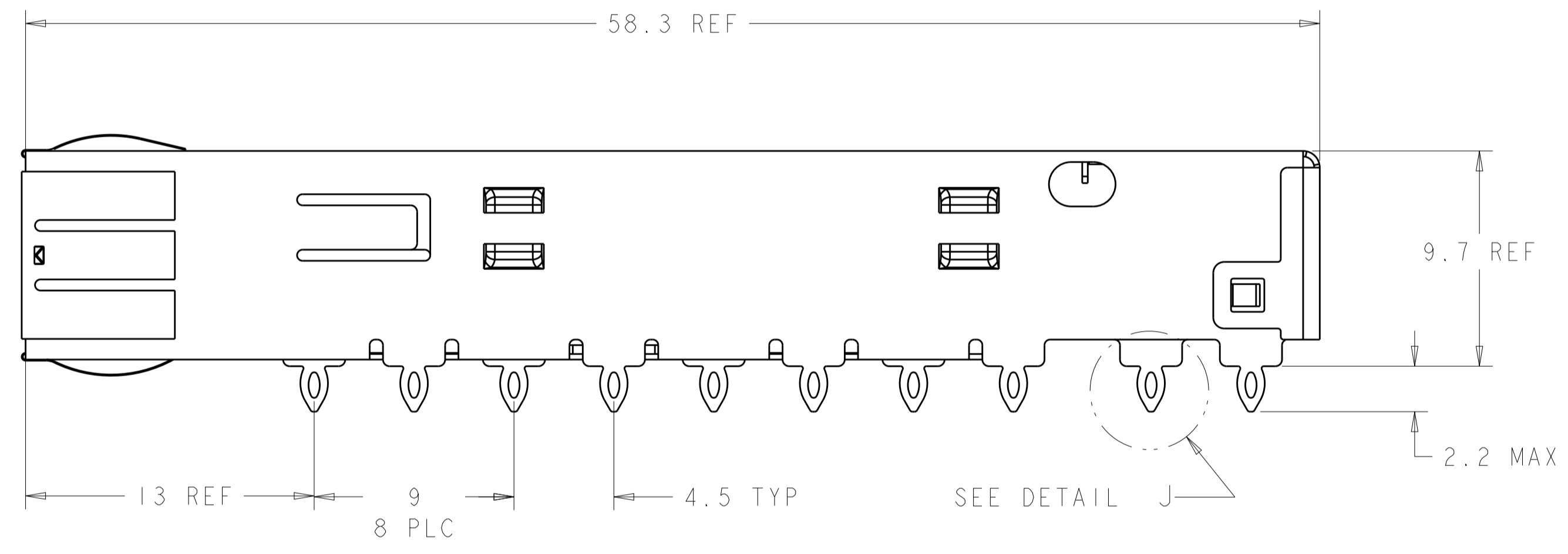
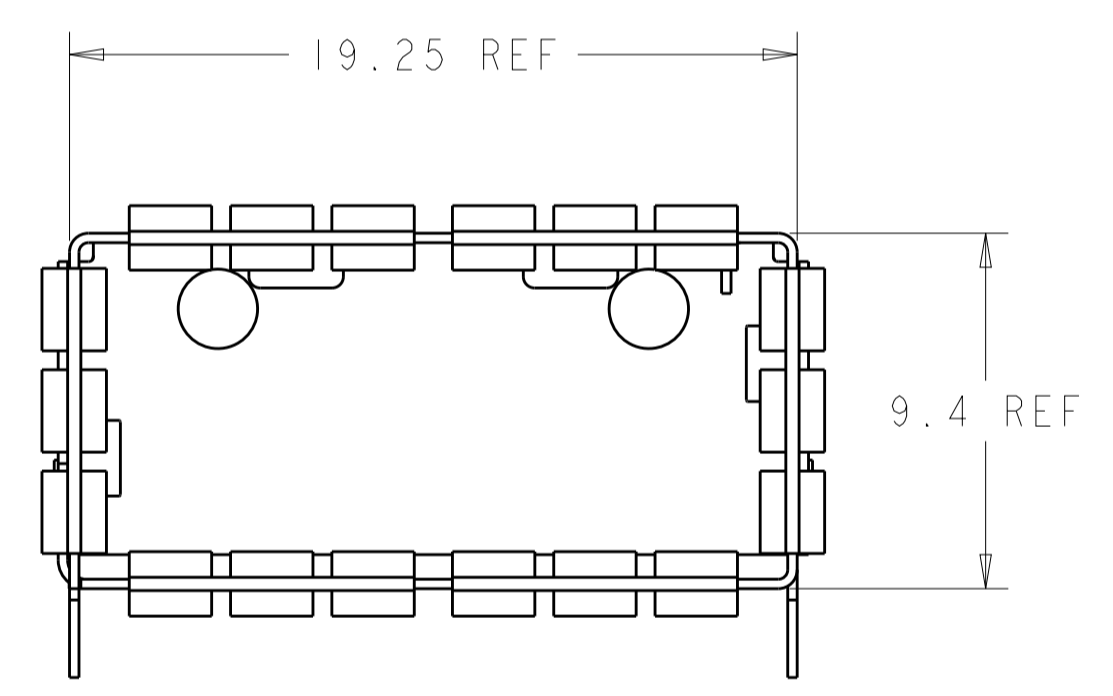


ISOMETRIC VIEW
SCALE 4:1

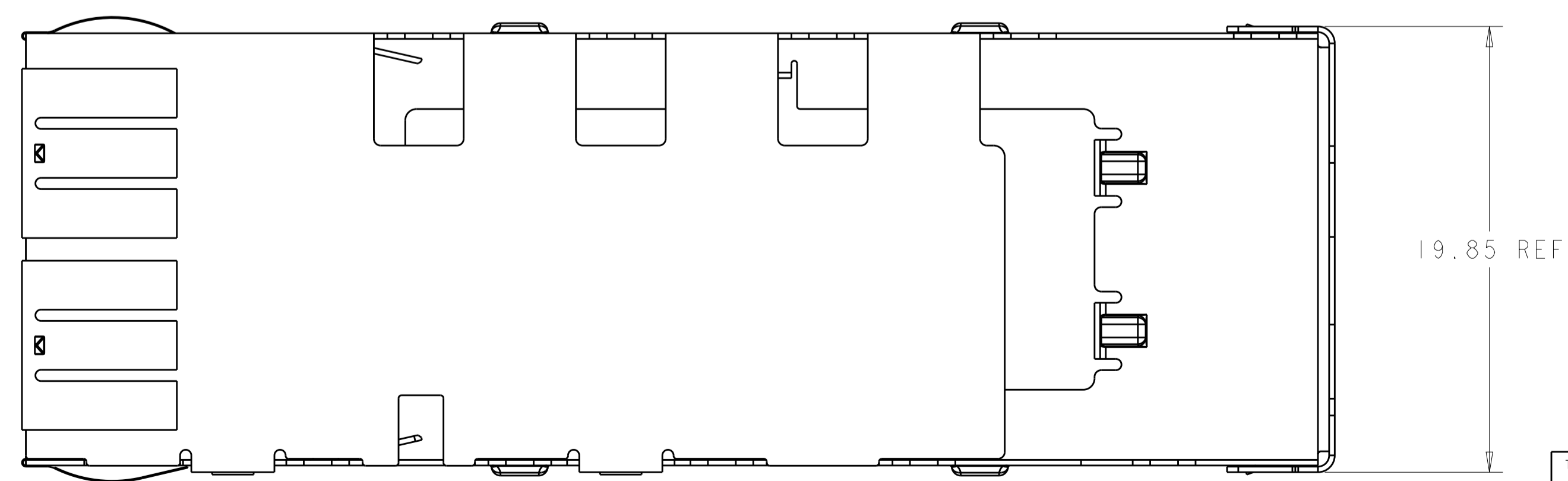
Sn42Bi58 SOLDER
6 PLACES



- ⚠ CAGE MATERIAL: 0.25 THICK NICKEL SILVER.
SPRING MATERIAL: COPPER ALLOY
- ⚠ MINIMUM PITCH DIMENSION.
- 3. MATES WITH QSFP MSA COMPATIBLE TRANSCEIVER.
- ⚠ REFERENCE APPLICATION SPEC 114-13217 FOR RECOMMENDED DRILL HOLE DIAMETER AND PLATING THICKNESS.
- ⚠ DATUM AND BASIC DIMENSIONS ESTABLISHED BY CUSTOMERS.
- 6. MINIMUM PC BOARD THICKNESS:
SINGLES SIDED: 1.45
DOUBLE SIDED: 2.2.
- ⚠ DATUM -A- IS TOP SURFACE OF THE HOST BOARD.
- ⚠ SURFACE TRACES PERMITTED WITHIN THIS AREA EXCEPT WHERE CAGE STANDOFFS, SHOWN IN DETAIL J, CONTACT PC BOARD.
- ⚠ DATE CODE (YYWWD) MARKED APPROXIMATELY AS SHOWN.
- ⚠ SPRING FINISH: 0.8μm MIN TIN OVER 0.8μm MIN NICKEL, NON-PLATED EDGES PERMISSIBLE.
- 11. PRODUCT HAS NOT COMPLETED QUALIFICATION TESTING.



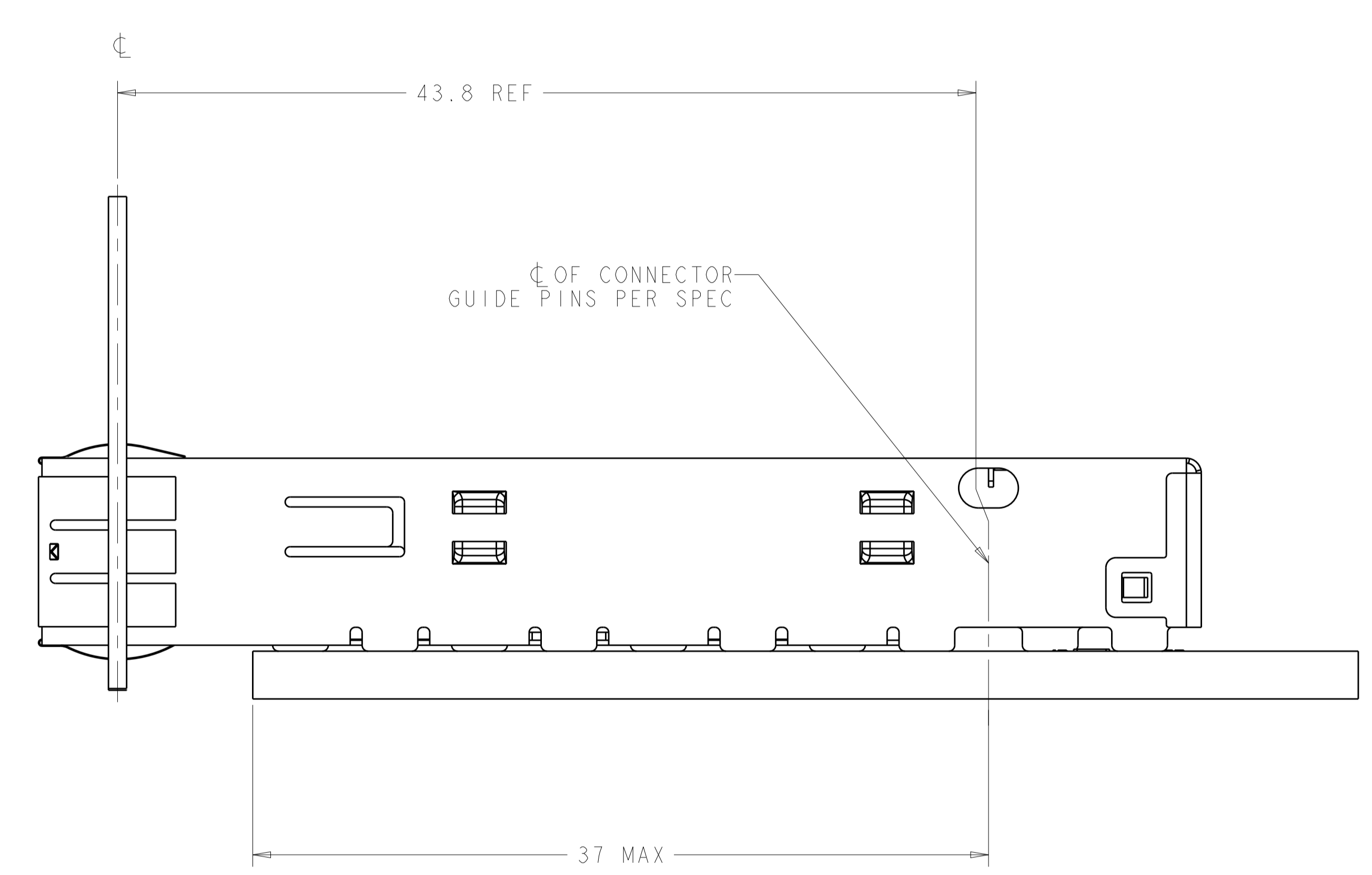
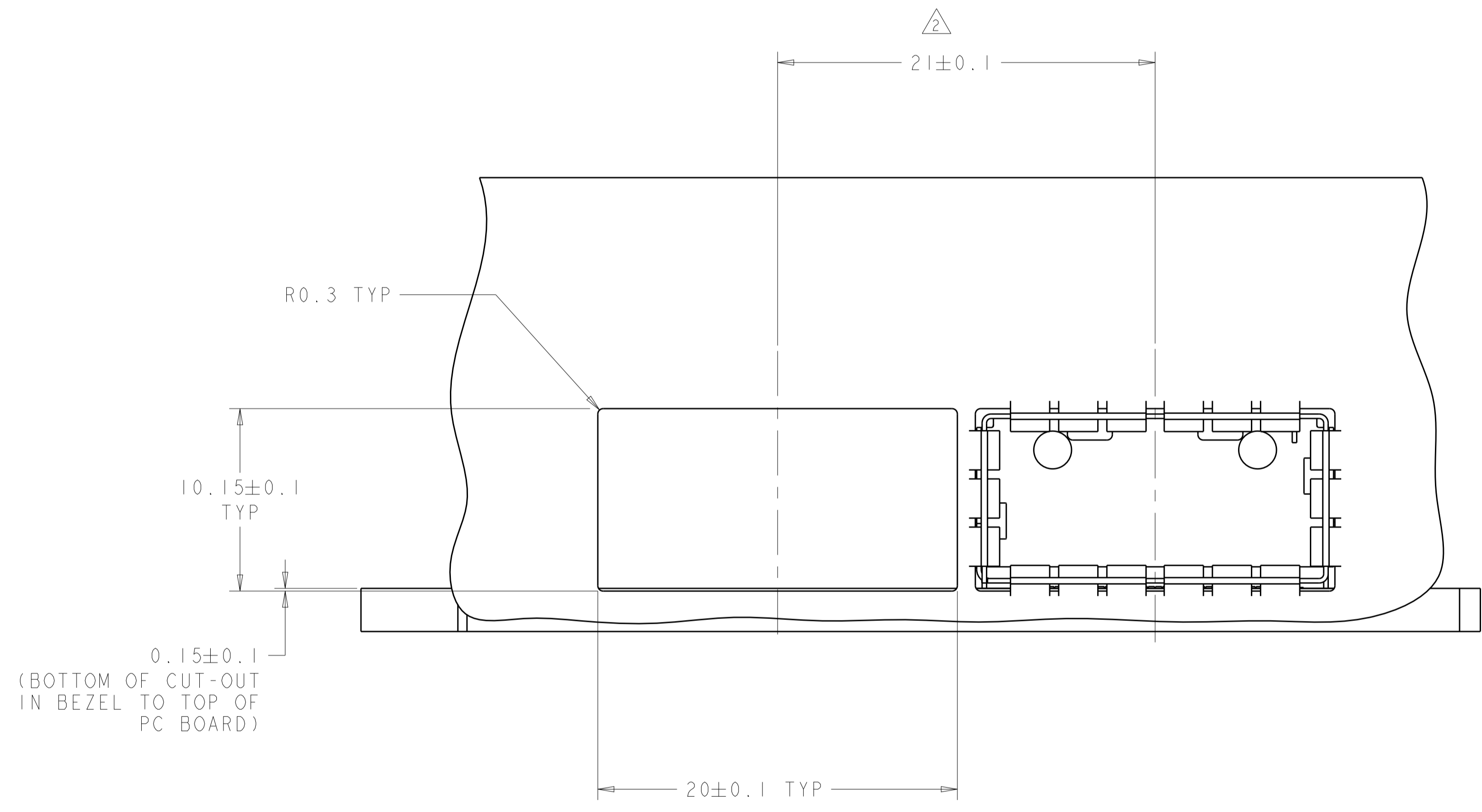
DETAIL J
SCALE 20:1



2170519-1
PART NUMBER

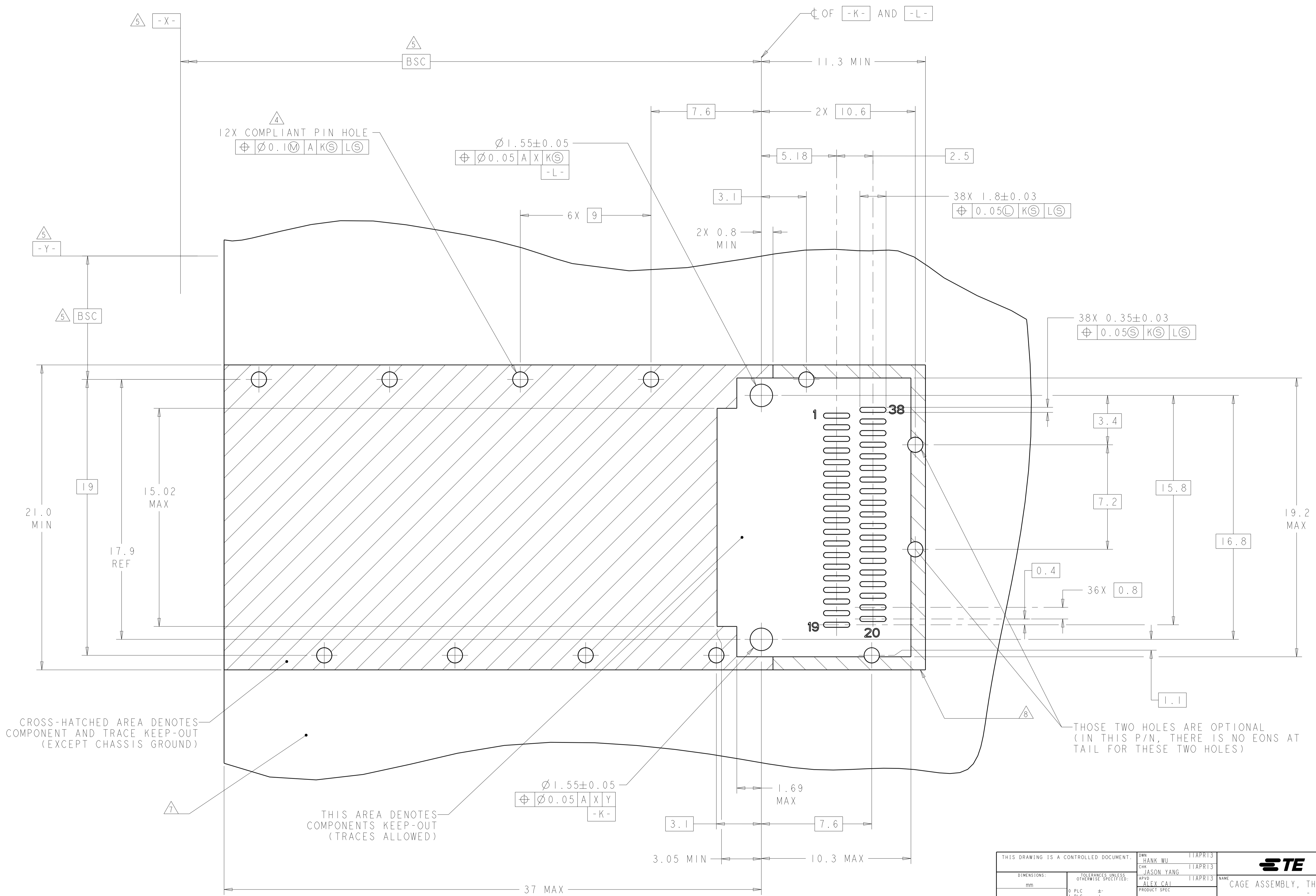
THIS DRAWING IS A CONTROLLED DOCUMENT.		DWN: HANK WU 11APR13	TE Connectivity
DIMENSIONS: mm		CHK: JASON YANG 11APR13	
TOLERANCES UNLESS OTHERWISE SPECIFIED:		APVD: AILEY CAI 11APR13	NAME: CAGE ASSEMBLY, THRU BEZEL, QSFP
0 PLC ±	1 PLC ±0.20	PRODUCT SPEC	SIZE: CAGE CODE DRAWING NO
2 PLC ±	3 PLC ±	108-2286	RESTRICTED TO
4 PLC ±	ANGLES ±	APPLICATION SPEC	A100779C=2170519
MATERIAL	FINISH	114-13217	WEIGHT
⚠	⚠	Customer Drawing	SCALE 5:1 SHEET 1 OF 3 REV A

LOC	DIST	REVISIONS					
GP	00	P	LTN	DESCRIPTION	DATE	DWN	APVD
-	-	-	-	SEE SHEET 1	-	-	-



THIS DRAWING IS A CONTROLLED DOCUMENT.		DWN: HANK WU 11APR13	TE Connectivity
DIMENSIONS: mm		CHK: JASON YANG 11APR13	
TOLERANCES UNLESS OTHERWISE SPECIFIED:		APVD: AILEY CAI 11APR13	NAME: CAGE ASSEMBLY, THRU BEZEL, QSFP
0 PLC ±	1 PLC ±	PRODUCT SPEC	SIZE: A
2 PLC ±0.20	3 PLC ±	108-2286	CAGE CODE: 100779
4 PLC ±	ANGLES ±	APPLICATION SPEC	DRAWING NO: C=2170519
MATERIAL:	FINISH:	114-13217	RESTRICTED TO:
Customer Drawing		WEIGHT:	SCALE: 5:1
			SHEET 2 OF 3
			REV A

LOC	DIST	REVISIONS				
		P	LTH	DATE	DWN	APVD
GP	00	-	SEE SHEET 1	-	-	-



CROSS-HATCHED AREA DENOTES COMPONENT AND TRACE KEEP-OUT (EXCEPT CHASSIS GROUND)

THIS AREA DENOTES COMPONENTS KEEP-OUT (TRACES ALLOWED)

THOSE TWO HOLES ARE OPTIONAL (IN THIS P/N, THERE IS NO EONS AT TAIL FOR THESE TWO HOLES)

RECOMMENDED PC BOARD LAYOUT
 SCALE 8:1

DIMENSIONS:		TOLERANCES UNLESS OTHERWISE SPECIFIED:		MATERIAL		FINISH	
mm	0 PLC	±					
	1 PLC	±	0.20				
	2 PLC	±					
	3 PLC	±					
	4 PLC	±					
	ANGLES	±					

THIS DRAWING IS A CONTROLLED DOCUMENT.	DWN: HANK WU CHK: JASON YANG APVD: AILEY CAI	DATE: 11APR13 DATE: 11APR13 DATE: 11APR13	TE Connectivity
NAME: CAGE ASSEMBLY, THRU BEZEL, QSFP	PRODUCT SPEC: 108-2286	APPLICATION SPEC: 114-13217	
SIZE: A	CAGE CODE: 100779	DRAWING NO: 2170519	RESTRICTED TO:
MATERIAL:	Customer Drawing	SCALE: 5:1	SHEET: 3 OF 3

X-ON Electronics

Largest Supplier of Electrical and Electronic Components

Click to view similar products for [Terminal Block Tools & Accessories](#) category:

Click to view products by [TE Connectivity](#) manufacturer:

Other Similar products are found below :

[1029563](#) [00171430102](#) [00171420102](#) [014415](#) [CSTSPC1-2](#) [9-1437653-4](#) [928358-1](#) [QC209/J](#) [HCL10-6](#) [1437403-6](#) [1437403-9](#) [1437403-8](#)
[147832-1](#) [EC0037-000](#) [MT2/H--](#) [MT2/H-32](#) [MT6/H-N](#) [MT6/V-GRND](#) [MT8/H-101-110](#) [BB2-09BF](#) [EP2.5/4UN/BG](#) [1707755](#) [1735590](#)
[1755480](#) [1760336](#) [BO3-02](#) [1789281](#) [1840227](#) [1840230](#) [1893164](#) [2-1437402-1](#) [2-1437644-9](#) [JB2-09/J](#) [2202307](#) [2204082](#) [2302463](#) [2305949](#)
[2310581](#) [8TK2-24](#) [91.201.1](#) [L2U2](#) [2778.0](#) [2890137](#) [2901107](#) [2901123](#) [2901699](#) [2MP/J](#) [2MV-06](#) [1705126](#) [1756294](#)