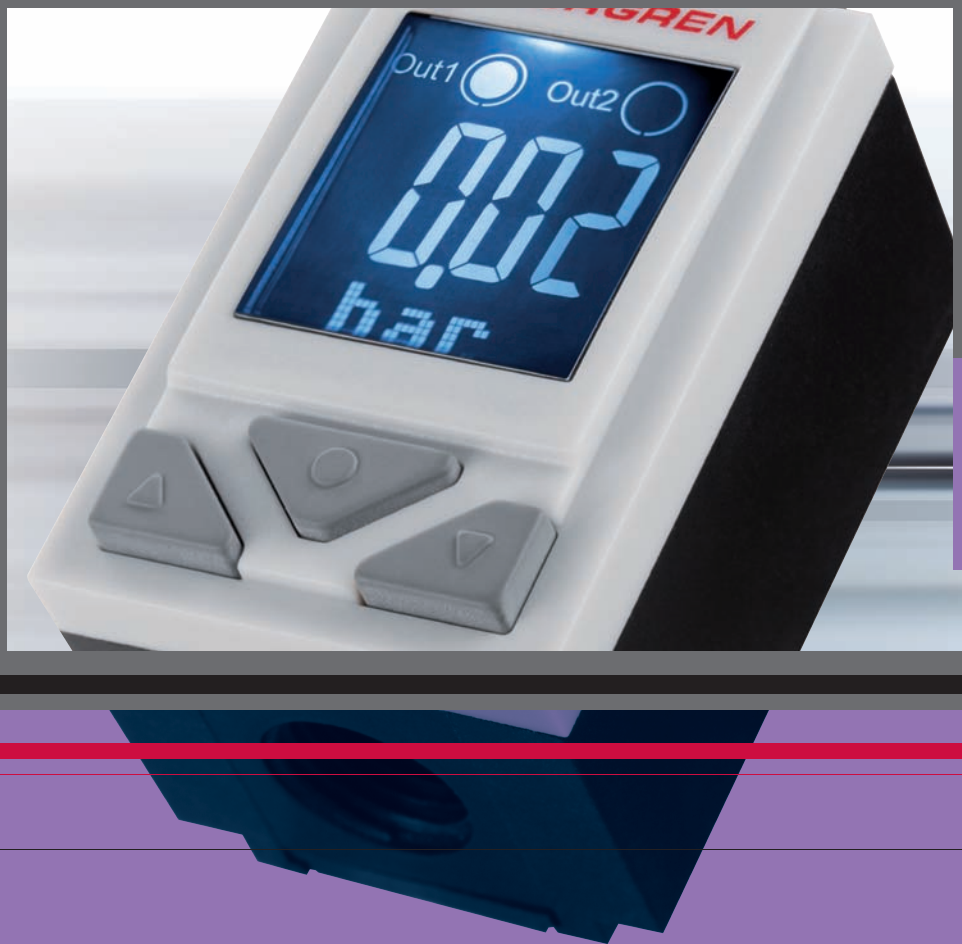


Pressure switches

A comprehensive range of Pressure Switches, providing a range of different options for converting pressure changes into an electrical signal. The range includes electro-mechanical and electronic switches suitable for pneumatic and hydraulic applications. Also showcased is our newest Pressure Switch 50D (page 168) as well as the classic Herion 8D product (page 170). Catalogue pages show comprehensive data with pdf datasheets available online, see the reference at the bottom of each page.



Fast Find Guide

ELECTRO-MECHANICAL PRESSURE SWITCHES

18D Pneumatic

-1 to 30 bar



Page 165

18D Hydraulic

5 to 420 bar



Page 166

20D

Low pressure, Allfluid and ATEX
-0.025 to 100 bar



Page 167

ELECTRONIC PRESSURE SWITCHES

50D Pneumatic

0 to 10 bar, 0 to 6 bar,
-1 to 0 bar, -1 to 1 bar



Page 168

33D Pneumatic/Allfluid

-1 to 400 bar



Page 169

CLASSIC PRODUCTS

8D Pneumatic & Hydraulic

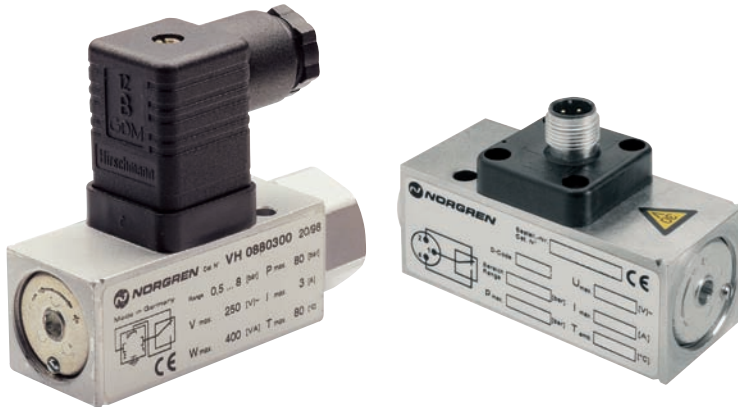


Page 170

ELECTRO-MECHANICAL PRESSURE SWITCH

18D Pneumatic

-1 to 30 bar



- Gold-plated contacts
- High cycle life
- Vibration resistant to 15 g
- Microswitch approved by UL and CSA
- Intrinsically safe operation
- Direct interface to Excelon air line units

TECHNICAL DATA

Medium:

Neutral, gaseous and liquid fluids

Operation:

Diaphragm

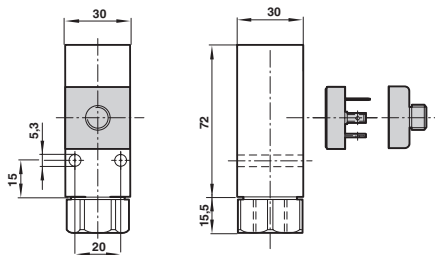
Ambient temperature:

-10°C to +80°C

Consult our Technical Service for use below +2°C.

Repeatability:

±3%, of full scale



Models

STANDARD Model No.	Pressure range (bar)	Fluid connection	Electrical connection	Switching pressure difference	Max over pressure (bar)	Plug	Electrical connector M12 x 1 Straight x 2 m long 90° x 2 m long
--------------------	----------------------	------------------	-----------------------	-------------------------------	-------------------------	------	---



0880100000000000	-1 to 0	G1/4	DIN EN 175301-803 Form A	0.15 to 0.18	80	-	-
0880110000000000	-1 to 1	G1/4	DIN EN 175301-803 Form A	0.25 to 0.35	80	-	-
0880200000000000	0.2 to 2	G1/4	DIN EN 175301-803 Form A	0.20 to 0.35	80	-	-
0880300000000000	0.5 to 8	G1/4	DIN EN 175301-803 Form A	0.35 to 0.85	80	-	-
0880400000000000	1 to 16	G1/4	DIN EN 175301-803 Form A	0.40 to 1.20	80	-	-
0880600000000000	1 to 30	G1/4	DIN EN 175301-803 Form A	1.00 to 5.00	80	-	-
0880620000000000	1 to 30	1/4 NPT	DIN EN 175301-803 Form A	1.00 to 5.00	80	-	-
0880226000000000*	0.2 to 4	G1/4	DIN EN 175301-803 Form A	0.20 to 0.35	80	0570110000000000	-
0880326000000000*	0.5 to 8	G1/4	DIN EN 175301-803 Form A	0.35 to 0.85	80	0570110000000000	-
0880426000000000*	1 to 16	G1/4	DIN EN 175301-803 Form A	0.40 to 1.20	80	0570110000000000	-
0881100000000000	-1 to 0	Flange	DIN EN 175301-803 Form A	0.15 to 0.18	80	-	-
0881200000000000	0.2 to 2	Flange	DIN EN 175301-803 Form A	0.20 to 0.35	80	-	-
0881300000000000	0.5 to 8	Flange	DIN EN 175301-803 Form A	0.35 to 0.85	80	-	-
0881400000000000	1 to 16	Flange	DIN EN 175301-803 Form A	0.40 to 1.20	80	-	-
0880160000000000*	-1 to 0	G1/4	M12 x 1	0.15 to 0.18	80	-	0523057000000000 0523058000000000
0880260000000000*	0.2 to 2	G1/4	M12 x 1	0.20 to 0.35	80	-	0523057000000000 0523058000000000
0880360000000000*	0.5 to 8	G1/4	M12 x 1	0.35 to 0.85	80	-	0523057000000000 0523058000000000
0880460000000000*	1 to 16	G1/4	M12 x 1	0.40 to 1.20	80	-	0523057000000000 0523058000000000

MODELS FOR WATER APPLICATIONS

0880323000000000	0.5 to 8	G1/4	DIN EN 175301-803 Form A	0.35 to 0.85	80	-	-
------------------	----------	------	--------------------------	--------------	----	---	---

MODELS CONFORMING TO ATEX - ZONE 2 AND 22 (Ex II 3G/D)

0880280000000000	0.2 to 2	G1/4	DIN EN 175301-803 Form A	0.20 to 0.35	80	-	-
0880380000000000	0.5 to 8	G1/4	DIN EN 175301-803 Form A	0.35 to 0.85	80	-	-
0880480000000000	1 to 16	G1/4	DIN EN 175301-803 Form A	0.40 to 1.20	80	-	-

* Switch is LABS free, plug needs to be ordered separately

For further information
www.norgren.com/info/nec/en165



ELECTRO-MECHANICAL PRESSURE SWITCH

18D Hydraulic

5 to 420 bar

- Microswitch with gold plated contacts
- High number of switching cycles
- Vibration resistant to 15 g
- Microswitch approved by UL and CSA
- Intrinsically safe operation

TECHNICAL DATA

Medium:

For neutral, self lubricating fluids, e.g. hydraulic oil, lube oil, light fuel oil

Operation:

Piston type sensor system

Temperature:

Fluid/Ambient -10 to +80°C

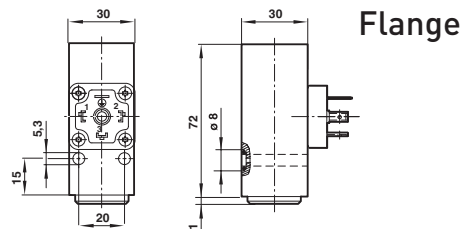
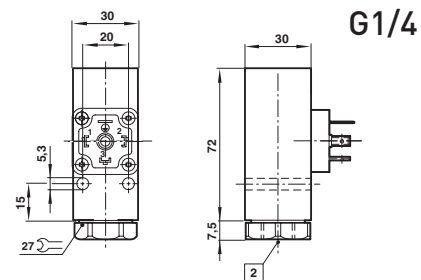
Consult our Technical Service for use below +2°C.

Operating viscosity:

Up to 1000 mm²/s

Repeatability:

±3%, of full scale



MATERIALS

Housing:

Aluminium/steel, zinc diecast/brass

Sealing:

Teflon, perbunan, delrin

Models

Model No.	Pressure range (bar)	Fluid connection	Electrical connection	Switching pressure difference	Max. over pressure (bar)
0882100000000000	5 to 70	G1/4	DIN EN 175301-803 Form A	10.5 to 15	400
0882200000000000	10 to 160	G1/4	DIN EN 175301-803 Form A	11 to 17	400
0882300000000000	25 to 250	G1/4	DIN EN 175301-803 Form A	11 to 17	400
0882400000000000	40 to 420	G1/4	DIN EN 175301-803 Form A	17 to 38	400
0883100000000000	5 to 70	Flange	DIN EN 175301-803 Form A	10.5 to 15	400
0883200000000000	10 to 160	Flange	DIN EN 175301-803 Form A	11 to 17	400
0883300000000000	25 to 250	Flange	DIN EN 175301-803 Form A	11 to 17	400
0883400000000000	40 to 420	Flange	DIN EN 175301-803 Form A	17 to 38	600

Note: Plug included in scope of supply



For further information
www.norgren.com/info/nec/en166

ELECTRO-MECHANICAL PRESSURE SWITCH

20D Series

20D ATEX



20D Allfluid



Allfluid: -1 to 100 bar
 ATEX Allfluid: -1 to 63 bar
 Low Pressure -0.025 to 1.6 bar

- High accuracy
- Robust metal housing (Standard and Low pressure)
- Robust metal housing in weather-resisting version (ATEX)

TECHNICAL DATA

Medium:

For neutral, aggressive (Standard only), non-flammable gases and fluids

Operating pressure:

- 1 to 100 bar (Standard)
- 1 to 63 bar (ATEX)
- 0.025 to 1.6 bar (Low pressure)

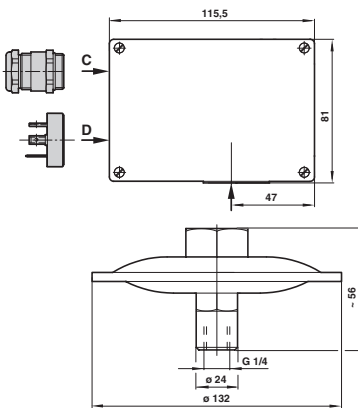
Temperature:

- | | |
|---------------|--|
| Fluid | Ambient |
| -10 to +100°C | -25 to +80°C (Standard and Low pressure) |
| -10 to +75°C | -10 to +75°C (ATEX) |

Repeatability:

±1% of final value

20D Low pressure



Models

ALLFLUID Model No.	Pressure range (bar)	Fluid connection	Electrical connection	Switching pressure difference	Range - Switching pressure difference (bar)			Max. over pressure (bar)	Plug	Bracket - Steel
					Lower	Upper & min.	Upper max.			
1801505000000000	0.5 to 6	G1/2	Gland Pg 13.5	Adjustable	0.80	0.90	5.00	20	-	0574772000000000
1801605000000000	0.5 to 10	G1/2	Gland Pg 13.5	Adjustable	0.90	1.90	8.00	20	-	0574772000000000
1801615000000000	0.5 to 10	G1/2	M20 x 1.5	Adjustable	0.90	1.90	8.00	20	-	0574772000000000
1801715000000000	1 to 16	G1/2	M20 x 1.5	Adjustable	1.70	2.00	12.00	50	-	0574772000000000
1811505000000000	0.5 to 6	G1/2	Gland Pg 13.5	Fixed	0.30	0.35	-	20	-	0574772000000000
1811605000000000	0.5 to 10	G1/2	Gland Pg 13.5	Fixed	0.30	0.40	-	20	-	0574772000000000
1811615000000000	0.5 to 10	G1/2	M20 x 1.5	Fixed	0.30	0.40	-	20	-	0574772000000000
1811715000000000	1 to 16	G1/2	M20 x 1.5	Fixed	0.70	0.80	-	50	-	0574772000000000
ATEX ALLFLUID										
1841615000000000	0.5 to 10	G1/2	M20 x 1.5	Fixed	0.70	0.90	-	20	-	0574772000000000
1851615000000000	0.5 to 10	G1/2	M20 x 1.5	Adjustable	0.70	0.90	8.00	20	-	0574772000000000
LOW PRESSURE										
1812500000000000	0 to 0.025	G1/4	DIN EN 175301-803 Form A	Fixed	0.003	0.004	-	0.5	0570110000000000	0574772000000000
1812600000000000	0 to 0.06	G1/4	DIN EN 175301-803 Form A	Fixed	0.004	0.006	-	0.5	0570110000000000	0574772000000000
1812700000000000	0.004 to 0.16	G1/4	DIN EN 175301-803 Form A	Fixed	0.004	0.008	-	0.5	0570110000000000	0574772000000000
1812800000000000	0 to 0.25	G1/4	DIN EN 175301-803 Form A	Fixed	0.004	0.009	-	0.5	0570110000000000	0574772000000000

Note: Other pressure ranges available. Contact your Express Team.

Accessories



For further information
www.norgren.com/info/nec/en167



ELECTRONIC PRESSURE SWITCH

50D Pneumatic

-1 to 0 bar, -1 to 1 bar, 0 to 6 bar, 0 to 10 bar

Fast error detection through changing colour displays

Easy to use pressure switch with clear display and intuitive programming

Flexible assembly with DIN panel or wall mounting

User selected connection; rear or base

LABS free materials



TECHNICAL DATA

Medium:

Compressed air, filtered (40 µm), lubricated and non-lubricated

Temperature:

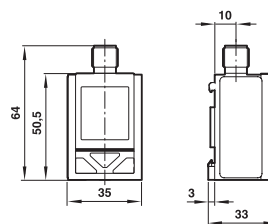
Fluid 0°C ... +60°C

Ambient 0°C ... +60°C

Please consult our technical service for use below +2°C

Display:

Pressure units bar, psi, kPa, InHg Vacuum



Electrical parameters




















Electrical connection:	M12 x 1
Power supply:	UB = 24 V d.c. (17 ... 30 V d.c.)

Electrical connection M12 x 1

PIN-No.	Signal	Cable colour
1	Supply voltage	brown
2	Out 2 (PNP; NPN; analogue)	white
3	0 V	blue
4	Out 1 (PNP; NPN)	black



Models

Model No.	Pressure range (bar)	Over pressure (bar)	Fluid connection	Output signal	Wall mounting clip	Electrical Connector M12 x 1		90° x 2 m long
						Straight x 2 m long	x 5 m long	
	-1 to 0	5	G1/4	2 x PNP				
DS-E1V10P4B2PR00	-1 to 0	5	4 mm Dia. PIF	2 x PNP				
DS-E1V11F4B2PR00	-1 to +1	5	G1/4	2 x PNP				
DS-E1V11P4B2PR00	-1 to +1	5	4 mm Dia. PIF	2 x PNP				
DS-E1P06F4B2PR00	0 to 6	15	G1/4	2 x PNP				
DS-E1P06P4B2PR00	0 to 6	15	4 mm Dia. PIF	2 x PNP				
DS-E1P06F4BPAR00	0 to 6	15	G1/4	1 x PNP + 1 x analogue				
DS-E1P06P4BPAR00	0 to 6	15	4 mm Dia. PIF	1 x PNP + 1 x analogue				
DS-E1P10F4B2PR00	0 to 10	15	G1/4	2 x PNP				
DS-E1P10P4B2PR00	0 to 10	15	4 mm Dia. PIF	2 x PNP				
DS-E1P10F4BPAR00	0 to 10	15	G1/4	1 x PNP + 1 x analogue				
DS-E1P10P4BPAR00	0 to 10	15	4 mm Dia. PIF	1 x PNP + 1 x analogue				



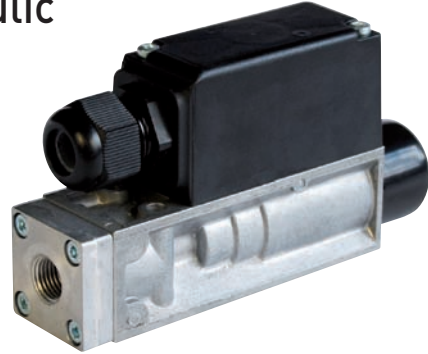
For further information
www.norgren.com/info/nec/en168

ELECTRO-MECHANICAL PRESSURE SWITCH

Herion 8D Series – pneumatic and hydraulic

Pneumatic
Diaphragm actuated
Switching pressure range 0.02 to 30 bar

Hydraulic
Piston actuated
Switching pressure range 5 to 250 bar



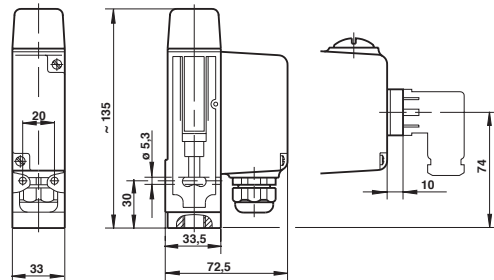
TECHNICAL DATA

Medium:
Air, gas, water, hydraulic oil, lubricating oil and light fuel oil (pneumatic)
Oil treated compressed air, hydraulic oil and other fluids with good anti-friction properties (hydraulic)

Working viscosity:
Up to 1,000 mm²/s

Repeatability:
± 2%

Ambient temperature:
-10°C to +80°C (pneumatic)
0°C to +80°C (hydraulic)



Models

PNEUMATIC SWITCHES							Plug
Model No.	Pressure range	Fluid connection	Electrical connection	Adjustment method	Switching pressure difference (bar)	Max. over pressure (bar)	
0820150000000000	0,2 to 12	G1/4	Gland pg 13,5	Allen screw – cover	0,9 to 1,4	50	-
0820155000000000	0,2 to 12	G1/4	DIN EN 175301-803 Form A	Allen screw – cover	0,9 to 1,4	50	0570110000000000
0820160000000000	0,2 to 12	G1/4	Gland pg 13,5	Rotary knob	0,9 to 1,4	50	-
0820750000000000	0,5 to 30	G1/4	Gland pg 13,5	Allen screw – cover	1,0 to 2,0	50	-
0820850000000000	0,5 to 30	Flange	Gland pg 13,5	Allen screw – cover	1,0 to 2,0	50	-
0820760000000000	0,5 to 30	G1/4	Gland pg 13,5	Rotary knob	1,0 to 2,0	50	-

HYDRAULIC SWITCHES							Plug
Model No.	Pressure range	Fluid connection	Electrical connection	Adjustment method	Switching pressure difference (bar)	Max. over pressure (bar)	
0821051000000000	5 to 70	G1/4	Gland pg 13,5	Hex. screw & cover	7 to 12	250	-
0821055000000000	5 to 70	G1/4	DIN EN 175301-803 Form A	Hex. screw & cover	7 to 12	250	0570110000000000
0821050000000000	10 to 160	G1/4	Gland pg 13,5	Hex. screw & cover	9 to 18	250	-
0821150000000000	10 to 160	Flange	Gland pg 13,5	Hex. screw & cover	9 to 18	250	-
0821060000000000	10 to 160	G1/4	Scaled rotary knob	Rotary knob	9 to 18	250	-
0821097000000000	50 to 250	G1/4	Gland pg 13,5	Hex. screw & cover	12 to 16	340	-

Accessories



For further information
www.norgren.com/info/nec/en170