

2SK3475

VHF- and UHF-band Amplifier Applications

(Note)The TOSHIBA products listed in this document are intended for high frequency Power Amplifier of telecommunications equipment. These TOSHIBA products are neither intended nor warranted for any other use. Do not use these TOSHIBA products listed in this document except for high frequency Power Amplifier of telecommunications equipment.

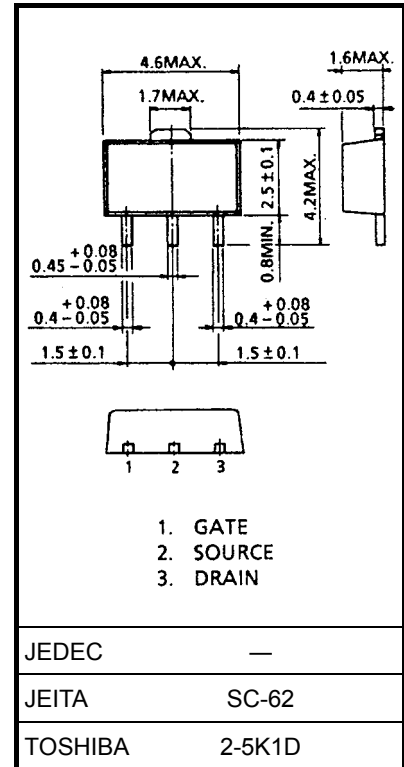
- Output power: $P_O = 630 \text{ mW (min)}$
- Gain: $G_P = 14.9\text{dB (min)}$
- Drain efficiency: $\eta_D = 45\% \text{ (min)}$

Maximum Ratings ($T_a = 25^\circ\text{C}$)

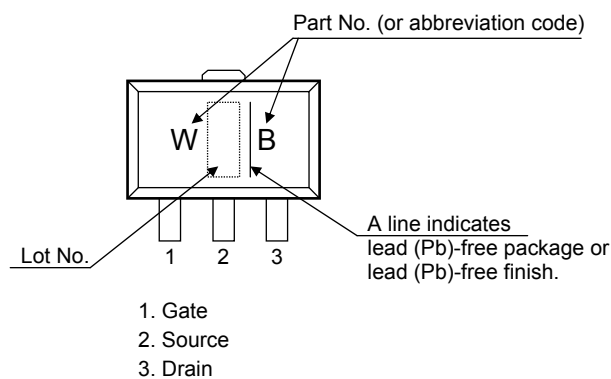
Characteristics	Symbol	Rating	Unit
Drain-source voltage	V_{DSS}	20	V
Gain-source voltage	V_{GSS}	10	V
Drain current	I_D	1	A
Power dissipation	P_D (Note 1)	3	W
Channel temperature	T_{ch}	150	$^\circ\text{C}$
Storage temperature range	T_{stg}	-45~150	$^\circ\text{C}$

Note 1: $T_c = 25^\circ\text{C}$ (When mounted on a 1.6 mm glass epoxy PCB)

Unit: mm



Marking



Caution: This device is sensitive to electrostatic discharge.

Please make enough tool and equipment earthed when you handle.

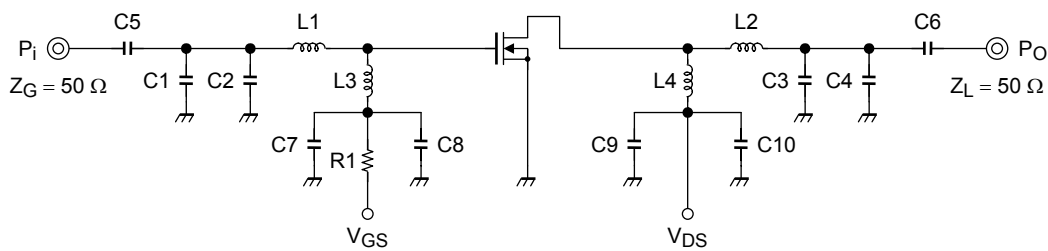
Electrical Characteristics (Ta = 25°C)

Characteristics	Symbol	Test Condition	Min	Typ.	Max	Unit
Drain cut-off current	I_{DSS}	$V_{DS} = 20\text{ V}, V_{GS} = 0\text{ V}$	—	—	5	μA
Gate-source leakage current	I_{GSS}	$V_{GS} = 10\text{ V}$	—	—	5	μA
Threshold voltage	V_{th}	$V_{DS} = 7.2\text{ V}, I_D = 2\text{ mA}$	1.9	2.4	2.9	V
Drain-source on-voltage	$V_{DS(ON)}$	$V_{GS} = 10\text{ V}, I_D = 75\text{ mA}$	—	87	—	mV
Forward transconductance	Y_{fs}	$V_{DS} = 7.2\text{ V}, I_{DS} = 208\text{ mA}$	—	260	—	mS
Input capacitance	C_{iss}	$V_{DS} = 7.2\text{ V}, V_{GS} = 0\text{ V}, f = 1\text{ MHz}$	—	11	—	pF
Output capacitance	C_{oss}	$V_{DS} = 7.2\text{ V}, V_{GS} = 0\text{ V}, f = 1\text{ MHz}$	—	12.5	—	pF
Output power	P_O	$V_{DS} = 7.2\text{ V},$ $I_{idle} = 50\text{ mA} (V_{GS} = \text{adjust}),$ $f = 520\text{ MHz}, P_i = 20\text{ mW},$	630	—	—	mW
Drain efficiency	η_D		45	—	—	%
Power gain	G_p		14.9	—	—	dB
Low voltage output power	P_{OL}	$V_{DS} = 6.0\text{ V},$ $I_{idle} = 50\text{ mA} (V_{GS} = \text{adjust}),$ $f = 520\text{ MHz}, P_i = 20\text{ mW},$	500	—	—	mW

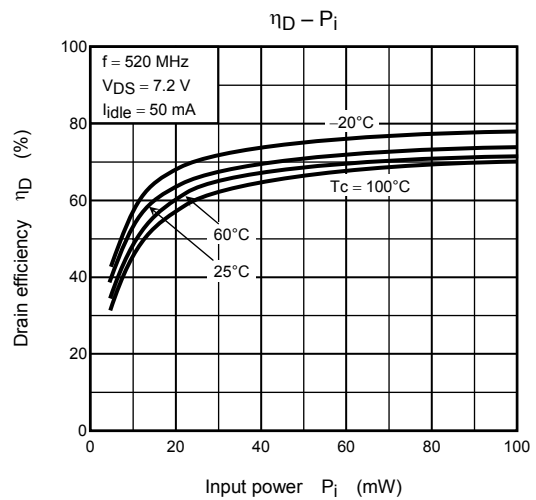
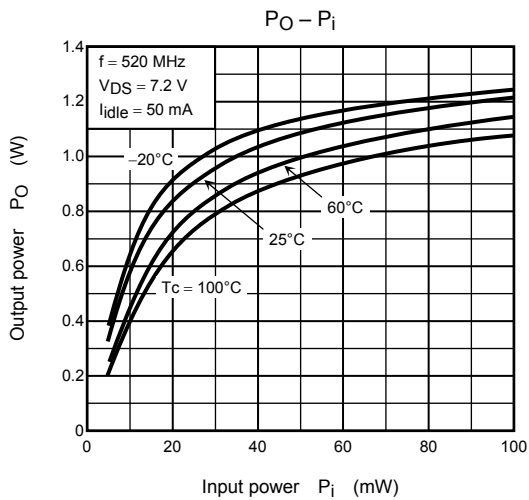
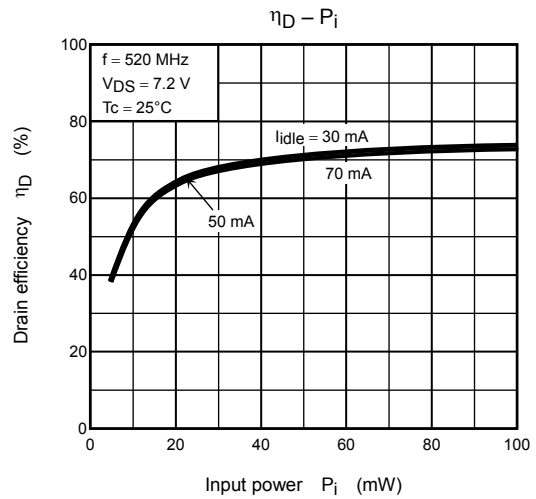
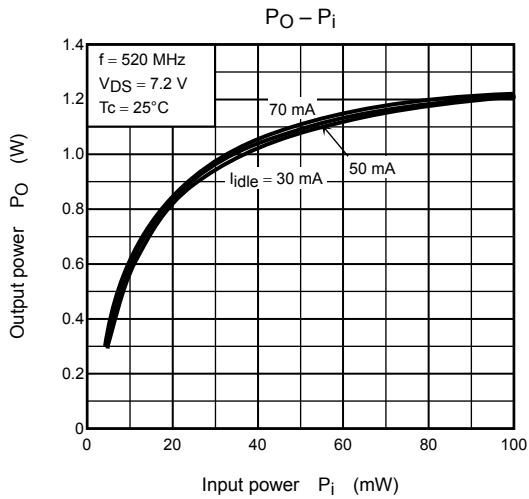
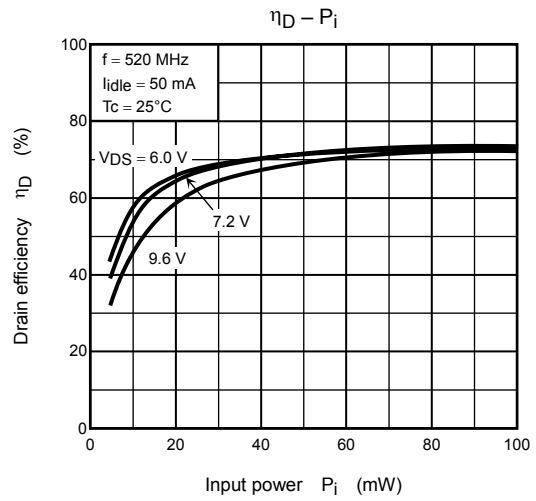
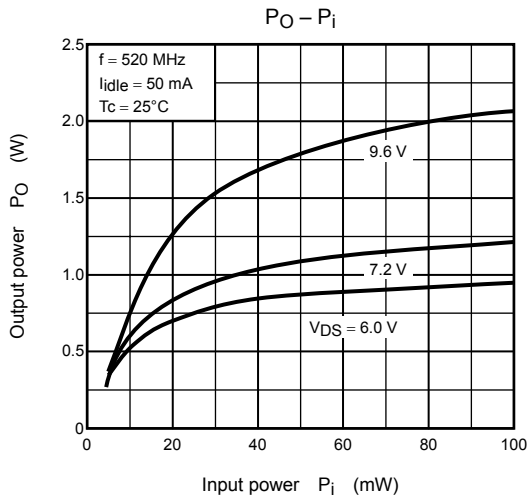
Note 2: These characteristic values are measured using measurement tools specified by Toshiba.

Output Power Test Fixture

(Test Condition: $f = 520\text{ MHz}, V_{DS} = 7.2\text{ V}, I_{idle} = 50\text{ mA}, P_i = 20\text{ mW}$)



- | | | |
|----------------------|-------------------------------------------------|--------------------|
| C1: 10 pF | L1: $\phi 0.8\text{ mm}$ enamel wire, 2.2ID, 1T | R1: 1.5 k Ω |
| C2: 10 pF | L2: $\phi 0.8\text{ mm}$ enamel wire, 2.2ID, 1T | |
| C3: 9 pF | L3: $\phi 0.8\text{ mm}$ enamel wire, 5.5ID, 4T | |
| C4: 6 pF | L4: $\phi 0.8\text{ mm}$ enamel wire, 5.5ID, 8T | |
| C5: 2200 pF | | |
| C6: 2200 pF | | |
| C7: 10 μF | | |
| C8: 10000 pF | | |
| C9: 10 μF | | |
| C10: 10000 pF | | |



Note 3: These are only typical curves and devices are not necessarily guaranteed at these curves.

RESTRICTIONS ON PRODUCT USE

030619EAA

- The information contained herein is subject to change without notice.
- The information contained herein is presented only as a guide for the applications of our products. No responsibility is assumed by TOSHIBA for any infringements of patents or other rights of the third parties which may result from its use. No license is granted by implication or otherwise under any patent or patent rights of TOSHIBA or others.
- TOSHIBA is continually working to improve the quality and reliability of its products. Nevertheless, semiconductor devices in general can malfunction or fail due to their inherent electrical sensitivity and vulnerability to physical stress. It is the responsibility of the buyer, when utilizing TOSHIBA products, to comply with the standards of safety in making a safe design for the entire system, and to avoid situations in which a malfunction or failure of such TOSHIBA products could cause loss of human life, bodily injury or damage to property.
In developing your designs, please ensure that TOSHIBA products are used within specified operating ranges as set forth in the most recent TOSHIBA products specifications. Also, please keep in mind the precautions and conditions set forth in the "Handling Guide for Semiconductor Devices," or "TOSHIBA Semiconductor Reliability Handbook" etc..
- The TOSHIBA products listed in this document are intended for high frequency Power Amplifier of telecommunications equipment. These TOSHIBA products are neither intended nor warranted for any other use. Do not use these TOSHIBA products listed in this document except for high frequency Power Amplifier of telecommunications equipment.
- The TOSHIBA products listed in this document are intended for usage in general electronics applications (computer, personal equipment, office equipment, measuring equipment, industrial robotics, domestic appliances, etc.). These TOSHIBA products are neither intended nor warranted for usage in equipment that requires extraordinarily high quality and/or reliability or a malfunction or failure of which may cause loss of human life or bodily injury ("Unintended Usage"). Unintended Usage include atomic energy control instruments, airplane or spaceship instruments, transportation instruments, traffic signal instruments, combustion control instruments, medical instruments, all types of safety devices, etc.. Unintended Usage of TOSHIBA products listed in this document shall be made at the customer's own risk.
- TOSHIBA products should not be embedded to the downstream products which are prohibited to be produced and sold, under any law and regulations.