

Accessories and Spare Parts

For 3RT, 3RH Contactors and Contactor Relays

Accessories for 3RT, 3RH contactors
and contactor relays

Overview

Snap-on auxiliary switch blocks

The auxiliary switch blocks and the maximum number of blocks that can be mounted are described in the sections "Motor Contactors" and "Contactor Relays".

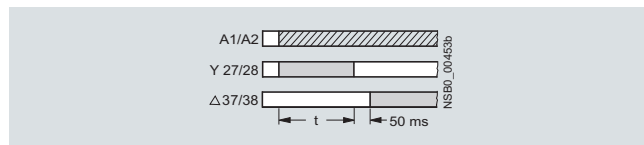
Solid-state time-delay auxiliary switch block

The timer module, which is available in the "ON-DELAY" and "OFF-DELAY" versions, allows time-delayed functions up to 100 s (3 distinct delay ranges).

It contains a relay with one NO contact and one NC contact; depending on the version, the relay is switched either after an ON-delay or after an OFF-delay.

The timer module with "WYE-DELTA FUNCTION" is equipped with one delayed and one instantaneous NO contact, with a dead time of 50 ms between the two. The delay time of the NO contact can be adjusted between 1.5 s and 30 s.

Wye-delta function:



The contactor on which the solid-state, time-delay auxiliary switch block is mounted operates without a delay.

Size S00

The solid-state, time-delay auxiliary switch block is fitted onto the front side of the contactor. The timer module is supplied with power directly by plug-in contacts through the coil terminals of the contactor, in parallel with A1/A2. The timing function is activated by closing the contactor on which the auxiliary switch block is mounted. The OFF-delay version operates without an auxiliary voltage; minimum ON period: 200 ms.

A varistor is integrated in the timer module in order to damp opening surges in the contactor coil.

The solid-state, time-delay auxiliary switch block cannot be mounted on size S00 coupling relays.

Sizes S0 to S12

The solid-state, time-delay auxiliary switch block is fitted onto the front side of the contactor.

The timer module is supplied with power through two terminals (A1/A2); the time delay of the auxiliary switch block can be activated either by a parallel link to any contactor coil or by any power source.

The OFF-delay version operates without an auxiliary voltage; minimum ON period: 200 ms.

A single-pole auxiliary switch block can be snapped onto the front of the contactor in addition to the timer module.

The timer module has no integrated components for overvoltage damping.

Solid-state time-delay block with semiconductor output

The timer module in the "ON-DELAY" and "OFF-DELAY with auxiliary voltage" versions allows time-delayed functions up to 100 s (3 distinct delay ranges). Contactors fitted with a time-delay block close or open after a delay according to the set time.

The ON-delay variant of the timing relay is connected in series with the contactor coil; terminal A1 of this coil must not be connected.

With the OFF-delay variant of the timing relay, the contactor coil is contacted directly through the relay; terminals A1 and A2 of the contactor coil must not be connected.

The timing relays are suitable for both AC and DC operation.

Size S00

The version for size S00 contactors is fitted onto the front of the contactor (with the supply voltage switched off) and then slid into its latched position; at the same time, the timing relay is connected by means of plug-in contacts to coil terminals A1 and A2 of the contactor. Any contactor coil terminals which are not required are sealed off by means of covers on the enclosure of the time-delay block, to prevent them from being connected inadvertently.

A varistor is integrated in the timer module in order to damp opening surges in the contactor coil.

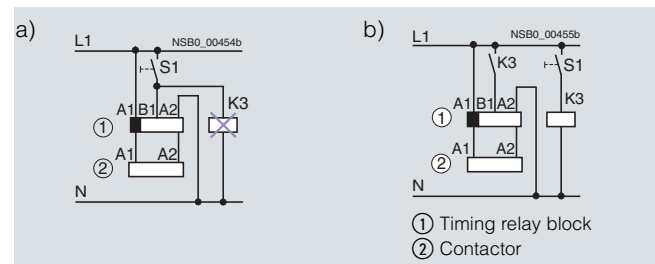
The solid-state, time-delay block cannot be mounted on size S00 coupling relays.

Sizes S0 to S3

The time-delay block for size S0 to S3 contactors is plugged into coil terminals A1 and A2 on top of each contactor; the timing relay is connected both electrically and mechanically by means of pins.

A varistor is integrated in the timer module in order to damp opening surges in the contactor coil.

Configuring note:



The activation of loads parallel to the start input is not permissible when using AC control voltage (see (a) in the circuit diagram).

The 3RT19 16-2D... / 3RT19 26-2D... OFF-delay timing relay blocks have a zero potential start input B1. This means that if there is a parallel load on terminal B1, activation can be simulated with AC voltage. In this case, the additional load (e. g. contactor K3) must be wired according to (b).

OFF-delay device for size S00 to S3 contactors

AC and DC operation

IEC 60947, EN 60947.

For screw and snap-on mounting onto 35 mm standard mounting rail. The OFF-delay devices have screw terminals.

The OFF-delay device prevents a contactor from dropping out unintentionally when there is a short-time voltage dip or voltage failure. It supplies a downstream, DC-operated contactor with the necessary energy during a voltage dip, ensuring that the contactor does not trip. The 3RT19 16 OFF-delay devices are specifically designed for operation with the 3RT contactors and 3RH contactor relays of the SIRIUS series.

The OFF-delay device operates without external voltage on a capacitive basis, and can be energized with either AC or DC (24 V version only for DC operation). Voltage matching, which is only necessary with AC operation, is performed using a rectifier bridge.

Accessories and Spare Parts

For 3RT, 3RH Contactors and Contactor Relays

Accessories for 3RT, 3RH contactors and contactor relays

A contactor opens after a delay when the capacitors of the solenoid coil, built into the OFF-delay device, are switched in parallel. In the event of voltage failures, the capacitors are discharged via the solenoid coil and thereby delay the opening of the contactor.

If the command devices are upstream of the OFF-delay device in the circuit, the OFF-delay takes effect with every opening operation. If the opening operation is downstream of the OFF-delay device, an OFF-delay only applies in the event of failure of the mains voltage.

Operation

In the case of the versions for rated control supply voltages of 110 V and 230 V, either AC voltage or DC voltage can be applied on the line side, whereas the variant for 24 V is designed for DC operation only.

A DC-operated contactor is connected to the output in accordance with the input voltage that is applied.

The mean value of the OFF-delay is approximately 1.5 times the specified minimum time.

Surge suppressors

- Without LED (also for Cage Clamp terminals) size S00, S0, S2, S3, S6 to S12
- With LED (also for Cage Clamp terminals) size S00

All 3RT1 contactors and 3RH1 contactor relays can be retrofitted with RC elements or varistors for damping opening surges in the coil. Diodes or diode assemblies (comprising noise suppression diodes and Zener diodes for rapid switch-off) can be used.

The surge suppressors are plugged onto the front of size S00 contactors. Space is provided for them next to a snap-on auxiliary switch block.

With all size S0 to S3 contactors, varistors, RC elements and diode assemblies can be plugged on directly at the coil terminals, either on the top or underneath.

The plug-in direction of the diodes and diode assemblies is determined by a coding device.

Coupling relays are supplied either without surge suppression or with a varistor or diode connected as standard, according to the version.

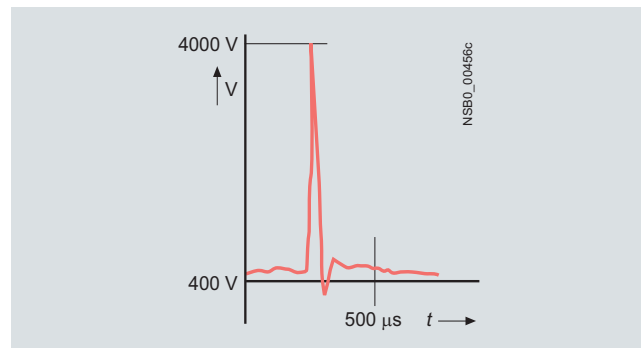
Note:

The OFF-delay times of the NO contacts and the ON-delay times of the NC contacts increase if the contactor coils are damped against voltage peaks (noise suppression diode 6 to 10 times; diode assemblies 2 to 6 times, varistor +2 to 5 ms).

Electromagnetic interference suppression module, 3-phase for size S00 contactors



A so-called counter-e.m.f. (electromotive force) is produced when motors or various inductive loads are turned off. Voltage peaks of up to 4000 V may occur as a result, with a frequency spectrum from 1 kHz to 10 MHz and a rate of voltage variation from 0.1 to 20 V/ns.



Capacitive input to various analog and digital signals makes it necessary to suppress interference in the load circuit.

Reducing contact arcing

The connection between the main current path and the EMC suppression module enables contact arcing, which is responsible for contact erosion and the majority of clicking noises, to be reduced; this in turn is conducive to an electromagnetically compatible design.

Higher operational reliability

Since the EMC suppression module achieves a significant reduction in radio-frequency components and the voltage level in three phases, the contact endurance is also improved considerably. This makes an important contribution towards enhancing the reliability and availability of the system as a whole.

Accessories and Spare Parts

For 3RT, 3RH Contactors and Contactor Relays

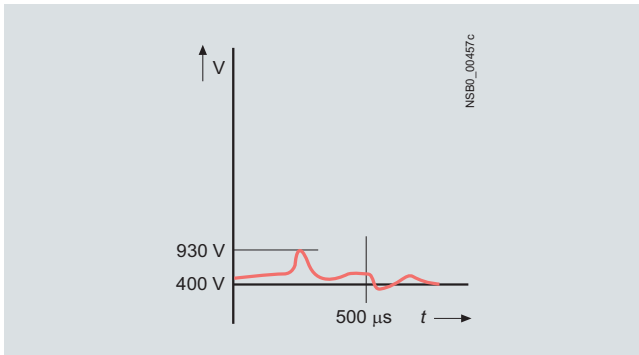
Accessories for 3RT, 3RH contactors and contactor relays

Dispensing with fine graduations

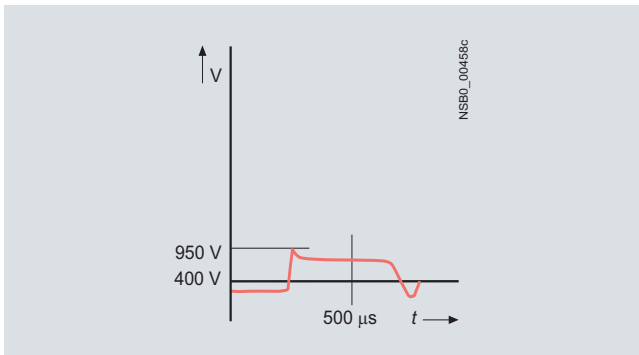
There is no need for fine graduations within each performance class, as smaller motors inherently have a higher inductance, so that one solution for all fixed-speed operating mechanisms up to 5.5 kW is adequate.

Two electrical versions are available:

- The advantages of the RC circuit lie mainly in the reduction in the rate of rise and in its RF damping ability. The selected values ensure effective interference suppression over a wide range.



- The varistor circuit can absorb a high energy level and can also be used for frequencies ranging from 10 to 400 Hz (closed-loop controlled operating mechanisms). There is no limiting below the knee-point voltage, however.



Additional load module

- Size S00 for plugging onto the front of the contactors with and without auxiliary switch block

Coupling links for mounting on contactors of sizes S0 to S3

DC operation

IEC 60947 and EN 60947.

The coupling link is suitable for use in any climate. It is finger-safe according to EN 50274. The terminal designations comply with EN 50005.

System-compatible operation with 24 V DC, operating range 17 to 30 V.

Low power consumption in conformity with the technical specifications of the solid-state systems. An LED indicates the switching state.

Surge suppression

The 3RH19 24-1GP11 coupling link has an integrated surge suppressor (varistor) for the contactor coil being switched.

Mounting

The 3RH19 24-1GP11 coupling link is mounted directly on the contactor coil.

Solder pin adapters

The solder pin adapters for the size S00 contactors are available in two versions:

- Solder pin adapter for contactors with one integrated auxiliary contact
- Solder pin adapter for contactors with mounted 4-pole auxiliary switch block

Screw adapters

Plug-on adapters improve the accessibility of the screw fixing for size S0 contactors. As a result it is possible to position the screwdriver vertically even when using insulated screwdrivers or power screwdrivers.

Optionally the adapters can be rotated through 90° before mounting.

Sealable covers for sizes S00 to S12

When contactors and contactor relays are used in safety-oriented applications, it must be ensured that it is impossible to operate the contactors manually.

For SIRIUS contactors there are sealable covers available for this purpose as accessories; these prevent accidental manual operation. These are transparent molded-plastic caps with a bracket that enables the contactor to be sealed.

Accessories and Spare Parts

For 3RT, 3RH Contactors and Contactor Relays

Accessories for 3RT, 3RH contactors and contactor relays

Selection and ordering data

PU (UNIT, SET, M) = 1
 PS* = 1 unit
 PG = 101



3RH19 11-1HA..
3RH19 11-1FA..



3RH19 11-2HA..



3RH19 21-1HA..



3RH19 21-2HA..
3RH19 21-2FA..



3RH19 11-1AA..



3RH19 11-1LA..

For contactors	Auxiliary contacts	DT	Screw terminals	Weight per PU approx.	DT	Cage Clamp terminals	Weight per PU approx.
	Ident. No.	Version	Order No.	Price per PU		Order No.	Price per PU
Type	 NO NC NO NC			kg			kg

Auxiliary switch blocks for snapping onto the front according to EN 50012

Size S00

For assembling contactors with 2, 4 or 5 auxiliary contacts

3RT10 1.-1...1,	11 E	--	1	--	--	▶	3RH19 11-1HA01	0.060	▶	3RH19 11-2HA01	0.060
3RT10 1.-2...1	22 E	1	2	--	--	▶	3RH19 11-1HA12	0.060	▶	3RH19 11-2HA12	0.060
Ident. No. 10 E	23 E	1	3	--	--	▶	3RH19 11-1HA13	0.060	▶	3RH19 11-2HA13	0.060
	32 E	2	2	--	--	▶	3RH19 11-1HA22	0.060	▶	3RH19 11-2HA22	0.060

Sizes S0 ... S12¹⁾

4-pole

3RT10 2,	31	3	1	--	--	▶	3RH19 21-1HA31	0.075	▶	3RH19 21-2HA31	0.075
3RH11, 3RT1. 7	22	2	2	--	--	▶	3RH19 21-1HA22	0.075	▶	3RH19 21-2HA22	0.075
	13	1	3	--	--	▶	3RH19 21-1HA13	0.075	▶	3RH19 21-2HA13	0.075
	22²⁾	2	2	--	--	B	3RH19 21-1XA22-0MA0	0.075	D	3RH19 21-2XA22-0MA0	0.075

Auxiliary switch blocks for snapping onto the front according to EN 50005

Size S00

2 or 4-pole auxiliary switch blocks for assembling contactors with 3 or 5 auxiliary contacts

3RT1. 1,	20	2	--	--	--	▶	3RH19 11-1FA20	0.050	▶	3RH19 11-2FA20	0.050
3RH11,	11	1	1	--	--	▶	3RH19 11-1FA11	0.050	▶	3RH19 11-2FA11	0.050
3RH14	02	--	2	--	--	▶	3RH19 11-1FA02	0.050	▶	3RH19 11-2FA02	0.050
	11 U	--	--	1	1	▶	3RH19 11-1FB11	0.050	A	3RH19 11-2FB11	0.050
	40	4	--	--	--	▶	3RH19 11-1FA40	0.060	▶	3RH19 11-2FA40	0.060
	31	3	1	--	--	▶	3RH19 11-1FA31	0.060	▶	3RH19 11-2FA31	0.060
	22	2	2	--	--	▶	3RH19 11-1FA22	0.060	▶	3RH19 11-2FA22	0.060
	22 U	--	--	2	2	▶	3RH19 11-1FC22	0.060	▶	3RH19 11-2FC22	0.060
	11, 11 U	1	1	1	1	▶	3RH19 11-1FB22	0.060	B	3RH19 11-2FB22	0.060

1- and 2-pole auxiliary switch blocks with cable entry from one side

• Cable entry from above

3RT1. 1,	--	1	--	--	--	▶	3RH19 11-1AA10	0.015	--		
3RH11,	--	--	1	--	--	▶	3RH19 11-1AA01	0.015	--		
3RH14	--	1	1	--	--	▶	3RH19 11-1LA11	0.045	--		
	--	2	--	--	--	▶	3RH19 11-1LA20	0.045	--		

• Cable entry from below

3RT1. 1,	--	1	--	--	--	▶	3RH19 11-1BA10	0.015	--		
3RH11,	--	--	1	--	--	▶	3RH19 11-1BA01	0.015	--		
3RH14	--	1	1	--	--	▶	3RH19 11-1MA11	0.045	--		
	--	2	--	--	--	▶	3RH19 11-1MA20	0.045	--		

For multi-unit packing and reusable packaging, see "Appendix --> Order information".

¹⁾ Exception: 3RT12, 3RT16.

²⁾ With identification numbers 5, 6, 7, 8.

Accessories and Spare Parts

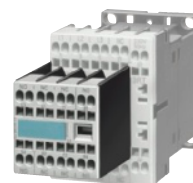
For 3RT, 3RH Contactors and Contactor Relays

Accessories for 3RT, 3RH contactors and contactor relays

PU (UNIT, SET, M) = 1
 PS* = 1 unit
 PG = 101



3RH19 11-1GA..



3RH19 11-2GA..

For contactor relays		Contacts	DT	Screw terminals		Weight per PU approx.	DT	Cage Clamp terminals		Weight per PU approx.
Ident. No.	Version		Order No.	Price per PU		kg	Order No.	Price per PU		kg
		NO NC								

Snap-on auxiliary switch blocks according to EN 50011

For assembling contactor relays with 8 contacts

3RH11 40,	80E	4	--	▶	3RH19 11-1GA40	0.060	▶	3RH19 11-2GA40	0.060
3RH14 40	71E	3	1	▶	3RH19 11-1GA31	0.060	▶	3RH19 11-2GA31	0.060
(Ident. No. 40E)	62E	2	2	▶	3RH19 11-1GA22	0.060	▶	3RH19 11-2GA22	0.060
	53E	1	3	▶	3RH19 11-1GA13	0.060	▶	3RH19 11-2GA13	0.060
	44E	--	4	▶	3RH19 11-1GA04	0.060	▶	3RH19 11-2GA04	0.060

For multi-unit packing and reusable packaging, see "Appendix --> Order information".

Accessories and Spare Parts

For 3RT, 3RH Contactors and Contactor Relays

Accessories for 3RT, 3RH contactors
and contactor relays

PU (UNIT, SET, M) = 1
PS* = 1 unit
PG = 101



3RH19 21-1DA11
3RH19 21-1JA11



3RH19 21-2DA11
3RH19 21-2JA11



3RH19 21-1EA...
3RH19 21-1KA...



3RH19 21-2EA...
3RH19 21-2KA...

For contactors	Auxiliary contacts	DT	Screw terminals	⊕	Weight per PU approx.	DT	Cage Clamp terminals	⊕	Weight per PU approx.
	Version		Order No.	Price per PU			Order No.	Price per PU	
Type	NO NC				kg				kg

Laterally mountable auxiliary switch blocks according to EN 50012

Sizes S0 ... S12

First laterally mountable auxiliary switch block (right or left), 2-pole

3RT1. 2 ... 3RT1. 7	1	1	▶	3RH19 21-1DA11	0.050	▶	3RH19 21-2DA11	0.050
---------------------	---	---	---	-----------------------	-------	---	-----------------------	-------

Sizes S3 ... S12

Second laterally mountable auxiliary switch block (right or left), 2-pole

3RT1. 4 ... 3RT1. 7	1	1	▶	3RH19 21-1JA11	0.050	▶	3RH19 21-2JA11	0.050
---------------------	---	---	---	-----------------------	-------	---	-----------------------	-------

Laterally mountable auxiliary switch blocks according to EN 50005

Sizes S0 ... S12

First laterally mountable auxiliary switch block (right or left), 2-pole

3RT1. 2 ... 3RT1. 7	2	--	▶	3RH19 21-1EA20	0.050	▶	3RH19 21-2EA20	0.050
	1	1	▶	3RH19 21-1EA11	0.050		--	
	--	2	▶	3RH19 21-1EA02	0.050	▶	3RH19 21-2EA02	0.050

Sizes S3 ... S12

Second laterally mountable auxiliary switch block (right or left), 2-pole

3RT1. 4 ... 3RT1. 7	2	--	▶	3RH19 21-1KA20	0.050 D		3RH19 21-2KA20	0.050
	1	1	▶	3RH19 21-1KA11	0.050		--	
	--	2	▶	3RH19 21-1KA02	0.050 D		3RH19 21-2KA02	0.050

Accessories and Spare Parts

For 3RT, 3RH Contactors and Contactor Relays

Accessories for 3RT, 3RH contactors and contactor relays

PU (UNIT, SET, M) = 1
 PS* = 1 unit
 PG = 101



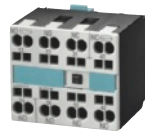
3RH19 11-1NF..



3RH19 11-2NF..



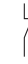



3RH19 21-1FE22



3RH19 21-2JE22

3RH19 21-2DE11
3RH19 21-2JE11

For contactors	Version	Contacts	DT	Screw terminals		Weight per PU approx.	DT	Cage Clamp terminals		Weight per PU approx.
				Order No.	Price per PU			Order No.	Price per PU	
		Version								
		   								
Type		NO NO ¹⁾ NC ¹⁾ NC				kg				kg

Solid-state compatible auxiliary switch blocks for snapping onto the front, according to EN 50005

Size S00

3RT1. 1, 3RH11, 3RH14	For operation in dusty atmosphere and solid-state circuits with rated operational currents $I_e/AC-14$ and DC-13 from 1 mA to 300 mA at 3 V to 60 V. Hard gold-plated contacts. No mirror contacts.	1 -- -- 1 2 -- -- -- -- -- -- 2	▶ ▶ A	3RH19 11-1NF11 3RH19 11-1NF20 3RH19 11-1NF02	0.045 A 0.045 A 0.045 A	3RH19 11-2NF11 3RH19 11-2NF20 3RH19 11-2NF02	0.045 0.045 0.045
-----------------------------	---	---------------------------------------	-------------	---	-------------------------------	---	-------------------------

Sizes S0 ... S12

3RT1. 2 ... 3RT1. 7	For operation in dusty atmosphere and solid-state circuits with rated operational currents $I_e/AC-14$ and DC-13 from 1 mA to 300 mA at 3 V to 60 V. Hard gold-plated contacts. Mirror contacts acc. to EN 60947-4-1, Appendix F	1 1 1 1	▶	3RH19 21-1FE22	0.070 B	3RH19 21-2FE22	0.070
---------------------------	--	---------	---	-----------------------	---------	-----------------------	-------

Solid-state compatible auxiliary switch blocks, laterally mountable, according to EN 50012

Sizes S0 ... S12

First laterally mountable auxiliary switch block (right or left), 2-pole

3RT1. 2 ... 3RT1. 7	1 NO + 1 NC solid-state compatible auxiliary switches For operation in dusty atmosphere and solid-state circuits with rated operational currents $I_e/AC-14$ and DC-13 from 1 mA to 300 mA at 3 V to 60 V. Hard gold-plated contacts. Mirror contacts acc. to EN 60947-4-1, Appendix F	1 -- -- 1	▶	3RH19 21-2DE11	0.050
---------------------------	---	-----------	---	-----------------------	-------

Sizes S3 ... S12

Second laterally mountable auxiliary switch block (right or left), 2-pole

3RT1. 4 ... 3RT1. 7	1 NO + 1 NC solid-state compatible auxiliary switches For operation in dusty atmosphere and solid-state circuits with rated operational currents $I_e/AC-14$ and DC-13 from 1 mA to 300 mA at 3 V to 60 V. Hard gold-plated contacts. Mirror contacts acc. to EN 60947-4-1, Appendix F	1 -- -- 1	▶	3RH19 21-2JE11	0.050
---------------------------	---	-----------	---	-----------------------	-------

¹⁾ 1 NO + 1 NC standard auxiliary switches:
 see Technical Information LV 1 T → "Technical specifications".

Accessories and Spare Parts

For 3RT, 3RH Contactors and Contactor Relays

Accessories for 3RT, 3RH contactors and contactor relays

For contactors	Auxiliary contacts	Rated control supply voltage $U_s^{1)}$	Time setting range t	DT	Order No.	Price per PU	PU (UNIT, SET, M)	PS*	PG	Weight per PU approx.
Type		V	s							kg

Solid-state time-delay auxiliary switch blocks for snapping onto the front, terminal designations according to DIN 46199-5

Size S00



3RT19 16-2...

ON-delay (varistor integrated)

3RT1. 1, 3RH11 ²⁾ 3RH14	1 NO + 1 NC	24 AC/DC ³⁾	0.05 ... 1	▶	3RT19 16-2EJ11		1	1 unit	101	0.090
			0.5 ... 10	▶	3RT19 16-2EJ21					
			5 ... 100	B	3RT19 16-2EJ31					
	100 ... 127 AC ³⁾	0.05 ... 1	C	0.05 ... 1	▶	3RT19 16-2EC11	1	1 unit	101	0.090
				0.5 ... 10	▶	3RT19 16-2EC21				
				5 ... 100	▶	3RT19 16-2EC31				
200 ... 240 AC ³⁾	0.05 ... 1	D	0.05 ... 1	▶	3RT19 16-2ED11	1	1 unit	101	0.090	
			0.5 ... 10	▶	3RT19 16-2ED21					
			5 ... 100	▶	3RT19 16-2ED31					

OFF-delay without auxiliary voltage (varistor integrated)⁴⁾

3RT1. 1, 3RH11 ²⁾ 3RH14	1 NO + 1 NC	24 AC/DC ³⁾	0.05 ... 1	▶	3RT19 16-2FJ11	1	1 unit	101	0.090	
			0.5 ... 10	▶	3RT19 16-2FJ21					
			5 ... 100	▶	3RT19 16-2FJ31					
	100 ... 127 AC/DC ³⁾	0.05 ... 1	C	0.05 ... 1	▶	3RT19 16-2FK11	1	1 unit	101	0.090
				0.5 ... 10	▶	3RT19 16-2FK21				
				5 ... 100	B	3RT19 16-2FK31				
200 ... 240 AC/DC ³⁾	0.05 ... 1	D	0.05 ... 1	▶	3RT19 16-2FL11	1	1 unit	101	0.090	
			0.5 ... 10	▶	3RT19 16-2FL21					
			5 ... 100	▶	3RT19 16-2FL31					

OFF-delay with auxiliary voltage

3RT10 1 3RH11	1 CO	24 AC/DC	0.5 ... 10	B	3RT19 16-2LJ21	1	1 unit	101	0.090
		100 ... 127 AC	0.5 ... 10	B	3RT19 16-2LC21				
		200 ... 240 AC	0.5 ... 10	C	3RT19 16-2LD21				

Wye-delta function (varistor integrated)

3RT10 1 ²⁾	1 NO delayed + 1 NO instan- taneous, dead time 50 ms	24 AC/DC ³⁾	1.5 ... 30	▶	3RT19 16-2GJ51	1	1 unit	101	0.090
		100 ... 127 AC ³⁾	1.5 ... 30	D	3RT19 16-2GC51				
		200 ... 240 AC ³⁾	1.5 ... 30	▶	3RT19 16-2GD51				

Sizes S0 ... S12

With ON-delay

3RT10, 3RT13, 3RT14, 3RT15	1 NO + 1 NC	24 AC/DC ⁵⁾	0.05 ... 1	D	3RT19 26-2EJ11	1	1 unit	101	0.090	
			0.5 ... 10	▶	3RT19 26-2EJ21					
			5 ... 100	A	3RT19 26-2EJ31					
	100 ... 127 AC ⁵⁾	0.05 ... 1	C	0.05 ... 1	▶	3RT19 26-2EC11	1	1 unit	101	0.090
				0.5 ... 10	▶	3RT19 26-2EC21				
				5 ... 100	D	3RT19 26-2EC31				
200 ... 240 AC ⁵⁾	0.05 ... 1	D	0.05 ... 1	▶	3RT19 26-2ED11	1	1 unit	101	0.090	
			0.5 ... 10	▶	3RT19 26-2ED21					
			5 ... 100	B	3RT19 26-2ED31					

OFF-delay without auxiliary voltage⁴⁾

3RT10, 3RT13, 3RT14, 3RT15	1 NO + 1 NC	24 AC/DC ⁵⁾	0.05 ... 1	▶	3RT19 26-2FJ11	1	1 unit	101	0.090	
			0.5 ... 10	▶	3RT19 26-2FJ21					
			5 ... 100	▶	3RT19 26-2FJ31					
	100 ... 127 AC ⁵⁾	0.05 ... 1	D	0.05 ... 1	▶	3RT19 26-2FK11	1	1 unit	101	0.090
				0.5 ... 10	▶	3RT19 26-2FK21				
				5 ... 100	C	3RT19 26-2FK31				
200 ... 240 AC ⁵⁾	0.05 ... 1	D	0.05 ... 1	▶	3RT19 26-2FL11	1	1 unit	101	0.090	
			0.5 ... 10	A	3RT19 26-2FL21					
			5 ... 100	A	3RT19 26-2FL31					

Wye-delta function

3RT10, 3RT13, 3RT14, 3RT15	1 NO, delayed + 1 NO instan- taneous, dead time 50 ms	24 AC/DC ⁵⁾	1.5 ... 30	▶	3RT19 26-2GJ51	1	1 unit	101	0.090
		100 ... 127 AC ⁵⁾	1.5 ... 30	▶	3RT19 26-2GC51				
		200 ... 240 AC ⁵⁾	1.5 ... 30	▶	3RT19 26-2GD51				

1) The AC voltages are valid for 50 Hz and 60 Hz.

2) Cannot be fitted onto coupling relays.

3) The terminals for the control supply voltage are connected to the contactor by the integrated spring contacts of the solid-state time-delay auxiliary switch above it when this switch is mounted.

4) Setting of output contacts in as-supplied state not defined (bistable relay). Application of the control supply voltage once results in contact changeover to the correct setting.

5) Terminals A1 and A2 for the control supply voltage of the solid-state time-delay auxiliary switch must be connected to the associated contactor by means of connecting cables.

Accessories and Spare Parts

For 3RT, 3RH Contactors and Contactor Relays

Accessories for 3RT, 3RH contactors and contactor relays

For contactors	Rated control supply voltage U_s	Time setting range t	DT	Order No.	Price per PU	PU (UNIT, SET, M)	PS*	PG	Weight per PU approx.
Type	V	s							kg

Solid-state time-delay blocks with semiconductor output

Size S00



3RT19 16-2C...



3RT19 16-2D...

For mounting onto the front of contactors

• ON-delay (varistor integrated)

3RT1. 1, 3RH11 ¹⁾ 3RH14	24 ... 66 AC/DC	0.05 ... 1	B	3RT19 16-2CG11		1	1 unit	101	0.050
		0.5 ... 10	▶	3RT19 16-2CG21		1	1 unit	101	0.050
		5 ... 100	B	3RT19 16-2CG31		1	1 unit	101	0.050
3RT19 16-2C...	90 ... 240 AC/DC	0.05 ... 1	D	3RT19 16-2CH11		1	1 unit	101	0.050
		0.5 ... 10	▶	3RT19 16-2CH21		1	1 unit	101	0.050
		5 ... 100	▶	3RT19 16-2CH31		1	1 unit	101	0.050

• OFF-delay with auxiliary voltage (varistor integrated)

3RT1. 1, 3RH11 ¹⁾ 3RH14	24 ... 66 AC/DC	0.05 ... 1	C	3RT19 16-2DG11		1	1 unit	101	0.060
		0.5 ... 10	B	3RT19 16-2DG21		1	1 unit	101	0.060
		5 ... 100	B	3RT19 16-2DG31		1	1 unit	101	0.060
3RT19 16-2D...	90 ... 240 AC/DC	0.05 ... 1	D	3RT19 16-2DH11		1	1 unit	101	0.060
		0.5 ... 10	▶	3RT19 16-2DH21		1	1 unit	101	0.060
		5 ... 100	B	3RT19 16-2DH31		1	1 unit	101	0.060

Sizes S0 ... S3

For mounting onto coil terminals on top of the contactors

Only for devices with screw terminals

• ON-delay (varistor integrated)



3RT19 26-2C...

3RT10 2, 3RT10 3, 3RT10 4, 3RT13 ²⁾ 3RT15	24 ... 66 AC/DC	0.05 ... 1	D	3RT19 26-2CG11		1	1 unit	101	0.050
		0.5 ... 10	B	3RT19 26-2CG21		1	1 unit	101	0.050
		5 ... 100	D	3RT19 26-2CG31		1	1 unit	101	0.050
3RT19 26-2C...	90 ... 240 AC/DC	0.05 ... 1	▶	3RT19 26-2CH11		1	1 unit	101	0.050
		0.5 ... 10	▶	3RT19 26-2CH21		1	1 unit	101	0.050
		5 ... 100	▶	3RT19 26-2CH31		1	1 unit	101	0.050

• OFF-delay with auxiliary voltage (varistor integrated)



3RT19 26-2D...

3RT10 2, 3RT10 3, 3RT10 4, 3RT13 ²⁾ 3RT15	24 ... 66 AC/DC	0.05 ... 1	D	3RT19 26-2DG11		1	1 unit	101	0.050
		0.5 ... 10	D	3RT19 26-2DG21		1	1 unit	101	0.050
		5 ... 100	D	3RT19 26-2DG31		1	1 unit	101	0.050
3RT19 26-2D...	90 ... 240 AC/DC	0.05 ... 1	C	3RT19 26-2DH11		1	1 unit	101	0.050
		0.5 ... 10	D	3RT19 26-2DH21		1	1 unit	101	0.050
		5 ... 100	C	3RT19 26-2DH31		1	1 unit	101	0.050

OFF-delay devices



3RT19 16-2B.01

3RT1. 1, 3RT1. 2, 3RH1. ...-1BF40	110 AC/DC		D	3RT19 16-2BK01		1	1 unit	101	0.150		
		3RT1. 1, 3RT1. 2, 3RH1. ...-1BM40	220/230 AC/DC		D	3RT19 16-2BL01		1	1 unit	101	0.150
				3RT1. 1 ... 3RT1. 4, 3RH1. ...-1BB40	24 DC	▶	3RT19 16-2BE01		1	1 unit	101

Pneumatic delay blocks, terminal designation according to EN 50005



3RT19 26-2P...

3RT1. 2 For mounting onto the front side of size S0 contactors³⁾⁴⁾

Auxiliary contacts 1 NO and 1 NC

• ON-delay

0.1 ... 30	C	3RT19 26-2PA01		1	1 unit	101	0.080
1 ... 60	C	3RT19 26-2PA11		1	1 unit	101	0.080

• OFF-delay

0.1 ... 30	C	3RT19 26-2PR01		1	1 unit	101	0.080
1 ... 60	C	3RT19 26-2PR11		1	1 unit	101	0.080

Mechanical latching blocks

Sizes S0 and S2



3RT19 26-3A.31

For mounting on 1 contactor, contactor remains in the energized state even after a voltage failure

3RT1. 2, 3RT1. 3	24 AC/DC 110 AC/DC 230 AC/DC	A	3RT19 26-3AB31		1	1 unit	101	0.130
		B	3RT19 26-3AF31		1	1 unit	101	0.130
		B	3RT19 26-3AP31		1	1 unit	101	0.130

¹⁾ Cannot be fitted onto coupling relays.

²⁾ Not to be used for 3RT10 4. and 3RT13 4. contactors with $U_s \leq 42$ V.

³⁾ In addition to these, no other auxiliary contacts are permitted.

⁴⁾ Versions according to DIN VDE 0116 on request.

Accessories and Spare Parts

For 3RT, 3RH Contactors and Contactor Relays

Accessories for 3RT, 3RH contactors and contactor relays

For contactors	Version	Rated control supply voltage U_s 1)		DT	Order No. 2)	Price per PU	PU (UNIT, SET, M)	PS*	PG	Weight per PU approx.
		AC operation	DC operation							
Type		V AC	V DC							kg

Surge suppressors without LED (also for Cage Clamp terminals)

Size S00



3RT19 16-1DG00

For plugging onto the front side of the contactors with and without auxiliary switch blocks

3RT1.., 3RH1	Varistors	24 ... 48	24 ... 70	▶	3RT19 16-1BB00	1	1 unit	101	0.010
		48 ... 127	70 ... 150	▶	3RT19 16-1BC00	1	1 unit	101	0.010
		127 ... 240	150 ... 250	A	3RT19 16-1BD00	1	1 unit	101	0.010
		240 ... 400	--	▶	3RT19 16-1BE00	1	1 unit	101	0.010
		400 ... 600	--	A	3RT19 16-1BF00	1	1 unit	101	0.010
3RT1.., 3RH1	RC elements	24 ... 48	24 ... 70	▶	3RT19 16-1CB00	1	1 unit	101	0.010
		48 ... 127	70 ... 150	▶	3RT19 16-1CC00	1	1 unit	101	0.010
		127 ... 240	150 ... 250	▶	3RT19 16-1CD00	1	1 unit	101	0.010
		240 ... 400	--	▶	3RT19 16-1CE00	1	1 unit	101	0.010
		400 ... 600	--	▶	3RT19 16-1CF00	1	1 unit	101	0.010
3RT1.., 3RH1	Noise suppression diodes	--	12 ... 250	▶	3RT19 16-1DG00	1	1 unit	101	0.010
3RT1.., 3RH1	Diode assemblies (diode and Zener diode) for DC operation	--	12 ... 250	▶	3RT19 16-1EH00	1	1 unit	101	0.010

Size S0



3RT19 26-1B.00

For fitting onto the coil terminals at top or bottom

3RT1. 2	Varistors	24 ... 48	24 ... 70	▶	3RT19 26-1BB00	1	1 unit	101	0.025	
		48 ... 127	70 ... 150	▶	3RT19 26-1BC00	1	1 unit	101	0.025	
		127 ... 240	150 ... 250	▶	3RT19 26-1BD00	1	1 unit	101	0.025	
		240 ... 400	--	▶	3RT19 26-1BE00	1	1 unit	101	0.025	
		400 ... 600	--	B	3RT19 26-1BF00	1	1 unit	101	0.025	
3RT1. 2	RC elements	24 ... 48	24 ... 70	▶	3RT19 26-1CB00	1	1 unit	101	0.025	
		48 ... 127	70 ... 150	▶	3RT19 26-1CC00	1	1 unit	101	0.025	
		127 ... 240	150 ... 250	▶	3RT19 26-1CD00	1	1 unit	101	0.025	
		240 ... 400	--	▶	3RT19 26-1CE00	1	1 unit	101	0.025	
		400 ... 600	--	B	3RT19 26-1CF00	1	1 unit	101	0.025	
3RT1. 2	Diode assemblies For DC operation									
		• Connectable at the top (e. g. for contactor with overload relay)	--	24	▶	3RT19 26-1ER00	1	1 unit	101	0.025
			--	30 ... 250	▶	3RT19 26-1ES00	1	1 unit	101	0.025
		• Connectable at the bottom (e. g. for fuseless load feeders)	--	24	▶	3RT19 26-1TR00	1	1 unit	101	0.025
			--	30 ... 250	A	3RT19 26-1TS00	1	1 unit	101	0.025

1) Can be used for AC operation for 50/60 Hz. Please inquire about further voltages.

2) For packs of 10 units, the Order No. must be supplemented with "-Z" and the order code "X90".

Accessories and Spare Parts

For 3RT, 3RH Contactors and Contactor Relays

Accessories for 3RT, 3RH contactors and contactor relays

For contactors	Version	Rated control supply voltage $U_s^{1)}$		DT	Order No. ²⁾	Price per PU	PU (UNIT, SET, M)	PS*	PG	Weight per PU approx.
		AC operation	DC operation							
Type		V AC	V DC							kg

Surge suppressors without LED (also for Cage Clamp terminals)

Sizes S2 and S3

For fitting onto the coil terminals at top or bottom



3RT19 26-1B.00

3RT1. 3, 3RT1. 4	Varistors	24 ... 48	24 ... 70	▶	3RT19 26-1BB00		1	1 unit	101	0.025
		48 ... 127	70 ... 150	▶	3RT19 26-1BC00		1	1 unit	101	0.025
		127 ... 240	150 ... 250	▶	3RT19 26-1BD00		1	1 unit	101	0.025
		240 ... 400	--	▶	3RT19 26-1BE00		1	1 unit	101	0.025
		400 ... 600	--	▶	3RT19 26-1BF00		1	1 unit	101	0.025



3RT19 36-1C.00

3RT1. 3 ³⁾ , 3RT1. 4	RC elements	24 ... 48	24 ... 70	▶	3RT19 36-1CB00		1	1 unit	101	0.040
		48 ... 127	70 ... 150	▶	3RT19 36-1CC00		1	1 unit	101	0.040
		127 ... 240	150 ... 250	▶	3RT19 36-1CD00		1	1 unit	101	0.040
		240 ... 400	--	▶	3RT19 36-1CE00		1	1 unit	101	0.040
		400 ... 600	--	▶	3RT19 36-1CF00		1	1 unit	101	0.040

Diode assemblies

For DC operation

- Connectable at the top (e. g. for contactor with overload relay)

24	▶	3RT19 36-1ER00		1	1 unit	101	0.025
30 ... 250	▶	3RT19 36-1ES00		1	1 unit	101	0.025

- Connectable at the bottom (e. g. for fuseless load feeders)

24	▶	3RT19 36-1TR00		1	1 unit	101	0.025
30 ... 250	▶	3RT19 36-1TS00		1	1 unit	101	0.025

Sizes S6 ... S12

For connecting to withdrawable coil with screw terminals with contactors with

- 3RT1. ...A... conventional operating mechanism
- 3RT1. ...N... conventional operating mechanism



3RT19 56-1C.00

3RT1. 5, 3RT1. 6, 3RT1. 7	RC elements	24 ... 48	24 ... 70	▶	3RT19 56-1CB00		1	1 unit	101	0.035
		48 ... 127	70 ... 150	▶	3RT19 56-1CC00		1	1 unit	101	0.035
		127 ... 240	150 ... 250	▶	3RT19 56-1CD00		1	1 unit	101	0.035
		240 ... 400	--	▶	3RT19 56-1CE00		1	1 unit	101	0.035
		400 ... 600	--	▶	3RT19 56-1CF00		1	1 unit	101	0.035

1) Can be used for AC operation for 50/60 Hz. Please inquire about further voltages.

2) For packs of 10 or 5 units "-Z" and order code "X90" must be added to the Order No.

3) Mountable only at the top for 3RT1. 3/AC operating mechanism.

For contactors	Version	Rated control supply voltage $U_s^{1)}$		Power consumption of LED at U_s	DT	Order No. ²⁾	Price per PU	PU (UNIT, SET, M)	PS*	PG	Weight per PU approx.
		AC operation	DC operation								
Type		V AC	V DC								kg

Surge suppressors with LED (also for Cage Clamp terminals)

Size S00

For plugging onto the front side of the contactors with and without auxiliary switch blocks



3RT19 16-1L.00

3RT1, 3RH1.	Varistors	24 ... 48	12 ... 24	10 ... 120	▶	3RT19 16-1JJ00		1	1 unit	101	0.010
		48 ... 127	24 ... 70	20 ... 470	▶	3RT19 16-1JK00		1	1 unit	101	0.010
		127 ... 240	70 ... 150	50 ... 700	▶	3RT19 16-1JL00		1	1 unit	101	0.010
		--	150 ... 250	160 ... 950	▶	3RT19 16-1JP00		1	1 unit	101	0.010
3RT1, 3RH1.	Noise suppression diodes	--	24 ... 70	20 ... 470	▶	3RT19 16-1LM00		1	1 unit	101	0.010
		--	50 ... 150	50 ... 700	▶	3RT19 16-1LN00		1	1 unit	101	0.010
		--	150 ... 250	160 ... 950	▶	3RT19 16-1LP00		1	1 unit	101	0.010


1) Can be used for AC operation for 50/60 Hz. Please inquire about further voltages.

2) For packs of 10 or 5 units "-Z" and order code "X90" must be added to the Order No.

Accessories and Spare Parts

For 3RT, 3RH Contactors and Contactor Relays

Accessories for 3RT, 3RH contactors and contactor relays

For contactors	Version	DT	Order No.	Price per PU	PU (UNIT, SET, M)	PS*	PG	Weight per PU approx. kg	
EMC suppression modules; 3-phase ≤ 5.5 kW									
<i>Size S00 (for contactors with AC or DC operation)¹⁾</i>									
	3RT10 1	RC elements (3 x 220 Ω/0.22 μF) Up to 400 V Up to 575 V Up to 690 V	▶	3RT19 16-1PA1		1	1 unit	101	0.080
			A	3RT19 16-1PA2		1	1 unit	101	0.080
			C	3RT19 16-1PA3		1	1 unit	101	0.080
	3RT10 1	Varistors Up to 400 V Up to 575 V Up to 690 V	A	3RT19 16-1PB1		1	1 unit	101	0.090
			B	3RT19 16-1PB2		1	1 unit	101	0.090
			D	3RT19 16-1PB3		1	1 unit	101	0.090

3RT19 16-1PA.

Main current path surge suppression modules for 3RT12 vacuum contactors


Size S10 and S12

3RT12	Rated operational voltage $U_e = 690$ V AC	C	3RT19 66-1PV3		1	1 unit	101	0.400
	Rated operational voltage $U_e = 1000$ V AC For damping overvoltages and protecting motor windings against multiple re-ignition when switching off induction motors. For connection on the contactor feeder side (2-T1/4-T2/6-T3). For separate installation.	C	3RT19 66-1PV4		1	1 unit	101	0.780

Additional load modules

Size S00 (also for Cage Clamp terminals)

For plugging onto the front side of the contactors with and without auxiliary switch blocks²⁾

	3RT1. 1, 3RH1.	For increasing the permissible residual current and for limiting the residual voltage. Ensures safe opening of contactors with direct control via 230 V AC semiconductor outputs of SIMATIC controllers. Also performs the function of an overvoltage damping circuit. Rated voltage: 50/60 Hz, 180 V to 255 V AC. Operating range: 0.8 to 1.1 x U_s	▶	3RT19 16-1GA00		1	1 unit	101	0.010

3RT19 16-1GA00

Control kits

Size S00

	3RT1. 1, 3RH1.	For manual operation of the contactor contacts for start-up and service ³⁾	A	3RK1 903-0CA00		1	1 unit	121	0.015

3RK1 903-0CA00

¹⁾ See also description on page 3/98.

²⁾ For packs of 10 units, the Order No. must be supplemented with "-Z" and the order code "X90".

³⁾ See "Load Feeders, Motor Starters and Soft Starters --> ET 200S Motor Starters, 3RK1 903-0CA00".

Accessories and Spare Parts

For 3RT, 3RH Contactors and Contactor Relays

Accessories for 3RT, 3RH contactors and contactor relays

For contactors	Version	DT	Order No.	Price per PU	PU (UNIT, SET, M)	PS*	PG	Weight per PU approx. kg
----------------	---------	----	-----------	--------------	-------------------	-----	----	--------------------------

Coupling links for control by PLC

Sizes S0 ... S3

For mounting onto the coil terminals of the contactors



3RH19 24-1GP11

3RT1 . 2, 3RT1 . 3, 3RT1 . 4
 Operating range 17 to 30 V DC
 Power consumption: 0.5 W at 24 V DC
 Permissible residual current of the electronics (for 0 signal): 2.5 mA
 Rated operational current I_e :
 AC-15/AC-14 at 230 V: 3 A, DC-13 at 230 V: 0.1 A
 With LED for indicating switching state.
 With integrated varistor for damping opening surges.

▶ **3RH19 24-1GP11** 1 1 unit 101 0.060

LED modules for indicating the contactor function (also for Cage Clamp terminals)

Sizes S0 ... S12¹⁾



3RT19 26-1QT00 mounted to contactor

3RT1 . 2, 3RT1 . 3, 3RT1 . 4
 For snapping into the location hole of an inscription label on the front of a contactor either directly on the contactor or on the front auxiliary switch.
 The LED module is connected to coil terminals A1 and A2 of the contactor and indicates its energized state. Yellow LED.
 Rated voltage: 24 to 240 V AC/DC, polarized.
 (1 pack = 5 units)

B **3RT19 26-1QT00** 1 5 units 101 0.010

Auxiliary terminals, 3-pole

Size S3



3RT19 46-4F

3RT10 4. For connection of auxiliary and control cables (0.5 to 2.5 mm²) to the main conductor connections (for one side)

B **3RT19 46-4F** 1 1 unit 101 0.035

Solder pin adapters for contactors

Size S00



3RT19 16-4KA1

3RT1 . 1, 3RH11 Assembly kit for soldering contactors onto a printed circuit board.
 For 1 contactor, 1 set is required.

A **3RT19 16-4KA1** 1 4 units 101 0.030

Connection modules for contactors with screw terminals

Size S00, S0



3RT19 26-4RD01

3RT1 . 1, 3RT1 . 2, 3RH1. **Adapters for contactors**
 Ambient temperature $T_{u \text{ max.}} = 60 \text{ }^\circ\text{C}$
 Size S00, rated operational current I_e at AC-3/400 V: 20 A
 Size S0, rated operational current I_e at AC-3/400 V: 25 A

Screw terminals

B **3RT19 16-4RD01** 1 1 unit 101 0.020

B **3RT19 26-4RD01** 1 1 unit 101 0.200



3RT19 00-4RE01

Plugs for contactors
 Size S00, S0

B **3RT19 00-4RE01** 1 1 unit 101 0.025

¹⁾ For sizes S6 ... S12 the connecting leads have to be extended.

Accessories and Spare Parts

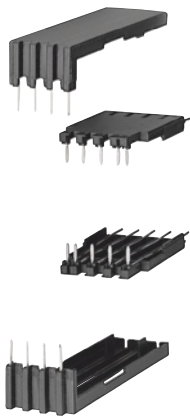
For 3RT, 3RH Contactors and Contactor Relays

Accessories for 3RT, 3RH contactors and contactor relays

For contactors	Version	DT	Order No.	Price per PU	PU (UNIT, SET, M)	PS*	PG	Weight per PU approx. kg
----------------	---------	----	-----------	--------------	-------------------	-----	----	--------------------------

Solder pin adapters for contactors with mounted 4-pole auxiliary switch block

Size S00



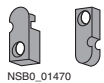
3RT19 16-4KA2

3RT1. 1, 3RH11 Assembly kit for soldering contactors B with an auxiliary switch block onto a printed circuit board. For 1 contactor, 1 set is required.

3RT19 16-4KA2 1 4 units 101 0.070

Screw adapters with screw or Cage Clamp terminals

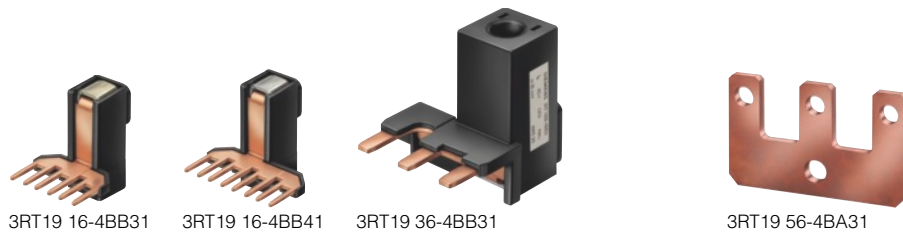
Size S0



3RT19 26-4P

3RT1. 2 Screw adapters for easy screw fixing C 2 units required per contactor (1 pack contains 10 sets for 10 contactors)

3RT19 26-4P 1 10 units 101 0.010



3RT19 16-4BB31

3RT19 16-4BB41

3RT19 36-4BB31

3RT19 56-4BA31

Size	For contactors	Max. conductor cross-sections	DT	Order No.	Price per PU	PU (UNIT, SET, M)	PS*	PG	Weight per PU approx. kg
------	----------------	-------------------------------	----	-----------	--------------	-------------------	-----	----	--------------------------

Type mm²

Links for paralleling

3-pole, with connection terminal ¹⁾²⁾									
S00	3RT10 1	25	▶	3RT19 16-4BB31		1	1 unit	101	0.015
S0	3RT10 2	35, stranded	▶	3RT19 26-4BB31		1	1 unit	101	0.020
S2	3RT10 3	95	▶	3RT19 36-4BB31		1	1 unit	101	0.100
3-pole, with through-hole (star jumpers) ¹⁾²⁾									
S3	3RT10 4 3RT14 4	185	▶	3RT19 46-4BB31		1	1 unit	101	0.200
S6	3RT1. 5	--	▶	3RT19 56-4BA31		1	1 unit	101	0.160
S10/S12	3RT1. 6, 3RT1. 7	--	▶	3RT19 66-4BA31		1	1 unit	101	0.500
4-pole, with connection terminal ¹⁾²⁾									
S00	3RT1. 1	25	C	3RT19 16-4BB41		1	1 unit	101	0.015


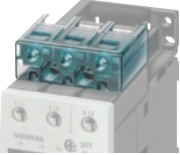

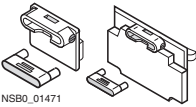
¹⁾ The links for paralleling can be reduced by one pole.

²⁾ Sizes S00 to S2: The links for paralleling are insulated.
Size S3: A cover plate is included for touch protection.
(Can only be used when the box terminal is removed.)
Sizes S6 to S12: The 3RT19 56-4EA1 (for S6) or 3RT19 66-4EA1 (for S10 and S12) cover can be used for touch protection.

Accessories and Spare Parts

For 3RT, 3RH Contactors and Contactor Relays

Accessories for 3RT, 3RH contactors and contactor relays

For contactors	Version		DT	Order No.	Price per PU	PU (UNIT, SET, M)	PS*	PG	Weight per PU approx. kg	
	Size	Type								
Box terminal blocks										
	S6	3RT1. 5 (3RB20 5)	For round and ribbon cables¹⁾							
			Up to 70 mm ² 2)	▶	3RT19 55-4G	1	1 unit	101	0.230	
			Up to 120 mm ²	▶	3RT19 56-4G	1	1 unit	101	0.260	
			Auxiliary conductor connection for box terminals	B	3TX7 500-0A	1	1 unit	101	0.010	
S10/S12	3RT1. 6, 3RT1. 7 (3RB20 6, 3RB21 6)	Up to 240 mm ² With auxiliary conductor connection	▶	3RT19 66-4G	1	1 unit	101	0.676		
Covers										
	S2	3RT10 3 3RT13 3, 3RT15 3	Terminal covers for box terminals							
			Additional touch protection to be fitted at the box terminals (2 units required per contactor)		B	3RT19 36-4EA2	1	1 unit	101	0.020
			4-pole contactors			3RT19 36-4EA4	1	1 unit	101	0.020
					▶	3RT19 46-4EA2	1	1 unit	101	0.025
					B	3RT19 46-4EA4	1	1 unit	101	0.025
	S6	3RT1. 5	Length: 25 mm	▶	3RT19 56-4EA2	1	1 unit	101	0.030	
	S10/S12	3RT1. 6, 3RT1. 7	Length: 30 mm	▶	3RT19 66-4EA2	1	1 unit	101	0.040	
	S3	3RT10 4, 3RT14 4 3RT13 4	Terminal covers for cable lugs and busbar connection³⁾							
			For complying with the voltage clearances and as touch protection if box terminal is removed ⁴⁾ (2 units required per contactor)		▶	3RT19 46-4EA1	1	1 unit	101	0.040
S6	3RT1. 5	Length: 100 mm	▶	3RT19 56-4EA1	1	1 unit	101	0.070		
S10/S12	3RT1. 6, 3RT1. 7	Length: 120 mm	▶	3RT19 66-4EA1	1	1 unit	101	0.130		
S6	3RT1. 5	For busbar cover between contactor and 3RB2. overload relay or wiring module for contactor assemblies		▶	3RT19 56-4EA3	1	1 unit	101	0.020	
		Length: 27 mm	▶	3RT19 66-4EA3	1	1 unit	101	0.060		
		Length: 42 mm								
S10/S12⁵⁾	3RT1. 6, 3RT1. 7	Length: 27 mm	▶	3RT19 56-4EA3	1	1 unit	101	0.020		
S6	3RT1. 5	Length: 38 mm	▶	3RT19 56-4EA4	1	1 unit	101	0.030		
Sealable covers										
	S00	3RT1. 1, 3RH1. 6)	Sealable cover for preventing manual operation	A	3RT19 16-4MA10	1	5 units	101	0.010	
	S0 ... S12	3RT1. 2 ... 3RT1. 7 6)	1 unit required per contactor	B	3RT19 26-4MA10	1	5 units	101	0.010	

¹⁾ For connectable cross-sections of the contactors see Technical Information LV 1 T -> "Technical specifications".

²⁾ As standard for 3RT10 54-1 contactor (55 kW).

³⁾ Also fits on contactors S6 ... S12 with box terminals.

⁴⁾ Observe the note in Technical Information LV 1 T, "Technical specifications", "Conductor Cross-Sections".



⁵⁾ The 3RT19 66-4EA3 cover is required in addition for use in contactor assemblies (reversing/wye-delta).

⁶⁾ Exception: contactors and contactor relays auxiliary switch block mounted onto the front.

Accessories and Spare Parts

For 3RT, 3RH Contactors and Contactor Relays

Accessories for 3RT, 3RH contactors and contactor relays

Version	DT	Order No.	Price per PU	PU (UNIT, SET, M)	PS*	PG	Weight per PU approx. kg
Insulation stop for securely holding back the conductor insulation on conductors up to 1 mm² for contactors with Cage Clamp terminals							
		3RT19 16-4JA02		100	20 unit	101	1000.000
3RT19 16-4JA02	B	Insulation stop strip can be inserted in cable entry of Cage Clamp (2 strips per contactor required, can be removed in pairs) Fits into cable entries of all SIRIUS devices with Cage Clamp terminals of conductor cross-section up to 2.5 mm ² .					
Tools for opening Cage Clamp terminals							
		8WA2 880		1	1 unit	041	0.034
8WA2 880	C	For all SIRIUS devices with Cage Clamp terminals, up to max. 2.5 mm ² conductor cross-section (not suitable for devices with removable terminal) Length: approx. 175 mm; 3.5 x 0.5, green; partially insulated					
	C	8WA2 803	Length: approx. 175 mm; 3.5 x 0.5; green	1	1 unit	041	0.024
Blank labels							
		Unit labeling plates for "SIRIUS"					
	D	3RT19 00-1SB10	• 10 mm x 7 mm, pastel turquoise	100	816 units	101	24.000
	C	3RT19 00-1SB20	• 20 mm x 7 mm, pastel turquoise	100	340 units	101	0.200
		Labels for sticking for "SIRIUS"					
3RT19 00-1SB10	D	3RT19 00-1SB60	• 19 mm x 6 mm, pastel turquoise	100	3060 units	101	15.000
	C	3RT19 00-1SD60	• 19 mm x 6 mm, zinc/yellow	100	3060 units	101	12.000
		<u>Computer labeling system</u> For individual inscription of unit labeling plates		Obtainable from: murrplastik Systemtechnik GmbH			

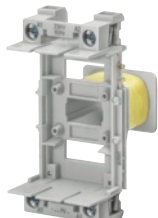
Accessories and Spare Parts

For 3RT, 3RH Contactors and Contactor Relays

Spare parts for 3RT, 3RH
contactors and contactor relays

Selection and ordering data

PU (UNIT, SET, M) = 1
PS* = 1 unit
PG = 101



3RT19 24-5A.01



3RT19 34-5A.01



3RT19 24-5A.02

For contactors		Rated control supply voltage U_s			DT	Screw terminals	⊕	Weight per PU approx.	DT	Cage Clamp terminals	⊗	Weight per PU approx.	
Size	Type	50 Hz V	50/60 Hz V	60 Hz V		Order No.	Price per PU	kg		Order No.	Price per PU	kg	
Solenoid coils · AC operation													
S0	3RT10 2.,	24	--	--	▶	3RT19 24-5AB01		0.100 B		3RT19 24-5AB02		0.100	
	3RT13 2.,	42	--	--	B	3RT19 24-5AD01		0.100 C		3RT19 24-5AD02		0.100	
	3RT15 2.	48	--	--	--	A	3RT19 24-5AH01		0.100 B		3RT19 24-5AH02		0.100
		110	--	--	--	▶	3RT19 24-5AF01		0.100 B		3RT19 24-5AF02		0.100
		230	--	--	▶	3RT19 24-5AP01		0.100 B		3RT19 24-5AP02		0.100	
		400	--	--	▶	3RT19 24-5AV01		0.100 C		3RT19 24-5AV02		0.100	
		--	24	--	--	▶	3RT19 24-5AC21		0.100 B		3RT19 24-5AC22		0.100
		--	42	--	--	B	3RT19 24-5AD21		0.100 C		3RT19 24-5AD22		0.100
		--	48	--	--	B	3RT19 24-5AH21		0.100 C		3RT19 24-5AH22		0.100
		--	110	--	--	▶	3RT19 24-5AG21		0.100 B		3RT19 24-5AG22		0.100
		--	220	--	--	B	3RT19 24-5AN21		0.100 B		3RT19 24-5AN22		0.100
		--	230	--	--	B	3RT19 24-5AL21		0.100 B		3RT19 24-5AL22		0.100
		110	--	120	B	3RT19 24-5AK61		0.100 B		3RT19 24-5AK62		0.100	
		220	--	240	B	3RT19 24-5AP61		0.100 C		3RT19 24-5AP62		0.100	
		--	100	110	B	3RT19 24-5AG61		0.100 C		3RT19 24-5AG62		0.100	
		--	200	220	B	3RT19 24-5AN61		0.100 C		3RT19 24-5AN62		0.100	
		--	400	440	B	3RT19 24-5AR61		0.100 C		3RT19 24-5AR62		0.100	
	S2	3RT10 34	24	--	--	B	3RT19 34-5AB01		0.120 B		3RT19 34-5AB02		0.120
			42	--	--	B	3RT19 34-5AD01		0.120 B		3RT19 34-5AD02		0.120
			48	--	--	B	3RT19 34-5AH01		0.120 B		3RT19 34-5AH02		0.120
			110	--	--	B	3RT19 34-5AF01		0.120 B		3RT19 34-5AF02		0.120
			230	--	--	A	3RT19 34-5AP01		0.120 B		3RT19 34-5AP02		0.120
			400	--	--	C	3RT19 34-5AV01		0.120 B		3RT19 34-5AV02		0.120
			--	24	--	B	3RT19 34-5AC21		0.120 B		3RT19 34-5AC22		0.120
		--	42	--	B	3RT19 34-5AD21		0.120 B		3RT19 34-5AD22		0.120	
		--	48	--	B	3RT19 34-5AH21		0.120 B		3RT19 34-5AH22		0.120	
		--	110	--	C	3RT19 34-5AG21		0.120 B		3RT19 34-5AG22		0.120	
		--	220	--	C	3RT19 34-5AN21		0.120 B		3RT19 34-5AN22		0.120	
		--	230	--	C	3RT19 34-5AL21		0.120 B		3RT19 34-5AL22		0.120	
		110	--	120	B	3RT19 34-5AK61		0.120 B		3RT19 34-5AK62		0.120	
		220	--	240	B	3RT19 34-5AP61		0.120 B		3RT19 34-5AP62		0.120	
		--	100	110	B	3RT19 34-5AG61		0.120 B		3RT19 34-5AG62		0.120	
		--	200	220	B	3RT19 34-5AN61		0.120 B		3RT19 34-5AN62		0.120	
		--	400	440	B	3RT19 34-5AR61		0.120 B		3RT19 34-5AR62		0.120	
		3RT10 35,	24	--	--	B	3RT19 35-5AB01		0.120 B		3RT19 35-5AB02		0.120
		3RT10 36,	42	--	--	B	3RT19 35-5AD01		0.120 B		3RT19 35-5AD02		0.120
		3RT13 3.,	48	--	--	B	3RT19 35-5AH01		0.120 B		3RT19 35-5AH02		0.120
		3RT15 3.	110	--	--	▶	3RT19 35-5AF01		0.120 B		3RT19 35-5AF02		0.120
			230	--	--	▶	3RT19 35-5AP01		0.120 B		3RT19 35-5AP02		0.120
		400	--	--	C	3RT19 35-5AV01		0.120 B		3RT19 35-5AV02		0.120	
		--	24	--	--	B	3RT19 35-5AC21		0.120 B		3RT19 35-5AC22		0.120
		--	42	--	--	B	3RT19 35-5AD21		0.120 B		3RT19 35-5AD22		0.120
		--	48	--	--	B	3RT19 35-5AH21		0.120 B		3RT19 35-5AH22		0.120
		--	110	--	--	B	3RT19 35-5AG21		0.120 B		3RT19 35-5AG22		0.120
		--	220	--	--	B	3RT19 35-5AN21		0.120 B		3RT19 35-5AN22		0.120
		--	230	--	--	B	3RT19 35-5AL21		0.120 B		3RT19 35-5AL22		0.120
		110	--	120	B	3RT19 35-5AK61		0.120 B		3RT19 35-5AK62		0.120	
		220	--	240	B	3RT19 35-5AP61		0.120 B		3RT19 35-5AP62		0.120	
		--	100	110	B	3RT19 35-5AG61		0.120 B		3RT19 35-5AG62		0.120	
		--	200	220	B	3RT19 35-5AN61		0.120 B		3RT19 35-5AN62		0.120	
		--	400	440	C	3RT19 35-5AR61		0.120 B		3RT19 35-5AR62		0.120	

* You can order this quantity or a multiple thereof.

Accessories and Spare Parts

For 3RT, 3RH Contactors and Contactor Relays

Spare parts for 3RT, 3RH
contactors and contactor relays

PU (UNIT, SET, M) = 1
PS* = 1 unit
PG = 101



3RT19 44-5A.01



3RT19 45-5A.01



3RT19 45-5A.02



3RT19 44-5B.42

For contactors		Rated control supply voltage U_s				DT	Screw terminals	⊕	Weight per PU approx.	DT	Cage Clamp terminals	⊖	Weight per PU approx.
Size	Type	AC			DC	Order No.	Price per PU	kg	Order No.	Price per PU	kg		
		50 Hz	50/60 Hz	60 Hz	V								
Solenoid coils · AC operation													
S3	3RT10 44	24	--	--	--	B	3RT19 44-5AB01	0.190 B	3RT19 44-5AB02	0.190			
		42	--	--	--	B	3RT19 44-5AD01	0.190 B	3RT19 44-5AD02	0.190			
		48	--	--	--	B	3RT19 44-5AH01	0.190 B	3RT19 44-5AH02	0.190			
		110	--	--	--	B	3RT19 44-5AF01	0.190 B	3RT19 44-5AF02	0.190			
		230	--	--	--	B	3RT19 44-5AP01	0.190 B	3RT19 44-5AP02	0.190			
		400	--	--	--	B	3RT19 44-5AV01	0.190 B	3RT19 44-5AV02	0.190			
		--	24	--	--	B	3RT19 44-5AC21	0.190 B	3RT19 44-5AC22	0.190			
		--	42	--	--	B	3RT19 44-5AD21	0.190 B	3RT19 44-5AD22	0.190			
		--	48	--	--	B	3RT19 44-5AH21	0.190 B	3RT19 44-5AH22	0.190			
		--	110	--	--	B	3RT19 44-5AG21	0.190 B	3RT19 44-5AG22	0.190			
		--	220	--	--	B	3RT19 44-5AN21	0.190 B	3RT19 44-5AN22	0.190			
		--	230	--	--	B	3RT19 44-5AL21	0.190 B	3RT19 44-5AL22	0.190			
	--	110	--	120	--	C	3RT19 44-5AK61	0.190 B	3RT19 44-5AK62	0.190			
	--	220	--	240	--	B	3RT19 44-5AP61	0.190 B	3RT19 44-5AP62	0.190			
	--	100	110	--	B	3RT19 44-5AG61	0.190 B	3RT19 44-5AG62	0.190				
	--	200	220	--	B	3RT19 44-5AN61	0.190 B	3RT19 44-5AN62	0.190				
	--	400	440	--	B	3RT19 44-5AR61	0.190 B	3RT19 44-5AR62	0.190				
	3RT10 45, 3RT10 46, 3RT13 4., 3RT14 46, 3RT15 4.	24	--	--	--	B	3RT19 45-5AB01	0.190 B	3RT19 45-5AB02	0.190			
		42	--	--	--	B	3RT19 45-5AD01	0.190 B	3RT19 45-5AD02	0.190			
		48	--	--	--	B	3RT19 45-5AH01	0.190 B	3RT19 45-5AH02	0.190			
		110	--	--	--	B	3RT19 45-5AF01	0.190 B	3RT19 45-5AF02	0.190			
		230	--	--	--	▶	3RT19 45-5AP01	0.190 B	3RT19 45-5AP02	0.190			
		400	--	--	--	C	3RT19 45-5AV01	0.190 B	3RT19 45-5AV02	0.190			
		--	24	--	--	B	3RT19 45-5AC21	0.190 B	3RT19 45-5AC22	0.190			
--		42	--	--	B	3RT19 45-5AD21	0.190 B	3RT19 45-5AD22	0.190				
--		48	--	--	B	3RT19 45-5AH21	0.190 B	3RT19 45-5AH22	0.190				
--		110	--	--	B	3RT19 45-5AG21	0.190 B	3RT19 45-5AG22	0.190				
--		220	--	--	B	3RT19 45-5AN21	0.190 B	3RT19 45-5AN22	0.190				
--		230	--	--	B	3RT19 45-5AL21	0.190 B	3RT19 45-5AL22	0.190				
110 220 100 200 400	--	120	--	B	3RT19 45-5AK61	0.190 B	3RT19 45-5AK62	0.190					
	--	240	--	B	3RT19 45-5AP61	0.190 B	3RT19 45-5AP62	0.190					
	--	110	--	B	3RT19 45-5AG61	0.190 B	3RT19 45-5AG62	0.190					
	--	220	--	C	3RT19 45-5AN61	0.190 B	3RT19 45-5AN62	0.190					
	--	440	--	B	3RT19 45-5AR61	0.190 B	3RT19 45-5AR62	0.190					
Solenoid coils · DC operation													
S2	3RT10 3., 3RT13 3., 3RT15 3.	--	--	--	24	B	3RT19 34-5BB41	0.650 B	3RT19 34-5BB42	0.650			
		--	--	--	42	B	3RT19 34-5BD41	0.650 C	3RT19 34-5BD42	0.650			
		--	--	--	48	B	3RT19 34-5BW41	0.650 B	3RT19 34-5BW42	0.650			
		--	--	--	60	B	3RT19 34-5BE41	0.650 B	3RT19 34-5BE42	0.650			
		--	--	--	110	B	3RT19 34-5BF41	0.650 B	3RT19 34-5BF42	0.650			
		--	--	--	125	B	3RT19 34-5BG41	0.650 C	3RT19 34-5BG42	0.650			
	-- -- -- -- --	--	--	--	220	B	3RT19 34-5BM41	0.650 B	3RT19 34-5BM42	0.650			
		--	--	--	230	B	3RT19 34-5BP41	0.650 B	3RT19 34-5BP42	0.650			
		S3	3RT10 4., 3RT13 4., 3RT14 4., 3RT15 4.	--	--	--	24	B	3RT19 44-5BB41	1.000 B	3RT19 44-5BB42	1.000	
				--	--	--	42	C	3RT19 44-5BD41	1.000 B	3RT19 44-5BD42	1.000	
				--	--	--	48	B	3RT19 44-5BW41	1.000 B	3RT19 44-5BW42	1.000	
				--	--	--	60	B	3RT19 44-5BE41	1.000 B	3RT19 44-5BE42	1.000	
--	--			--	110	B	3RT19 44-5BF41	1.000 B	3RT19 44-5BF42	1.000			
--	--			--	125	B	3RT19 44-5BG41	1.000 B	3RT19 44-5BG42	1.000			
-- -- -- -- --	--		--	--	220	B	3RT19 44-5BM41	1.000 B	3RT19 44-5BM42	1.000			
	--		--	--	230	B	3RT19 44-5BP41	1.000 B	3RT19 44-5BP42	1.000			

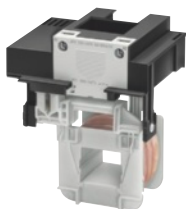
* You can order this quantity or a multiple thereof.

Accessories and Spare Parts



For 3RT, 3RH Contactors and Contactor Relays

Spare parts for 3RT, 3RH contactors and contactor relays

PU (UNIT, SET, M) = 1
 PS* = 1 unit
 PG = 101



3RT19 55-5A...

For contactors			Rated control supply voltage U_s min ... U_s max	DT	Screw terminals 	Weight per PU approx.	DT	Cage Clamp terminals 	Weight per PU approx.	
Size	Type	V AC/DC			Order No.	Price per PU	kg	Order No.	Price per PU	kg
Withdrawable coils										
<i>Conventional operating mechanism</i>										
S6	3RT10 5, 3RT14 5	23 ... 26	B	3RT19 55-5AB31	0.650 B	3RT19 55-5AB32	0.650			
		42 ... 48	B	3RT19 55-5AD31	0.650 B	3RT19 55-5AD32	0.650			
		110 ... 127	B	3RT19 55-5AF31	0.650 B	3RT19 55-5AF32	0.650			
		200 ... 220	B	3RT19 55-5AM31	0.650 B	3RT19 55-5AM32	0.650			
		220 ... 240	B	3RT19 55-5AP31	0.650 B	3RT19 55-5AP32	0.650			
		240 ... 277	B	3RT19 55-5AU31	0.650 B	3RT19 55-5AU32	0.650			
		380 ... 420	B	3RT19 55-5AV31	0.650 B	3RT19 55-5AV32	0.650			
		440 ... 480	B	3RT19 55-5AR31	0.650 B	3RT19 55-5AR32	0.650			
		500 ... 550	B	3RT19 55-5AS31	0.650 B	3RT19 55-5AS32	0.650			
		575 ... 600	B	3RT19 55-5AT31	0.650 B	3RT19 55-5AT32	0.650			
S10	3RT10 6, 3RT14 6	23 ... 26	B	3RT19 65-5AB31	0.850 B	3RT19 65-5AB32	0.850			
		42 ... 48	B	3RT19 65-5AD31	0.850 B	3RT19 65-5AD32	0.850			
		110 ... 127	B	3RT19 65-5AF31	0.850 B	3RT19 65-5AF32	0.850			
		200 ... 220	C	3RT19 65-5AM31	0.850 B	3RT19 65-5AM32	0.850			
		220 ... 240	B	3RT19 65-5AP31	0.850 B	3RT19 65-5AP32	0.850			
		240 ... 277	B	3RT19 65-5AU31	0.850 B	3RT19 65-5AU32	0.850			
		380 ... 420	B	3RT19 65-5AV31	0.850 B	3RT19 65-5AV32	0.850			
		440 ... 480	B	3RT19 65-5AR31	0.850 B	3RT19 65-5AR32	0.850			
		500 ... 550	C	3RT19 65-5AS31	0.850 B	3RT19 65-5AS32	0.850			
		575 ... 600	C	3RT19 65-5AT31	0.850 B	3RT19 65-5AT32	0.850			
S10	3RT12 6 vacuum contactors	23 ... 26	B	3RT19 66-5AB31	1.000	--				
		42 ... 48	B	3RT19 66-5AD31	1.000	--				
		110 ... 127	A	3RT19 66-5AF31	1.000	--				
		200 ... 220	C	3RT19 66-5AM31	1.000	--				
		220 ... 240	A	3RT19 66-5AP31	1.000	--				
		240 ... 277	C	3RT19 66-5AU31	1.000	--				
		380 ... 420	B	3RT19 66-5AV31	1.000	--				
		440 ... 480	C	3RT19 66-5AR31	1.000	--				
		500 ... 550	C	3RT19 66-5AS31	1.000	--				
		575 ... 600	C	3RT19 66-5AT31	1.000	--				
S12	3RT10 7, 3RT14 7, 3RT12 7 vacuum contactors	23 ... 26	B	3RT19 75-5AB31	1.300 B	3RT19 75-5AB32	1.300			
		42 ... 48	B	3RT19 75-5AD31	1.300 B	3RT19 75-5AD32	1.300			
		110 ... 127	B	3RT19 75-5AF31	1.300 B	3RT19 75-5AF32	1.300			
		200 ... 220	C	3RT19 75-5AM31	1.300 B	3RT19 75-5AM32	1.300			
		220 ... 240	B	3RT19 75-5AP31	1.300 B	3RT19 75-5AP32	1.300			
		240 ... 277	B	3RT19 75-5AU31	1.300 B	3RT19 75-5AU32	1.300			
		380 ... 420	B	3RT19 75-5AV31	1.300 B	3RT19 75-5AV32	1.300			
		440 ... 480	B	3RT19 75-5AR31	1.300 B	3RT19 75-5AR32	1.300			
		500 ... 550	C	3RT19 75-5AS31	1.300 B	3RT19 75-5AS32	1.300			
		575 ... 600	C	3RT19 75-5AT31	1.300 B	3RT19 75-5AT32	1.300			

* You can order this quantity or a multiple thereof.

Accessories and Spare Parts

For 3RT, 3RH Contactors and Contactor Relays

Spare parts for 3RT, 3RH
contactors and contactor relays

PU (UNIT, SET, M) = 1
PS* = 1 unit
PG = 101



3RT19 55-5N...

For contactors			Rated control supply voltage U_s	DT	Screw terminals	⊕	Weight per PU approx.	DT	Cage Clamp terminals	⊕	Weight per PU approx.
Size	Type	V AC/DC	Order No.	Price per PU	kg	Order No.	Price per PU	kg			

Withdrawable coils

Solid-state operating mechanisms

For 24 V DC PLC output

S6	3RT10 5,	21 ... 27.3	C	3RT19 55-5NB31	0.650 B	3RT19 55-5NB32	0.650
	3RT14 5	96 ... 127	B	3RT19 55-5NF31	0.650 B	3RT19 55-5NF32	0.650
		200 ... 277	B	3RT19 55-5NP31	0.650 B	3RT19 55-5NP32	0.650
S10	3RT10 6,	21 ... 27.3	B	3RT19 65-5NB31	0.900 B	3RT19 65-5NB32	0.900
	3RT14 6	96 ... 127	B	3RT19 65-5NF31	0.900 B	3RT19 65-5NF32	0.900
		200 ... 277	B	3RT19 65-5NP31	0.900 B	3RT19 65-5NP32	0.900
	3RT12 6	21 ... 27.3	B	3RT19 66-5NB31	0.650	--	
	vacuum contactors	96 ... 127	C	3RT19 66-5NF31	0.650	--	
		200 ... 277	C	3RT19 66-5NP31	0.650	--	
S12	3RT10 7,	21 ... 27.3	B	3RT19 75-5NB31	1.100 B	3RT19 75-5NB32	1.100
	3RT14 7,	96 ... 127	B	3RT19 75-5NF31	1.100 B	3RT19 75-5NF32	1.100
	3RT12 7	200 ... 277	B	3RT19 75-5NP31	1.100 B	3RT19 75-5NP32	1.100
	vacuum contactors						

For 24 V DC PLC output/PLC relay output, with remaining lifetime indicator (RLT)

(Withdrawable coil with lateral solid-state module)

S6	3RT10 5,	96 ... 127	B	3RT19 55-5PF31	0.650	--	
	3RT14 5	200 ... 277	B	3RT19 55-5PP31	0.650	--	
S10	3RT10 6,	96 ... 127	B	3RT19 65-5PF31	1.300	--	
	3RT14 6	200 ... 277	B	3RT19 65-5PP31	1.300	--	
S12	3RT10 7,	96 ... 127	B	3RT19 75-5PF31	1.300	--	
	3RT14 7	200 ... 277	B	3RT19 75-5PP31	1.300	--	

With AS-Interface and remaining lifetime indicator (RLT)

(Withdrawable coil with lateral solid-state module)

S6	3RT10 5,	96 ... 127	B	3RT19 55-5QF31	0.650	--	
	3RT14 5	200 ... 277	B	3RT19 55-5QP31	0.650	--	
S10	3RT10 6,	96 ... 127	B	3RT19 65-5QF31	1.300	--	
	3RT14 6	200 ... 277	B	3RT19 65-5QP31	1.300	--	
S12	3RT10 7,	96 ... 127	B	3RT19 75-5QF31	1.300	--	
	3RT14 7	200 ... 277	B	3RT19 75-5QP31	1.300	--	

Accessories and Spare Parts

For 3RT, 3RH Contactors and Contactor Relays

Spare parts for 3RT, 3RH contactors and contactor relays

For contactors		Version	DT	Order No.	Price per PU	PU (UNIT, SET, M)	PS*	PG	Weight per PU approx. kg
Size	Type								
Arc chutes									
S2	3RT10 3.	Arc chutes, 3-pole	C	3RT19 36-7A		1	1 unit	101	0.110
S3	3RT10 4., 3RT14 46		C	3RT19 46-7A		1	1 unit	101	0.300
S6	3RT10 54 3RT10 55 3RT10 56		B	3RT19 54-7A		1	1 unit	101	0.760
			B	3RT19 55-7A		1	1 unit	101	0.760
			B	3RT19 56-7A		1	1 unit	101	0.760
S10	3RT10 64 3RT10 65 3RT10 66		B	3RT19 64-7A		1	1 unit	101	1.350
			B	3RT19 65-7A		1	1 unit	101	1.350
			B	3RT19 66-7A		1	1 unit	101	1.350
S12	3RT10 75 3RT10 76		B	3RT19 75-7A		1	1 unit	101	1.650
			B	3RT19 76-7A		1	1 unit	101	1.650
S6	3RT14 56		B	3RT19 56-7B		1	1 unit	101	0.720
S10	3RT14 66		B	3RT19 66-7B		1	1 unit	101	1.350
S12	3RT14 76		B	3RT19 76-7B		1	1 unit	101	1.400
Contacts with fixing parts									
<i>For contactors with 3 main contacts</i>									
S2	3RT10 34 3RT10 35 3RT10 36	Main contacts (3 NO contacts) for utilization category AC-3 (1 set = 3 movable and 6 fixed switching elements with fixing parts)	▶	3RT19 34-6A		1	1 unit	101	0.050
			▶	3RT19 35-6A		1	1 unit	101	0.050
			▶	3RT19 36-6A		1	1 unit	101	0.050
S3	3RT10 44 3RT10 45 3RT10 46		▶	3RT19 44-6A		1	1 unit	101	0.110
			▶	3RT19 45-6A		1	1 unit	101	0.110
			▶	3RT19 46-6A		1	1 unit	101	0.110
S6	3RT10 54 3RT10 55 3RT10 56		▶	3RT19 54-6A		1	1 unit	101	0.280
			▶	3RT19 55-6A		1	1 unit	101	0.280
			▶	3RT19 56-6A		1	1 unit	101	0.280
S10	3RT10 64 3RT10 65 3RT10 66		▶	3RT19 64-6A		1	1 unit	101	0.550
			▶	3RT19 65-6A		1	1 unit	101	0.550
			▶	3RT19 66-6A		1	1 unit	101	0.550
S12	3RT10 75 3RT10 76		▶	3RT19 75-6A		1	1 unit	101	0.900
			A	3RT19 76-6A		1	1 unit	101	0.100
S3	3RT14 46	Main contacts (3 NO contacts) for utilization category AC-1 (1 set = 3 movable and 6 fixed switching elements with fixing parts)	B	3RT19 46-6D		1	1 unit	101	0.900
S6	3RT14 56		B	3RT19 56-6D		1	1 unit	101	0.280
S10	3RT14 66		B	3RT19 66-6D		1	1 unit	101	0.550
S12	3RT14 76		A	3RT19 76-6D		1	1 unit	101	0.900
<i>For 3RT12 vacuum contactors</i>									
S10	3RT12 64 3RT12 65 3RT12 66	3 vacuum interrupters with fixing parts	B	3RT19 64-6V		1	1 unit	101	1.530
			B	3RT19 65-6V		1	1 unit	101	1.530
			B	3RT19 66-6V		1	1 unit	101	1.530
S12	3RT12 75 3RT12 76		B	3RT19 75-6V		1	1 unit	101	1.780
			B	3RT19 76-6V		1	1 unit	101	1.780
<i>For contactors with 4 main contacts</i>									
S2	3RT13 36	Main contacts (4 NO contacts) for utilization category AC-1 (1 set = 4 movable and 8 fixed switching elements with fixing parts)	C	3RT19 36-6E		1	1 unit	101	0.060
S3	3RT13 44 3RT13 46		C	3RT19 44-6E		1	1 unit	101	0.150
			C	3RT19 46-6E		1	1 unit	101	0.150

* You can order this quantity or a multiple thereof.