

IEC Appliance Inlet with protection degree IP67 / IP69K, Screw-on Mounting front side, Solder or Quick-connect Terminal

**new**



with Cover (separate accessories)



Set consisting of appliance inlet and connector



See below:  
[Approvals and Compliances](#)

**Description**

- Panel mount :  
 Screw-on mounting from front side
- Appliance Inlet , Pin temperature 120 °C , Protection class I
- Solder terminals or quick connect terminals
- Complete set consisting of appliance inlet and outlet
- Mating connector type: 4762

**Unique Selling Proposition**

- Waterproofed Appliance Inlet IP67 / IP69K
- Suitable for equipments in harsh environment
- Specific shape to ensure IP protection
- Version in Black and White

**Weblinks**

[pdf datasheet](#), [html-datasheet](#), [General Product Information](#), [Distributor-Stock-Check](#), [Accessories](#), [Detailed request for product](#), [Microsite](#), [Video](#)

**Technical Data**

|                                 |  |
|---------------------------------|--|
| Ratings IEC                     | 10A / 250VAC; 50Hz   |
| Ratings UL/CSA                  | 15A / 250VAC; 60Hz   |
| Dielectric Strength             | > 1.5kVAC between L-N<br>> 1.5kVAC between L/N-PE<br>(1 min/50Hz)    |
| Allowable Operation Temperature | -25 °C to 120 °C   |
| IP-Protection                   | from front side IP67 acc. to IEC 60529 /<br>IP69K acc. to ISO 20653  |
| Insulation cover                | Suitable for appliances with protection<br>class I acc. to IEC 61140 |
| Terminal                        | Solder terminals or quick connect<br>terminals                       |
| Panel Thickness S               | Screw: max 6 mm<br>Mounting screw torque max 3Nm                     |
| Material: Housing               | Thermoplastic, black / white, UL 94V-0                               |

|                         |   |
|-------------------------|---|
| appliance inlet/-outlet | Approved acc. to IEC 60320-1,<br>UL 60320-1, CSA C22.2 no. 60320-1<br>(For hot conditions) pin-temperature 120 °C,<br>10A, Protection Class I<br>Shape of connector S16 is SCHURTER<br>specific |
|-------------------------|---|

**Approvals and Compliances**

Detailed information on product approvals, code requirements, usage instructions and detailed test conditions can be looked up in [Details about Approvals](#)




**Approvals**

The approval mark is used by the testing authorities to certify compliance with the safety requirements placed on electronic products.  
 Approval Reference Type: 4761

| Approval Logo | Certificates  | Certification Body | Description                  |
|---------------|---------------|--------------------|------------------------------|
|               | VDE Approvals | VDE                | Certificate Number: 40044311 |
|               | UL Approvals  | UL                 | UL File Number: E96454       |

**Product standards**

Product standards that are referenced

| Organization   | Design                | Standard              | Description   |
|--|-----------------------|-----------------------|---|
|  | Designed according to | IEC 60320-1           | Appliance couplers for household and similar general purposes         |
|  | Designed according to | UL 60320-1            | Standard for Attachment Plugs and Receptacles                         |
|  | Designed according to | CSA C22.2 no. 60320-1 | General Use Receptacles, Attachment Plugs, and Similar Wiring Devices |






### Application standards

Application standards where the product can be used

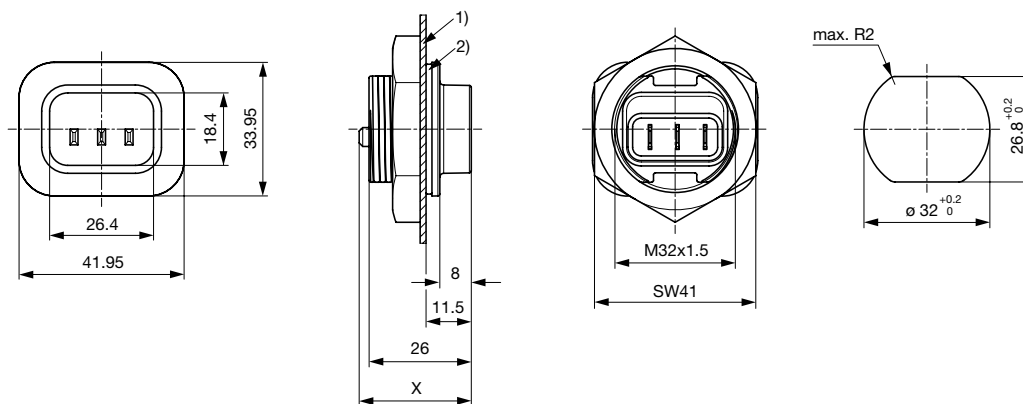
| Organization   | Design                         | Standard     | Description   |
|--|--------------------------------|--------------|---|
|  | Designed for applications acc. | IEC/UL 60950 | IEC 60950-1 includes the basic requirements for the safety of information technology equipment. |

### Compliances

The product complies with following Guide Lines

| Identification   | Details                      | Initiator   | Description   |
|--|------------------------------|-------------|---|
|  | CE declaration of conformity | SCHURTER AG | The CE marking declares that the product complies with the applicable requirements laid down in the harmonisation of Community legislation on its affixing in accordance with EU Regulation 765/2008. |
|  | RoHS                         | SCHURTER AG | EU Directive RoHS 2011/65/EU  |
|  | China RoHS                   | SCHURTER AG | The law SJ / T 11363-2006 (China RoHS) has been in force since 1 March 2007. It is similar to the EU directive RoHS.  |
|  | Halogen Free                 | SCHURTER AG | SCHURTER strives to offer our customers halogen free products.  |
|  | REACH                        | SCHURTER AG | On 1 June 2007, Regulation (EC) No 1907/2006 on the Registration, Evaluation, Authorization and Restriction of Chemicals 1 (abbreviated as "REACH") entered into force.                               |

### Dimensions [mm]



X: Quick-connect terminals 4.8x0.8 mm: 28.5 mm

X: Quick-connect terminals 6.3x0.8 mm: 31.0 mm

X: Solder terminals: 25.5 mm

1) Panel

2) Gasket or protection cover

### All Variants

| Appliance Inlet | Connector | Kit | Color | Terminals Inlet                      | Order Number |
|-----------------|-----------|-----|-------|--------------------------------------|--------------|
| ●               |           | -   | black | Quick connect terminals 4.8 x 0.8 mm | 4312.0000    |
| ●               |           | -   | black | Quick connect terminals 6.3 x 0.8 mm | 4312.0001    |
| ●               |           | -   | black | Solder terminals                     | 4312.0002    |
| ●               | ●         | 1)  | black | Quick connect terminals 4.8 x 0.8 mm | 4312.0004    |
| ●               | ●         | 1)  | black | Quick connect terminals 6.3 x 0.8 mm | 4312.0005    |
| ●               | ●         | 1)  | black | Solder terminals                     | 4312.0006    |
| ●               |           | -   | white | Quick connect terminals 4.8 x 0.8 mm | 4312.0007    |
| ●               |           | -   | white | Quick connect terminals 6.3 x 0.8 mm | 4312.0008    |

| Appliance Inlet | Connector | Kit | Color | Terminals Inlet                      | Order Number |
|-----------------|-----------|-----|-------|--------------------------------------|--------------|
| ●               |           | -   | white | Solder terminals                     | 4312.0009    |
| ●               | ●         | 1)  | white | Quick connect terminals 4.8 x 0.8 mm | 4312.0011    |
| ●               | ●         | 1)  | white | Quick connect terminals 6.3 x 0.8 mm | 4312.0012    |
| ●               | ●         | 1)  | white | Solder terminals                     | 4312.0013    |

1) complete set consisting of appliance inlet and outlet

Most Popular.

Availability for all products can be searched real-time: <https://www.schurter.com/en/Stock-Check/Stock-Check-SCHURTER>

**Packaging unit** 10 Pcs

### Accessories

#### Description



**Protection cover**  
 Protection cover for waterproof appliance coupler 4761 / 4762

### Mating Outlets/Connectors shuttered

#### Category / Description



Connector Overview complete

IEC Connector protection degree IP67 / IP69K, Rewireable, Straight

4762

Connector further types to 4761

## X-ON Electronics

Largest Supplier of Electrical and Electronic Components

*Click to view similar products for [AC Power Entry Modules](#) category:*

*Click to view products by [Schurter](#) manufacturer:*

Other Similar products are found below :

[0098.0050](#) [6-1609987-9](#) [6167.0002](#) [7-6609955-2](#) [FN389-4-22](#) [FN9233ER-12-06](#) [FN9233S1-10-06](#) [FN9233S1-8-06](#) [FN9233S1B-8-06](#)  
[FN9233S1R-1-06](#) [FN9233S1R-12-06](#) [FN9233SB-1-06](#) [FN9233SB-12-06](#) [FN9233SB-8-06](#) [FN9233SR-10-06](#) [FN9233SR-3-06](#) [FN9244B-15-06](#)  
[HI](#) [FN9244EB-3-06](#) [FN9244EB-8-06](#) [FN9244ER-15-06](#) [FN9244ER-8-06](#) [FN9244ES1-8-06](#) [FN9244ESB-8-06](#) [FN9244EU-6-06](#)  
[FN9244R-12-06](#) [FN9244R-3-07](#) [FN9244R-8-06](#) [FN9244S1-10-06](#) [FN9244S1-12-06](#) [FN9244S1-3-06](#) [FN9244S1B-6-06](#) [FN9244S1R-3-06](#)  
[FN9244S-6-06](#) [FN9244SB-10-06](#) [FN9244SB-6-06](#) [FN9244SB-8-06](#) [FN9244SR-10-06](#) [FN9244SR-6-06](#) [FN9244U-3-06](#) [FN9244U-8-06](#)  
[FN9260A-6-06](#) [PE00SSSXB](#) [Fuse-H-EUR-1](#) [Fuse-H-USA-1](#) [PM00XD000](#) [PS0SSDBX0](#) [PS0SXSH3B](#) [A-0701-HT-H](#) [RAPC3FG](#) [15EJMS8](#)