



YOUR ADVANTAGE

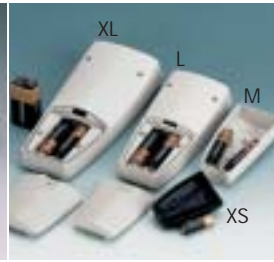
- Convincing ergonomics; unique design.
- Ideal for remote controls, with cables or with battery compartment.
- Cable strain relief for sizes M, L and XL for cables \varnothing 3.4 - 5.9 mm. Cable strain relief already included.
- Optionally in material permeable to infra-red signals from stock. Sizes L and XL with battery compartment only bottom in PMMA (plexiglass®), top part in ABS. For utmost efficiency the front face is polished.
- Recessed operating area to protect the membrane keyboard (M/L/XL).
- Practical belt / pocket clip (size M/L/XL), please refer to page 19 for part-no.

STANDARD COLOURS

Off-white, RAL 9002.
 Black, RAL 9005.
 Fine textured surface.
 Please refer to colour chart on page 228.

MATERIAL

ABS (UL 94 HB) or PMMA (plexiglass®) permeable to infra-red signals. *Cases made of PMMA are not comparable to cases made of ABS in terms of mechanical load-bearing capacity. In spite of great improvements in the composition compared with standard moulding materials, its special property is infrared permeability. This means that special load tests may lead to unfavourable results.*
 Please refer to the specifications on pages 229-231.



APPLICATIONS

Remote controls of all types, wireless or with cable connection. Especially suitable for use in hospitals and social fields as well as in industry and households.



Signal transmitter with a set of keys.



NEW: Holder for secure storage (M/L/XL), see page 19.

ERGONOMIC AND SMART

This case design is extremely convincing with its unique contoured profile, which fits comfortably in the hand for ease of use.

The SMART-CASES are available in 4 sizes.

Ideally suited for rubber keyboards and press buttons, SMART-CASES M, L and XL can also be used together with membrane keyboards.

EMC

Cases marked with ⚡ are available with aluminium metallization on demand. The battery compartments and lids won't be metallized. Other sizes available on demand.
 See also pages 226-227.

SERVICE-CENTER

Machining on modern CNC-controlled machines.
 Lacquering, Silk screen and tampo printing.
 See pages 221-227.

SMART-CASE XS



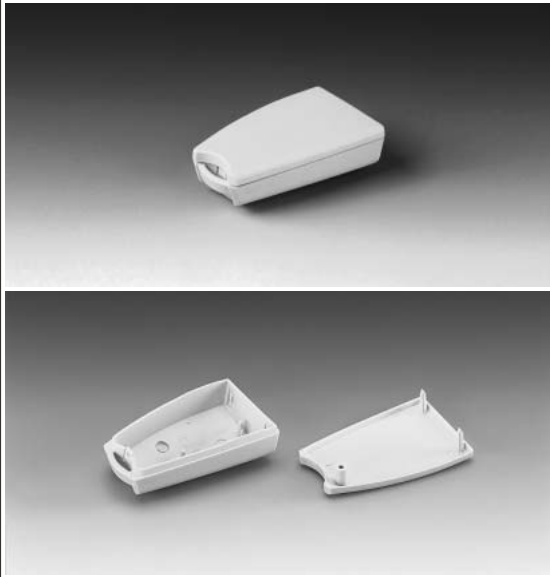
SMART-CASE

DESIGN

Miniature case composed of 2 parts. Top and base part are assembled by 1 screw.
With location bar for a keyring. Space for a 12 V round cell and small round cells (similar to watch batteries).

SUPPLY

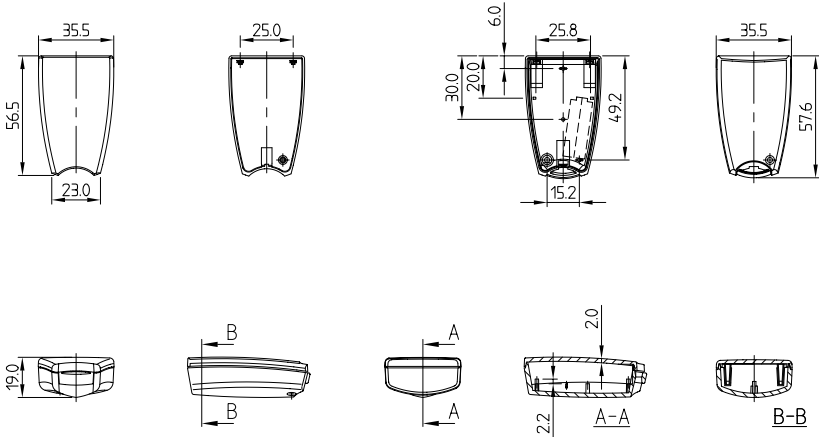
1 base and 1 top part with 1 self-tapping screw.



PROTECTION CLASS IP 40

Detailed drawing available on demand in dwg, dxf or pdf format.

⊕ ⊕ = Type of screw for case fixing cross head



Max. size of PCB: drawing available on demand

⊕ H (PH1)

SERVICE-CENTER See pages 221-227.	CASE				Part-No.	
	Outside dim. in mm			Colour		Material
	L	W	H			
	57.6	35.5	19	off-white		ABS
57.6	35.5	19	black	ABS	A 90 64 109	
57.6	35.5	19	black	PMMA (plexiglass®)*	A 90 64 209	
ACCESSORIES						
Article			Version			
Keyring			nickel-plated, ø 20.5 mm			
					A 91 64 001	

* see note on "mechanical load-bearing capacity" under Material page 14

VERSION I

Case-top without recessed operating area. IP 41

VERSION II

Case-top with recessed operating area. IP 41

VERSION III

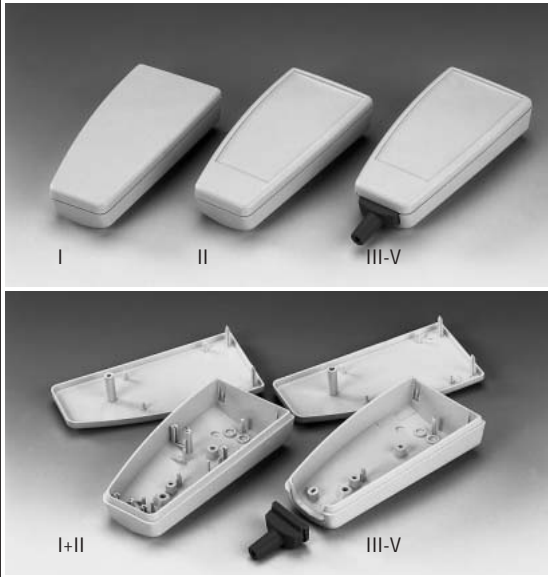
Same version as II. But with cable strain relief, suitable for round cables ø 5.0 - 5.9 mm.

VERSION IV

Same version as II. But with cable strain relief, suitable for round cables ø 4.2 - 5.0 mm.

VERSION V

Same version as II. But with cable strain relief, suitable for round cables ø 3.4 - 4.2 mm.

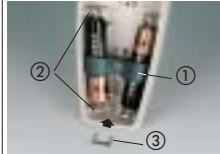


DESIGN

Ergonomic case composed of two parts. Location at the front along with a screw in the center of the case. Integrated supports for two 1.5 V micro cells (AAA).

SUPPLY

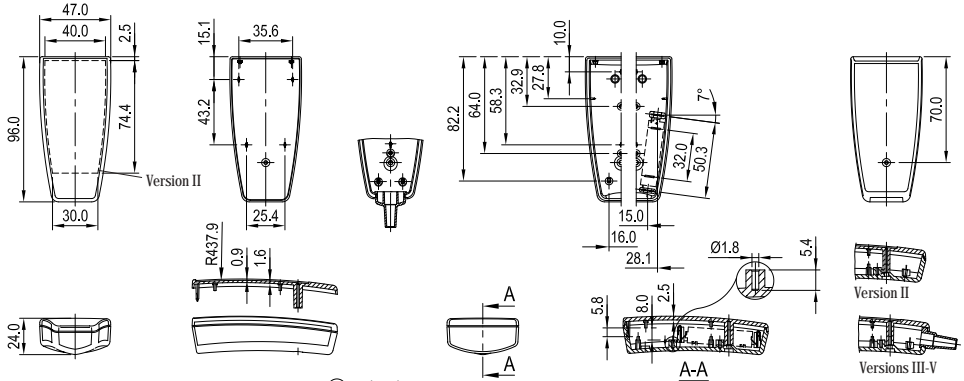
1 base and 1 top part with 1 self-tapping screw. Cable strain relief is already included in the supply for the corresponding version.



- ① Battery holder
- ② Set of battery clips
- ③ Battery contact

Detailed drawing available on demand in dwg, dxf or pdf format.

⊕ ⊕ = Type of screw for case fixing cross head



Max. size of PCB: drawing available on demand

⊕ Z (PZ1)

Part-No.		CASE			Colour	Material	
Version I	Version II	Outside dim. in mm	L	W			H
A 90 66 107	A 90 66 117	96	47	24	off-white, RAL 9002	ABS (UL 94 HB)	
A 90 66 109	A 90 66 119	96	47	24	black, RAL 9005	ABS (UL 94 HB)	
A 90 66 209	A 90 66 219	96	47	24	black, RAL 9005	PMMA (plexiglas®) *	
Version III	Version IV	Version V	L	W	H	Colour	Material
A 90 66 127	A 90 66 137	A 90 66 147	96	47	24	off-white, RAL 9002	ABS (UL 94 HB)
A 90 66 129	A 90 66 139	A 90 66 149	96	47	24	black, RAL 9005	ABS (UL 94 HB)

SERVICE-CENTER

See pages 221-227.

ACCESSORIES	
Article	Version / Application
A 91 66 001	Set of battery clips
A 91 66 002	Battery contact
A 91 66 003	Battery holder

Description and references for Belt/Pocket clip see page 19.

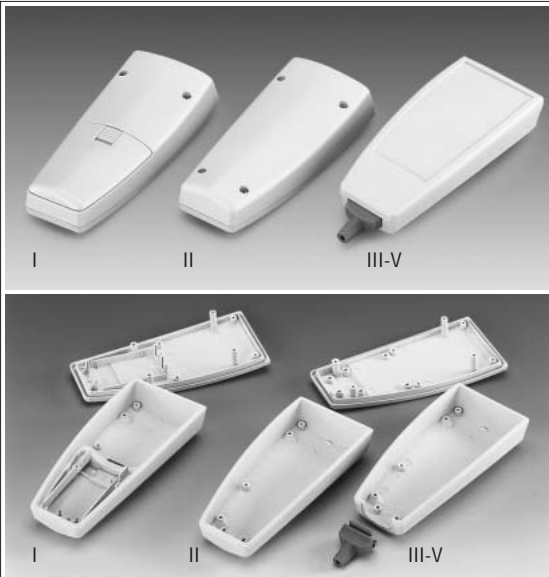
DESIGN

Ergonomic hand-held box. Solid design. With recessed operating area, e.g. for membrane keyboards. With and without externally accessible battery compartment for two 1.5 V mignon cells (AA) or a 9 V flat battery. Additional versions with cable strain relief. PCBs can be fixed in the top and base part. Sealing available as an accessory.

SUPPLY

Case-top and base, assembly kit.

Battery compartment lid and cable strain relief is already included in the supply for the corresponding version.



VERSION I

With battery comp., IP 43.

VERSION II

Without battery compartment. IP 65 with sealing (acc.).

VERSION III

Without battery comp. With cable strain relief, suitable for round cables \varnothing 5.0 - 5.9 mm. IP 65 with sealing (acc.), tested with cable \varnothing 5.8 mm.

VERSION IV

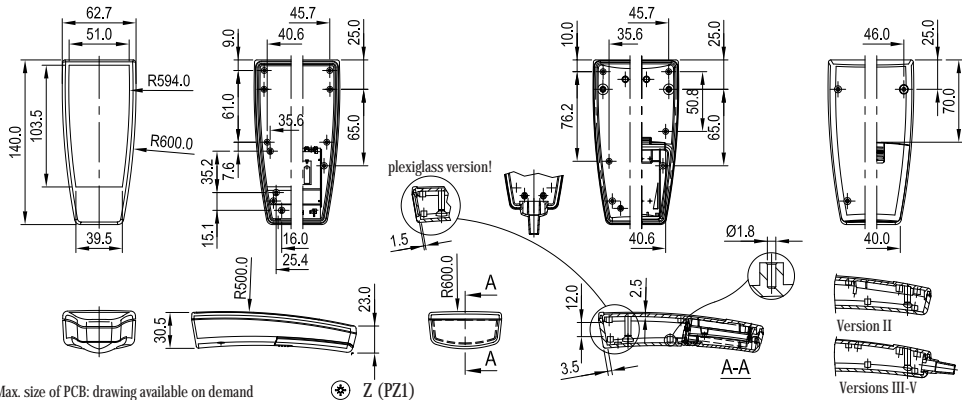
Without battery comp. With cable strain relief, suitable for round cables \varnothing 4.2 - 5.0 mm.

VERSION V

Without battery comp. With cable strain relief, suit. for round cables \varnothing 3.4 - 4.2 mm.

Detailed drawing available on demand in dwg, dxf or pdf format.

⊕ ⊕ = Type of screw for case fixing cross head



Max. size of PCB: drawing available on demand

⊕ Z (PZ1)

SERVICE-CENTER

See pages 221-227.

Description and references for Belt/Pocket clip see page 19.

CASE (Part-No. with \neq see EMC page 14)					Part-No.	
Outside dim. in mm			Colour	Material	Version I	Version II
L	W	H				
140	62.7	30.5	off-white	ABS (UL 94 HB)	A 90 67 107 \neq	A 90 67 117 \neq
140	62.7	30.5	black	ABS (UL 94 HB)	A 90 67 109 \neq	A 90 67 119 \neq
140	62.7	30.5	black	base PMMA*, top ABS (UL 94 HB)	A 90 67 209 \neq	-
					Version III	Version V
140	62.7	30.5	off-white	ABS (UL 94 HB)	A 90 67 127 \neq	A 90 67 137 \neq A 90 67 147 \neq
140	62.7	30.5	black	ABS (UL 94 HB)	A 90 67 129 \neq	A 90 67 139 \neq A 90 67 149 \neq
ACCESSORIES						
Article	Version					
Set of battery clips	tin plated, for two 1.5 V mignon cells (AA)				A 91 90 002	
Plug-in contact	for 1 x 9 V flat battery (PP3)				A 91 60 003	
Sealing	for versions II-V, for a higher protection class				A 91 67 002	

* see note on "mechanical load-bearing capacity" under Material page 14

VERSION I

 With battery compartment.
IP 43.

VERSION II

Without battery compartment. IP 65 with sealing (acc).

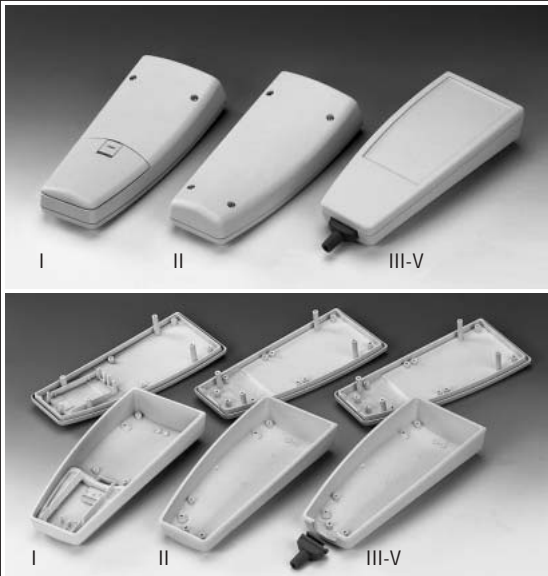
VERSION III

 Without battery comp. With cable strain relief, suitable for round cables \varnothing 5.0 - 5.9 mm.

VERSION IV

 Without battery comp. With cable strain relief, suitable for round cables \varnothing 4.2 - 5.0 mm.

VERSION V

 Without battery comp. With cable strain relief, suit. for round cables \varnothing 3.4 - 4.2 mm.

DESIGN

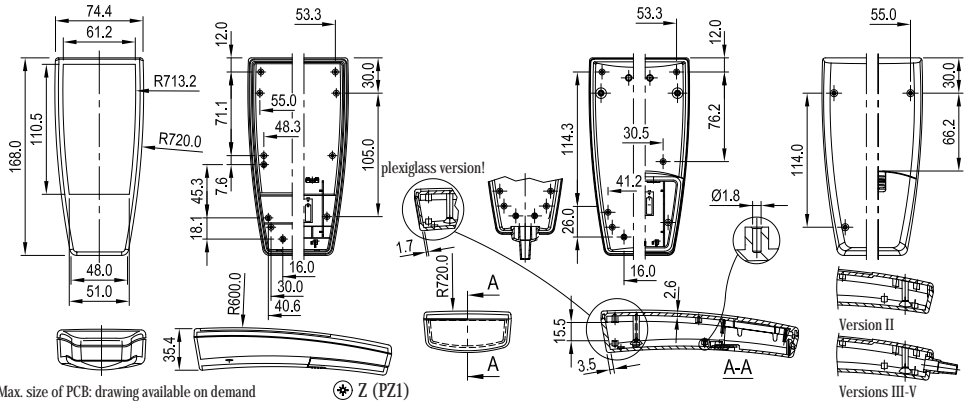
Large, ergonomic hand-held box. Solid design. With recessed operating area, e.g. for membrane keyboards. With and without externally accessible battery compartment for two 1.5 V mignon cells (AA) or a 9 V flat battery. Additional versions with cable strain relief. PCBs can be fixed in the top and base part. Sealing as an accessory.

SUPPLY

Case-top and base, assembly kit.
Battery compartment lid and cable strain relief is already included in the supply for the corresponding version.

Detailed drawing available on demand in dwg, dxf or pdf format.

= Type of screw for case fixing: cross head



Part-No.		CASE			Colour	Material	
Version I	Version II	Outside dim. in mm	L	H			
A 90 68 107	A 90 68 117	168	74.4	35.4	off-white, RAL 9002	ABS (UL 94 HB)	
A 90 68 109	A 90 68 119	168	74.4	35.4	black, RAL 9005	ABS (UL 94 HB)	
A 90 68 209	-	168	74.4	35.4	black, RAL 9005	bottom part PMMA*, top part ABS (UL 94 HB)	
Version III	Version IV	Version V	L	W	H	Colour	Material
A 90 68 127	A 90 68 137	A 90 68 147	168	74.4	35.4	off-white, RAL 9002	ABS (UL 94 HB)
A 90 68 129	A 90 68 139	A 90 68 149	168	74.4	35.4	black, RAL 9005	ABS (UL 94 HB)

ACCESSORIES

Article	Version / Application
A 91 90 002	Set of battery clips tin plated, for two 1.5 mignon cells (AA)
A 91 60 003	Plug-in contact for 1x9 V flat battery (PP3)
A 91 68 002	Sealing for versions II-V, for a higher protection class

SERVICE-CENTER

See pages 221-227.

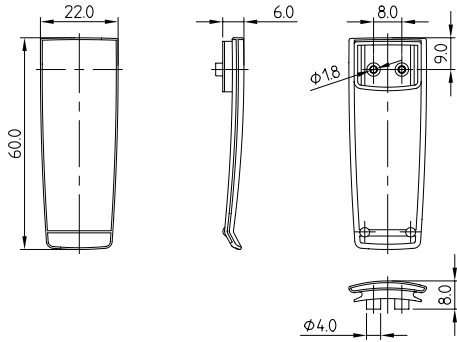
Description and references for Belt/Pocket clip see page 19.

BELT / POCKET CLIP

Special clip for Smart-Case M, L and XL. The versions are already provided with premoulded center holes which can be drilled or punched in order to fit the clip.

Supply:

- 1 belt / pocket clip.
- 2 fixing screws \varnothing 2.2 x 6 mm.



SMART-CASE

Version
off-white, RAL 9002
black, RAL 9005

Part-No.

A 91 67 017

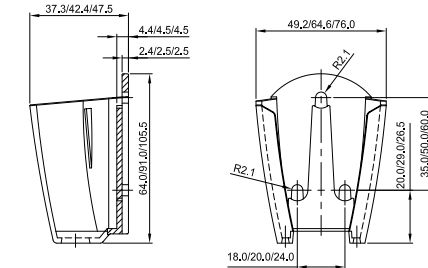
A 91 67 019

HOLDER

Special holders for Smart-Case M, L & XL for secure storage. The design is open at the bottom, allowing corded applications to be stored as well. The recessed front area of the case is easily accessible for operating purposes. Easy wall mounting using standard screws.

Supply:

- 1 holder.



For Smart-Case	Version
M	off-white, RAL 9002
M	black, RAL 9005
L	off-white, RAL 9002
L	black, RAL 9005
XL	off-white, RAL 9002
XL	black, RAL 9005

Part-No.

A 91 66 307

A 91 66 309

A 91 67 307

A 91 67 309

A 91 68 307

A 91 68 309