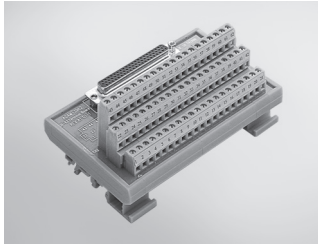


ADAM-3900 Series

DIN-rail Terminal Boards



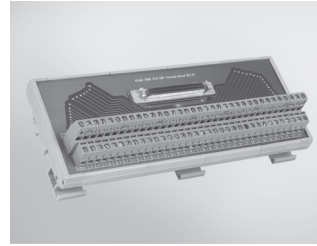
ADAM-3962
DB62 DIN-rail Wiring Board

Features

- Low cost universal DIN-rail mounting screw terminal module for DAQ cards with DB62 female connector
- Screw-clamp terminal blocks allow easy and reliable connections
- Case dimensions (W x L x H): 77.5 x 124.5 x 63.5 mm (3.1" x 4.9" x 2.5")

To Be Used With

PCI-1762



ADAM-3968
68-pin DIN-rail SCSI Wiring Board

Features

- Low cost universal DIN-rail mounting screw terminal module for industrial applications with 68-pin SCSI female connector
- Case dimensions (W x L x H): 85.6 x 191.2 x 51 mm

To Be Used With

PCI-1710U/UL, PCI-1710HGU, PCI-1711U/UL, PCI-1712/L, PCI-1716/L, PCI-1741U, PCI-1742U, PCI-1747U, PCI-1721, PCI-1723, PCI-1751, PCI-1753, PCI-1723, PCI-1780U



ADAM-3968/20
68-pin SCSI to 3 20-pin Box Header Board

Features

- Low cost universal DIN-rail mounting screw terminal module for PC-LabCard™ products with 68-pin SCSI connectors
- Converts one 68-pin SCSI connector to three 20-pin connectors
- Case dimensions (W x L x H): 77.5 x 80 x 54.3 mm (3.1" x 3.2" x 2.1")

To Be Used With

PCI-1751, PCI-1753



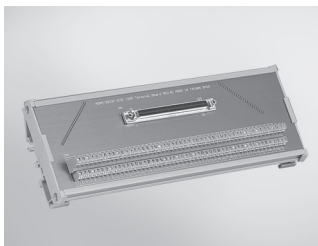
ADAM-3968/50
68-pin SCSI to 2 50-pin Box Header Board

Features

- Low cost universal DIN-rail mounting screw terminal module for PC-LabCard™ products with 68-pin SCSI connectors
- Converts one 68-pin SCSI connector to two 50-pin Opto-22 compatible box headers
- Case dimensions (W x L x H): 77.0 x 101.0 x 54.3 mm (3.0" x 4.0" x 2.1")

To Be Used With

PCI-1751, PCI-1753



ADAM-39100
100-pin DIN-rail SCSI Wiring Board

Features

- Low cost universal DIN-rail mounting screw terminal module for industrial applications with 100-pin SCSI female connector
- Case dimensions (W x L x H): 80 x 230 x 42 mm (3.14" x 9.05" x 1.65")

To Be Used With

PCI-1240U, PCI-1755

X-ON Electronics

Largest Supplier of Electrical and Electronic Components

Click to view similar products for [Terminal Block Interface Modules](#) category:

Click to view products by [Advantech](#) manufacturer:

Other Similar products are found below :

[73-551-6002I](#) [GCN1MX25B](#) [11S](#) [DIN-50P-01](#) [DIN-68H-01](#) [DIN-96DI-01](#) [2291901](#) [2900185](#) [2903392](#) [2907794](#) [2M10FCL](#) [2281759](#)
[2906249](#) [2907808](#) [TB ML 3P ST D5.08](#) [5604442](#) [XW2B-40G5-T](#) [5606629](#) [XW2B-20G5-D](#) [2903870](#) [5541988](#) [5541962](#) [1776613-1](#) [XW2B-](#)
[34G4](#) [XW2B-60G5](#) [XW2R-E34G-C1](#) [XW2R-E34G-C3](#) [XW2R-J40G-T](#) [XW2R-P34G-C4](#) [XW2B-50G5](#) [XW2R-E40G-T](#) [XW2R-E34G-C2](#)
[XW2R-J34G-C2](#) [ADAM-3920R-AE](#) [060-6827-06](#) [2311030](#) [2287708](#) [XW2C-20G6-IO16](#) [XW2R-J20G-T](#) [XW2B-60G4](#) [GCN1-T](#)
[00111550102](#) [2908853](#) [2908851](#) [2908852](#) [2908850](#) [1033201](#) [5541234](#) [410-261](#) [5521322](#)