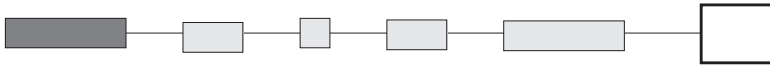




8000 series

Momentary or alternate action pushbutton switches

APPROVAL



UL

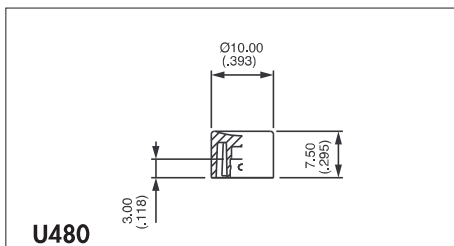
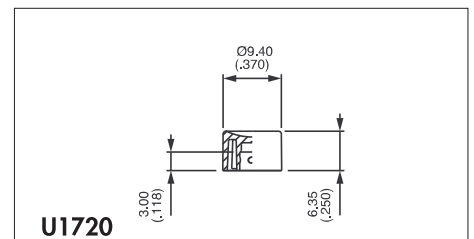
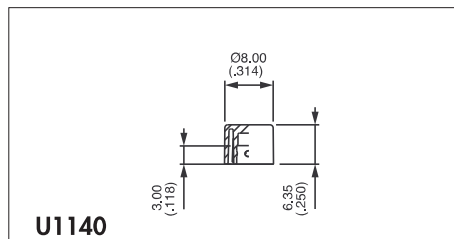
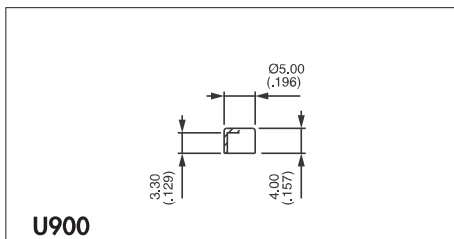
Availability : consult factory for details of approved models.

Marking : to order switches marked UL, complete above box with "UL".

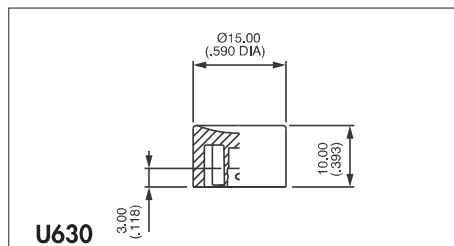
CAPS

Order separately.

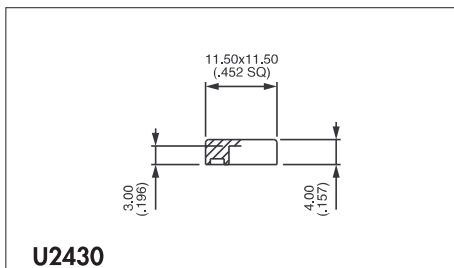
The caps below are for \varnothing 4 mm plungers (standard and -9), except U2600.



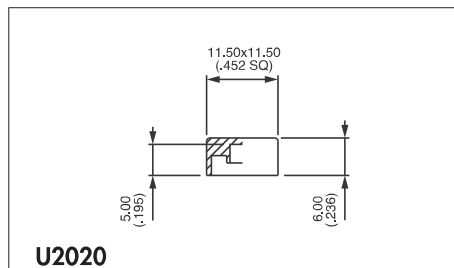
Standard



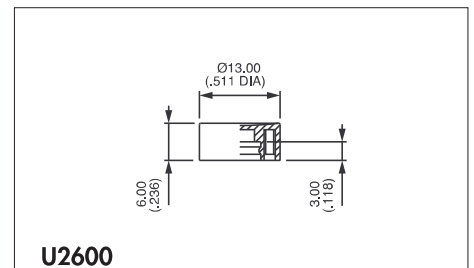
Cap colours	
Replace last "0" by number	
1	blue
1/4	dark blue
2	black
3	green
4	grey
5	yellow
6	red
7	ivory
7/1	white
9	orange



Square



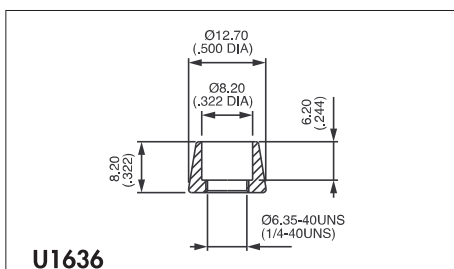
Square



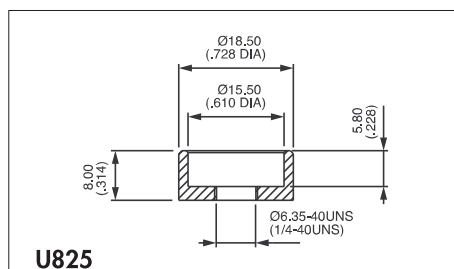
For large plunger -6 only.

DRESS NUTS

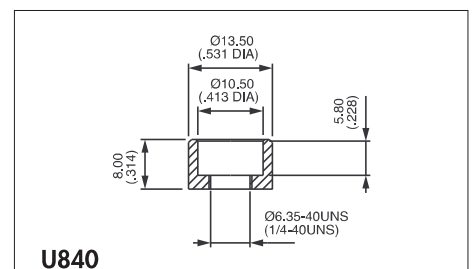
Chrome plated. Order separately.



For cap U1140



For cap U630



For cap U480