

# ARCA Enclosures

## Product presentation

### High Performance Polycarbonate Cabinets

Superior performance and security in most demanding environments. Easy to use. Quick to install. All this is driven by innovation and market driven product development.

ARCA is a non corrosive and cost effective alternative to sheet steel cabinets being installed in harsh and demanding environments. ARCA has all the features of steel but benefits of high grade thermoplastic.

The Fibox ARCA Cabinet is made from rugged polycarbonate which offers many benefits: non corrosive, high impact resistance, low maintenance, UV resistant, aesthetically pleasing.



# ARCA Enclosures

## Features



100 % corrosion-free

High impact resistance – Robust and rigid design - IK10

High ingress protection - Watertight – IP66

Electrically insulated – 1500 V DC

UV stabilized raw material – UL 508 (UL 746c)

Flammability rating according to UL 94-5VA

Easy to customize

Low maintenance

# ARCA Enclosures

## Technical Information

Property	Value
Material	Glass fiber reinforced polycarbonate
RAL Color	7035
Ingress Protection	IP66
Impact resistance	IK10 +35°C, IK8 -25°C
Temperature range, PUR Gasket	-40°C to +80°C
Electrical insulation	Totally insulated up to 1500VDC according to Low Voltage Directive 2006/95/EC
Flammability rating	UL 94-5VA, glow wire 960°C
UV resistance	UL 508
Non-toxicity	Halogen free, according to DIN/VDE 0472, Part 815
Standards	EN/IEC 62208 and EN/IEC 61439-1-4

# ARCA Enclosures

## Approvals and tests

**EN/IEC**

**UL/ULc**

**GOST**

**UV**

- 5000h accelerated test
- UV protective coating available for extra protection

**Other certificates on request**

# ARCA Enclosures



## Product Key ARCA

ARCA 203015 S

S Swinghandle  
W Cover with window, 2 -point locking

203015	200x300x150 mm
302015	300x200x150 mm
304015	300x400x150 mm
304021	300x400x210 mm
403015	400x300x150 mm
403021	400x300x210 mm
405021	400x500x210 mm
406021	400x600x210 mm
504021	500x400x210 mm
507030	500x700x300 mm
604021	600x400x210 mm
608030	600x800x300 mm
705030	700x500x300 mm
806030	800x600x300 mm

Polycarbonate

# ARCA Enclosures

## Benefits

### ARCA DIN RAIL FRAME SET

- Very easy and quick installation
- Easy and quick assembly of electrical components (6 minutes)  
Can be done on work bench and then entire assembled frame can be easily mounted on cabinets just by four screws
- Corner brackets and front plates made of plastic (spec)
- Set: includes Din rails, front plate, corner brackets and screws
- DIN rail distance 150mm



### INNER DOOR

- Very quick to install – No tools or screws required
- Hinged, lockable
- Made of painted aluminium and steel



### FULL PACKED AND READY TO GO

- Maximum installation features
- Fastest on the market
- Light weight
- Easy to customize
- Control unit for heating



**ARCA - MAKE DIFFICULT EASY**

# ARCA Enclosures

## Product and features



### Shaped gasketed rib

- Better waterproof
- Water not collected on the upper side of the gasket rib



### Mounting Pods

- In the bottom and on all 4 sides for multiple purposes
  - 6 pods from 500x400 and up



### Corner design

- Double corner to secure fixing without destroying the IP
- Robust and rigid cabinet

# ARCA Enclosures

## Product and features



### Door

- Door opening angle 120°
- Both horizontal and vertical option
- Pre-formed mounting pods inside
- Easy access to the contents



### 2 Versions

- Grey and with glued Window
  - No transparent door
    - Same mould cannot produce both glass fiber filled PC and transparent (moulds for transparent need to be polished and glass fiber acts as sand paper for polished surface).
    - Glass fiber important for rigidity
    - Visual it will not look nice if you can see gasket, rib, locks etc. from the front



# ARCA Enclosures

## Product and features



### Hinge

- Easy removable internal hinge
- Easy assembly and refined appearance



### Gasket

- Wide and secured gasket with PUR material for high quality sealing

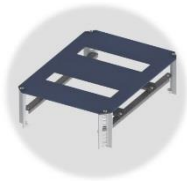


### Special moulded rib design

- Reinforcement ribbing to make door rigid and more stable

# ARCA Enclosures

## Accessories available



### Din rail frame set

- Very easy and quick installation
- Easy and quick assembly of electrical components - can be done on work bench and then entire assembled frame can be easily mounted on cabinets just by four screws
- Corner brackets and front plates made of plastic
- Set: includes Din rails, front plate, corner brackets and screws
- DIN rail distance 150mm



### Inner door

- Very quick to install – No tools or screws required
- Hinged, lockable
- Made of painted aluminium and steel



### Door guide

- Secure closing for mid and large size cabinets
- Included in the cabinet



### Locking options

- DB3 standard
- Key, triangle, square, etc. as accessory

# ARCA Enclosures

## Accessories available



### Wall mounting

- Two installation options:
  - Secure mounting from inside (stainless steel)
  - Quick installation from outside (plastic)
- Wall mounting brackets with two depths: 10mm and 50mm
  - Stainless Steel
  - Plastic



### Pole mounting

- Accessory kit for mounting cabinets on poles: pole diameter 100-300mm

# ARCA Enclosures

## Accessories available



### Flanges

- By machining cut out available 3020-8060 range of threaded, smooth and membrane flanges for managing cable entries



### Mounting plates

- Galvanized steel
- Perforated galvanized steel (26x11mm)
- Multiperforated galvanized steel (Ø3,6mm)
- Resin bonded paper board

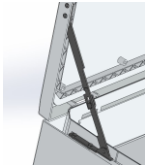


### Adjustable mounting plate and corner adjustment set

- Easy to assemble the mounting plate to desired depth with corner brackets.

# ARCA Enclosures

## Extended accessory range



### Door Stopper

- Left/Right/Small/Mid

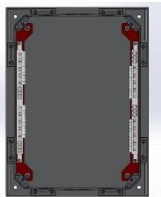


### Rain Canopy Set

- Or snow roof as we call it in the cold north



### Coupling and connecting part Kit



### PEN bar system

- Neutral and Earth bar with quick access up to 600x400 only

# ARCA Enclosures

## Applications

- Heavy industries
- Steel mills
- Petrochemical plants
- Temporary connections
- Public services
- Traffic signalling
- Telecom
- Water and Waste
- Control units
- Infra structure
- OEM panels
- DIN-rail enclosures
- Pump controls
- Marine applications
- Smart grid applications



# ARCA Enclosures

## Remember to use...

- The right cabinet to the right job
  - Environment
  - Application
  - Protection





# ARCA Enclosures

## Superior Performance

### Why Polycarbonate?

The main body of the Fibox ARCA cabinet is made from rugged glass-fiber filled polycarbonate with many benefits:

- 100% Corrosion Free.
- Low maintenance.
- High impact resistance. Watertight even after major impacts.
- Easy to customize. Possible to have recess areas and threaded holes.
- UV resistant
- Aesthetically pleasing





# ARCA Enclosures

## Innovations – Make Difficult Easy

### Technological Advantage

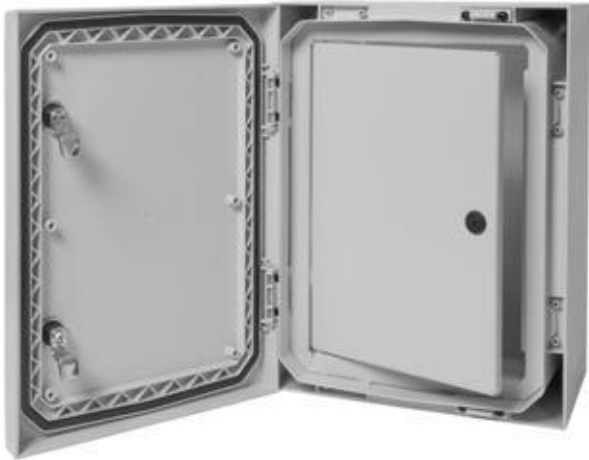
- Polycarbonate gives us an opportunity to “Make Difficult Easy” in a smart way not possible in steel world.
- Low maintenance

### Innovations - Make Difficult Easy

- Patent - Easy-to-use DIN rail frame set design – quick to install - no special tools needed
- Patent - Lockable inner door – no tool required for installation

# ARCA Enclosures

## The Cabinet Platform for the future



ARCA Product platform enables the new feature's development through intelligent accessories.

Global market driven specified accessories available from the launch.

Future solutions development possible based on local markets customer needs.



# ARCA Enclosures

## Learn more:

- [www.fibox.com](http://www.fibox.com)
  - [ARCA products](#)
  - [ARCA accessories](#)
- Catalogues
  - [ARCA Cabinet ENG/DE](#)
  - [Fibox Enclosure and Cabinet Overview:](#)
  - [Enclosure catalogue 5.0](#)
- Video
  - [ARCA IEC](#)