

Polymer ball transfer unit made from xirodur® B180



Order key

Type

Material

BB-522-B180-POM

Ball bearing

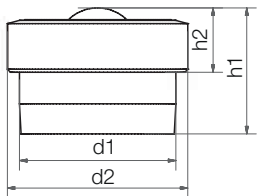
Type

Housing material

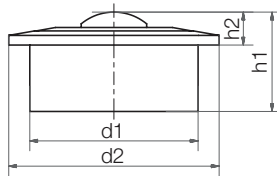
Ball transfer unit

Polymer ball transfer unit

POM: POM (ball transfer unit)



BB-505-B180-POM



BB-515-B180-POM

BB-522-B180-POM

Technical data and dimensions [mm]

| Size | Max. stat. bearing load axial [N] | Inner Ø | | Height | | Weight [g] | Part No. |
|------|-----------------------------------|---------|------|--------|-----|------------|------------------------|
| | | d1 | d2 | h1 | h2 | | |
| 505 | 35 | 10.4 | 12.0 | 8.4 | 4.3 | 0.9 | BB-505-B180-POM |
| 515 | 80 | 24.0 | 31.0 | 21.0 | 9.8 | 8.7 | BB-515-B180-POM |
| 522 | 110 | 36.0 | 45.0 | 30.0 | 9.8 | 28.8 | BB-522-B180-POM |



Order example:

BB-505-B180-POM: Polymer ball transfer unit with housing material xirodur® B180 and POM ball transfer unit

Available

from stock