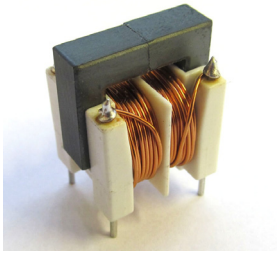


DUS-16 COMMON MODE CHOKES

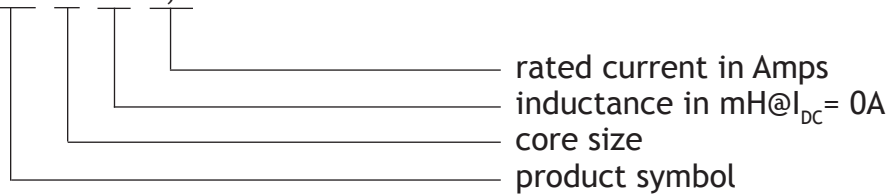


APPLICATIONS:

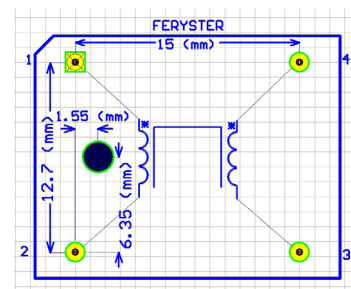
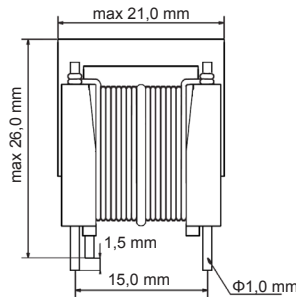
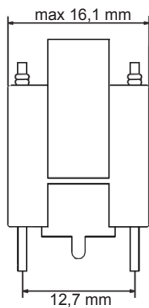
- Suppression of common mode noise
- Line filters
- SMPS
- Electronic ballasts
- Complies with EN 61558-1:2005 and PN-EN 60938-1
- Insulation test voltage: 2100 VAC
- Rated voltage: 250 VAC +10%
- Inductance tolerance: -30%/+50%
- Lower/Upper category temperature: -25°C/+100°C

ORDERING CODE:

DUS-16/33/0,5



DIMENSIONS:



Footprint - Top view

ELECTRICAL PROPERTIES:

Part number	Marking	L_{nom} [mH]	I_{max} [A]	RDC_{max} [Ω]
DUS-16/33/0,5	333.A50 FERYSTER	2X33	0,5	2,250
DUS-16/22/0,7	223.A70 FERYSTER	2X22	0,7	1,250
DUS-16/15/0,9	153.A90 FERYSTER	2X15	0,9	0,770
DUS-16/10/1,2	103.1A2 FERYSTER	2X10	1,2	0,500
DUS-16/6,8/1,2	682.1A2 FERYSTER	2X6,8	1,2	0,350
DUS-16/4,7/1,5	472.1A5 FERYSTER	2X4,7	1,5	0,280
DUS-16/3,3/1,5	332.1A5 FERYSTER	2X3,3	1,5	0,230
DUS-16/2,2/2,5	222.2A5 FERYSTER	2X2,2	2,5	0,130
DUS-16/1,5/2,8	152.2A8 FERYSTER	2X1,5	2,8	0,080
DUS-16/1,0/2,8	102.2A8 FERYSTER	2X1,0	2,8	0,065
DUS-16/0,68/3,0	681.3A0 FERYSTER	2X0,68	3,0	0,055
DUS-16/0,47/5,0	471.5A0 FERYSTER	2X0,47	5,0	0,029
DUS-16/0,33/5,0	331.5A0 FERYSTER	2X0,33	5,0	0,026

CHARACTERISTICS:

