



### Edge protection grommets

Edge protection grommets are used wherever cable and wires are routed through outlets and apertures. HellermannTyton grommets offer excellent mechanical protection.

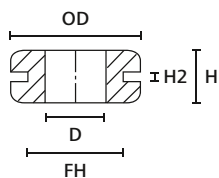
#### Features and Benefits

- Protects cables from sharp edges
- Provides additional strain relief
- Flexible and easy to apply
- High resistance to chemicals and environmental influences

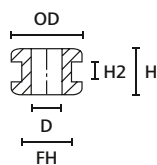


Edge protection grommets.

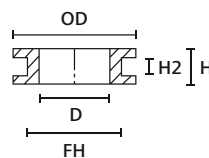
<b>MATERIAL</b>	Polyvinylchloride (PVC)	Polyvinylchloride, flame retardant (PVC-FR)
<b>Operating Temperature</b>	-30 °C to +60 °C	
<b>Shore Hardness A</b>	70±5	56±5
<b>Flammability</b>	UL94 HB	UL94 V0



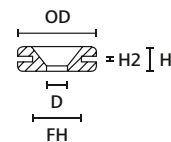
HV1101



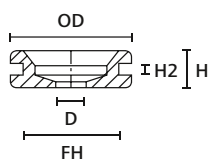
HV1201 to HV1218



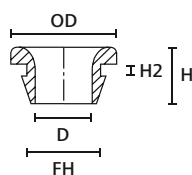
HV1301 to HV1305



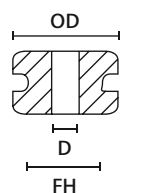
HV1401



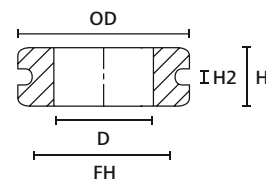
HV1402



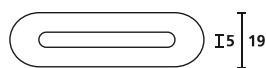
HV1502 to OP1503



HV1606 to HV1608



HV1606 to HV1608



HV1606 to HV1608



## Edge protection grommets

TYPE	Drawing	Bundle Ø max.	Hole Ø (FH)	Ø D	Height (H)	Height (H2)	Material	Colour	Article-No.
HV1101		25.5	19.0	12.0	10.0	1.6	PVC-FR	Black (BK)	633-01010
HV1212		9.0	6.0	4.0	7.0	1.0	PVC-FR	Black (BK)	633-02120
HV1201		9.5	6.4	4.0	5.6	1.6	PVC-FR	Black (BK)	633-02010
HV1201B		9.5	6.4	4.0	6.5	2.5	PVC-FR	Black (BK)	633-02020
HV1215		10.0	8.0	6.0	5.0	1.0	PVC-FR	Black (BK)	633-02150
HV1209		11.0	9.0	4.0	5.5	1.5	PVC-FR	Black (BK)	633-02090
HV1208		14.0	9.5	8.0	8.0	1.5	PVC-FR	Black (BK)	633-02080
HV1207		14.0	10.0	6.0	6.4	1.5	PVC-FR	Black (BK)	633-02070
HV1218		14.0	10.0	6.0	9.0	4.0	PVC-FR	Black (BK)	633-02180
HV1216		14.5	8.0	5.0	6.5	1.5	PVC-FR	Black (BK)	633-02160
HV1210		15.0	9.0	6.0	10.5	2.0	PVC-FR	Black (BK)	633-02100
HV1203		17.5	12.0	10.0	6.8	2.0	PVC-FR	Black (BK)	633-02030
HV1204		17.5	12.0	10.0	8.8	4.0	PVC-FR	Black (BK)	633-02040
HV1206		17.5	12.0	10.0	10.8	6.0	PVC-FR	Black (BK)	633-02060
HV1205		17.5	13.5	10.0	8.7	4.0	PVC-FR	Black (BK)	633-02050
HV1303		15.9	11.0	8.0	6.4	1.6	PVC-FR	Black (BK)	633-03030
HV1301		15.9	11.0	8.0	7.0	1.0	PVC-FR	Black (BK)	633-03010
HV1302		15.9	11.0	8.0	9.0	3.0	PVC-FR	Black (BK)	633-03020
HV1304		15.9	11.0	8.0	10.8	6.0	PVC-FR	Black (BK)	633-03040
HV1305		24.0	18.0	14.0	7.0	3.0	PVC-FR	Black (BK)	633-03050
		24.0	18.0	14.0	7.0	3.0	PVC-FR	White (WH)	633-03059
HV1401		15.9	9.5	5.0	4.8	0.8	PVC-FR	Black (BK)	633-04010
HV1402		23.0	18.5	6.0	7.0	2.0	PVC-FR	Black (BK)	633-04020
HV1502		11.5	8.0	6.5	8.0	1.5	PVC	Black (BK)	633-05020
HV1606		31.0	25.0	17.0	11.0	3.0	PVC-FR	Grey (GY)	633-06068
HV1607		43.0	37.0	29.0	11.0	3.0	PVC-FR	Grey (GY)	633-06078
HV1608		58.0	52.0	44.0	11.0	3.0	PVC-FR	Grey (GY)	633-06088

All dimensions in mm. Subject to technical changes.