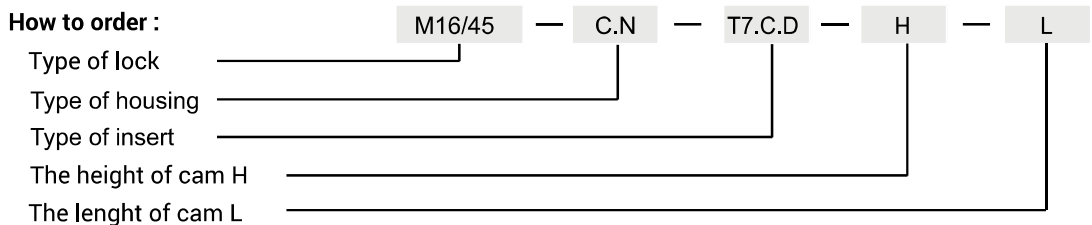


| Material for insert [D] | Inserts available | | | | | | |
|-------------------------|-------------------|----|-----|----|----|-----|-----|
| | T6 | T7 | T7S | S | N | KW6 | HEX |
| ZAMAK 5 | 11 | 12 | 13 | 14 | - | 16 | 17 |
| Brass | 21 | - | - | - | 25 | - | - |

| TYPE OF LOCK | | | | | | | | |
|--|--------|-------------|----------|----------|------------|-----|-----------------|-----|
| M16 | | | | | M16/45 | | | |
| Material type for housing as well as protective coating for housing and insert [C] | | | | | | | | |
| ZAMAK 5 | | | | | | | Stainless steel | |
| Chrome | Nickel | Zinc plated | RAL 9005 | RAL 7035 | No coating | 304 | 316 | |
| 01 | 02 | 03 | 04 | 05 | 0 | 9.1 | 9.2 | |
| Type of nut [N] | | | | | | | Stainless steel | |
| Steel | | | | | | | 304 | 316 |
| 13 | | | | | | | 14 | 15 |

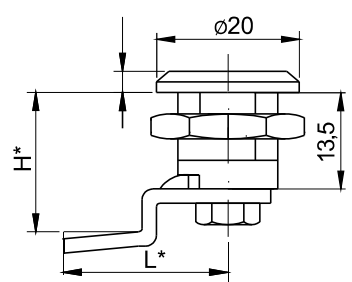
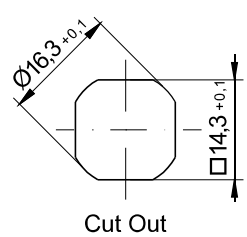


Available height of cam H = 13,5; 20
 Available length of cam L = 23; 25

For the housing made of stainless steel, the insert is also made of the same material

* Possibility to order in a different dimension

meaning: C - marking of material for housing as well as surface finish for housing and insert
 H.G - cam bended dimension



| INSERTS | FINISH [C] |
|---------|------------|
| | RAL 9005 |
| SK | 04 |

| NAME | COMPONENTS | MATERIAL |
|----------------|-----------------|-------------------|
| Lock 2.602.001 | Housing, insert | ZAMAK5 |
| | Cam | Steel zinc plated |