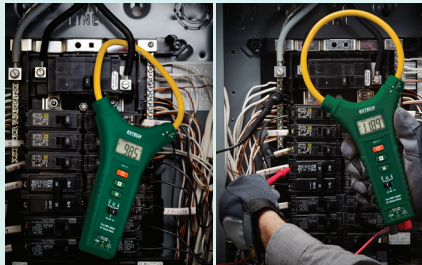


MA3110 CAT IV TRMS 3000A AC Flexible Clamp Meter

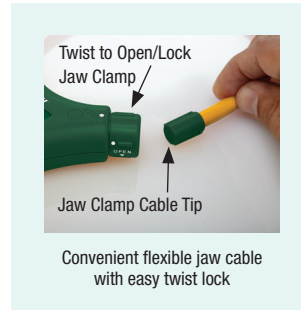


Flexible 11" (28cm) clamp jaw easily wraps around bus bars and cable bundles that may be difficult to access with regular clamp meters. The thin 8mm cable diameter easily fits into tight spaces. Includes test leads for multimeter functions measuring Voltage, Resistance, and Capacitance. True RMS and CAT IV rated allows for maximum accuracy and safety for your measurements.



Features

- True RMS for accurate readings of noisy, distorted or non-sinusoidal waveforms
- Autoranging AC Current
- 8mm cable diameter fits into tight spaces and around large conductors
- 6000 count LCD display
- Data Hold freezes reading on display
- Over range and Low battery indicator
- Auto power off with disable
- CAT III-1000V, CAT IV-600V category safety rating
- Complete with test leads and two AAA batteries



Specifications	Ranges	Max Resolution	Basic Accuracy
AC Current	600A, 3000A	0.1A, 1A	±1%
AC Voltage	6, 60, 600, 1000V	0.001V	±1%
DC Voltage	6, 60, 600, 1000V	0.001V	±0.8%
Resistance	600, 6k, 60k, 600k, 6M, 60MΩ	0.1Ω	±1.5%
Capacitance	6nF, 60nF, 600nF, 6μF, 60μF, 600μF	0.001nF	±3%
Diode/Continuity	Yes		
Dimensions	11.4 x 5.3 x 1.1" (290 x 135 x 27.8mm)		
Weight	7.3oz (208g) w/o batteries		

Ordering

MA3110 CAT IV True RMS 3000A AC Flex Clamp Meter (11" clamp cable)



UPC Code: 793950373132

X-ON Electronics

Largest Supplier of Electrical and Electronic Components

Click to view similar products for [Clamp Multimeters & Accessories](#) category:

Click to view products by [Extech](#) manufacturer:

Other Similar products are found below :

[FLUKE 1630-2](#) [ZAPDUMOD-03](#) [ZARKMS-01-99](#) [UT233](#) [TESTO 770-3](#) [0590 7703](#) [AX-3550](#) [AX-M266C](#) [BM079](#) [BM089](#) [BM157](#)
[BM162](#) [BM197](#) [KEW2210R](#) [FLUKE 80I-110S](#) [FLUKE A3002FC](#) [FLUKE I200](#) [FLUKE I200S](#) [FLUKE I3000FLEX-24](#) [FLUKE I310S](#)
[CIE600](#) [TESTO 770-2](#) [0590 7702](#) [34194A](#) [KEW2433R](#) [KEW8112](#) [FLUKE 772](#) [380976-K](#) [MA3110](#) [MA440](#) [MA443](#) [MA445](#) [FLUKE-374](#)
[FC](#) [TA74](#) [AMP-320](#) [CM55](#) [CM46](#) [I200](#) [ACD-6 PRO](#) [FLUKE-1630-2FC](#) [CM44](#) [CM42](#) [FLK-A3000 FC](#) [FLUKE-376 FC](#) [MA610](#) [EA30-](#)
[NIST](#) [F201](#) [F205](#) [MA193 \(250 MM\)](#) [DIGIFLEX 4000A 350MM](#) [DIGIFLEX 400A 170MM](#) [DIGIFLEX 400A 250MM](#)