



ELECTRONICS, INC.
 44 FARRAND STREET
 BLOOMFIELD, NJ 07003
 (973) 748-5089
<http://www.nteinc.com>

NTE1934X Integrated Circuit Positive Voltage Regulator, 5V, 2A

Features:

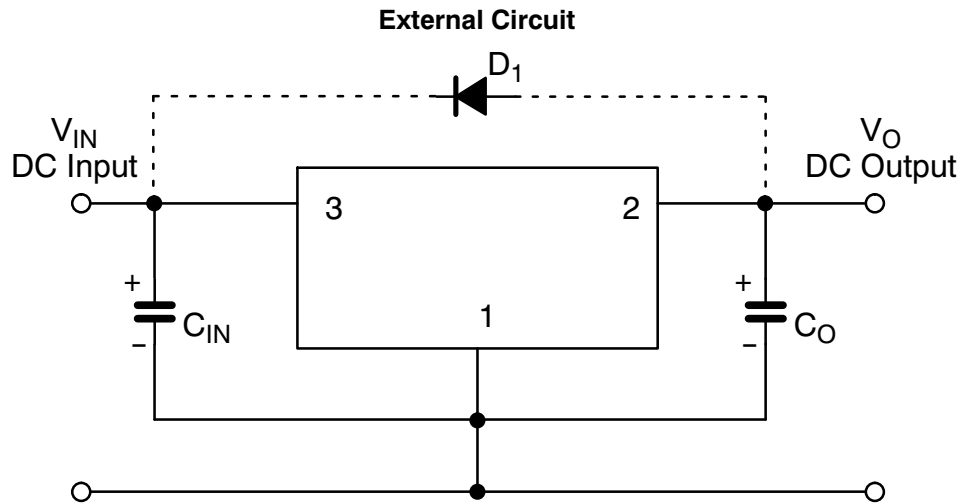
- 3 Pin Plastic Package TO3P
- Only Output Capacitor is Externally Required
- Precise Setting Voltage of $\pm 2\%$
- Wide Input Voltage Range
- Built-in Current Foldback Protection
- Ideal Combination of Passivated Power Transistor and High Reliability Flip-Chip Circuit

Absolute Maximum Ratings: ($T_A = +25^\circ\text{C}$ unless otherwise specified)

DC Input Voltage, V_{IN}	25V
Power Dissipation, P_C ($T_C = +25^\circ\text{C}$)	50W
(No Fin)	1.6W
Thermal Resistance, Junction-to-Case, R_{thJC}	2°C/W
Junction Temperature Range, T_J	-30° to $+125^\circ\text{C}$
Operating Ambient Temperature Range, T_{op}	-20° to $+100^\circ\text{C}$
Storage Temperature Range, T_{stg}	-30° to $+125^\circ\text{C}$

Electrical Characteristics: ($T_A = +25^\circ\text{C}$ unless otherwise specified)

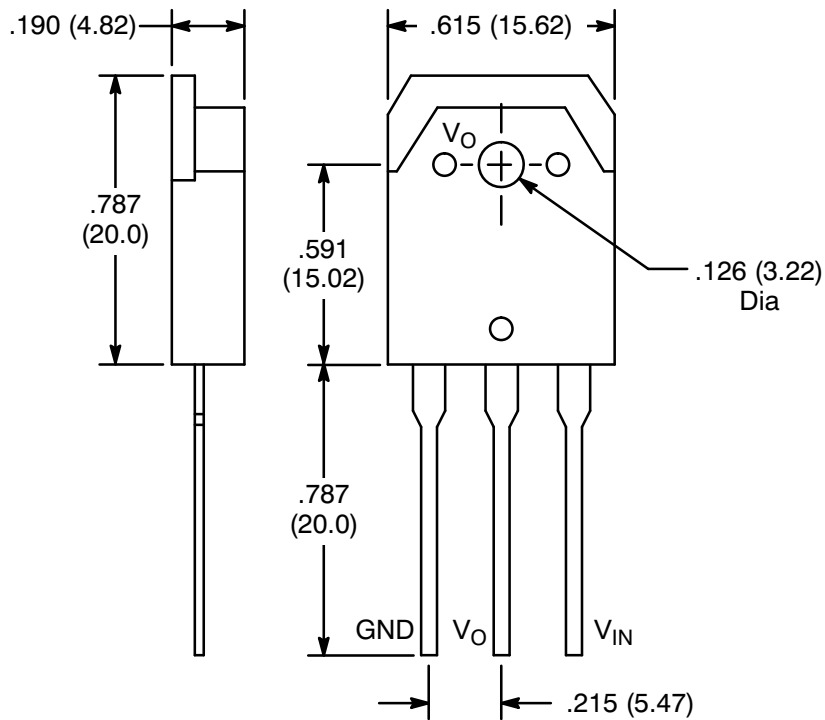
Parameter	Symbol	Test Conditions	Min	Typ	Max	Unit
DC Input Voltage	V_{IN}	$I_O = 2A$	6	-	15	V
Output Voltage	V_O	$V_{IN} = 8V, I_O = 1A$	4.9	5.0	5.1	V
Output Current	I_O		0	-	2	A
Line Regulation	ΔV_{LINE}	$V_{IN} = 6V$ to $15V, I_O = 1A$	-	10	30	mV
Load Regulation	ΔV_{LOAD}	$V_{IN} = 8V, I_O = 0$ to $2A$	-	40	100	mV
Temperature Coefficient	K_t		-	± 0.5	-	mV/ $^\circ\text{C}$
Ripple Rejection	RR	$f = 100\text{Hz}$ to 120Hz	-	54	-	dB
Foldback Current	I_{S1}	$V_{IN} = 8V$	2.4	-	-	A



Note 1. C_O : Output capacitor (47 to 100 μ F, 50V)

Note 2. C_{IN} : Capacitor for oscillation protection (approx. 0.33 μ F), if needed.

Note 3. Diode for reverse bias protection (NTE552) if needed.



X-ON Electronics

Largest Supplier of Electrical and Electronic Components

Click to view similar products for [Linear Voltage Regulators](#) category:

Click to view products by [NTE manufacturer](#):

Other Similar products are found below :

[LV56831P-E](#) [LV5684PVD-XH](#) [MAX202ECWE-LF](#) [MCDTSA6-2R](#) [L4953G](#) [L7815ACV-DG](#) [PQ3DZ53U](#) [LV56801P-E](#)
[TCR3DF13,LM\(CT](#) [TCR3DF39,LM\(CT](#) [TLE42794G](#) [L78L05CZ/1SX](#) [L78LR05DL-MA-E](#) [L78MR05-E](#) [033150D](#) [033151B](#) [090756R](#)
[636416C](#) [NCV78M15BDTG](#) [702482B](#) [714954EB](#) [TLE42794GM](#) [TLE42994GM](#) [ZMR500QFTA](#) [BA033LBSG2-TR](#)
[NCV78M05ABDTRKG](#) [NCV78M08BDTRKG](#) [NCP7808TG](#) [NCV571SN12T1G](#) [LV5680P-E](#) [CAJ24C256YI-GT3](#) [L78M15CV-DG](#) [L9474N](#)
[TLS202B1MBV33HTSA1](#) [L79M05T-E](#) [NCP571SN09T1G](#) [MAX15006AASA/V+](#) [MIC5283-5.0YML-T5](#) [L4969URTR-E](#) [L78LR05D-MA-E](#)
[NCV7808BDTRKG](#) [L9466N](#) [NCP7805ETG](#) [SC7812CTG](#) [NCV7809BTG](#) [NCV571SN09T1G](#) [NCV317MBTG](#) [MC78M15CDTT5G](#)
[MC78M12CDTT5G](#) [L9468N](#)