



**ELECTRONICS, INC.**  
 44 FARRAND STREET  
 BLOOMFIELD, NJ 07003  
 (973) 748-5089

## NTE214 Silicon NPN Transistor Darlington Driver

**Description:**

The NTE214 is a silicon NPN Darlington transistor in a TO3P type package. Typical applications include motor drivers, printer hammer drivers, relay drivers, regulated DC power supply controllers.

**Features:**

- High DC Current Gain
- Large Current Capacity and Wide ASO
- Low Saturation Voltage

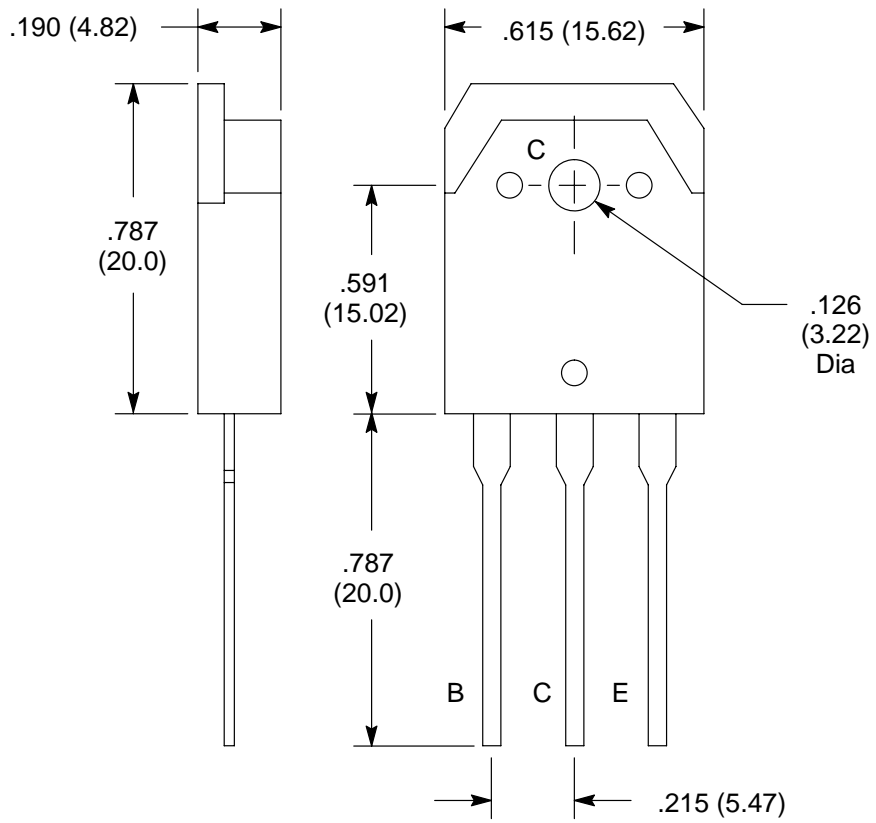
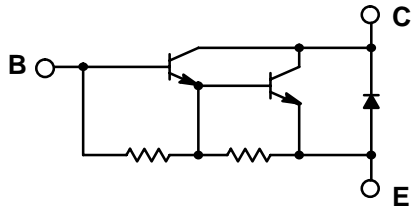
**Absolute Maximum Ratings:** ( $T_A = +25^\circ\text{C}$  unless otherwise specified)

Collector to Base Voltage, $V_{CBO}$ .....	70V
Collector to Emitter Voltage, $V_{CEO}$ .....	60V
Emitter to Base Voltage, $V_{EBO}$ .....	6V
Collector Current, $I_C$	
Continuous .....	10A
Peak .....	15A
Collector Dissipation ( $T_A = +25^\circ\text{C}$ ), $P_C$ .....	2.5W
Collector Dissipation ( $T_C = +25^\circ\text{C}$ ), $P_C$ .....	60W
Operating Junction Temperature, $T_J$ .....	+150°C
Storage Temperature Range, $T_{stg}$ .....	-55° to +150°C

**Electrical Characteristics:** ( $T_A = +25^\circ\text{C}$  unless otherwise specified)

Parameter	Symbol	Test Conditions	Min	Typ	Max	Unit
Collector Cutoff Current	$I_{CBO}$	$V_{CB} = 40V, I_E = 0$	-	-	0.1	mA
Emitter Cutoff Current	$I_{EBO}$	$V_{EB} = 5V, I_C = 0$	-	-	3.0	mA
DC Current Gain	$h_{FE}$	$V_{CE} = 2V, I_C = 5A$	2000	5000	-	
Current Gain–Bandwidth Product	$f_T$	$V_{CE} = 5V, I_C = 5A$	-	20	-	MHz
Collector–Emitter Saturation Voltage	$V_{CE(sat)}$	$I_C = 5A, I_B = 10mA$	-	0.9	1.5	V
Base–Emitter Saturation Voltage	$V_{BE(sat)}$	$I_C = 5A, I_B = 10mA$	-	-	2.0	V
Collector–Base Breakdown Voltage	$V_{(BR)CBO}$	$I_C = 5mA, I_E = 0$	70	-	-	V
Collector–Emitter Breakdown Voltage	$V_{(BR)CEO}$	$I_C = 50mA, R_{BE} = \infty$	60	-	-	V
Turn–On Time	$t_{on}$	$V_{CC} = 20V, V_{BE} = -5V,$ $500I_{B1} = -500I_{B2} = I_C = 5A,$ $PW = 50\mu s, \text{Duty Cycle} \leq 1\%$	-	0.6	-	$\mu s$
Storage Time	$t_{stg}$		-	3.0	-	$\mu s$
Fall Time	$t_f$		-	1.8	-	$\mu s$

### Schematic Diagram



## X-ON Electronics

Largest Supplier of Electrical and Electronic Components

*Click to view similar products for [Darlington Transistors](#) category:*

*Click to view products by [NTE manufacturer](#):*

Other Similar products are found below :

[281287X](#) [SMMBT6427LT1G](#) [2N7371](#) [BDV64B](#) [JANTXV2N6287](#) [028710A](#) [SMMBTA64LT1G](#) [2N6350](#) [2SB1214-TL-E](#)  
[SMMBTA14LT1G](#) [SBSP52T1G](#) [NJVMJD117T4G](#) [Jantx2N6058](#) [2N6353](#) [LB1205-L-E](#) [500-00005](#) [2N6053](#) [NJVMJD112G](#) [Jan2N6350](#)  
[Jantx2N6352](#) [Jantx2N6350](#) [BULN2803LVS](#) [ULN2001N](#) [2SB1383](#) [2SB1560](#) [2SB852KT146B](#) [TIP112TU](#) [TIP122TU](#) [BCV27](#) [MMBTA13-](#)  
[TP](#) [MMBTA14-TP](#) [MMSTA28T146](#) [BSP50H6327XTSA1](#) [KSH122TF](#) [NTE2557](#) [NJVNJD35N04T4G](#) [TIP115](#) [MPSA29-D26Z](#) [MJD127T4](#)  
[FJB102TM](#) [BCV26E6327HTSA1](#) [BCV46E6327HTSA1](#) [BCV47E6327HTSA1](#) [BSP61H6327XTSA1](#) [BU941ZPFI](#) [2SB1316TL](#) [2SD1980TL](#)  
[NTE2350](#) [NTE245](#) [NTE246](#)