



ELECTRONICS, INC.
 44 FARRAND STREET
 BLOOMFIELD, NJ 07003
 (973) 748-5089

NTE215 Silicon NPN Transistor Darlington Driver

Description:

The NTE215 is a silicon NPN Darlington transistor in a TO3P type package. Typical applications include motor drivers, printer hammer drivers, relay drivers, regulated DC power supply controllers.

Features:

- High DC Current Gain
- Large Current Capacity and Wide ASO
- Low Saturation Voltage

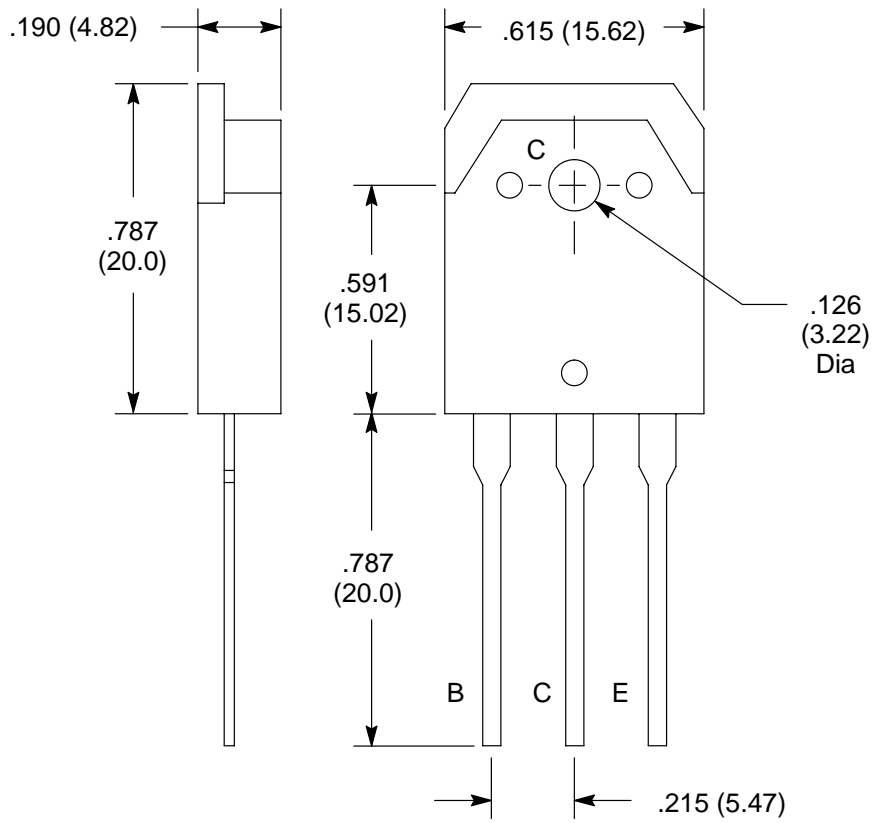
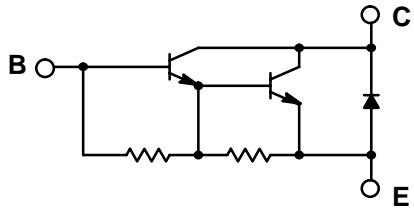
Absolute Maximum Ratings: ($T_A = +25^\circ\text{C}$ unless otherwise specified)

Collector to Base Voltage, V_{CBO}	110V
Collector to Emitter Voltage, V_{CEO}	100V
Emitter to Base Voltage, V_{EBO}	6V
Collector Current, I_C	
Continuous	8A
Peak	12A
Collector Dissipation ($T_A = +25^\circ\text{C}$), P_C	2.5W
Collector Dissipation ($T_C = +25^\circ\text{C}$), P_C	60W
Operating Junction Temperature, T_J	+150°C
Storage Temperature Range, T_{stg}	-55° to +150°C

Electrical Characteristics: ($T_A = +25^\circ\text{C}$ unless otherwise specified)

Parameter	Symbol	Test Conditions	Min	Typ	Max	Unit
Collector Cutoff Current	I_{CBO}	$V_{CB} = 80V, I_E = 0$	-	-	0.1	mA
Emitter Cutoff Current	I_{EBO}	$V_{EB} = 5V, I_C = 0$	-	-	3.0	mA
DC Current Gain	h_{FE}	$V_{CE} = 3V, I_C = 4A$	1500	4000	-	
Current Gain–Bandwidth Product	f_T	$V_{CE} = 5V, I_C = 4A$	-	20	-	MHz
Collector–Emitter Saturation Voltage	$V_{CE(sat)}$	$I_C = 4A, I_B = 8mA$	-	0.9	1.5	V
Base–Emitter Saturation Voltage	$V_{BE(sat)}$	$I_C = 4A, I_B = 8mA$	-	-	2.0	V
Collector–Base Breakdown Voltage	$V_{(BR)CBO}$	$I_C = 5mA, I_E = 0$	110	-	-	V
Collector–Emitter Breakdown Voltage	$V_{(BR)CEO}$	$I_C = 50mA, R_{BE} = \infty$	100	-	-	V
Turn–On Time	t_{on}	$V_{CC} = 50V, V_{BE} = -5V,$ $500I_{B1} = -500I_{B2} = I_C = 4A,$ $PW = 50\mu s, \text{Duty Cycle} \leq 1\%$	-	0.6	-	μs
Storage Time	t_{stg}		-	4.8	-	μs
Fall Time	t_f		-	1.6	-	μs

Schematic Diagram



X-ON Electronics

Largest Supplier of Electrical and Electronic Components

Click to view similar products for [Darlington Transistors](#) category:

Click to view products by [NTE manufacturer](#):

Other Similar products are found below :

[281287X](#) [SMMBT6427LT1G](#) [2N7371](#) [BDV64B](#) [JANTXV2N6287](#) [028710A](#) [SMMBTA64LT1G](#) [2N6350](#) [2SB1214-TL-E](#)
[SMMBTA14LT1G](#) [SBSP52T1G](#) [NJVMJD117T4G](#) [Jantx2N6058](#) [2N6353](#) [LB1205-L-E](#) [500-00005](#) [2N6053](#) [NJVMJD112G](#) [Jan2N6350](#)
[Jantx2N6352](#) [Jantx2N6350](#) [BULN2803LVS](#) [ULN2001N](#) [2SB1383](#) [2SB1560](#) [2SB852KT146B](#) [TIP112TU](#) [TIP122TU](#) [BCV27](#) [MMBTA13-](#)
[TP](#) [MMBTA14-TP](#) [MMSTA28T146](#) [BSP50H6327XTSA1](#) [KSH122TF](#) [NTE2557](#) [NJVNJD35N04T4G](#) [TIP115](#) [MPSA29-D26Z](#) [MJD127T4](#)
[FJB102TM](#) [BCV26E6327HTSA1](#) [BCV46E6327HTSA1](#) [BCV47E6327HTSA1](#) [BSP61H6327XTSA1](#) [BU941ZPFI](#) [2SB1316TL](#) [2SD1980TL](#)
[NTE2350](#) [NTE245](#) [NTE246](#)