



**ELECTRONICS, INC.**  
 44 FARRAND STREET  
 BLOOMFIELD, NJ 07003  
 (973) 748-5089

## NTE2557 Silicon NPN Transistor Darlington, High Voltage Switch, Power Amp

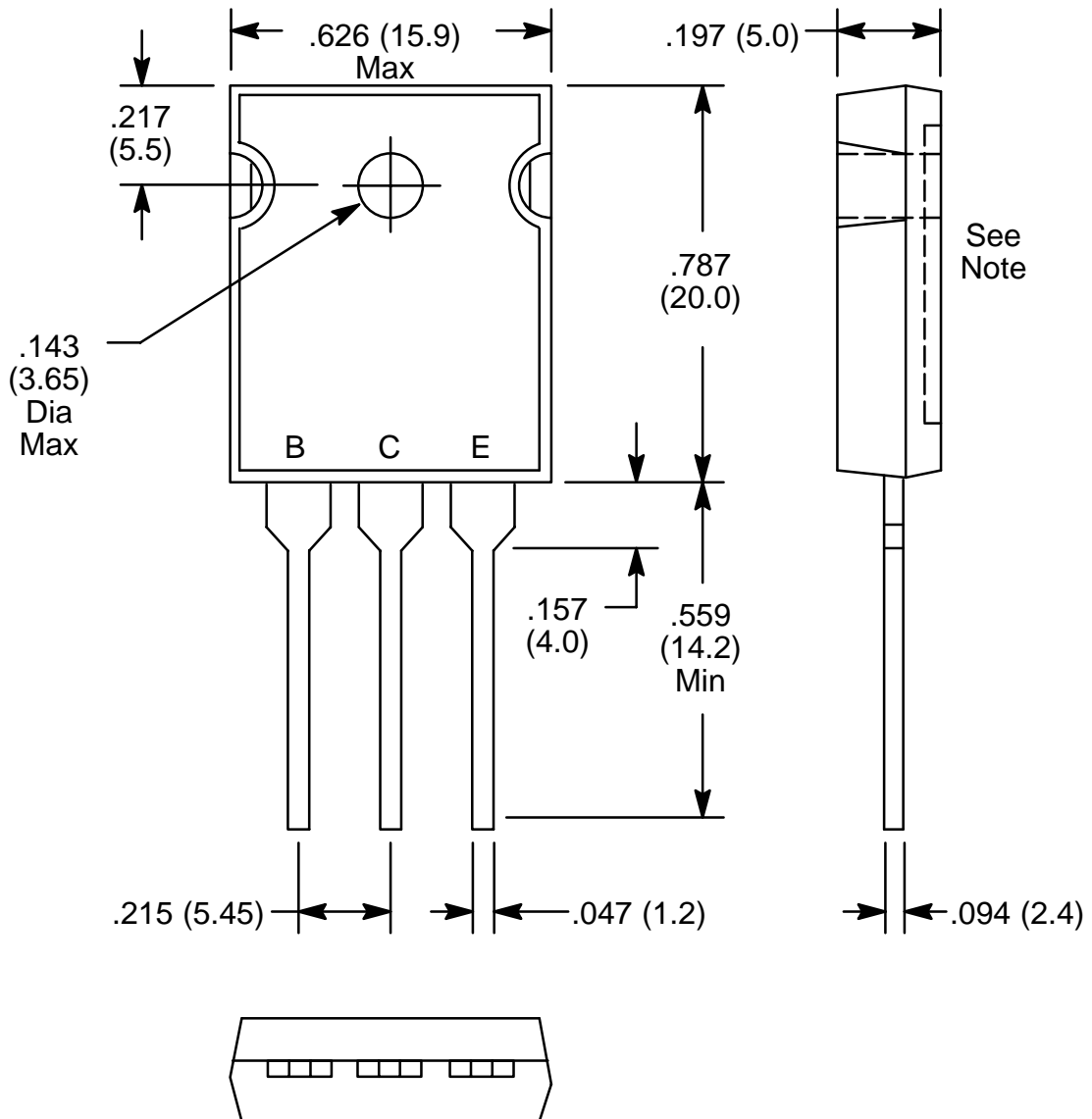
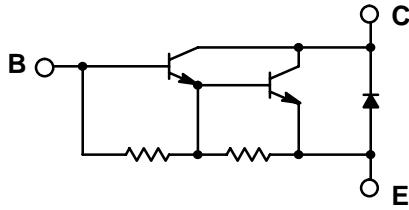
**Absolute Maximum Ratings:**

Collector–Base Voltage, $V_{CBO}$ .....	200V
Collector–Emitter Voltage, $V_{CEO}$ .....	200V
Emitter–Base Voltage, $V_{EBO}$ .....	7V
Collector Current, $I_C$	
Continuous .....	15A
Peak .....	22A
Base Current, $I_B$	
Continuous .....	1A
Peak .....	2A
Total Transistor Dissipation ( $T_C = +25^\circ\text{C}$ ), $P_T$ .....	100W
Operating Junction Temperature, $T_J$ .....	+150°C
Storage Temperature Range, $T_{stg}$ .....	–55° to +150°C
Thermal Resistance, Junction–to–Case, $R_{thJC}$ .....	1.25°C/W

**Electrical Characteristics:** ( $T_C = +25^\circ\text{C}$  unless otherwise specified)

Parameter	Symbol	Test Conditions	Min	Typ	Max	Unit
Collector Cutoff Current	$I_{CBO}$	$V_{CB} = 200V$	–	–	0.1	mA
	$I_{CEO}$	$V_{CE} = 200V$	–	–	0.1	mA
Emitter Cutoff Current	$I_{EBO}$	$V_{EB} = 7V$	–	–	5.0	mA
DC Current Gain	$h_{FE}$	$V_{CE} = 3V, I_C = 10A$	1500	–	30000	
Transistion Frequency	$f_T$	$V_{CE} = 10V, I_C = 1.5A$	–	20	–	MHz
Collector–Emitter Saturation Voltage	$V_{CE(sat)}$	$I_C = 10A, I_B = 30mA$	–	–	1.5	V
Base–Emitter Saturation Voltage	$V_{BE(sat)}$	$I_C = 10A, I_B = 30mA$	–	–	2.0	V
Turn–On Time	$t_{on}$	$I_{B1} = I_{B2} = 30mA,$ $I_C = 10A, R_L = 3\Omega,$ $V_{BB2} = 4V$	–	–	2	$\mu s$
Storage Time	$t_{stg}$		–	–	8	$\mu s$
Fall Time	$t_f$		–	–	5	$\mu s$

NPN



**Note:** Pin2 connected to metal part of mounting surface.

## X-ON Electronics

Largest Supplier of Electrical and Electronic Components

*Click to view similar products for [Darlington Transistors](#) category:*

*Click to view products by [NTE manufacturer](#):*

Other Similar products are found below :

[281287X](#) [SMMBT6427LT1G](#) [2N7371](#) [BDV64B](#) [JANTXV2N6287](#) [028710A](#) [SMMBTA64LT1G](#) [2N6350](#) [2SB1214-TL-E](#)  
[SMMBTA14LT1G](#) [SBSP52T1G](#) [NJVMJD117T4G](#) [Jantx2N6058](#) [2N6353](#) [LB1205-L-E](#) [500-00005](#) [2N6053](#) [NJVMJD112G](#) [Jan2N6350](#)  
[Jantx2N6352](#) [Jantx2N6350](#) [BULN2803LVS](#) [ULN2001N](#) [2SB1383](#) [2SB1560](#) [2SB852KT146B](#) [TIP112TU](#) [TIP122TU](#) [BCV27](#) [MMBTA13-](#)  
[TP](#) [MMBTA14-TP](#) [MMSTA28T146](#) [BSP50H6327XTSA1](#) [KSH122TF](#) [NTE2557](#) [NJVNJD35N04T4G](#) [TIP115](#) [MPSA29-D26Z](#) [MJD127T4](#)  
[FJB102TM](#) [BCV26E6327HTSA1](#) [BCV46E6327HTSA1](#) [BCV47E6327HTSA1](#) [BSP61H6327XTSA1](#) [BU941ZPFI](#) [2SB1316TL](#) [2SD1980TL](#)  
[NTE2350](#) [NTE245](#) [NTE246](#)