



ELECTRONICS, INC.
 44 FARRAND STREET
 BLOOMFIELD, NJ 07003
 (973) 748-5089
<http://www.nteinc.com>

NTE2682 (NPN) & NTE2683 (PNP) Silicon Complementary Darlington Transistors Audio Power Output TO3PL Type Package

Features:

- High Forward Current Transfer Ratio, h_{FE}
- Low Collector–Emitter Saturation Voltage, $V_{CE(sat)}$
- Optimum for 120W HiFi Output Applications

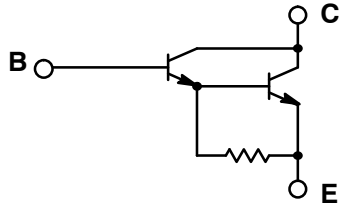
Absolute Maximum Ratings: ($T_C = +25^\circ\text{C}$ unless otherwise specified)

Collector–Base Voltage, V_{CBO}	160V
Collector–Emitter Voltage, V_{CEO}	160V
Emitter–Base Voltage, V_{EBO}	5V
Collector Current, I_C	
Continuous	8A
Peak	15A
Collector Power Dissipation, P_D	
$T_C = +25^\circ\text{C}$	150W
$T_A = +25^\circ\text{C}$	3.5W
Operating Junction Temperature, T_J	$+150^\circ\text{C}$
Storage Temperature Range, T_{stg}	-55° to $+150^\circ\text{C}$

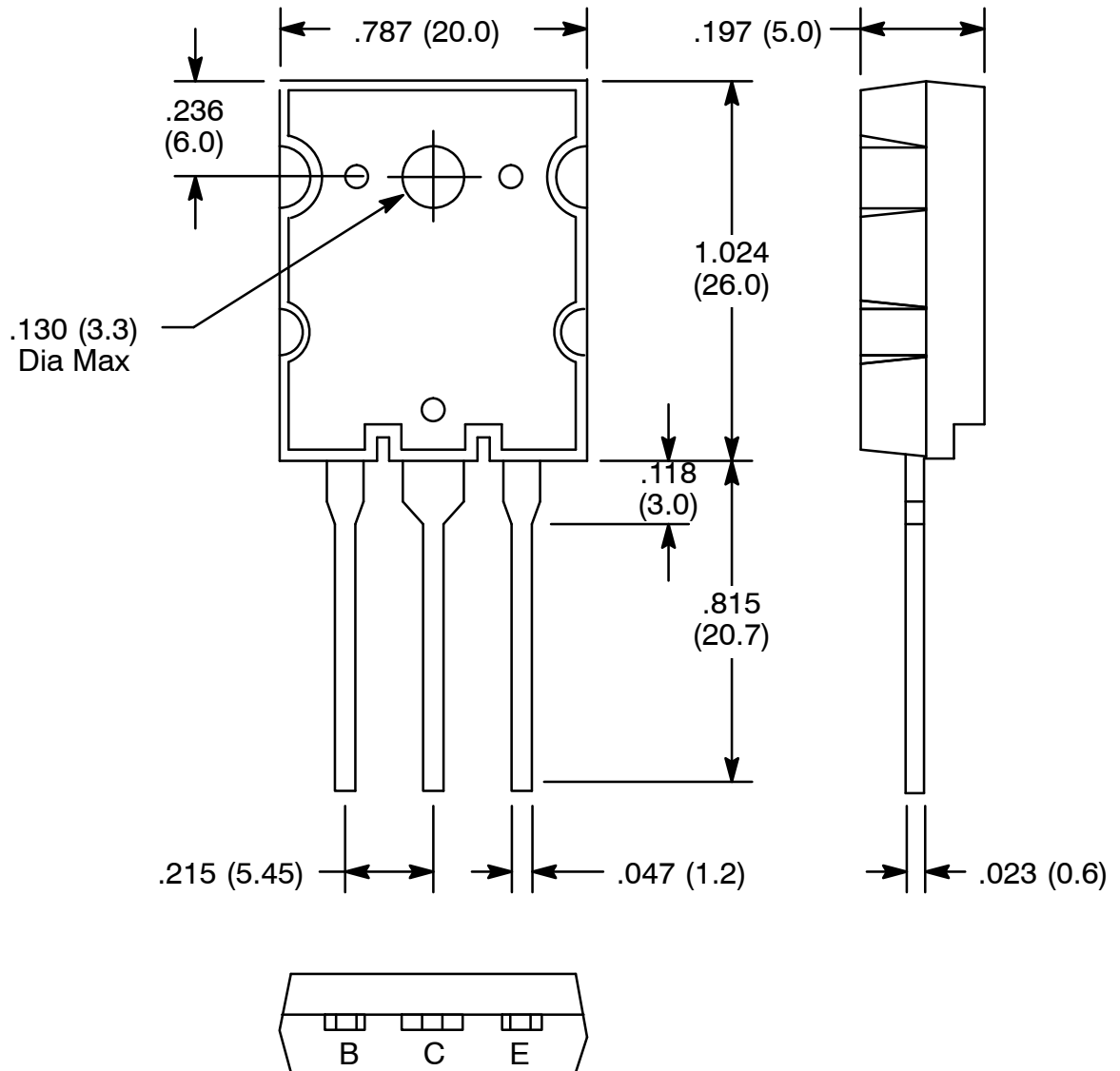
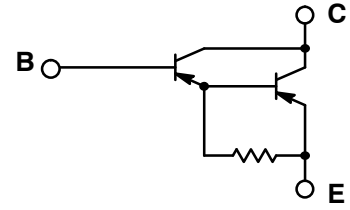
Electrical Characteristics: ($T_C = +25^\circ\text{C}$ unless otherwise specified)

Parameter	Symbol	Test Conditions	Min	Typ	Max	Unit
Collector–Emitter Voltage	V_{CEO}	$I_C = 30\text{mA}, I_B = 0$	160	–	–	V
Collector–Base Cutoff Current	I_{CBO}	$V_{CB} = 160\text{V}, I_E = 0$	–	–	100	$^\circ\text{A}$
Emitter–Emitter Cutoff Current	I_{CEO}	$V_{CE} = 160\text{V}, I_B = 0$	–	–	100	$^\circ\text{A}$
Emitter–Base Cutoff Current	I_{EBO}	$V_{EB} = 5\text{V}, I_C = 0$	–	–	100	$^\circ\text{A}$
Forward Current Transfer Ratio	h_{FE}	$V_{CE} = 5\text{V}, I_C = 1\text{A}$	1000	–	–	
		$V_{CE} = 5\text{V}, I_C = 7\text{A}$	3500	–	20000	
Collector–Emitter Saturation Voltage	$V_{CE(sat)}$	$I_C = 7\text{A}, I_B = 7\text{mA}$	–	–	3.0	V
Transition Frequency	f_T	$V_{CE} = 10\text{V}, I_C = 0.5\text{A}, f = 30\text{MHz}$	–	20	–	MHz
Turn–On Time NTE2682	t_{on}	$I_C = 7\text{A}, I_{B1} = -I_{B1} = 7\text{mA},$ $V_{CC} = 50\text{V}$	–	2.0	–	$^\circ\text{s}$
			–	1.0	–	$^\circ\text{s}$
Storage Time NTE2682	t_{stg}		–	6.0	–	$^\circ\text{s}$
			–	1.5	–	$^\circ\text{s}$
Fall Time	t_f		–	1.2	–	$^\circ\text{s}$
			–	1.2	–	$^\circ\text{s}$

NTE2682



NTE2683



X-ON Electronics

Largest Supplier of Electrical and Electronic Components

Click to view similar products for [Darlington Transistors](#) category:

Click to view products by [NTE manufacturer](#):

Other Similar products are found below :

[281287X](#) [SMMBT6427LT1G](#) [2N7371](#) [BDV64B](#) [JANTXV2N6287](#) [028710A](#) [SMMBTA64LT1G](#) [2N6350](#) [2SB1214-TL-E](#)
[SMMBTA14LT1G](#) [SBSP52T1G](#) [NJVMJD117T4G](#) [Jantx2N6058](#) [2N6353](#) [LB1205-L-E](#) [500-00005](#) [2N6053](#) [NJVMJD112G](#) [Jan2N6350](#)
[Jantx2N6352](#) [Jantx2N6350](#) [BULN2803LVS](#) [ULN2001N](#) [2SB1383](#) [2SB1560](#) [2SB852KT146B](#) [TIP112TU](#) [TIP122TU](#) [BCV27](#) [MMBTA13-](#)
[TP](#) [MMBTA14-TP](#) [MMSTA28T146](#) [BSP50H6327XTSA1](#) [KSH122TF](#) [NTE2557](#) [NJVNJD35N04T4G](#) [TIP115](#) [MPSA29-D26Z](#) [MJD127T4](#)
[FJB102TM](#) [BCV26E6327HTSA1](#) [BCV46E6327HTSA1](#) [BCV47E6327HTSA1](#) [BSP61H6327XTSA1](#) [BU941ZPFI](#) [2SB1316TL](#) [2SD1980TL](#)
[NTE2350](#) [NTE245](#) [NTE246](#)