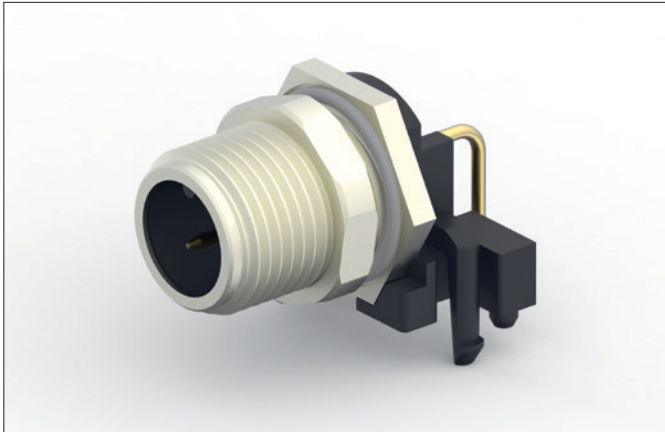


## M8/M12 Panel Mount and PCB Connectors



TE Connectivity (TE)'s M8/M12 Panel Mount connectors are designed for safe and reliable communication. With a broad portfolio and many configurations, the M8/M12 Panel mount product range offers maximum design flexibility and cost-efficiency. For PCB boards.

As part of TE Connectivity's extensive range of connectors, the M8/M12 connector system helps to establish safe, reliable and efficient communication in nearly all industrial environments.

### KEY FEATURES

- Right angle connector
- IP67 rated for harsh industrial environments
- Available in male and female
- Available in shielded and unshielded versions
- Gold plated
- 2-5 pos.
- A/B/D code

### BENEFITS

- Maximum design flexibility for PCBs: broad portfolio and many configurations
- Cost-effective: ruggedized for use in harsh industrial environments
- Short lead-times: accelerate your Go-To-Market time
- Time-saving: field-installable
- Performance-enhancing: extending the lifetime and durability of equipment

### APPLICATIONS

- Industrial automation
- Automobile manufacturing
- Machine tools
- Semiconductor manufacturing
- Factory automation machines
- Manufacturing of solenoid and sensor valves
- Vision systems

### ELECTRICAL

- IEC61076-2-101
- IEC61076-2-104

### MECHANICAL

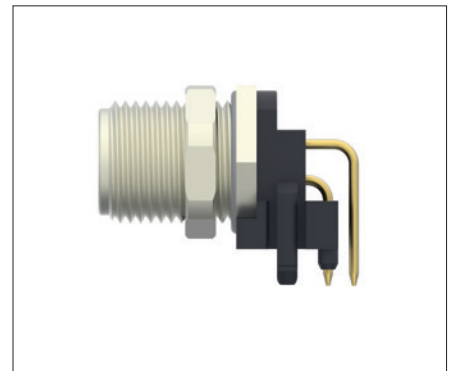
- IEC61076-2-101
- IEC61076-2-104

### STANDARDS & SPECIFICATIONS

- IEC61076-2-101
- IEC61076-2-104

### PRODUCT COMPLIANCE/APPROVALS

- RoHS
- REACH



## M8/M12 Panel Mount and PCB Connectors

### ORDERING INFORMATION - M8 CONNECTORS

Description	TE PN
M8.FMLE.PNLREAR.3POS.STR PCB	<a href="#">T4041017031-000</a>
M8.MLE.PNLREAR.3POS.STR WIRE	<a href="#">T4070014031-001</a>
M8.MLE.PNLFRONT.3POS.STR	<a href="#">T4032014031-000</a>
M8.FMLE.PNLFRONT.4POS.STR	<a href="#">T4033014041-000</a>
M8.MLE.PNLREAR.4POS.STR PCBSHLD	<a href="#">T4040034041-000</a>
M8.FMLE.PNLREAR.3POS.STR PCBSHLD	<a href="#">T4041037031-000</a>
M8.MLE.PNLREAR.4POS.STR WIRE	<a href="#">T4070014041-001</a>
M8.FMLE.PNLFRONT.3POS.STR WIRE	<a href="#">T4073014031-001</a>
M8.MLE.PNLREAR.3POS.STR PCBSHLD	<a href="#">T4040034031-000</a>
M8.FMLE.PNLREAR.4POS.STR PCBSHLD	<a href="#">T4041037041-000</a>
M8.MLE.PNLFRONT.4POS.STR.PCB	<a href="#">T4042014041-000</a>
M8.FMLE.PNLREAR.3POS.STR WIRE	<a href="#">T4071017031-001</a>
M8.FMLE.PNLREAR.3POS.STR	<a href="#">T4031017031-000</a>
M8.MLE.PNLFRONT.4POS.STR.	<a href="#">T4032014041-000</a>
M8 Y DISTRIBUTOR MALE 4POS	<a href="#">T4081122004-000</a>
M8 T DISTRIBUTOR MALE 4POS	<a href="#">T4082102004-000</a>
M8 T DISTRIBUTOR MALE 3POS	<a href="#">T4082102003-000</a>
M8 Y DISTRIBUTOR MALE 3POS	<a href="#">T408112003-000</a>

Description	TE PN
M8.MLE.PNLFRONT.3POS.STR PCB	<a href="#">T4042014031-000</a>
M8.FMLE.PNLREAR.4POS.STR PCB	<a href="#">T4041017041-000</a>
M8.FMLE.PNLFRONT.4POS.STRPCB	<a href="#">T4043014041-000</a>
M8.MLE.PNLFRONT.4POS.STR WIRE	<a href="#">T4072014041-001</a>
M8.MLE.PNLREAR.3POS.STR	<a href="#">T4030014031-000</a>
M8.MLE.PNLREAR.4POS.STR.	<a href="#">T4030014041-000</a>
M8.FMLE.PNLFRONT.3POS.STRPCB	<a href="#">T4043014031-000</a>
M8.FMLE.PNLFRONT.4POS.STR WIRE	<a href="#">T4073014041-001</a>
M8.FMLE.PNLREAR.4POS.STR	<a href="#">T4031017041-000</a>
M8.FMLE.PNLFRONT.3POS.STR	<a href="#">T4033014031-000</a>
M8.FMLE.PNLREAR.4POS.STR WIRE	<a href="#">T4071017041-001</a>
M8.MLE.PNLREAR.3POS.STR PCB	<a href="#">T4040014031-000</a>
M8.MLE.PNLREAR.4POS.STR PCB	<a href="#">T4040014041-000</a>
M8.MLE.PNLFRONT.3POS.STR WIRE	<a href="#">T4072014031-001</a>

Please visit [te.com](https://www.te.com) to explore our complete M8/M12 Panel Mount and PCB Connector portfolio.

### ORDERING INFORMATION - M12 CONNECTORS

Description	TE PN
M12,REAR MOUNT,MALE,A,4P,SOLDER WIRE	<a href="#">T4130012041-000</a>
M12,REAR MOUNT,MALE,A,5P,SOLDER WIRE	<a href="#">T4130012051-000</a>
M12,REAR MOUNT,MALE,B,5P,SOLDER WIRE	<a href="#">T4130412051-000</a>
M12,REAR MOUNT,MALE,D,4P,SOLDER WIRE	<a href="#">T4130512041-000</a>
M12,REAR MOUNT,FEMALE,A,4P,SOLDER WIRE	<a href="#">T4131012041-000</a>
M12,REAR MOUNT,FEMALE,A,5P,SOLDER WIRE	<a href="#">T4131012051-000</a>
M12,REAR MOUNT,FEMALE,B,5P,SOLDER WIRE	<a href="#">T4131412051-000</a>
M12,REAR MOUNT,FEMALE,D,4P,SOLDER WIRE	<a href="#">T4131512041-000</a>
M12,REAR MOUNTING,MALE,A CODE,4P	<a href="#">T4140012041-000</a>
M12,REAR MOUNTING,MALE,A CODE,5P	<a href="#">T4140012051-000</a>
M12,REAR MOUNTING,MALE,B CODE,5P	<a href="#">T4140412051-000</a>

Description	TE PN
M12 R/A F PNLREAR STAMPED PIN A-CODE 4P	<a href="#">T4145015041-001</a>
M12 R/A F PNLREAR STAMPED PIN A-CODE 5P	<a href="#">T4145015051-001</a>
M12 R/A F PNLREAR STAMPED PIN B-CODE 5P	<a href="#">T4145415051-001</a>
M12 R/A F PNL STAMPED PIN D-CODE 4P SHLD	<a href="#">T4145535041-001</a>
M12,REAR MOUNTING,MALE,A,4P,0.2M WIRE	<a href="#">T4171010004-001</a>
M12,REAR MOUNTING,MALE,A,4P,0.5M WIRE	<a href="#">T4171010004-002</a>
M12,REAR MOUNTING,MALE,A,5P,0.2M WIRE	<a href="#">T4171010005-001</a>
M12,REAR MOUNTING,MALE,A,5P,0.5M WIRE	<a href="#">T4171010005-002</a>
M12,REAR MOUNTING,MALE,B,5P,0.2M WIRE	<a href="#">T4171010405-001</a>
M12,REAR MOUNTING,MALE,B,5P,0.5M WIRE	<a href="#">T4171010405-002</a>
M12,REAR MOUNTING,MALE,D,4P,0.2M WIRE	<a href="#">T4171010504-001</a>

# M8/M12 Panel Mount and PCB Connectors

## ORDERING INFORMATION - M12 CONNECTORS (CONTINUED)

Description	TE PN
M12,REAR MOUNTING,MALE,D CODE,4P	<a href="#">T4140512041-000</a>
M12,REAR MOUNTING,FEMALE,A CODE,4P	<a href="#">T4141012041-000</a>
M12,REAR MOUNTING,FEMALE,A CODE,5P	<a href="#">T4141012051-000</a>
M12,REAR MOUNTING,FEMALE,B CODE,5P	<a href="#">T4141412051-000</a>
M12,REAR MOUNTING,FEMALE,D CODE,4P	<a href="#">T4141512041-000</a>

Description	TE PN
M12,REAR MOUNTING,MALE,D,4P,0.5M WIRE	<a href="#">T4171010504-002</a>
M12,REAR MOUNTING,FEMALE,A,4P,0.2M WIRE	<a href="#">T4171110004-001</a>
M12,REAR MOUNTING,FEMALE,A,4P,0.5M WIRE	<a href="#">T4171110004-002</a>
M12,REAR MOUNTING,FEMALE,A,5P,0.2M WIRE	<a href="#">T4171110005-001</a>
M12,REAR MOUNTING,FEMALE,A,5P,0.5M WIRE	<a href="#">T4171110005-002</a>
M12,REAR MOUNTING,FEMALE,B,5P,0.2M WIRE	<a href="#">T4171110405-001</a>
M12,REAR MOUNTING,FEMALE,B,5P,0.5M WIRE	<a href="#">T4171110405-002</a>
M12,REAR MOUNTING,FEMALE,D,4P,0.2M WIRE	<a href="#">T4171110504-001</a>
M12,REAR MOUNTING,FEMALE,D,4P,0.5M WIRE	<a href="#">T4171110504-002</a>

Please visit [te.com](http://te.com) to explore our complete M8/M12 Panel Mount and PCB Connector portfolio.

### te.com/m8m12

TE Connectivity, TE Connectivity (logo) and Every Connection Counts are trademarks. All other logos, products and/or company names referred to herein might be trademarks of their respective owners.

The information given herein, including drawings, illustrations and schematics which are intended for illustration purposes only, is believed to be reliable. However, TE Connectivity makes no warranties as to its accuracy or completeness and disclaims any liability in connection with its use. TE Connectivity's obligations shall only be as set forth in TE Connectivity's Standard Terms and Conditions of Sale for this product and in no case will TE Connectivity be liable for any incidental, indirect or consequential damages arising out of the sale, resale, use or misuse of the product. Users of TE Connectivity products should make their own evaluation to determine the suitability of each such product for the specific application.

© 2017 TE Connectivity Ltd. family of companies All Rights Reserved.

1-1773936-9 09/2017 Original: WR

### PRODUCT SHEET

#### TE Connectivity Automation & Control

Pfnorstr. 1  
D-64293 Darmstadt  
Germany

+49 6151 607 1999

[www.te.com](http://www.te.com)

LEGAL ENTITY

## X-ON Electronics

Largest Supplier of Electrical and Electronic Components

*Click to view similar products for [Circular Metric Connectors](#) category:*

*Click to view products by [TE Connectivity](#) manufacturer:*

Other Similar products are found below :

[1424048](#) [1021212](#) [600X518037X](#) [6STD09SAM99B70X](#) [6STD15PCR99B70A](#) [8R4000A16M020](#) [1200910002](#) [1201150041](#) [1203580030](#)  
[1200700064](#) [1200700263](#) [1200700416](#) [1200730102](#) [1200770002](#) [1-2823588-2](#) [130203-0054](#) [1300140026](#) [1300150099](#) [1-3637-600-5205](#)  
[1545399](#) [1594331](#) [1600413](#) [1612606](#) [1612618](#) [1614660](#) [1A4000-348](#) [CA06EW24-10P-B-03](#) [21036836414](#) [2823064-1](#) [1610759](#) [A1642LK-](#)  
[II-T](#) [1R3006A20M005](#) [41-01016](#) [41-40011](#) [41-40017](#) [42-00006](#) [42-01015](#) [4-22279-4](#) [4-22281-1](#) [4-22284-9](#) [43-00002](#) [43-00113](#) [43-00130](#)  
[43-01028](#) [43-01034](#) [43-01088](#) [43-01090](#) [43-01203](#) [43-01209](#) [43-01335](#)