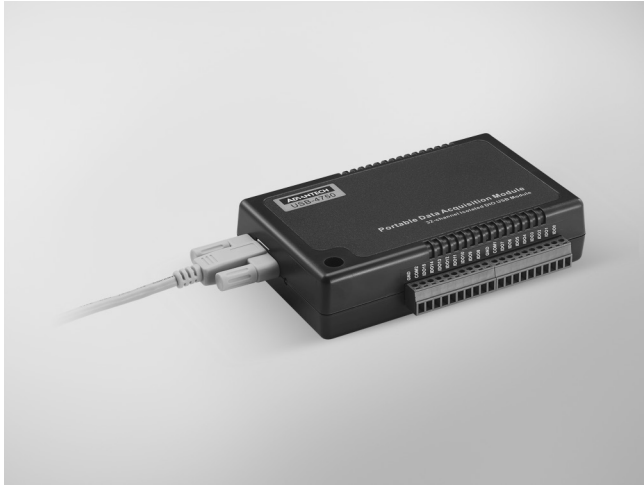


USB-4750

32-ch Isolated Digital I/O USB Module



CE FCC RoHS

Features

- Compatible with USB 1.1/2.0
- Bus-powered
- 16 isolated DI and 16 isolated DO channels
- High voltage isolation on all channels (2,500 V_{DC})
- High sink current on isolated output channels (200 mA/Channel)
- Supports 5 ~ 60 V_{DC} isolated input channels
- Interrupt handling capability
- Timer/counter capability
- Suitable for DIN-rail mounting
- One lockable USB cable for secure connection included

Introduction

The USB-4700 series consists of true plug & play data acquisition devices. No more opening up your computer chassis to install boards—just plug in the module, then get the data. It's easy to use and efficient. USB-4750 is a 32-channel isolated digital I/O module. With isolation protection of 2,500 V_{DC}, and dry contact support, USB-4750 is ideal for industrial applications where high-voltage protection is required. Each I/O channel of the USB-4750 corresponds to a bit in an I/O port. This makes USB-4750 very easy to program. This module also offers a counter or timer and one digital input interrupt to a PC so users can then easily configure by software.

Reliable and rugged enough for industrial applications, yet affordable for home projects, the USB-4750 is the perfect way to add measurement and control capability to any USB capable computer. The USB-4750 is fully compatible with USB plug & play and easy to use. It obtains all required power from the USB port, so no external power connection is ever required.

Specifications

Isolated Digital Input

- **Channels** 16
- **Input Voltage** Logic 0: 2 V max.
Logic 1: 5 V min. (60 V max.) or dry contact
- **Interrupt Capable Ch.** 2
- **Isolation Protection** 2,500 V_{DC}

Isolated Digital Output

- **Channels** 16
- **Output Type** Sink (NPN)
- **Isolation Protection** 2,500 V_{DC}
- **Output Voltage** 5 ~ 40 V_{DC}
- **Sink Current** 200 mA max. per channel
Total 1.1 A max.

Isolated Counter

- **Channels** 2
- **Resolution** 32-bit
- **Max. Input Frequency** 1 MHz
- **Isolation Protection** 2,500 V_{DC}

General

- **Bus Type** USB 1.1/2.0
- **I/O Connector** Onboard screw terminal
- **Dimensions (L x W x H)** 132 x 80 x 32 mm (5.2" x 3.15" x 1.26")
- **Power Consumption** Typical: 5 V @ 200 mA
Max.: 5 V @ 350 mA
- **Operating Temperature** 0 ~ 60°C (32 ~ 140°F)
- **Storage Temperature** -20 ~ 70°C (-4 ~ 158°F)
- **Storage Humidity** 5 ~ 95% RH, non-condensing

Ordering Information

- **USB-4750-BE** 32-ch Isolated Digital I/O USB Module

Accessories

- **1960004544** Wallmount Bracket
- **1960005788** VESA Mount Bracket

X-ON Electronics

Largest Supplier of Electrical and Electronic Components

Click to view similar products for [Data Logging & Acquisition](#) category:

Click to view products by [Advantech](#) manufacturer:

Other Similar products are found below :

[ND-6063](#) [PCI-9221](#) [PCIE-7248](#) [ND-6017](#) [PCI-7432HIR](#) [DAQe-2214](#) [PCI-9113A](#) [ND-6053](#) [ACL-8112PG](#) [cPCI-7433](#) [cPCI-6208V-GL](#)
[DAQe-2213](#) [ND-6056](#) [DAQ-2006](#) [DAQe-2502](#) [DAQ-2208](#) [PCIE-8560](#) [DAQe-2501](#) [PCI-7233](#) [PCM-7250+](#) [PCI-8124-C](#) [ND-6060](#) [DAQ-](#)
[2206](#) [PCM-7248+](#) [PCIE-7200](#) [PCIE-PXI-EXP-KIT](#) [PCIE-7256](#) [PCIE-1884-AE](#) [USB-4761-BE](#) [PCI-1761-BE](#) [PCI-1711UL-CE](#) [PCI-1762-BE](#)
[RHT30](#) [TH30](#) [USB-4702-AE](#) [USB-4704-AE](#) [USB-4711A-AE](#) [USB-4716-AE](#) [USB-4718-AE](#) [USB-4750-BE](#) [USB-4751-AE](#) [RHT35](#) [PCI-](#)
[1714U-BE](#) [PCIE-1810-AE](#) [LPCIE-7250](#) [USB-4751L-AE](#) [PCI-1760U-BE](#) [PCI-6216V-GL](#) [LPCIE-7230](#) [PCI-1742U-AE](#)