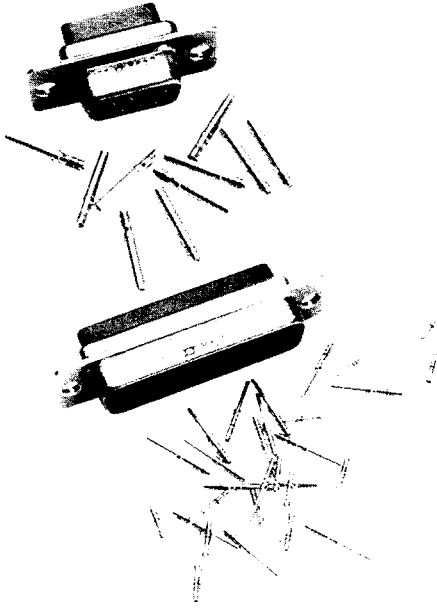


How to Order — Crimp Connectors (contacts are removable)



Receptacles (Includes Socket Contacts) With .120" Through-Mounting Holes

| Number of Contacts (Shell Size) | Standard | Military Version | M24308 Cross Reference |
|---------------------------------|----------|------------------|------------------------|
| 9 (E) | DEMA9S | DEMAM9S | M24308/2-1 |
| 15 (A) | DAMA15S | DAMAM15S | M24308/2-2 |
| 25 (B) | DBMA25S | DBMAM25S | M24308/2-3 |
| 37 (C) | DCMA37S | DCMAM37S | M24308/2-4 |
| 50 (D) | DDMA50S | DDMAM50S | M24308/2-5 |

Plugs (Includes Pin Contacts)* With .120" Through Mounting Holes

| Number of Contacts (Shell Size) | Standard | Military Version | M24308 Cross Reference |
|---------------------------------|----------|------------------|------------------------|
| 9 (E) | DEMA9P | DEMAM9P | M24308/4-1 |
| 15 (A) | DAMA15P | DAMAM15P | M24308/4-2 |
| 25 (B) | DBMA25P | DBMAM25P | M24308/4-3 |
| 37 (C) | DCMA37P | DCMAM37P | M24308/4-4 |
| 50 (D) | DDMA50P | DDMAM50P | M24308/4-5 |

To receive these connectors without contacts, add "FO" to end of part number.
 Example: DBMA25SF0, DBMAM25SF0.

NM Non-Magnetic/No-Outgas — Add desired suffix code with desired option to end of part number.

Example: DEMA9PSNMB
 DEMA9PSNMB-K52

Crimp Connectors without contacts, add FO to end of the part number and change K52 to K47.

Assembly Instructions — Page 363

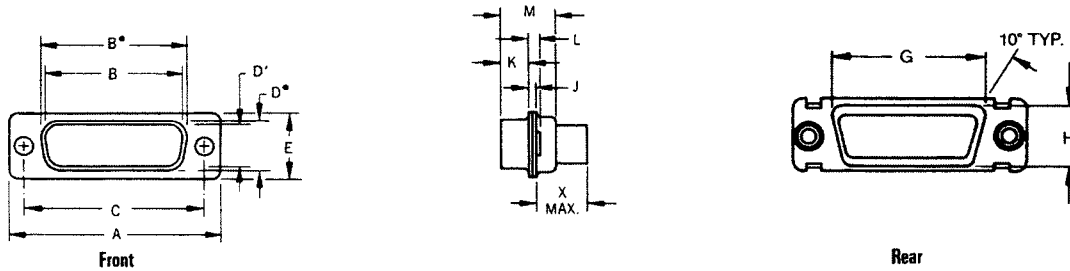
Performance Specifications — Page 332

Mounting Options Available:

4-40 Clinch Nut — Add "E" to Part Number After "M" or "A"
 4-40 Float Mount — Add "Y" to Part Number After "M" or "A"
 (Can be used in front or rear panel mount applications)

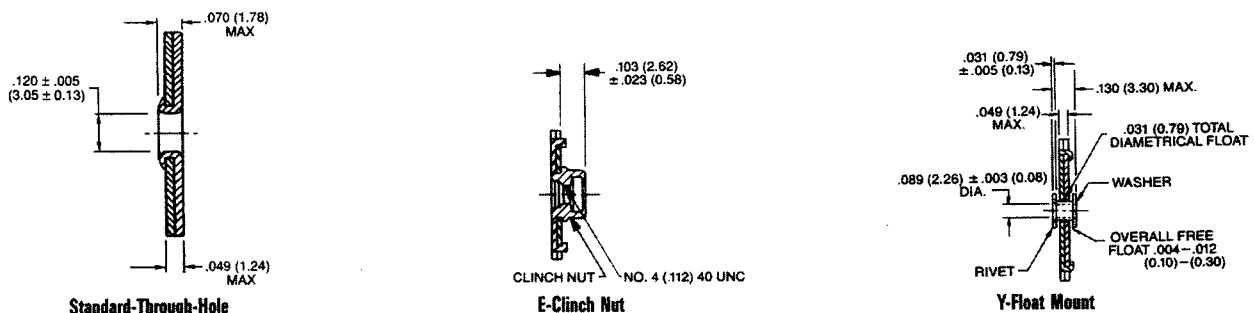
Example: DBMAE25S
 DBMAME25S
 DEMAY9P
 DEMAMY9P

Dimensions — Crimp Connectors



| Part Number by Shell Size | A | B | B' | C | D | D' | E | G | H | J | K | L | M | X Max |
|---------------------------|---------------|---------------|---------------|---------------|--------------|--------------|--------------|---------------|--------------|-------------|-------------|-------------|--------------|-------------|
| DEMA-9P | 1.213 (30.81) | — | .666 (16.91) | .984 (24.99) | — | .329 (8.36) | .494 (12.55) | .759 (19.28) | .422 (10.72) | .030 (0.76) | .235 (5.97) | .048 (1.22) | .422 (10.72) | .345 (8.76) |
| DEMA-9S | 1.213 (30.81) | .643 (16.33) | — | .984 (24.99) | .311 (7.90) | — | .494 (12.55) | .759 (19.28) | .422 (10.72) | .030 (0.76) | .243 (6.17) | .048 (1.22) | .429 (10.90) | .345 (8.76) |
| DAMA-15P | 1.541 (39.14) | — | .994 (25.24) | 1.312 (33.32) | — | .329 (8.36) | .494 (12.55) | 1.083 (27.51) | .422 (10.72) | .030 (0.76) | .235 (5.97) | .048 (1.22) | .422 (10.72) | .345 (8.76) |
| DAMA-15S | 1.541 (39.14) | .971 (24.66) | — | 1.312 (33.32) | .311 (7.90) | — | .494 (12.55) | 1.083 (27.51) | .422 (10.72) | .030 (0.76) | .243 (6.17) | .048 (1.22) | .429 (10.90) | .345 (8.76) |
| DBMA-25P | 2.088 (53.03) | — | 1.534 (38.96) | 1.852 (47.04) | — | .329 (8.36) | .494 (12.55) | 1.625 (41.27) | .422 (10.72) | .039 (0.99) | .230 (5.84) | .060 (1.52) | .426 (10.82) | .345 (8.76) |
| DBMA-25S | 2.088 (53.03) | 1.511 (38.38) | — | 1.852 (47.04) | .311 (7.90) | — | .494 (12.55) | 1.625 (41.27) | .422 (10.72) | .030 (0.76) | .243 (6.17) | .048 (1.22) | .429 (10.90) | .345 (8.76) |
| DCMA-37P | 2.729 (69.31) | — | 2.182 (55.42) | 2.500 (63.50) | — | .329 (8.36) | .494 (12.55) | 2.272 (57.71) | .422 (10.72) | .039 (0.99) | .230 (5.84) | .060 (1.52) | .426 (10.82) | .345 (8.76) |
| DCMA-37S | 2.729 (69.31) | 2.159 (54.84) | — | 2.500 (63.50) | .311 (7.90) | — | .494 (12.55) | 2.272 (57.71) | .422 (10.72) | .030 (0.76) | .243 (6.17) | .048 (1.22) | .429 (10.90) | .345 (8.76) |
| DDMA-50P | 2.635 (66.92) | — | 2.079 (52.81) | 2.406 (61.11) | — | .441 (11.20) | .605 (15.37) | 2.178 (55.32) | .534 (13.56) | .039 (0.99) | .230 (5.84) | .060 (1.52) | .426 (10.82) | .345 (8.76) |
| DDMA-50S | 2.635 (66.92) | 2.064 (52.43) | — | 2.406 (61.11) | .423 (10.74) | — | .605 (15.37) | 2.178 (55.32) | .534 (13.56) | .030 (0.76) | .243 (6.17) | .048 (1.22) | .429 (10.90) | .345 (8.76) |

Mounting Option Dimensions — Crimp Components



It is recommended that only one assembly, either pin or socket, be float mounted.

Dimensions are shown in inches (millimeters).
 Dimensions subject to change.

ITT Cannon

For technical assistance, price or delivery information, call your local technical sales office or distributor.

High Rel Crimp Contacts

MATERIALS AND FINISHES

| Contact Size | Wire Size Accom. | Standard Finish | | Military Finish | | NMB | |
|--------------|------------------|-----------------|--------------|-----------------|---------------|--------------|--------------|
| | | Pin | Socket | Pin | Socket | Pin | Socket |
| 20 | 20, 22, 24 | 330-5291-000 | 031-1007-000 | 330-5291-037 | 031-1007-042 | 330-5291-037 | 031-1007-052 |
| 20 18 | 1 #18 & 2 #22 | 330-5291-001 | 031-1007-001 | 330-5291-055 | 031-1007-054 | | |
| 20 26 | 26, 28, 30 | 330-5291-004 | 031-1007-004 | 330-5291-050 | 031-1007-048 | | |
| 22D | 22, 24, 26, 28 | | | 030-2042-002* | 031-1147-002* | | |

MIL-C-39029 Cross-Reference

| Contact Size | Wire Size Accom. | M39029 | M24308 | Cannon Part No. |
|--------------|------------------|--------|--------|-----------------|
| 20 Pin | 20/22/24 | 64-369 | 11-1 | 330-5291-037 |
| 20 Socket | 20/22/24 | 63-368 | 10-1 | 031-1007-042 |
| 22D Pin | 24/26/28 | 58-360 | 13-1 | 030-2042-000 |
| 22D Socket | 22, 24/26-28 | 57-354 | 12-1 | 031-1147-000 |

*50 micronch AU over copper, no stripes

Assembly Instructions – Page 363

Tooling

Insertion/Extraction Tools



CIET-20HD

| Contact Size | AWG | Plastic Insertion/Extraction | | Plastic Extraction | |
|--------------|----------------|------------------------------|-------------|--------------------|-------------|
| | | Part No. | Description | Part No. | Description |
| 20 | 20, 22, 24 | 980-2000-426 | CIET-20HD | 323-7010-000 | CET-20-11 |
| 20 26 | 26, 28, 30 | 980-2000-426 | CIET 20HD | 323-7010-000 | CET-20-11 |
| 20 18 | 1 #18 | None | None | 274-5016-002 | CET-20-15 |
| | 2 #22 | None | None | 274-5016-002 | CET 20 15 |
| 22D | 22, 24, 26, 28 | 274-7048-000 | CIET-22D | None | None |
| High Power | 12, 16 | 274-7003-000 | CIET 12 | None | None |
| High Volt | #20 | 274-7003-000 | CIET 12 | None | None |

Hand Crimp Tools



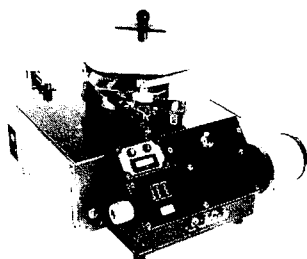
M22520/1-01



M22520/2-01

| Contact Size | AWG | Crimp Tool | | Locator | |
|--------------|----------------|--------------|-------------|--------------|-------------|
| | | Part No. | Description | Part No. | Description |
| 20 | 20, 22, 24 | 995-0001-584 | M22520-2-01 | 995-0001-604 | M22520/2-08 |
| | | 995-0001-585 | M22520-1-01 | 995-0001-244 | TH25 |
| 20 26 | 26, 28, 30 | 995-0001-584 | M22520-2-01 | 995-0001-325 | L3198-20HD |
| | | 995-0001-584 | M22520-2-01 | 980-0005-722 | K250 |
| 22D | 22, 24, 26, 28 | 995-0001-584 | M22520-2-01 | 995-0001-739 | M22520/2-06 |

Semi-Automatic Crimp Machines



CBT-646

The CBT-646, Vibra-Bowl Crimper is a pneumatically powered, electronically controlled machine. It is designed to semi-automatically crimp closed barrel, machined contacts, as used in the aerospace and commercial industries. The machine will accommodate wire sizes 30 thru 12 AWG. The CBT-646 is actuated automatically upon insertion of a pre-stripped stranded or single conductor wire. The CBT-646 meets all Mil. Spec. requirements for crimping closed barrel contacts.

Machine Crimp Rate: 1300 per hour

Power Requirements: Electrical 115 Vac, 60 Hz, 5A
Pneumatic 85 psi, 2 cu. ft. per min

Products: Most ITT Cannon Commercial and Aerospace closed barrel contacts, wire sizes 30 thru 12 AWG. (See connector line for part numbers.)

X-ON Electronics

Largest Supplier of Electrical and Electronic Components

Click to view similar products for [D-Sub Standard Connectors](#) category:

Click to view products by [ITT](#) manufacturer:

Other Similar products are found below :

[DCM37S732N](#) [DAM15P500](#) [DEV09S364GTLF](#) [DEM09P032N](#) [DDM50P732N](#) [DAM15S332N](#) [173109-2218](#) [173109-2466](#) [173109-2436](#)
[173109-2435](#) [56F706-005-LI](#) [56F711-015](#) [015-0341-000](#) [015-0372-008](#) [015-8544-011](#) [017041-0005](#) [020419-0104](#) [012-0515-000](#) [012-9507-](#)
[034](#) [012-9507-114](#) [012-9534-001](#) [020745-0008](#) [609-25P](#) [M24308/2-23Z](#) [M243082310F](#) [M243082410F](#) [M243082411F](#) [M24308/4-21](#)
[CT1A18-11PSA206](#) [CT1N36-5SC](#) [CT2-16S-17PS](#) [CT2-20-15PCAU](#) [CT2-24-12PS](#) [CT2-24-28PSF127A206](#) [CT2-32-9PC](#) [CT6F9767-14-4-](#)
[14S-5PC](#) [CT6FA10SL-4PS](#) [CT7-18-10SC](#) [CT7-18-10SCAU](#) [CT7-18-12SCAU](#) [CT7-18-1PC](#) [CT7-18-1PCAU](#) [CT7-18-21SCAU](#) [M83513/01-](#)
[FC](#) [M83723/76W24619 L/C](#) [M85049/48-3-2F](#) [69001-865](#) [6STD09PCM99B70X](#) [6STD09SCM99B30X](#) [6STD09SCT99S40X](#)