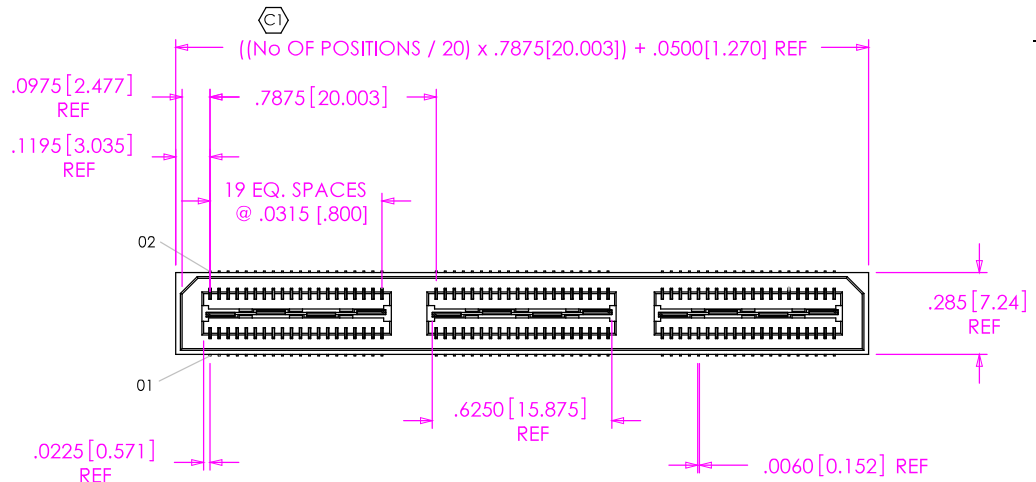


QSE-XXX-01-X-D-XXX

DO NOT SCALE FROM THIS PRINT



No OF POSITIONS
-020, -040, -060
-080, -100 (PER ROW)

LEAD STYLE
-01 .1280[3.251]

PLATING SPECIFICATION
-F: FLASH SELECTIVE GOLD (USE C-126-XX-F, T-1G2-XX-F) (SEE NOTE 8)
-L: LIGHT SELECTIVE GOLD (USE C-126-XX-L, T-1G2-XX-G)
-H: HEAVY GOLD (USE C-126-XX-H, T-1G2-XX-G)

ROW SPECIFICATION
-D: DOUBLE (USE QSE-20-XX-D-XX)

No OF BANKS

OPTION
-A: ALIGNMENT PINS (USE QSE-20-XX-D-XX-A) NA WITH -LC OPTION
-LC: LOCKING CLIPS (USE LC-08-TM-01) NA WITH -A OPTION
-GP: GUIDE POSTS (SEE FIG. 3) (USE QSE-20-01-D-XX-X-GP) (T & R PACKAGING: 40 POS. MAX.)
-K: POLYAMIDE FILM (USE K-850-650, SEE FIG. 2)
-TR: TAPE & REEL (60 POS. MAX) (40 POS MAX -GP OPTION)
-FL: FRICTION LOCKS (SEE FIG. 4, SHEET 2) (NOT AVAILABLE WITH -GP)
-RT1: RETENTION OPTION (MUST USE -A OPTION) (USE QSE-20-01-D-XX-A-RT1 & SUB-SC-05-01-FF) (SEE FIG. 5, SHEET 2) (NOT AVAILABLE WITH -LC, -GP, OR -FL) (NOT AVAILABLE WITH -080 & -100 POS)

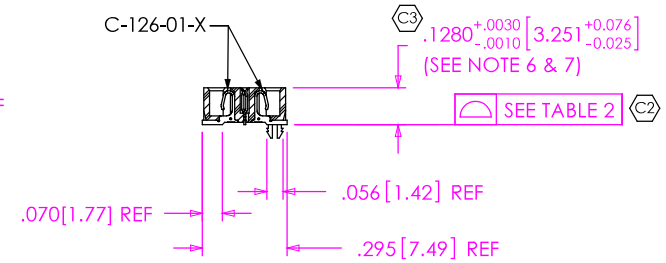
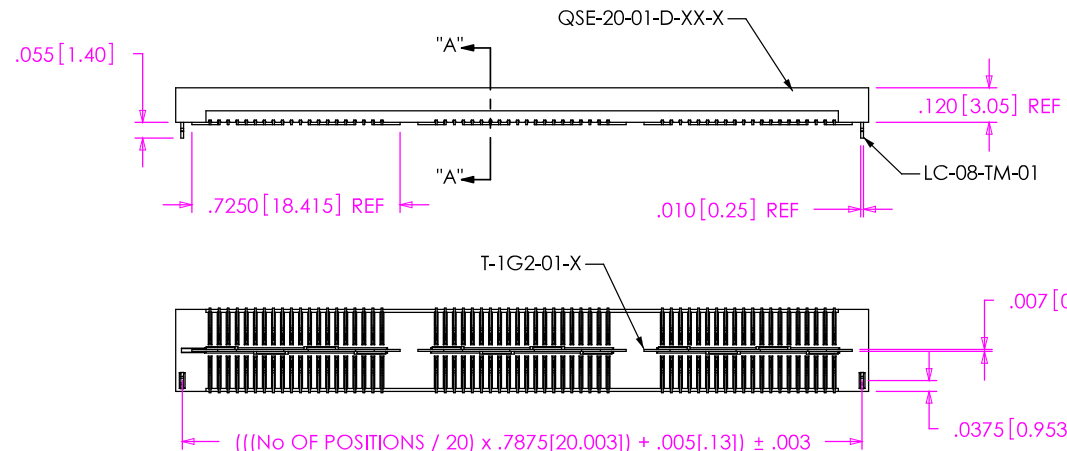


FIG. 1
QSE-060-01-X-D-LC SHOWN

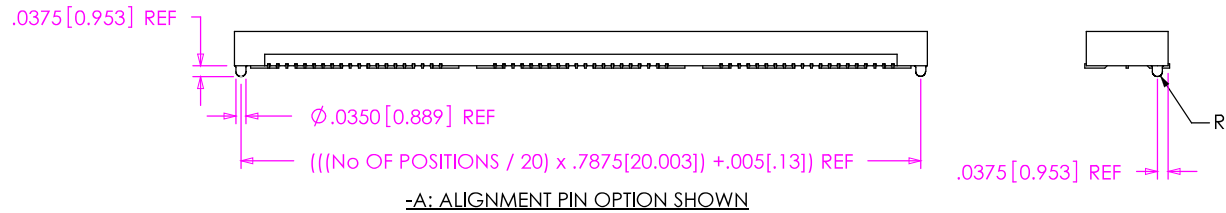


TABLE 1	
No OF POS	COPLANARITY INCLUDING GP
-020 THRU -040	.0040[.102]
-060 THRU -100	.0060[.152]

- NOTES:
- CONTACT RETENTION: 8 OZ MIN.
 - GROUND PLANE RETENTION: 8 OZ MIN.
 - Ⓢ REPRESENTS A CRITICAL DIMENSION.
 - PARTS ARE MOLDED TO POSITION.
 - DELETED.
 - MAX VARIANCE OF .002[.51].
 - DIMENSION APPLIES TO CONTACTS & GROUND PLANE.
 - L PLATING CAN BE SUBSTITUTED FOR -F PLATING; -G PLATED GROUND PLANE CAN BE SUBSTITUTED FOR -F PLATED GROUND PLANE.
 - GROUND PLANE PRESS HEIGHT MUST BE .003 [.08] LESS THAN THE MAX HEIGHT OR .001 [.03] GREATER THAN THE MINIMUM HEIGHT OF THE SOCKETS.
 - S-103 RETENTION: 1 LB MIN IN BODY.

UNLESS OTHERWISE SPECIFIED, DIMENSIONS ARE IN INCHES. TOLERANCES ARE:
 DECIMALS ANGLES
 .XX: ±.01[.3] 2°
 .XXX: ±.005[.13]
 .XXXX: ±.0020[.051]

PROPRIETARY NOTE
 THIS DOCUMENT CONTAINS INFORMATION CONFIDENTIAL AND PROPRIETARY TO SAMTEC, INC. AND SHALL NOT BE REPRODUCED OR TRANSFERRED TO OTHER DOCUMENTS OR DISCLOSED TO OTHERS OR USED FOR ANY PURPOSE OTHER THAN THAT WHICH IT WAS OBTAINED WITHOUT THE EXPRESSED WRITTEN CONSENT OF SAMTEC, INC.



520 PARK EAST BLVD, NEW ALBANY, IN 47150
 PHONE: 812-944-6733 FAX: 812-948-5047
 e-Mail: info@SAMTEC.com code: 55322

MATERIAL: DO NOT SCALE DRAWING
 INSULATOR: BLACK LCP
 CONTACT: PHOS BRONZE
 GROUND PLANE: PHOS BRONZE

SHEET SCALE: 1:0.6666666666666666 DESCRIPTION:

.8mm DOUBLE ROW HS SOCKET ASSEMBLY
 DWG. NO. QSE-XXX-01-X-D-XXX
 BY: ERIC M 05/20/1999 SHEET 1 OF 2

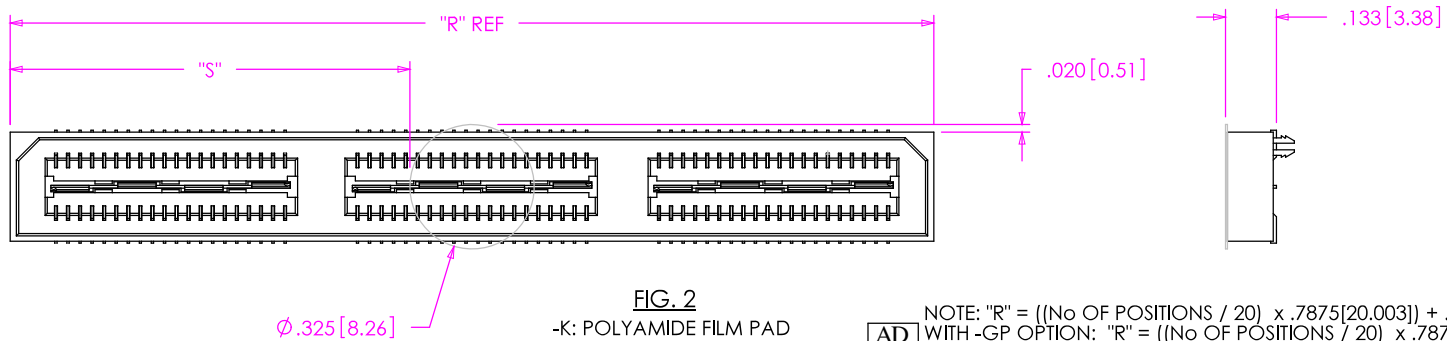


FIG. 2
-K: POLYAMIDE FILM PAD
[USE K-850-650]

AD

NOTE: "R" = ((No OF POSITIONS / 20) x .7875[20.003]) + .050[1.27]
WITH -GP OPTION: "R" = ((No OF POSITIONS / 20) x .7875[20.003]) + .429[10.90] REF
"S" = (("R" - .325[8.26]) / 2) ±.020[.51]

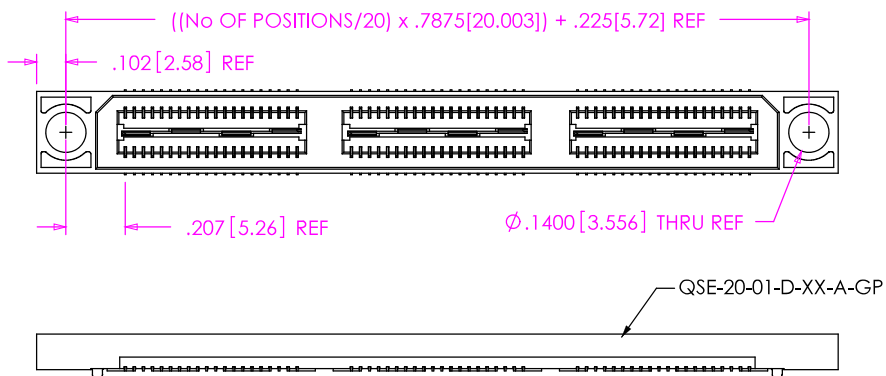


FIG. 3
-GP OPTION
[SAME AS FIG. 1, UNLESS OTHERWISE STATED]
[AVAILABLE ON LEAD STYLE -01 & -01-A ONLY]
(40 POS. MAX WITH T & R PACKAGING)

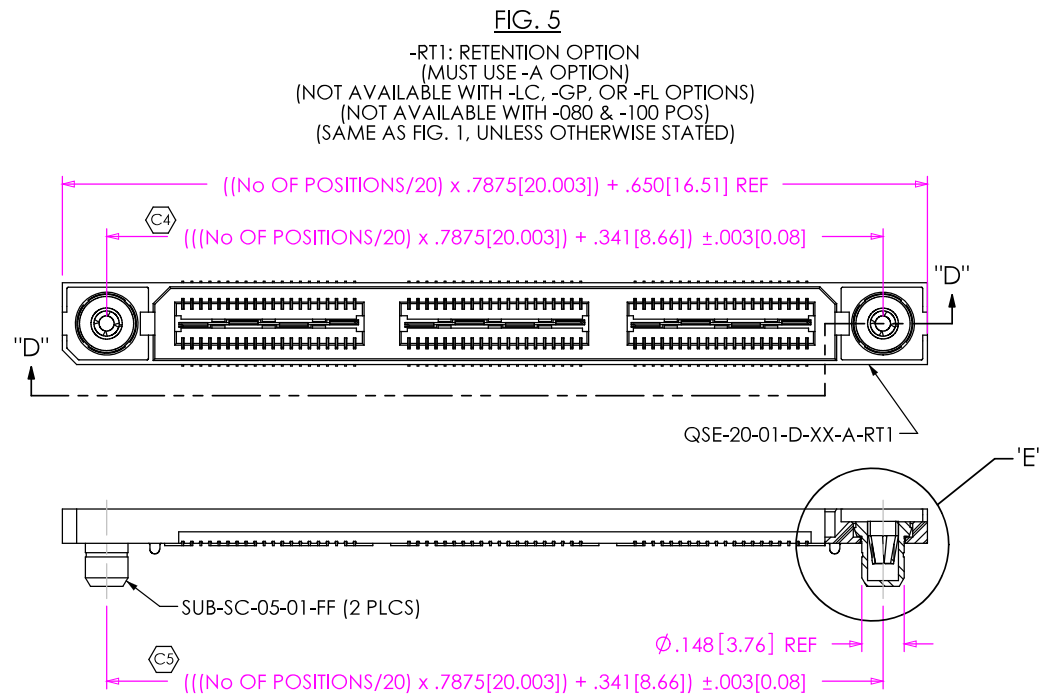


FIG. 5
-RT1: RETENTION OPTION
(MUST USE -A OPTION)
(NOT AVAILABLE WITH -LC, -GP, OR -FL OPTIONS)
(NOT AVAILABLE WITH -080 & -100 POS)
(SAME AS FIG. 1, UNLESS OTHERWISE STATED)

SECTION "D"- "D"
SCALE 1.5 : 1

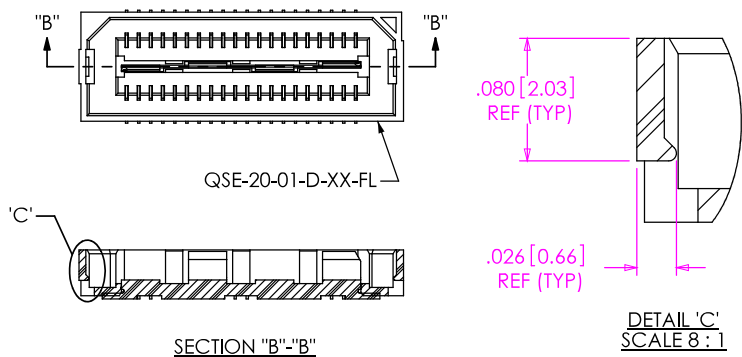
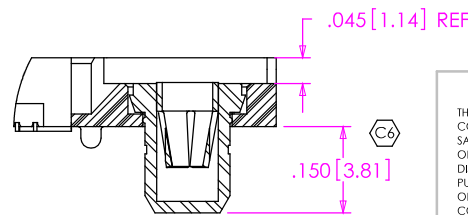


FIG. 4
-FL: FRICTION LOCKS
(NOT AVAILABLE WITH -GP OPTION)
(SAME AS FIG. 1, UNLESS OTHERWISE STATED)



DETAIL 'E'
SCALE 3 : 1

F:\DWG\MISC\MKTG\QSE-XXX-01-X-D-XXX-MKT.SLDDRW

PROPRIETARY NOTE
THIS DOCUMENT CONTAINS INFORMATION
CONFIDENTIAL AND PROPRIETARY TO
SAMTEC, INC. AND SHALL NOT BE REPRODUCED
OR TRANSFERRED TO OTHER DOCUMENTS OR
DISCLOSED TO OTHERS OR USED FOR ANY
PURPOSE OTHER THAN THAT WHICH IT WAS
OBTAINED WITHOUT THE EXPRESSED WRITTEN
CONSENT OF SAMTEC, INC.

DO NOT SCALE DRAWING

SHEET SCALE: 2:1

samtec

520 PARK EAST BLVD, NEW ALBANY, IN 47150
PHONE: 812-944-6733 FAX: 812-948-5047
e-Mail: info@SAMTEC.com code: 55322

DESCRIPTION:
.8mm DOUBLE ROW HS SOCKET ASSEMBLY

DWG. NO.
QSE-XXX-01-X-D-XXX

BY: ERIC M 05/20/1999 SHEET 2 OF 2

X-ON Electronics

Largest Supplier of Electrical and Electronic Components

Click to view similar products for [Board to Board & Mezzanine Connectors](#) category:

Click to view products by [Samtec](#) manufacturer:

Other Similar products are found below :

[10135583-642402LF](#) [89885-310LF](#) [589158040000018](#) [6-1393048-0](#) [68683-613](#) [MDF7-12DP-2.54DSA](#) [MDF7-18P-2.54DSA\(01\)](#) [MDF7-20DP-2.54DSA](#) [MDF7-26D-2.54DSA\(55\)](#) [MDF7-3P-2.54DSA\(01\)](#) [MDF7B-3P-2.54DSA\(55\)](#) [MDF7C-11P-2.54DSA\(55\)](#) [MDF7C-18P-2.54DSA\(55\)](#) [MDF7C-5P-2.54DSA\(01\)](#) [MDF7P-5P-2.54DSA\(55\)](#) [75234-0516](#) [FCN-230C068-11](#) [FCN-268F012-G/BD](#) [FCN-268F036-G/BD](#) [FCN-268M012-G/0D](#) [FCN-268M024-G/1D](#) [FCN-360C008-C](#) [FCN-360C040-C](#) [FCN-723J004/1](#) [MIS-048-01-F-D-DP-K](#) [832-10-034-10-001000](#) [93696-325LF](#) [11828-1FA](#) [AXK630345P](#) [18097-0013](#) [ICA-328STT](#) [2007042-2](#) [304400-2](#) [FCN-214Q030-G/0](#) [FCN-215Q040-G/0](#) [FCN-230C068-ESA](#) [FCN-234P048-G/0](#) [FCN-235D050-G/C](#) [FCN-360A3](#) [FCN-360C040-B](#) [210-93-314-41-105000](#) [2-22603-0](#) [379-064-521-202](#) [MDF7-12P-2.54DSA\(01\)](#) [MDF7-16P-2.54DS\(56\)](#) [MDF7-40DP-2.54DSA\(55\)](#) [MDF7-8P-2.54DSA\(55\)](#) [MDF7B-16P-2.54DSA\(55\)](#) [AXG720047](#) [5031084030](#)